

Club Meetings

Tuesday, March 5

LPS Board Meeting

Open to All

Perkins Restaurant

[2222 West Eisenhower](#)

Loveland, CO

5:30 PM Optional Dinner

6:30 PM Meeting

Saturday, March 9

Photo Bull Session

Daz Bog Coffee Shop

[556 Lincoln](#)

Loveland, CO

8:30–10 :30 AM

Monday, March 11

Monthly Club Meeting

Group Publishing

[1515 Cascade Avenue](#)

Loveland, Colorado

Social Hour

Cash Snack Bar

5:30-6:30 PM

Club Meeting

6:30-9:30 PM

Monday, March 18

Photo Review Session

Loveland Library

Gertrude Scott Room

[300 Adams Avenue](#)

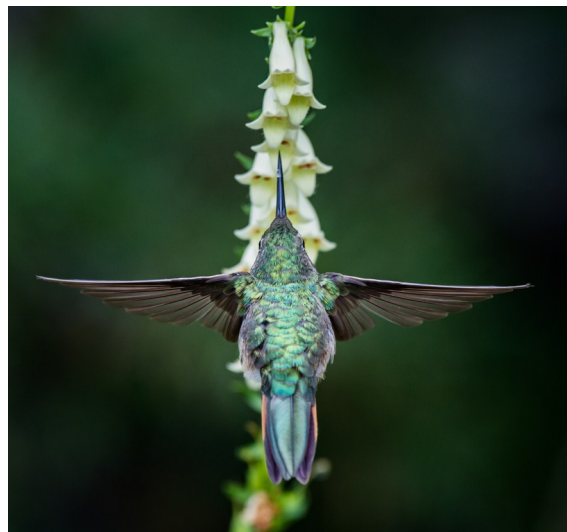
Loveland, CO

6:00-8:00 PM

March Meeting Agenda

A Personal Journey Towards Photo-advocacy

Presented by Scott Wilson



BY JEANIE SUMRALL-AJERO

PROGRAMS@LPS.CC

Award-winning landscape photographer, Scott Wilson, shares his self-taught love affair with photography, starting in the UK with his local camera club and tackling multiple genres

Continued on Next Page

LPS Board of Directors

[PRESIDENT](#)

— KURT FLOCK

[VICE PRESIDENT](#)

— KEVIN FETTIG

[TREASURER](#)

— SANDY LOUCKS

[SECRETARY](#)

— SCOTT SPRAIN

[PAST PRESIDENT](#)

— TONY PARISO

[PROGRAMS](#)

— JEANIE SUMRALL-AJERO

[MEMBERSHIP](#)

— SANDY LOUCKS

[COMPETITION](#)

— LORIE SMITH

LPS Officers

[FIELD TRIPS](#)

— LYNNE LEWIS

[GREETING HOSTS](#)

— JAMIE CARRIER

& INGRID JACOBSON

[MENTOR](#)

— MIKE WILCOX

[PROJECTIONIST](#)

OCTAVIO NODA

& MIKE WILCOX

[FORUM DIRECTOR](#)

— INGRID JACOBSON

[PUBLICITY](#)

— OPEN

[SCHOLARSHIPS](#)

— RUTH SPRAIN

[NEWSLETTER/WEBMASTER](#)

— BILL SHANAHAN

[PSA REPRESENTATIVE](#)

— LISA SCHNELZER

[FACILITY SETUP](#)

— JEANIE SUMRALL-AJERO

InFocus

The e-Newsletter for the
Loveland Photographic Society

Newsletter Deadline

In order to publish the newsletter by the first of the month, please [email](#) your articles by the 28th of the previous month. Any plain text file, email body text, or a Microsoft Word compatible document will do, with pictures embedded or attached separately. Please don't convert text files to PDF format.

Field Trip Registration

To register for a field trip, logon to the website, go to the calendar and click on the event. Click on **Registration Information** (lower left-hand corner) to sign up.

Submitting Pictures for the Monthly Competition or Photo Review Session

- Log on to the LPS.CC website
- Mouse over the Competitions dropdown on the Home Page.
- Select menu item:
Submit images to a Competition
- Select the Competition or the Third Monday Photo Review
- Click the **Select** button on the Left side.
- At the bottom of the screen, click on **Upload images into the Competition.**
- Then click on the button **Select** which will open a window on your computer to select images.
- Click on **Save Images**
The monthly competitions allow a single image per competition.

The photo review session allows up to three images — title the images with the letters A, B and C followed by your last name. This will allow us to limit the number of images if it is necessary.

SIG Meetings

Mac Users Group

Thursday, March 21

Poole's Residence in Seven Lakes

Patio Homes and Cottages

[2915 Purgatory Creek Dr.](#)

Loveland, CO

6:30 PM

970-481-2175 for more information



The LPS Affiliate Program

The following companies have offered LPS various programs for the club and anyone who uses the special links provided on the website to make purchases. Make sure to use the links **each time you order**. Otherwise, you and LPS will not receive the benefits of the program each company offers.

- ◆ Amazon.com
- ◆ Adorama
- ◆ Feisol
- ◆ MindShift Gear
- ◆ Red River Paper
- ◆ Think Tank Photo
- ◆ Topaz Labs

Click on **Affiliate Program** on the LPS.CC website home page.

Social Hour

Group Catering will offer soft drinks, coffee, tea, smoothies, and light snacks prior to our regular monthly meetings as long as enough members participate.

Scott Wilson

— Continued from Previous Page —

before making his dream move to Colorado, in 2015. A year later, that dream turned nightmare with a stage 4 cancer diagnosis that threatened his life and his landscape photography pursuits, due to chemo-induced photosensitivity. So, Scott shot wildlife from the protective shade of his car and turned his new portfolio into a book — *Through the Window* — and a platform for cancer advocacy. Scott donates all of his book and print proceeds to support colon cancer research and wildlife charities.

A multi-year finalist in the UK Landscape Photographer of the Year, Scott was resident artist at the Denver Photo Art Gallery in 2017 and named Denver Instagrammer of the Year by Westword magazine. His work has featured in a wide range of media including Advanced Photographer, 5280 magazine, Denver Life, 303 Magazine, Denver 9News, CBS News, Fox Denver, the Photographer's Guide to Scotland and the UK Daily Mail.

New Members

Welcome to our new members who have joined the Loveland Photographic Society since that last newsletter was published.

James Hein
Warren Larson
Steve Eustace



MEMBER
ORGANIZATION

Snapshot vs. Composition

BY OCTAVIO NODA
PROJECTIONIST@LPS.CC

In photography the term snapshot is a general name for pictures taken on impulse of a view that grabs our attention but without any creative purpose. Quite often snapshots are poorly composed, sometimes out-of-focus and/or without a definite point of interest. These types of pictures are dull to say the least and only of interest to the person who took the picture.

Pictures are taken to be seen, to enjoy the moment, and to remember the occasion or the scene. More often than not snapshots fail to accomplish their purpose.

Successful snapshots are those that convey a view that is pleasant to see many times, either of a family gathering or a scenic view.

Knowing a few rules of composition will help tremendously to create worthwhile pictures to be admired. There are no fixed rules in photography, but there are guidelines which can help you to enhance the impact of your photos.

There are few basic composition guidelines that are important to remember.

- 1 – Simplicity. Concentrate on your subject and avoid distracting elements
- 2 – Use the Rule of Thirds to compose the photo.
- 3 – Look for balance and leading lines in your photos
- 4 – Get familiar with your camera.



Competition Corner

BY LORIE SMITH

COMPETITION@LPS.CC

Please congratulate the following members who have advanced to the next level of competition.

Masters

Jim Paterson

March Theme

It's a Small World

Submission Deadline

Before Midnight, Monday, March 4, 2019

Please keep the judging criteria in mind:

Impact and Viewer Interest — "Wow" factor is the nebulous quality where an image "pops". This subjective aspect of judging should not preempt the technical or composition aspects of an image.

Composition — Good composition is a pleasing arrangement of the elements in an image. There are many guidelines for good composition that judges may consider.

Technical Quality — This includes sharpness, focus, color, tonal scale, contrast, appropriate depth of field and other qualities. Consideration is also given for the effect the photographer was trying to achieve such as high key, multiple exposure, selective focus, etc.

Monthly Themes — The subject matter should be related in some manner to the theme. While there are no formal "deductions" or penalties, judges may reduce their overall score if they feel the image does not align with monthly theme. With that said, creative interpretation is encouraged.

Future Monthly Themes For 2019

April — In Motion

May — In the Dark

June — Reflections

July — It's a Colorado Thing

August — Celebrate Color!

September — How We Get There

October — This Ordinary Life

November — Joy!

December — TBD

LPS Board Meetings Open to All Members

The board meetings that are held every other month at a local restaurant are open to everybody. If you are interested in seeing how your leadership team tends to club business, you are encouraged to attend.

The meeting for January will be held at Perkins Restaurant, 2222 West Eisenhower, Tuesday, March 5. The meeting is started with an optional dinner at 5:30 p.m., then continues on to club business at 6:30 p.m.

Loveland Photographic Society on Facebook

BY KRISTI NORMAN

If you are an active member of Loveland Photographic Society and on Facebook, request to join our Loveland Photographic Society closed Facebook page. This page is for LPS members only, and you will need to click on the "request to join" button, and be approved by a page admin before you can view the content.

This social media platform is great to share images, photography related articles and local image capture opportunities.

Search "Loveland Photographic Society" when in Facebook or [click here](#).

Interesting Search

BY JERRY NEFF

Google dicitis.com (but don't try to go directly to dicitis.com) for links to some interesting photography sites, such as:

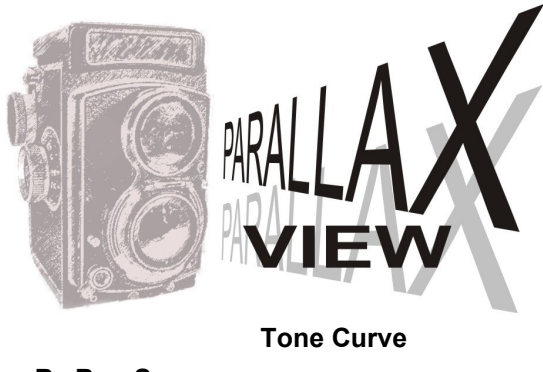
5 Tips and Tricks from Professionals to Help You Do Better Wildlife Photography

The Beginner's Guide to Choosing a Photography Style

A Beginner's Guide to Using a Tripod for Landscape Photography

Join the Club!

If you are reading the newsletter as a non-member and would like to join the Loveland Photographic Society, go to the main page on the LPS.CC website and click on **Membership > Join or Renew**.



BY BILL SHANAHAN
NEWSLETTER@LPS.CC

The tone curve has different faces depending on which Adobe product you are using. To me, the most useful one is in the Photoshop adjustment layers. It not only has a curve that you can adjust, but contains a few tools along the left side:

- On-image adjustment tool
- Sample in-image to set black point
- Sample in-image to set gray point
- Sample in-image to set white point
- Edit points to modify the curve
- Draw to modify the curve

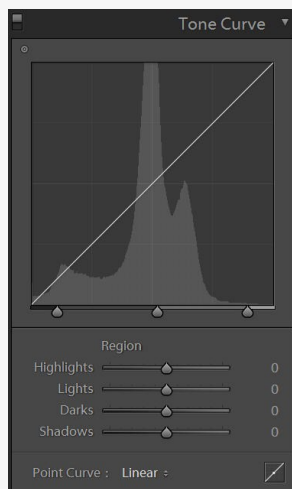
The on-image adjustment tool is the one that has piqued my interest. With it, you can click on any part of the image and move your mouse up or down to adjust the tonal area, or move left or right to adjust contrast. It's a lot easier than picking a point along the curve to make an adjustment.

To access this panel, click the curves icon in the Adjustments panel or choose Layer > New Adjustment Layer > Curves. Click OK in the New Layer dialog box.

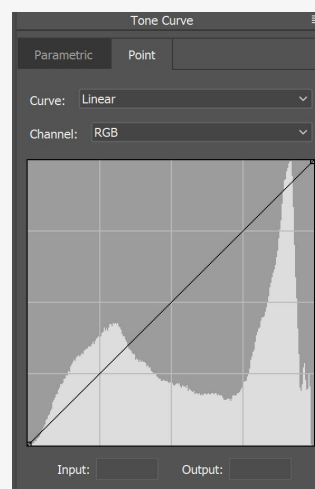
Other options with this version of the tone curve include:

- Set black point
- Set gray point
- Set white point
- Show clipping

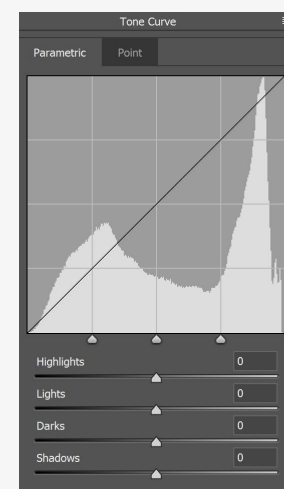
Reference: helpx.adobe.com/photoshop/using/curves-adjustment.html



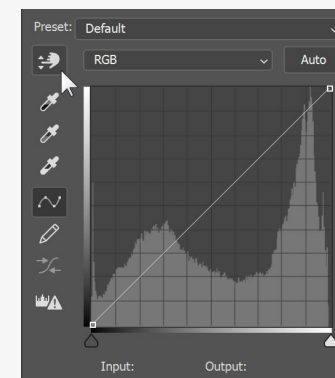
Lightroom Tone Curve Panel



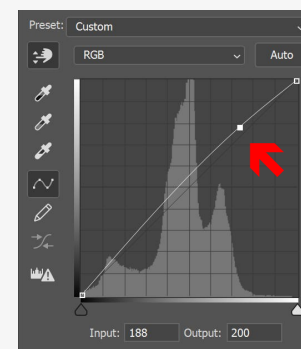
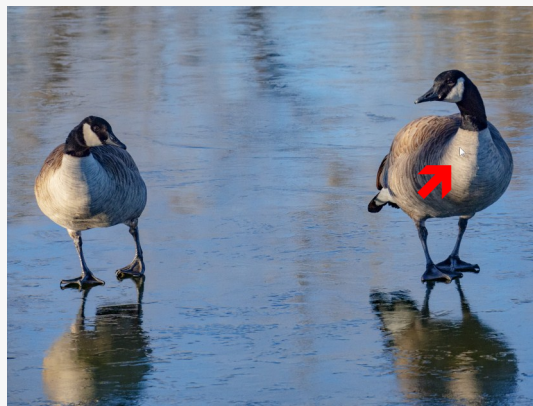
Photoshop Camera Raw Point Tone Curve



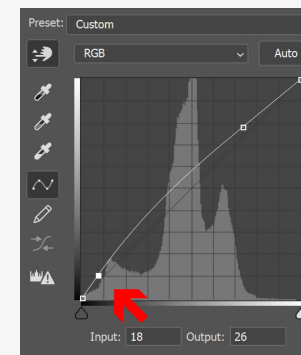
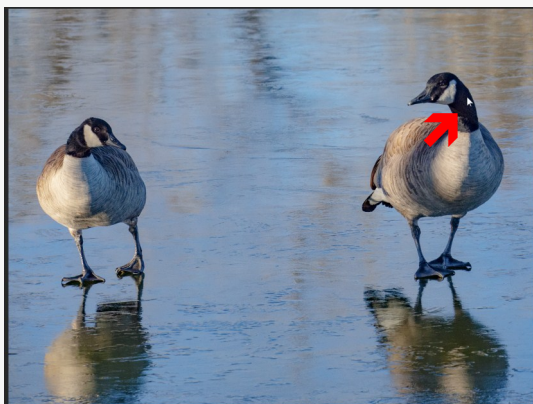
Photoshop Camera Raw Parametric Tone Curve



Photoshop Adjustment Layer Tone Curve Panel — pointing to the on-image adjustment tool.



Photoshop Adjustment Layer Tone Curve Panel — corresponding to the highlight selected in the photo.



Photoshop Adjustment Layer Tone Curve Panel — corresponding to the dark area selected in the photo.