

LPS InFocus

Loveland Photographic Society
Monthly Newsletter

July 2023



Club Meetings

Club meetings are hybrid in-person plus Zoom; the Photo Review Session is online only.

Tuesday, June 27

LPS Board Meeting

Perkins Restaurant
2222 W. Eisenhower, Loveland
6:30 PM
Open to All

Saturday, July 8

Photo Bull Session

Loveland Panera Bread
1550 Fall River Drive, Loveland
8:30–10:30 AM

Monday, July 10

Monthly Club Meeting

Trinity United Methodist Church
801 Cleveland Avenue
Social time 6:00 PM
Meeting 6:30–8:30 PM
<https://zoom.us/j/93226580276>
Pass Code: 049611

Monday, July 17

Photo Review Session

6:30–8:30 PM
<https://zoom.us/j/95087721084>
Pass Code: 961019

Please mute your microphone during online meetings except when you are speaking, to avoid background noises.

Ingredients for an Award-Winning Image

Presentation by J.R. Schnelzer

The speaker at the July meeting will be J.R. Schnelzer, who will be making his presentation in person. J.R. is an active semi-professional photographer working in the areas of fine art, nature, stock, and commercial photography. J.R. has over 40 years of photographic experience. He began his passion for photography working in his father's darkroom, later attending Ohio State University working on an MFA in photography. During his studies, he was fortunate enough to spend time with Minor White, Ansel Adams, John Sexton, and Kim Weston, just to name a few.



J.R. is responsible for the formation of the Center for Fine Art Photography in Colorado. He is past president of the Loveland Photographic Society and has become heavily involved with the Photographic Society of America, currently serving as the president. He was named first in the world in both color and monochrome small prints in the 2019 Who's Who for PSA and holds earned designations of FPSA, MPSA2, and EFIAP. He also has been awarded a Blue Pin from FIAP (Fédération Internationale de l'Art Photographique).

He has done work for Mannheim Steamroller and has been represented in many magazines and books. In 2014 he was invited to exhibit in the Master of Photography Exhibition in Hong Kong and also the Photo La Gacilly Exhibition in France. He has also been invited to exhibit in China and Morocco.

"Photography is the process of creating future memories. My work is my language: I view the world in terms of their form and beautiful light. The hope of my art is to hold for you, in the subsiding of life's rush, the beauty of visual moments."

J.R. has judged photographic competitions locally, regionally, and internationally. He will be sharing award-winning images from international photographers and lead an interactive discussion about the images, what makes them winning images, and what might be flaws that make them weaker in competitions.

LPS Board of Directors ELECTED OFFICERS

PRESIDENT

— ARDETH CARLSON

VICE PRESIDENT

— RICH KREBS

TREASURER/MEMBERSHIP

— TIM HITCHCOCK

SECRETARY

JERRE JOHNSON

CHAIRPERSONS

IMMEDIATE PAST PRESIDENT

— DAN KOZLOWSKI

PROGRAMS

— TIM KATHKA

— RICH KREBS

— RUTH SPRAIN

COMPETITION

— JEFF STEPHENSON

WEBMASTER

— MIKE TESKA

MENTOR

— MIKE WILCOX

PSA REPRESENTATIVE

LISA SCHNELZER

SCHOLARSHIPS

— RUTH SPRAIN

NEWSLETTER

— ARDETH CARLSON

FORUM DIRECTOR

— INGRID JACOBSON

GREETING HOST

— JERRE JOHNSON

LPS InFocus

The e-Newsletter for the
Loveland Photographic Society

Mailing Address

P. O. Box 7604 • Loveland, CO 80537

Public Facebook Page

[https://www.facebook.com/
LovelandPhotographicSociety/](https://www.facebook.com/LovelandPhotographicSociety/)

Members Only Facebook Group

[https://www.facebook.com/
groups/237033251716/](https://www.facebook.com/groups/237033251716/)

Submitting Pictures for the Monthly Competition or Photo Review Session

- Log on to the LPS website
- Mouse over the **Competitions** dropdown on the Home Page.
- Select menu item:
Submit images to a Competition
- Select the Competition category or the Third Monday Photo Review
- At the bottom of the screen, click on **Upload images into the Competition.**
- Then click on the button **Select** which will open a window on your computer to select an image.
- Click on **Save Images and Proceed to Edit Page.**
- Type in a title and click on **Save any changes and return to original page.**
- You can replace any photo, up to the submission deadline, if desired.

The monthly competitions allow a single image per category. The photo review session allows up to three images.

Larimer County Fair 2023 Volunteers Still Needed

The county fair is coming up soon, and volunteers are still needed from LPS to work in the Open Class Photography competition. Additional help is especially important for Wednesday afternoon, August 2. The submitted images will be judged by our six judges in the morning, and then the photos need to be hung on the display racks in the afternoon. We are looking for 6 to 12 people who are willing to give their time for this task. We plan to meet at Rock Bottom Brewery afterward to celebrate!

It is important for Ardeth Carlson, who is serving as the Open Class Photography superintendent, to have volunteers lined up in advance, so if you are willing and able to help, please do not wait until the very last minute! You can sign up at the July meeting or contact Ardeth directly at ardeth.carlson@gmail.com or call or text her at 970-290-9550.

All volunteers are invited to a free taco-bar lunch at the fairgrounds at noon on August 2, but the fair coordinator needs a participant count, so let Ardeth know if you would like to eat lunch there.

On Wednesday morning during the judging, it would also be helpful to have three people who can write down short comments from the judges on the entry tags.

The following Wednesday evening, August 9, exhibitors will be returning to pick up their photos, which will require one or two more people in addition to the superintendent.

Members can also volunteer to staff the LPS table during the fair. The table will have our brochures and a poster, and the volunteers can simply be available to answer any questions about the club. Afternoons or evenings would be most beneficial. This is an excellent way to promote LPS.

County Fair Competition

Although the superintendent and the judges will not be able to compete in the Open Class Photography competition, the competition is open to all other LPS members.

Instructions on how to enter your images in open class competition can be found here: [https://www.treventscomplex.com/assets/
doc/2023-Photography-Fairbook-
c42af96ab9.pdf](https://www.treventscomplex.com/assets/doc/2023-Photography-Fairbook-c42af96ab9.pdf)

The exhibitor names will not be seen by the judges, but members who intend to enter images in the fair competition are encouraged to not enter the same images in LPS competitions or on Facebook prior to the fair to avoid having the judges be able to recognize the work of fellow LPS members.

PSA Pictorial Print Annual Exhibition

If you are a member of Photographic Society of America, there is still time to enter the 2023 annual pictorial print exhibition. Accepted and awarded images and prints are on display at the PSA Photo Festival each year. There are sections for both digital entries and print entries, but the closing date is July 8, so prints would need to be sent soon to get them in before that date.

The digital sections are color, color altered reality, monochrome, and monochrome portrait. Print sections are small color, small color red, small monochrome, small monochrome written word, large color, large color landscapes, monochrome, and monochrome architecture. When the digital "thumbnail" of the prints are submitted, labels will be sent via PDF to be placed on the back of the photograph. For more complete information:

<https://psa-photo.org/page/psa-annual>

SERVICE

Find Your Way to Serve

Our membership is growing, and we now have a member who has volunteered to serve as treasurer for our 2024 year, which is an elective office which will be voted on in November, but we would like to fill several other important roles for LPS activities.

In order for us to continue having club photo competitions, we need someone who will assume the responsibilities of competition chair, beginning in January. We would also like to have a member take over as greeting host, welcoming attendees at our monthly meetings and maintaining the member name tags; Jerre would be happy to turn this over at any time.

Before the Covid years, LPS only had in-person meetings, and we had a designated projectionist for the competition slideshow and guest speakers' PowerPoint presentations. Now that we are holding hybrid in-person and online Zoom meetings, it would be very helpful to set up a Technology Committee to provide expertise in handling the church's projector and speaker system and setting up the Zoom meetings and could plan for any needs such as using a video camera in addition to the laptop camera.

These are not elective positions, so if anyone is willing to serve in any of these capacities or is interested in knowing more about what would be involved, please contact a member of the leadership team listed on page 1 of the newsletter.

Online Attendance

One thing that has become obvious with regard to the use of Zoom meetings for members who are unable to attend meetings in person is that those online attendees probably will not be able to have the same experience as those who are in the meeting room.

Our previous meeting room featured an in-room video camera that followed the person speaking (usually but not always!), while in our new location, Zoom attendees will only see the person speaking, such as the president or competition chair, if that person stands directly in front of the laptop that's placed on the podium, which is not always convenient. Thus, sometimes those of you at home might only be looking at the curtain on the stage or the top of someone's head.

During the social time from 6 to 6:30, there is a lot of room noise of people visiting, and the president, competition chair, and program committee members are often working out the Zoom settings and connecting with the Zoom presenter, so there really is not an opportunity for online attendees to participate in the socializing aspect.

When Ruth Sprain is at the meeting, she logs in to the Zoom meeting and monitors the chats, and she tries to alert the leaders running the meeting if there are issues with the video or the sound so corrections can be made, if possible, but we might not always be able to fix the quality of the sound.

There is always an option for LPS to discontinue offering the online meetings and going back to in-person-only gatherings, but we understand that the addition of the Zoom meetings is helpful to some of our members who no longer live in the Loveland area and for other reasons that make it difficult to attend in person. We just ask that you be patient with the limitations of technology to replicate the experience of gathering together at the meeting facility.

Competition Chair Duties

Many members really enjoy participating in the competitions and feel it does help us approach our own photography more critically with a view to improving. The competition chair is responsible for organizing the monthly competitions, including scheduling the competition judges for the year, selecting topics for each month, and updating the competition groups. This person also presents the slideshow at the monthly meetings. The job can also entail coordinating training for new judges when requested, with the assistance of other LPS members.

It could be a good opportunity for several members to work together as co-chairs to take care of all these responsibilities. For more detailed information on what is involved, the current competition chair, Jeff Stephenson, would be glad to discuss it with you at one of the meetings, or contact him at jtstephenson67@gmail.com. This office is not an elected position, but the incoming competition chair would need to begin a term of office in January.

2023 LPS Competition Categories

August

Travel

Topic: Macro

September

Monochrome

Topic: Historical

October

Nature—Wildlife

Topic: Night Sky

November

Travel

Monthly Topic: Transportation

Competition Corner

July Competition

Open Projected (included every month)
Nature

Topic: Gardens/Flowers

Submission Deadline

Before Midnight, Monday, July 3

Please keep the judging criteria in mind:

Impact and Viewer Interest—"Wow" factor is the nebulous quality where an image "pops." This subjective aspect of judging should not preempt the technical or composition aspects of an image.

Composition—Good composition is a pleasing arrangement of the elements in an image. There are many guidelines for good composition that judges may consider.

Technical Quality—This includes sharpness, focus, color, tonal scale, contrast, appropriate depth of field and other qualities. Consideration is also given for the effect the photographer was trying to achieve such as high key, multiple exposure, or selective focus.

Monthly Topics—The subject matter should be related in some manner to the topic. While there are no formal deductions or penalties, judges may reduce their overall score if they feel the image does not align with the monthly topic. With that said, creative interpretation is encouraged.

Open Projected—The image must begin as a photograph. From there, it is up to you. Any photograph may be entered in the Open Projected category.

July Competition Groups

Participation in a group is determined by the average of the member's 9 previous LPS competition scores. The groups for the July competition:

Group 5—Gerald Baumann, Kevin Burkhardt, Darryl Hodson, Robert Huffsmith, Ed Ogle, J.R. Schnelzer, Lisa Schnelzer, Bob Smith, Ruth Sprain, Jeff Stephenson, Mike Wilcox

Group 4—Ardeth Carlson, Max Coopwood, Kurt Flock, Jerre Johnson, Tim Kathka, Dan Kozlowski, Octavio Noda, Dan O'Donnell, Laurie Paulik, Mike Teska, Dave Van Riper

Group 3—Jenny Anderson, Kevin Fettig, Marvin Froistad, Tim Hitchcock, Rich Krebs, Bob McDonnell, Amanda Murphy, Josemaria Quera, Michael Rothschild, E. Wayne Snodderly

Group 2—None at this time

All other members will compete in group 1 until the member has 9 submitted images that reach an averaged score for a different group. An individual member's competition group might vary from month to month.

Be sure to read before submitting your photo



Nature Category

Please be aware of these rules for Nature competition images.

Allowed digital adjustments:

- Adjust exposure, contrast
- Adjust highlight and shadow detail
- Correct white balance/color
- Convert to black & white (grayscale only)
- Adjust saturation
- Remove noise, dust spots, flares
- Crop, straighten
- Sharpen (including focus stacking)

All adjustments must appear natural.

If you want to add a border to differentiate from the screen background, it should be single white or gray no wider than 5 pixels.

Not allowed:

- Sky replacement, cloning anything in or out, or moving any objects
- Vignetting
- Blurring, burning or otherwise darkening to obscure parts of the image
- Images of feral animals, like wild horses, and domestic animals such as cattle, goats, and dogs, and cultivated plants
- Watermarks or copyright text
- Use of fisheye lens
- Any evidence of humans in the photo, such as roads, bridges, telephone poles/lines, fences, vehicle tracks, or buildings. The only exception is in cases where a manmade feature is integral to the nature story, such as an osprey in a human-built nest platform or sandhill cranes in a cornfield. See further explanation at the PSA link below.

A summary of the guidelines are provided on the LPS website under Submit Images to a Competition when you select Nature category. For an in-depth guide to nature competition: <https://psa-photo.org/page/nature>

PSA Interclub Competitions

LPS is a member club of the Photographic Society of America and has been participating in three divisions of interclub competition: Nature, Print, and Travel. There are three rounds of competition per season, with deadlines on November 15, February 15, and April 15.

A new rep is needed for the PSA Nature Division interclub competition for the 2023-2024 season. If you are a member of PSA and are willing to take over this responsibility, contact Ardeth Carlson at ardeth.carlson@gmail.com.

LPS members who are interested in having their photos considered for our club's submissions to a PSA interclub competition can contact the LPS rep for more details. Photos are now being collected by the reps for the November round.

PICTORIAL PRINT DIVISION:

Lisa Schnelzer, LPS Rep
lisaschnelzer@gmail.com

Description of the five image categories in the Pictorial Print Division (PPD) can be found on the PSA website: <https://psa-photo.org/page/pictorial-print>. For further information regarding the size of prints, etc., contact Lisa.

TRAVEL DIVISION:

Rich Krebs, LPS Rep
rkrebs318@gmail.com

A definition of a travel photo and a PDF of the Travel Division (PTD) guidelines can be found at <https://psa-photo.org/page/photo-travel>. Rich wants images that show characteristic features of a place or a people. Image size should be a maximum of 1400x1050 pixels.

PSA Photo Festival 2023

The 2023 PSA Photo Festival will be held in Williamsburg, Virginia, September 27–30. Photo tour opportunities are scheduled from the 25th through the 27th. The evening speakers are Dan Burkholder, Ian Plant, and Frans Lanting, and the daytime lineup includes presentations on drone photography, iPhone photography, solving problems in photography, black and white morning photography, location and settings for wildlife photography, and the intriguing topic of “Youth and Adolescence of Image Enhancement.”

The conference hotel is the Hilton Double Tree, with a special group rate of \$144.00 per night, good 3 days prior and 3 days after festival dates of September 27-30, using the specific registration link on the PSA website. Online registration closes on August 15, with on-site registration opening on September 25. For complete information see <https://psa-photo.org/page/photo-festival>

Reasons to Join PSA

An individual membership in the Photographic Society of America is an excellent bargain for photographers seeking to improve their photography skills. PSA offers free online photography courses, study groups, mentorships, and the opportunity to compete individually in the PSA divisions of Nature, Travel, Pictorial Print, Projected Image, Photojournalism, and 3D. In addition, the monthly PSA Journal is available online for download. Educational webinars on a variety of subjects can be viewed at any time.

A new Colorado chapter of PSA has now been established and recently held an inaugural meeting at the gallery of Scott Wilson in Denver. Most chapters meet several times during the year, and the meetings may be a few hours or day-long, with a presenter, workshops, seminars, or photography outings. Chapter membership is available for those who are individual members of PSA.

LPS Competitions: Got Disqualified?

The monthly LPS photo competitions include alternating categories of nature and travel, for which LPS follows the PSA rules. The newsletter generally prints a summary of the rules and provides a link to the more extensive explanation, with example images, on the PSA website. In addition, in submitting an image to an LPS competition, when you select the category, you will see a competition definition for that category. Be sure to read this before submitting your photo.

When a judge notices a submitted image that they feel has not followed the category rules, they bring it to the attention of the other two judges, and they must agree whether to disqualify it or simply choose to score it lower than they otherwise would. When a photo is disqualified, it is up to competition chair Jeff Stephenson to notify the maker and pull the image from the competition.

Most of the rules are pretty cut-and-dried—no cloning, sky replacement, vignetting, or moving or replacing objects. Some of the rules are a little more difficult to determine: whether or not the plant is a cultivar, an animal is feral (an animal in a wild state, often after escape historically from domestication, such as wild horses), the image is unnaturally saturated, or there is evidence of cloning something in or out. There are even some exceptions in the rules regarding “hand of man” in nature photos, whether or not adaptive behavior is involved. In deciding the fate of a photo, there is not always unanimity among the judges, and Jeff sometimes finds himself trying to explain the judges’ decision!

If your photo is removed from one of these competitions, it does not mean it is a bad photo; many times the image in question is beautiful and would score high in an open competition.

LPS June Best of Show

All competition photos, along with the scores, can be viewed on the LPS website under Competition Results. Check the box "Display All."



BOS Topic, Group 5
Lisa Schnelzer



BOS Topic, Group 4
Bob Smith



BOS Open, Group 5
J.R. Schnelzer



BOS Monochrome, Group 5
Mike Wilcox



BOS Monochrome, Group 4
Tim Kathka



BOS Monochrome, Group 2
E. Wayne Snodderly



BOS Open, Group 4
Tim Kathka



BOS Monochrome, Group 3
Bob McDonnell



BOS Open, Group 3
E. Wayne Snodderly

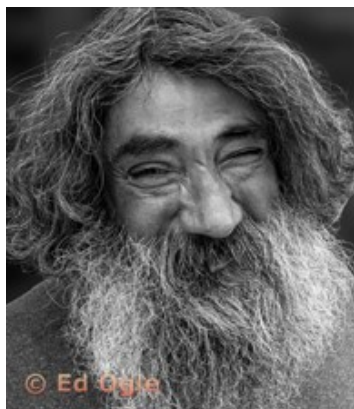


BOS Topic, Group 3
Octavio Noda



BOS Topic, Group 2
E. Wayne Snodderly

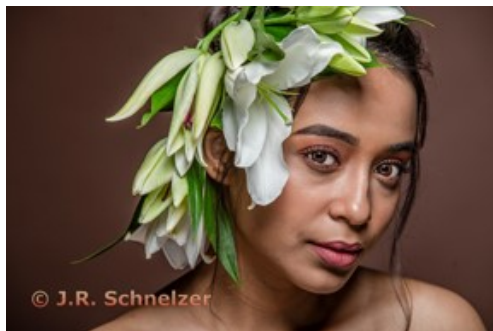
LPS June Award of Merit



AOM Topic, Group 5
Ed Ogle



AOM Open, Group 5
Ruth Sprain



AOM Topic, Group 5
J.R. Schnelzer



AOM Open, Group 4
Dave Van Riper



AOM Monochrome, Group 5
Gerald Baumann



AOM Topic, Group 4
Mike Teska



AOM Open, Group 3
Jenny Anderson



AOM Monochrome, Group 4
Kurt Flock



AOM Topic, Group 3
Amanda Morris



AOM Open, Group 3
Octavio Noda



AOM Monochrome, Group 3
Amanda Morris

Photo Editing Programs

Smart Photo Editor—This is a purchased product from Anthropics.com with numerous editing tools and hundreds of pages of special effects you can add to your uploaded photo. This can be installed as an external editor to Photoshop and Lightroom, in the same way as the Topaz and NIK filters.

Lunapic—It's a fun free online photo editor that includes editing tools and a plethora of filters and art effects, including sketching, painting, and animation.

Tuxpi.com—Add free interesting effects to your photo, such as kaleidoscopes, swirls, specialty borders, and re-toning.

BeFunky—The free version of this app, available for Apple and Android phones plus desktop download, provides a lot of features that allow you to download your edited images without a watermark; a subscription price of \$60 per year gives access to all of the features, or pay month-to-month and unsubscribe at any time. In addition to really cool art effects, which are very fun to play with, there are quite extensive editing tools that are intuitive and easy to use, along with popup explanations of how to use the tool for novice image editors.

LPS Board Meetings Open to All Members

The LPS board holds its meetings in person at the Perkins restaurant on West Eisenhower in Loveland. The meetings are open to all members. If you are interested in seeing how your leadership team tends to club business, you are welcome to attend. Information is on page 1 of the newsletter.

LPS Membership

Although LPS welcomes guests to our monthly club meetings, there are benefits to joining as a member. If you like to see how your images fare in competition, you can submit up to 3 photos each month in our club competitions; you also have the opportunity to have an image submitted in the PSA interclub competitions. If you hate competitions (!), the club is also a great place to meet other photographers, get critiques and comments at the Third Monday Review sessions, find photo-op events and activities, and watch the recordings of meeting presentations. You might enjoy organizing and leading field trips or participating in them. You can also meet up with LPS members at the monthly Saturday morning Bull Sessions.

Your membership dues also fund our annual Youth Showcase, which encourages photographers from our northern Colorado high schools to pursue the art of photography and provides them with an opportunity to have their images displayed with national/international exposure at the annual PSA Photo Festival.

The leadership team listed on page 1 of the newsletter is always open to hearing your ideas for ways to keep LPS vital and energized. You can also email the InFocus editor at ardeth.carlson@gmail.com.

LPS Speaker Recordings

As a reminder, LPS meeting presentations have been recorded and posted ever since the start of COVID and are available to view at any time. You can find links to the videos on the LPS website; when you **login**, go to **Membership>Resource Links>Videos**. Most of our speakers have graciously allowed us to record their presentations as long as they were made available to LPS members only. Please *do not share* these links with non-members unless they are marked as shareable in the list.

Member Submissions Request

Invitation to Submit an Article

The newsletter editor is always looking for material that would be of interest to our members for future issues of InFocus. There are many subjects for which you can share your expertise or experiences, such as post-processing techniques, camera equipment, and great locations to shoot.

If you aren't confident in your writing ability, the editor will help polish your article for publication. Contributions by LPS members will help this newsletter be relevant and of value to our readers. Send your ideas or articles to ardeth.carlson@gmail.com.



Share your photos and keep in touch with LPS when you join our Facebook group **Members of Loveland Photographic Society**. You must be a current member to join the group.

JOIN THE CLUB

If you are reading this newsletter as a non-member and would like to join the Loveland Photographic Society, go to the main page on the www.lps.cc website and click on **Membership > Join or Renew**. Annual dues are \$45.