

# LPS InFocus

Loveland Photographic Society  
Monthly Newsletter

March 2024



## Photo Editing Demonstration

Presented by Michael Wilcox & Mike Teska

In February, members shared their edited versions of photos in Part 1 of the “New Eyes for Photo Editing” sessions. As a continuation of the dialogue about the editing process, Mike Wilcox and Mike Teska will explain and demonstrate the editing process they use to improve sample photos. Gain ideas and techniques for your own editing as you watch the process modeled.

Mike Wilcox is a fine-art photographer whose photographs have been published in national publications, including USA Today, and have won multiple national awards from the Photographic Society of America. He serves as mentor chair of LPS and also provides comments as the moderator of the third-Monday Photo Review Sessions. He is a member and past president of the Thompson Valley Art League/Lincoln Gallery. He was one of two photographers accepted into the 2015 Colorado Governor’s Art Show and the only photographer at the 2017 Colorado Governor’s Art Show. For the last four years, Mike has been successfully selling his images at the Lincoln Gallery, Loveland’s Art in the Park, and at juried shows throughout Colorado and Wyoming.

Mike Teska served as the moderator of the third-Monday Photo Review sessions beginning in 2020, taking over from long-time moderator Mike Wilcox. When the LPS webmaster ended his term, Teska agreed to take on that role and turned the duties as Monday Photo Review moderator back to Wilcox.



Teska says he is hooked on Lightroom, Photoshop, and the whole Adobe Creative Cloud. He appreciates the Adobe Live sessions on Behance to learn more about the tools but also about the art of making great images. Like many modern tools, especially software tools, there are hidden and advanced features that can really make taking great images easier. He also gives kudos to LPS, where he has learned a lot from the outstanding images and comments from LPS members.

*{Photos by Mike Wilcox and Mike Teska not necessarily the ones being demonstrated at the meeting}*



## Club Meetings

Monthly club meetings are hybrid in-person plus Zoom; the Saturday Chat is in-person only; the Photo Review Session is online only.  
**Note the new meeting links; no pass code is needed.**

**Tuesday, March 5**

**LPS Board Meeting**

Perkins Restaurant

2222 W. Eisenhower, Loveland

6:30 PM

Open to All

**Saturday, March 9**

**Saturday Photo Chat**

Loveland Panera Bread

1550 Fall River Drive, Loveland

8:30–10:30 AM

**Monday, March 11**

**Monthly Club Meeting**

Trinity United Methodist Church

801 Cleveland Avenue, Loveland

Social time 6:00 PM

Meeting 6:30–8:30 PM

[https://us06web.zoom.us/](https://us06web.zoom.us/j/93226580276?pwd=eWxibVYzTGpWbWlYYzlsdGNwbWZRdz09)

[j/93226580276?](https://us06web.zoom.us/j/93226580276?pwd=eWxibVYzTGpWbWlYYzlsdGNwbWZRdz09)

[pwd=eWxibVYzTGpWbWlYYzlsdGN](https://us06web.zoom.us/j/93226580276?pwd=eWxibVYzTGpWbWlYYzlsdGNwbWZRdz09)

[wbWZRdz09](https://us06web.zoom.us/j/93226580276?pwd=eWxibVYzTGpWbWlYYzlsdGNwbWZRdz09)

**Monday, March 18**

**Photo Review Session**

6:30–8:30 PM

[https://us06web.zoom.us/](https://us06web.zoom.us/j/95087721084?pwd=eXllMndWenQyaCt6WUV6RmpenlWdz09)

[j/95087721084?](https://us06web.zoom.us/j/95087721084?pwd=eXllMndWenQyaCt6WUV6RmpenlWdz09)

[pwd=eXllMndWenQyaCt6WUV6Rmp](https://us06web.zoom.us/j/95087721084?pwd=eXllMndWenQyaCt6WUV6RmpenlWdz09)

[penlWdz09](https://us06web.zoom.us/j/95087721084?pwd=eXllMndWenQyaCt6WUV6RmpenlWdz09)

## SERVICE

### Publicity Chair Duties

We are still looking for someone to take on the role of publicizing our club. Currently Jerre Johnson sends a notice of our club meeting to Loveland's Reporter-Herald newspaper to be included in their meeting notes section, and Ardeth Carlson oversees the Members-only Facebook group, creating posts with information about the upcoming meeting topic and encouraging discussions. We also have a public Facebook group. Having one person who can keep up with social media content and can come up with other ways to boost our presence in the community would be welcome.

### Summer Picnic Planning Committee

Plans need to be made well in advance for a club picnic, particularly if it will be held at one of the Loveland Parks & Rec facilities such as the various picnic shelters which require reservations. If you are able to serve on the planning committee, talk to any of the board members or email [ardeth.carlson@gmail.com](mailto:ardeth.carlson@gmail.com).

### Invitation to Submit an Article

The newsletter editor is always looking for material that would be of interest to our members for future issues of InFocus. There are many subjects for which you can share your expertise or experiences, such as post-processing techniques, camera equipment, and great locations to shoot.

If you aren't confident in your writing ability, the editor will help polish your article for publication. Contributions by LPS members will help this newsletter be relevant and of value to our readers. Send your ideas or articles to [ardeth.carlson@gmail.com](mailto:ardeth.carlson@gmail.com).

## LPS Photojournalism Dialogue Group

ARDETH CARLSON

I would like to establish a photojournalism dialogue group for LPS members in which participants would submit a photo probably once a month, which would be viewed and commented on by members of the group. The goal would be to hone our understanding of what photojournalism entails and encourage each other to improve and advance our skills in this genre of photography.

I have already enrolled our club in PSA's interclub competition in the Photojournalism Division (PJD), and this LPS group could also be helpful as I select our club entries.

I envision setting up a private Google group in which members would register and then be able to submit photos and also comment on and offer suggestions on the photos submitted by other group members. I am waiting to set up a group until I hear from at least three other LPS members who will join and commit to actively participate.

Photojournalism entries are:

- Images with informative content and emotional impact
- Reflecting the human presence in our world
- The journalistic (storytelling) value of the image receives priority over pictorial quality
- When Human Interest is specified, those images depict a person or persons in an interactive, emotional or unusual situation, excluding sports action.

Images that misrepresent the truth, such as those from events or activities arranged specifically for photography, or of subjects directed or hired for photography, are not eligible.

If you are ready to join this group or just have questions, contact me at [ardeth.carlson@gmail.com](mailto:ardeth.carlson@gmail.com).

### Sharing Your Photos

If you use the subscription Adobe Photoshop Creative Cloud, you can take advantage of their Adobe Portfolio feature. Examples of portfolio layouts can help you get started. Having your own portfolio gives you a link to provide on social media sites or give to people who are interested in seeing your work.

Another way to share photos is on Flickr.com. You can set up a free account or pay for an annual "Pro" subscription. Either way, you can receive comments on your photos and participate in various challenges such as Crazy Tuesday and Flickr Friday. Get out there with your camera, and then don't let those photos just sit in a computer file!

## LPS Board of Directors

### ELECTED OFFICERS

PRESIDENT

— ARDETH CARLSON

VICE PRESIDENT

— RICH KREBS

TREASURER/MEMBERSHIP

— JEN LAMMEY

SECRETARY

JERRE JOHNSON

### CHAIRPERSONS

PROGRAMS

—TIM KATHKA

—RICH KREBS

— RUTH SPRAIN

COMPETITION

— ROB HUFFSMITH

WEBMASTER

— MIKE TESKA

MENTOR

—MIKE WILCOX

PSA REPRESENTATIVE

LISA SCHNELZER

SCHOLARSHIPS

— RUTH SPRAIN

NEWSLETTER

—ARDETH CARLSON

FIELD TRIPS

—JIM ROODE

FORUM DIRECTOR

—INGRID JACOBSON

GREETING HOST

—BILL LUNDQUIST

The LPS Board holds its meetings in person at the Perkins restaurant on West Eisenhower in Loveland. The meetings are open to all members. If you are interested in seeing how your leadership team tends to club business, you are welcome to attend, although only Board members can vote. Information is on page 1 of the newsletter.



## MEMBER PROFILE

### Jim Roode

Jim Roode has joined the LPS Board of Directors as the Field Trips Chair for LPS and is hoping to re-energize this feature of LPS membership.

Jim is a relatively new member of LPS, having joined in October of 2023. He is a lifetime avid hunter and fly fisherman and is active in Loveland Open Space and Trails Commission, Loveland Fishing Club, and Friends of the Big Thompson. He is serving in his 17th year as Colorado Parks and Wildlife Hunt Master and is a retired Master Hunter Education Instructor.

He has been a Loveland resident for 40-plus years. A 1999 graduate of CSU, he has had careers as a building framer for 16 years, construction estimator and design for 19 years, and civil engineering, now retired. He also served with the 82nd Airborne in the Dominican Republic and the 101st Airborne in Vietnam. He has been married for over 60 years and has a son and two grandsons.

He enjoys a number of interesting hobbies. In addition to photography and gardening, he is a U.S. Chess Federation Expert, placing 3rd twice in the USCF Correspondence Championship, and is the current administrator for the U.S. Online Vote Chess Team. He also likes storytelling or writing about adventures.

Jim would be happy to hear from LPS members with ideas and suggestions for organized group photography activities.



## Follow-up on Field Trips Discussion

In a discussion on field trips at the February meeting, new Field Trips Chair Jim Roode specifically queried each attendee as to whether or not they were interested in participating in a field trip and what kind of topics, events, or places were compelling to them. This resulted in an extremely helpful list of possibilities for 2024 activities, which were recorded by our secretary, Jerre Johnson.

General categories or topics included landscapes, wildflowers/botany, architecture, macro, street photography, night sky photography, fall foliage, machinery, transportation (trains, planes & automobiles), historical places, and the wild west.

Ideas for specific locations or events: 4th of July celebration in Loveland, Badlands/Sand Dunes near Walden, Bisti Badlands in New Mexico, Great Sand Dunes National Park, Yellowstone in winter, Never Summer Rodeo in Walden (June), Union Pacific steam engine in Cheyenne, and the Botanic Gardens in Denver.

Some members indicated a willingness to participate in overnight or multiple-day trips, either camping (or specifically not camping!) or involving hotel stays.

Jim has created a topic called "What would you like to see in a field trip" in the "Field Trips—LPS Sponsored" discussion forum, and he would appreciate continued response there, including by members who were attending the February meeting online or who were not able to attend the meeting.

If you want to post replies or comments to any of the topics on the website Discussion Forums, click on "View Topic," then "Create Reply," and in the drop-down page, type your response in the open box above "Design/HTML/Preview." Your reply will then be visible to all members who view the topic. To receive email updates when other members respond to the topic, click on "Subscribe."

## Larimer County Fair Photography Competition

Open Class Photography is a popular division of the Larimer County Fair and provides photographers with a wonderful venue to exhibit up to three images.

The 2024 county fair will be held from August 2 through 6 at The Ranch Events Complex, 5280 Arena Circle, in Loveland. Check-in of photography entries will be on Tuesday, July 30, between 4:00 and 7:00 PM.

The Larimer County Fair Book contains all the entry guidelines, classes, and descriptions. Beginning on March 1, access the 2024 fair book online at: <https://www.treventscomplex.com/events/larimer-county-fair/4-h-and-open-class>.

Pre-registration entry is recommended through an online Fair Entry system beginning Friday, March 1, through Tuesday, July 23, at 11:50 PM. Alternatively, written entry forms can be requested through the Competitions Coordinator, Laura Boldt, at 970-619-4023, [boldtla@larimer.org](mailto:boldtla@larimer.org). Printed entries can be emailed, hand delivered, or mailed to the Larimer County Fair Office, 5280 Arena Circle, Ste #100, Loveland, CO 80538. The Entry Office opens at 8:30 a.m. and closes at 4:30 p.m. Postmarks, faxes, or email pre-registration will be accepted only if posted on or before July 23rd at 4:30 PM. Entries after that date will only be accepted at the in-person check-in on July 30.

There are specific rules regarding photo dimensions and mounting which must be followed in order to be accepted at check-in, so it is important to understand these rules before bringing photos to submit on check-in day.

The photos will be judged on July 31, with ribbons awarded for 1st, 2nd, and 3rd place and special awards for Champion and Reserve Champion in each competition division and Best of Show and Reserve Best of Show overall.

# Competition Corner

## Submitting Pictures for the Monthly Competition or Photo Review Session

- Log on to the LPS website
- Mouse over the **Competitions** dropdown on the Home Page.
- Select menu item:  
**Submit images to a Competition**
- Select the Competition category or the Third Monday Photo Review
- At the bottom of the screen, click on **Upload images into the Competition.**
- Then click on the button **Select** which will open a window on your computer to select an image.
- Click on **Save Images and Proceed to Edit Page.**
- Type in a title and click on **Save any changes and return to original page.**
- You can replace any photo, up to the submission deadline, if desired.

The monthly competitions allow a single image per category. The photo review session allows up to three images.

## New Members

We are happy to welcome new member Karen Giron.

## March Competition

### Competition Categories

Open Projected (included every month)  
Travel (rotating category)  
Monthly Topic: Indoor Magic

### Submission Deadline

Before Midnight, Monday, March 4

### Please keep the judging criteria in mind:

**Impact and Viewer Interest**—"Wow" factor is the nebulous quality where an image "pops." This subjective aspect of judging should not preempt the technical or composition aspects of an image.

**Composition**—Good composition is a pleasing arrangement of the elements in an image. There are many guidelines for good composition that judges may consider.

**Technical Quality**—This includes sharpness, focus, color, tonal scale, contrast, appropriate depth of field and other qualities. Consideration is also given for the effect the photographer was trying to achieve such as high key, multiple exposure, or selective focus.

**Monthly Topics**—The subject matter should be related in some manner to the topic. While there are no formal deductions or penalties, judges may reduce their overall score if they feel the image does not align with the monthly topic. With that said, creative interpretation is encouraged, except in categories with specific rules such as monochrome.

**Open Projected**—The image must begin as a photograph. From there, it is up to you. Any photograph may be entered in the Open Projected category.

## March Competition Groups

Participation in a group is determined by the average of the member's 9 previous LPS competition scores. Here are the groups for the February competition:

Group 5—Kevin Burkhardt, Ingrid Jacobson, J.R. Schnelzer, Lisa Schnelzer, Jeff Stephenson, Mike Teska

Group 4—Gerald Baumann, Max Coopwood, Tim Kathka, Dan O'Donnell, Ed Ogle, Malcolm Patten, Laurie Paulik, Josemaria Quera, Bob Smith, Ruth Sprain, Mike Wilcox

Group 3—Jenny Anderson, Ardeth Carlson, Kevin Clarke, Kevin Fettig, Kurt Flock, Marvin Froistad, Tim Hitchcock, Robert Huffsmith, Jerre Johnson, Bob McDonnell, Octavio Noda, Alan Schuppan, Dave Van Riper

Group 2—Rich Krebs, Wayne Snodderly

All other members will compete in Group 1 until the member has 9 submitted images that reach an averaged score for a different group. An individual member's competition group might vary from month to month.

The range of 9-score averages in LPS competition are as follows:

Group 5 > 22.3 (greater than)

Group 4 ≤ 22.3 (more than 21.3, less than 22.3)

Group 3 ≤ 21.3 (between 20.0 and 21.3)

Group 2 ≤ 20.0 (between 18.6 and 20.0)

Group 1 ≤ 18.6 (less than 18.6, and all members who have not yet entered 9 competitions. )

## 2024 Competition Topics

Specific assignments are to be determined on a month-by-month basis; these are the topics for the year listed in alphabetical order:

Autumn Splendor  
Landscapes  
Macro  
Still Capture  
Street Photography  
The Color Orange  
Transportation  
Zigs & Zags



## March Monthly Topic: Indoor Magic

ROBERT HUFFSMITH, COMPETITION CHAIR

I was thinking that March is a typical indoor month sometimes due to the weather, so that led me to indoor photography. Some photographers do still-life images indoors; others, portraits; and even macro photography. All of those are acceptable in this category.

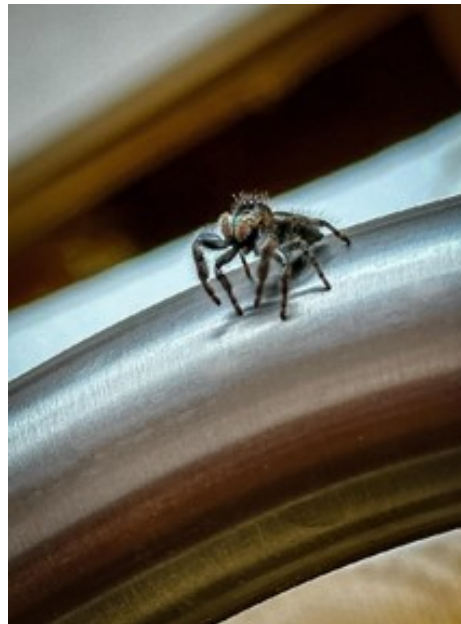
I decided to use the word "magic" to cause a sense of something different. Since the rules allow for basically anything as long as it starts as a photograph, the idea is to think "indoor" and create something magical. As one example, the photographer can capture images of the inside of their home at 3:00 in the morning in the darkness with a glow coming in the window from a street light, capturing what most people don't typically see because they are usually sleeping.

Maybe a consideration of something magical might be as simple as a photograph of a deck of cards because magicians use them for their tricks, and we typically use cards indoors. This is also a good category for abstract work with an indoor original capture.

Allow the creative influences to flow. Here are a few of my ideas of images that fit this category.



*Photos © Robert Huffsmith*



## Travel Category

A Photo Travel image expresses the **characteristic features or culture of a land** as they are found naturally. In the case of landscapes or buildings, it is not necessary to know "where the place is." The image only needs to have **identifiable features** so that the place can be recognized by someone visiting it.

Close-up pictures of people or objects must include features that **provide information about the location**. This means that the photo should include some elements of the setting.

The **only allowable adjustments**:

- Removal of dust or digital noise
- Restoration of the appearance of the original scene
- Complete conversion to greyscale monochrome (no spot or selective color).

Other derivations, including infrared, are not permitted. Techniques that add, relocate, replace or remove any element of the original image, except by cropping, are not permitted. Fish-eye images that are distorted or partial desaturation of areas of the image is not allowed.

**All images must look natural.** Oversaturated, overly sharpened, and other images with unnatural artifacts, such as halos or strong vignetting, should be given lower scores in judging.

For a full guide from PSA, use this link, then **Photo Travel** at the bottom, click on Guide for Photo Travel Judges and Chairs **pdf**:

<https://psa-photo.org/page/photo-travel>

The description of the travel category can also be found on the LPS website under **Competitions>PSA Interclub Image Competitions>PSA Guidelines for Photo Travel Images**.

## LPS February Best of Show

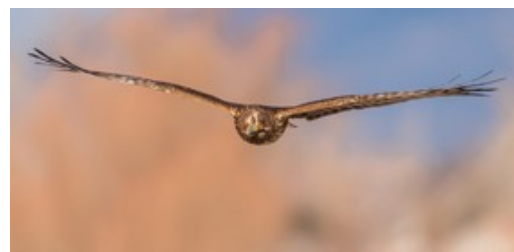
All competition photos and scores can be viewed on the LPS website under Competition Results. Check the box "Display All."



BOS Topic, Group 5  
J.R. Schnelzer



BOS Open, Group 5  
J.R. Schnelzer



BOS Nature, Group 4  
Dan O'Donnell



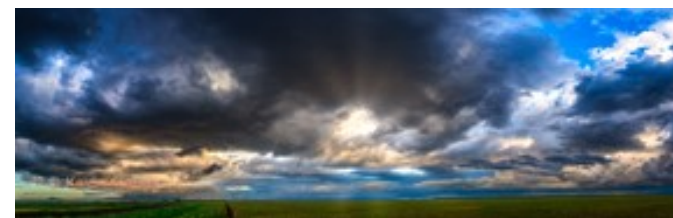
BOS Open, Group 4  
Max Coopwood



BOS Nature, Group 5  
Laurie Paulik



BOS Nature, Group 3  
Josemaria Quera



BOS Open, Group 3  
Kevin Clarke



BOS Open, Group 2  
Wayne Snodderly



BOS Topic, Group 3  
Josemaria Quera



BOS Topic, Group 4  
Dan O'Donnell



BOS Topic, Group 2  
Wayne Snodderly



BOS Nature, Group 2  
Wayne Snodderly



## LPS February Award of Merit



AOM Topic, Group 5  
Kevin Burkhart



AOM Open, Group 5  
Lisa Schnelzer



AOM Nature, Group 5  
J.R. Schnelzer



AOM Topic, Group 4  
Gerald Baumann



AOM Open, Group 4  
Ed Ogle



AOM Nature, Group 4  
Malcolm Patten



AOM Topic, Group 3  
Dave Van Riper



AOM Open, Group 3  
Josemaria Quera



AOM Nature, Group 3  
Kevin Fettig

## PSA Interclub Competitions

LPS is a member club of the Photographic Society of America and has been participating in three divisions of interclub competition: Nature, Print, and Travel. There are three rounds of competition per season, with deadlines on November 15, February 15, and April 15.

LPS members who are interested in having their photos considered for our club's submissions to a PSA interclub competition can contact the LPS rep for more details.

### NATURE DIVISION:

**Dan O'Donnell, LPS Rep**  
[djod@me.com](mailto:djod@me.com)

Nature Division (ND) image guidelines can be found at <https://psa-photo.org/page/nature>. Dan is looking for images that illustrate an interesting behavior or a unique point of view, not just a landscape or wildlife that is in good focus! Storytelling is an important part of the image. Maximum image size is 1920x1080 pixels.

### PICTORIAL PRINT DIVISION:

**Lisa Schnelzer, LPS Rep**  
[lisaschnelzer@gmail.com](mailto:lisaschnelzer@gmail.com)

The five image categories in the Pictorial Print Division (PPD) are: Small Color, Large Color, Small Monochrome, Large Monochrome, and Creative Altered Reality. For further information regarding submissions, contact Lisa.

### PHOTOJOURNALISM DIVISION:

**Ardeth Carlson, LPS Rep**  
[ardeth.carlson@gmail.com](mailto:ardeth.carlson@gmail.com)

Information about the Photojournalism Division (PJD) and guidelines for photojournalism images can be found at <https://psa-photo.org/page/photojournalism>. Ardeth is looking for photos that contain informative content and emotional impact, reflecting the human presence in our world. The image should tell a coherent visual story. Maximum image size is 1920x1080 pixels.

### TRAVEL DIVISION:

**Rich Krebs, LPS Rep**  
[rkrebs318@gmail.com](mailto:rkrebs318@gmail.com)

A definition of a travel photo and a PDF of the Travel Division (PTD) guidelines can be found at <https://psa-photo.org/page/photo-travel>. Rich is collecting images for 2023-2024 now and would like images that show characteristic features of a place or a people. Image size should be a maximum of 1920x1080 pixels.

## Interclub Photos Needed

The LPS reps for the PSA interclub competitions are asking members to submit photos for round 3. The PSA deadline is April 15, so the reps would like to have entries at least a few days before that. LPS members do not need to be individual members of PSA.

Photographers who have photos submitted in a PSA interclub competition must have a signed release form on file. The signed release is valid for three years from the date of signature, after which a new signed release must be submitted to continue participating in interclub competitions. The signed release forms are obtained by the LPS reps, who will contact a member who submits a photo but does not have a current release.



MEMBER ORGANIZATION

## PSA Photo Festival 2024

The annual Photographic Society of America Photo Festival will be held in Tucson, Arizona, this year, with photo tours beginning on September 15 and meetings and programs being held from the 18th through the 21st. The conference hotel is the Loews Ventana Canyon Resort, with special rates for PSA conference attendees and waiver of resort fees. Early-bird registration for the conference runs from April 1 through April 30. For more information and to stay updated with festival plans, go to: <https://psa-photo.org/page/photo-festival>

## Reasons to Join PSA

An individual membership in the Photographic Society of America is an excellent bargain for photographers seeking to improve their photography skills. PSA offers free online photography courses, study groups, mentorships, and the opportunity to compete individually in the PSA divisions of Nature, Travel, Pictorial Print, Projected Image, Photojournalism, and 3D. Educational webinars on a variety of subjects can be viewed at any time.

In addition, the monthly PSA Journal is available online for download. This is a beautiful publication with a lot of information about photography locations and ideas for different photo genres plus discussion on relevant topics about photography in general.

A new Colorado chapter of PSA has now been established. Most chapters meet several times during the year, and the meetings may be a few hours or day long, with a presenter, workshops, seminars, or photography outings. Chapter membership is available for those who are individual PSA members.

The annual PSA Photo Festival is a great way to meet photographers from all over the U.S. in addition to members from other countries. The program presenters are topnotch, and the tours provide fun field-trip experiences. Save \$80 on the conference registration if you join before May 1.



## Photographing Colorado Steam Trains

GERALD BAUMANN

I wasn't able to attend the February meeting, but an LPS friend took notes for me during the meeting and gave me a summary and said there was some interest in photographing steam trains.

I live in Durango. We have two main photographic events each year on the D&SNGRR (Durango & Silverton Narrow Gauge Railroad) that runs from Durango to Silverton. I have been a volunteer on those for the better part of 15 years. The winter event was this past weekend. They take photographers on an all day ride up the Canyon about 30 miles (the last 15 miles to Silverton is impossible to keep open in winter due to avalanches). They also do a night shoot in the train yard by the station, roundhouse, and turntable.

The next photo event will be in mid October, scheduled for Oct. 16–17. It includes an overnight stay at the Grand Imperial Hotel in Silverton. In a nutshell, they go to the photo spot, stop and let everyone get off; they back up out of sight, and then they do a run-by as everyone photographs and videos the train. Then the train backs up, everyone reboards, and off to the next photo op. Typically they do two or three run-bys at each stop.

There will also be a K-28 Anniversary Run on August 27. The K-28s are the smaller engines they run. They are turning 100 years old. They will go all the way up to Silverton and back, with two run-bys in each direction.

The unfortunate reality is that the photo ops from the everyday trains (while riding as a passenger) are lackluster at best. You need to be off the train and capture it running by, charging up the grade under full throttle (best steam/smoke plumes). I have a number of special places accessible by car that I use throughout the year, but they are limited. The train breaks away from the road when it enters the Animas Canyon, and you don't see it again till 30 miles later, emerging the canyon just before Silverton.

I have also ridden the C&T (Cumbres & Toltec Scenic Railroad) that runs between Chama, New Mexico, and Antonito, Colorado. Their photo trains run with only freight cars; photographers ride from one run-by to another in gondolas, box cars, and the caboose. However, their normal non-photo runs use "pretend" passenger cars—not authentic, built in recent times on flat-car frames. Only the C&T photo trains run the authentic freight cars, and the C&T owns no authentic passenger cars. Whereas the D&SNG out of Durango runs authentic rolling stock all year long, the C&T does it only for photo trains.

Of course, there's the Georgetown loop nearer to where LPS members live. They have both conventional and 3-cylinder Lima Shay locomotives. But it is really just a tourist train.

It is a serious investment for folks on the front range, a minimum of two nights in a hotel here plus the train fare. I might suggest that for those who don't mind adding a day to their stay, they might enjoy an extra day in town so they have one day riding the train and one day photographing it as it runs by.

*[Jerry Baumann is an active member of LPS since June of 2022.]*



## Saturday Photo Chat

The Saturday Photo Chat, formerly known as the “Bull Session,” is an informal get-together of photographers to talk about places to photograph, gear, photo software, and almost anything about photography. This has been an ongoing activity for many years, headed by long-time LPS member Bill Standerfer. The meetings are on the second Saturday of the month at 8:30 AM at Panera on east Highway 34 in Loveland. If you have any questions, contact Bill at [billstanderfer@outlook.com](mailto:billstanderfer@outlook.com).

## Third Monday Photo Review

An excellent way to get feedback on your photos and for experienced photographers to share their knowledge is to participate in the Monday Photo Review sessions via Zoom on the third Monday of each month. Participants are allowed to submit three photos no later than noon of the session day. The review is mentored by Mike Wilcox, who welcomes and encourages comments and suggestions by all participants. Many members have reported that they have received a greater knowledge of photo techniques and also found it helpful to see their photos in the eyes of other photographers. Because judges of the monthly competition most often do not have time to offer critiques on all of the competition photos, the third Monday review provides that helpful aspect of improving our craft. Click on the link on page 1 of the newsletter to join the Zoom meeting.

## Newsletter Index

To find articles in previous issues of the LPS InFocus newsletter, to the Newsletter Index on the website. The titles of the articles are displayed in alphabetical order. To find a specific article, the index shows the year and month of the issue of the newsletter and page number on which the article appears. In order to look at the article, you then need to go back to Newsletters and select the issue you want.

## LPS Membership

Although LPS welcomes guests to our monthly club meetings, there are benefits to joining as a member. If you like to see how your images fare in competition, you can submit up to 3 photos each month in our club competitions; you also have the opportunity to have an image submitted in the PSA interclub competitions.

If you hate competitions (!), the club is also a great place to meet other photographers, get critiques and comments at the Third Monday Review sessions, find photo-op events and activities, and watch the recordings of meeting presentations. You might enjoy organizing and leading field trips or participating in them. You can also meet up with LPS members at the monthly Saturday morning Bull Sessions.

Your membership dues also fund our annual Youth Showcase, which encourages photographers from our northern Colorado high schools to pursue the art of photography and provides them with an opportunity to have their images displayed with national/international exposure at the annual PSA Photo Festival.

### JOIN THE CLUB

If you are reading this newsletter as a non-member and would like to join the Loveland Photographic Society, go to the main page on the [www.lps.cc](http://www.lps.cc) website and click on **Membership > Join or Renew**. Annual dues are \$45.



Share your photos and keep in touch with LPS when you join our Facebook group **Members of Loveland Photographic Society**. You must be a current member to join the group.

## March Photo Opps

**March 15-17**

### Frozen Dead Guy Days, Estes Park

Free-to-watch events:

Friday—Bernie's Beach Party, Tattoo Popup

Sunday—Polar Plunge

On Saturday, tickets are required for all activities at the Estes Park Events Complex, including the popular coffin races! \$47.45

For details and a schedule for all three days:

<https://frozendeadguydays.com/schedule-list/>

**March 23, 10 AM**

### International 5K Color Run, Ft. Collins

Laurel Hall, CSU Campus, in partnership with CSU's Indian Students Association to coincide with the annual Hindu celebration of Holi, which honors Colors, Love, and Spring

Free to watch, registration fee required to run (but don't run with your camera!)

For details and to see the race route:

<https://international.colostate.edu/iec/5k-run/>

## LPS InFocus

The e-Newsletter for the  
Loveland Photographic Society

### Mailing Address

P. O. Box 7604 • Loveland, CO 80537

### Public Facebook Page

[https://www.facebook.com/  
LovelandPhotographicSociety/](https://www.facebook.com/LovelandPhotographicSociety/)

### Members Only Facebook Group

[https://www.facebook.com/  
groups/237033251716/](https://www.facebook.com/groups/237033251716/)