

LPS InFocus

Loveland Photographic Society
Monthly Newsletter

April 2024



Impressionistic Photography: How to Use Your Camera (or Smartphone) as a Paintbrush

Presented by Charles Needle

Unlock your creative potential and discover how to craft impressionistic-looking photographs using nothing more than your digital camera or smartphone. Using an easy-to-understand, step-by-step approach, he will define and illustrate techniques such as long-exposure pan/tilt, "multiple-exposure Monet" (a technique Charles invented), multiple-exposure rotate & zoom, soft-glow montage and composite montage. He will also explain how to use a free script in Photoshop to accomplish this same look, if your camera does not have built-in multiple-exposure capability. You'll learn how to see in new ways and take your photography to an entirely new, mind-blowing level!

Charles Needle is an award-winning Colorado-based fine art photographer with a unique eye for design and artistic interpretation. His popular "Art of Nature" creative macro workshops have attracted students nationwide. Charles has authored three cutting-edge instructional books: *Tiny Worlds: Creative Macro Photography Skills*, *Impressionistic Photography: A Field Guide to Using Your Camera as a Paintbrush*, and *Creative Macro Photography: Professional Tips & Techniques*.

An accomplished speaker, photography juror and teacher with international workshops in the United Kingdom (private gardens of Southern England), Monet's Garden (Giverny, France for 20 years in a row, with exclusive private access), Keukenhof Gardens (Holland) and The Butchart Gardens (Canada), Charles is a North American Nature Photography Association (NANPA) Showcase Award winner for 18 years in a row, and placed in the Top Ten and Top 26 image categories two of those years.

Charles's photographs have been selected for publication in Nature's Best, Outdoor Photographer magazine, Nature Photographer magazine, Inner Reflections Engagement Calendar, The Chicago Tribune, SELF Magazine, and are in private and public collections nationwide and abroad. To learn more about Charles's work, including his workshop and private lesson offerings, visit www.charlesneedlephoto.com.

This presentation will not be recorded, so be sure to attend the meeting, either in person or via Zoom, if at all possible.



Club Meetings

Monthly club meetings are hybrid in-person plus Zoom; the Saturday Chat is in-person only; the Third Monday Review session is online only. **Note the new meeting links; no pass code is needed.**

Monday, April 8

Monthly Club Meeting

Trinity United Methodist Church
801 Cleveland Avenue, Loveland

Social time 6:00 PM

Meeting 6:30–8:30 PM

[https://us06web.zoom.us/j/93226580276?](https://us06web.zoom.us/j/93226580276?pwd=eWxtbVYzTGpWbWlYY3lscGNwbWZRdz09)

[j/93226580276?pwd=eWxtbVYzTGpWbWlYY3lscGNwbWZRdz09](https://us06web.zoom.us/j/93226580276?pwd=eWxtbVYzTGpWbWlYY3lscGNwbWZRdz09)

Saturday, April 13

Saturday Photo Chat

Loveland Panera Bread

1550 Fall River Drive, Loveland
8:30–10:30 AM

Monday, April 15

Third Monday Photo Review

6:30–8:30 PM

[https://us06web.zoom.us/j/95087721084?](https://us06web.zoom.us/j/95087721084?pwd=eXlIMndWenQyaCt6WUV6Rmp)

[j/95087721084?pwd=eXlIMndWenQyaCt6WUV6Rmp](https://us06web.zoom.us/j/95087721084?pwd=eXlIMndWenQyaCt6WUV6Rmp)

Tuesday, May 7

LPS Board Meeting

Perkins Restaurant

2222 W. Eisenhower, Loveland
6:30 PM

Open to All

SERVICE

Summer Picnic Planning Committee

Plans need to be made well in advance for a club picnic, particularly if it will be held at one of the Loveland Parks & Rec facilities such as the various picnic shelters which require reservations. If you are able to serve on the planning committee, talk to any of the board members or email ardeth.carlson@gmail.com.

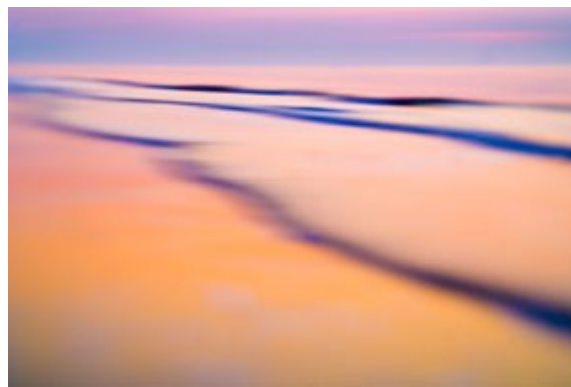
Field Trips Discussion Forum Default Subscription

Although at a recent club meeting most of the attendees indicated they are interested in field trips, new Field Trips Chair Jim Roode has been disappointed in the lack of response to his posts in the discussion forums on the LPS website.

At the last LPS Board meeting, it was felt perhaps many members aren't aware of the discussion forum and how to use it. In lieu of having all field trip proposals emailed to all members by the FT chair, it was decided by the Board to automatically subscribe all members to the Field Trips discussion forum and then allow members who are not interested in or available to participate in field trips to opt out.

What this means is that you will be receiving all the member posts related to proposed or upcoming field trips; if you do not want to continue receiving these, on the LPS website, go to the tab Discussion Forums, and in the drop-down, Field Trips is the second forum. Click on "Edit Subscription" and uncheck or check the boxes to set your preferences.

Only the Field Trips forum will be automatically subscribed; If you are interested in any of the other forums, such as Upcoming Photo Opportunities and Meet & Shoot, you will need to specifically subscribe to those.



Photos © Charles Needle

LPS Board of Directors

ELECTED OFFICERS

PRESIDENT

— ARDETH CARLSON

VICE PRESIDENT

— RICH KREBS

TREASURER/MEMBERSHIP

— JEN LAMMEY

SECRETARY

JERRE JOHNSON

CHAIRPERSONS

PROGRAMS

—TIM KATHKA

—RICH KREBS

— RUTH SPRAIN

COMPETITION

— ROB HUFFSMITH

WEBMASTER

— MIKE TESKA

MENTOR

—MIKE WILCOX

PSA REPRESENTATIVE

LISA SCHNELZER

SCHOLARSHIPS

— RUTH SPRAIN

NEWSLETTER

—ARDETH CARLSON

FIELD TRIPS

—JIM ROODE

PUBLICITY

—KEVIN FETTIG

FORUM DIRECTOR

—INGRID JACOBSON

GREETING HOST

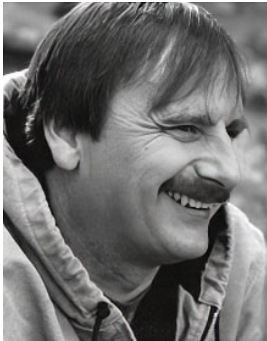
—BILL LUNDQUIST

The LPS Board holds its meetings in person at the Perkins restaurant on West Eisenhower in Loveland. The meetings are open to all members. If you are interested in seeing how your leadership team tends to club business, you are welcome to attend, although only Board members can vote. Information is on page 1 of the newsletter.

MEMBER PROFILE

Kevin Fettig

I got the photography bug in high school. I was born in North Dakota and grew up in the Bay Area of California. My exposure to Ansel Adams's work caught my eye. Most of his pictures were familiar to the sights I had seen growing up. I moved from California to Colorado in 1991.



I enjoyed photography and continued until I got married and had kids. I had to put the camera away and support my kids and family growing up. It wasn't until the kids all hit high school that I tried to dust off the camera and get my kids interested in photography as well. I was trying to find a common interest we could do together. I am still working on it. My kids do have the eye but just take really good snapshots of their families' lives.

At this point I was determined to get back into doing this hobby. I still was shooting film for a while. Even though I was shooting film, I was also getting a digital copy and using the computer for editing/printing. So why not fully transition into digital? I did that around 2012, and I have been doing so since.

I started with a used Canon 7D, gen 1. I still use that camera, but I have upgraded with a Canon 5D Mark IV. I have both and set them up with different lenses so I have quick-change options. It works pretty well, but you can say I do not travel light. I still have my trusty heavy tripod that I can't seem to part with. I do have a carbon fiber backpack-size tripod, but it is lighter and is not as steady in the winds we get up in the Rockies at times.

I have a wonderful wife who puts up with my addiction...I mean, hobby. I have 3 daughters, 6 grandchildren, and several pets. This includes horses, dogs, and a cat.

I work in agriculture as a senior field service technician for a company that supplies and services the DeLaval milking line and am kept pretty busy trying to keep time for everyone, work, play, and hobbies.

(Kevin is now serving as the new Publicity Chair and previously served as LPS president in 2020.)



Photos © Kevin Fettig

Larimer County Fair Photography Competition

Open Class Photography is a popular division of the Larimer County Fair and provides photographers with a wonderful venue to exhibit up to three images.

The 2024 county fair will be held from August 2 through 6 at The Ranch Events Complex, 5280 Arena Circle, in Loveland. Check-in of photography entries will be on Tuesday, July 30, between 4:00 and 7:00 PM.

The Larimer County Fair Book contains all the entry guidelines, classes, and descriptions. Access the 2024 fair book online at:

<https://www.treventscomplex.com/events/larimer-county-fair/4-h-and-open-class>.

Pre-registration entry is recommended through an online Fair Entry system until Tuesday, July 23, at 11:50 PM. Alternatively, written entry forms can be requested through the Competitions Coordinator, Laura Boldt, at 970-619-4023, boldtla@larimer.org. Printed entries can be emailed, hand delivered, or mailed to the Larimer County Fair Office, 5280 Arena Circle, Ste #100, Loveland, CO 80538. The Entry Office opens at 8:30 a.m. and closes at 4:30 p.m. Postmarks, faxes, or email pre-registration will be accepted only if posted on or before July 23rd at 4:30 PM. Registration and entry after July 23 will only be accepted at the in-person check-in on July 30.

There are specific rules regarding photo dimensions and mounting which must be followed in order to be accepted at check-in, so it is important to understand these rules before bringing photos to submit on check-in day.

The photos will be judged on July 31, with ribbons awarded for 1st, 2nd, and 3rd place and special awards for Champion and Reserve Champion in each competition division and Best of Show and Reserve Best of Show overall.

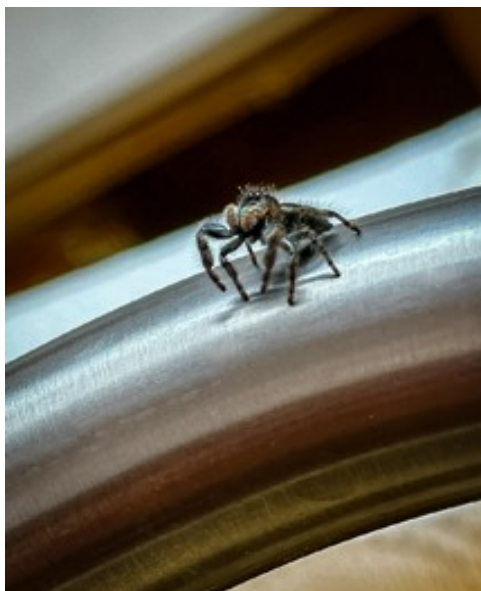
April Monthly Topic: Macro

ROBERT HUFFSMITH, COMPETITION CHAIR

Macro photography is photography that produces images of small items larger than life size. This is often also called close-up photography.

Macro photography sometimes employs a certain focal length lens such as 105mm. There is not much depth of field this close, sometimes just 1/16 of an inch or so. For this reason the image can be captured multiple times at different focus points, and then photo stacking is used in post processing to create an image in focus from near to far. Obviously shooting is best done with the camera on a tripod, with the subject completely still. Photographers who specialize in "true" macro photography also may use a sliding rail to photograph the subject at the changing focal points.

This process is not mandatory, though. Wonderful close-up images can also be taken even with telephoto lenses, and focus stacking is not necessarily required to achieve a nice sharp photo. Although there are complex technical descriptions of macro photography, for this monthly competition, close-up photos will be considered to fit the Macro theme.



Photos © Robert Huffsmith

2024 PSA Photo Festival Plans

The annual Photographic Society of America Photo Festival will be held in Tucson, Arizona, with photo tours beginning on September 15 and meetings and programs being held from the 18th through the 21st. The conference hotel is the Loews Ventana Canyon Resort, with special rates for PSA conference attendees and waiver of resort fees.

The week features daytime speakers, with presentations that will repeat each day. There will be a special model shoot workshop on Friday for a limited number of participants. The print gallery will open on Tuesday evening, which gives conference goers the opportunity to view award winning photographs from PSA competitions, interclub competitions, chapter and council showcases, and youth showcase.

The evening speakers will be Sam Abell on Wednesday night, speaking on *The Photographic Life*, and David Akoubian on Thursday night, *Nature Photography, Making Memories of our Journey*; and Vince Versace on Friday night, with details to come.

Early-bird registration for the conference runs from April 1 through April 30. Members of PSA pay a discounted conference fee. For more information and to stay updated with festival plans, go to: <https://psa-photo.org/page/photo-festival>

Photojournalism Dialogue Group

Several members of LPS have expressed an interest in joining a photojournalism study group. This would be a small group set up to share photos online. The facilitator, Ardeth Carlson, has completed an Advanced PJD course and will share information on what makes a strong photojournalism image, with members of the group contributing comments and critiques on each image. If you would like to register to join this group or just have questions, please email ardeth.carlson@gmail.com.

Competition Corner

Submitting Pictures for the Monthly Competition or Photo Review Session

- Log on to the LPS website
- Mouse over the **Competitions** dropdown on the Home Page.
- Select menu item:
Submit images to a Competition
- Select the Competition category or the Third Monday Photo Review
- At the bottom of the screen, click on **Upload images into the Competition.**
- Then click on the button **Select** which will open a window on your computer to select an image.
- Click on **Save Images and Proceed to Edit Page.**
- Type in a title and click on **Save any changes and return to original page.**
- You can replace any photo, up to the submission deadline, if desired.

The monthly competitions allow a single image per category. The photo review session allows up to three images.

April Competition

Competition Categories

Open Projected (included every month)

Monochrome (rotating category)

Monthly Topic: Macro

Submission Deadline

Before Midnight, Monday, April 1

Please keep the judging criteria in mind:

Impact and Viewer Interest—"Wow" factor is the nebulous quality where an image "pops." This subjective aspect of judging should not preempt the technical or composition aspects of an image.

Composition—Good composition is a pleasing arrangement of the elements in an image. There are many guidelines for good composition that judges may consider.

Technical Quality—This includes sharpness, focus, color, tonal scale, contrast, appropriate depth of field and other qualities. Consideration is also given for the effect the photographer was trying to achieve such as high key, multiple exposure, or selective focus.

Monthly Topics—The subject matter should be related in some manner to the topic. While there are no formal deductions or penalties, judges may reduce their overall score if they feel the image does not align with the monthly topic. With that said, creative interpretation is encouraged, except in categories with specific rules such as monochrome.

Open Projected—The image must begin as a photograph. From there, it is up to you. Any photograph may be entered in the Open Projected category.

April Competition Groups

Participation in a group is determined by the average of the member's 9 previous LPS competition scores. Here are the groups for the February competition:

Group 5—Jerry Baumann, Kevin Burkhart, Ingrid Jacobson, Dan O'Donnell, Ed Ogle, J.R. Schnelzer, Lisa Schnelzer, Jeff Stephenson

Group 4—Max Coopwood, Tim Hitchcock, Malcolm Patten, Laurie Paulik, Josemaria Quera, Bob Smith, Ruth Sprain, Mike Teska, Guy Wagner, Mike Wilcox

Group 3—Jenny Anderson, Ardeth Carlson, Kevin Clarke, Kevin Fettig, Kurt Flock, Rob Huffsmith, Jerre Johnson, Tim Kathka, Rich Krebs, Bob McDonnell, Octavio Noda, Alan Schuppan, Dave Van Riper

Group 2—Wayne Snodderly

All other members will compete in Group 1 until the member has 9 submitted images that reach an averaged score for a different group. An individual member's competition group might vary from month to month.

2024 Competition Topics

Specific assignments are to be determined on a month-by-month basis; these are the topics for the year listed in alphabetical order:

Autumn Splendor
Landscapes
Still Capture
Street Photography
The Color Orange
Transportation
Zigs & Zags

Interclub Photos Needed

The LPS reps for the PSA interclub competitions are still looking for member photos to submit for round 3. The PSA deadline is April 15, so the reps would like to have entries at least a few days before that. LPS members do not need to be individual members of PSA. LPS competes in the Nature, Photojournalism, Pictorial Print, and Travel Divisions. For more information see page 8 of the newsletter.

LPS March Best of Show

All competition photos and scores can be viewed on the LPS website under Competition Results. Check the box "Display All."



BOS Topic, Group 5
J.R. Schnelzer



BOS Topic, Group 4
Ruth Sprain

BOS Topic, Group 3
Octavio Noda



BOS Open, Group 5
J.R. Schnelzer



BOS Travel, Group 5
J.R. Schnelzer



BOS Open, Group 4
Dan O'Donnell



BOS Travel, Group 4
Ed Ogle



BOS Travel, Group 3
Tim Hitchcock



BOS Open, Group 3
Jerre Johnson



BOS Open, Group 2
Rich Krebs



BOS Travel, Group 2
Rich Krebs

LPS March Award of Merit



AOM Open, Group 5
Lisa Schnelzer



AOM Travel, Group 5
Tim Kathka



AOM Travel, Group 4
Ruth Sprain



AOM Open, Group 4
Ed Ogle



AOM Open, Group 3
Alan Schuppan



AOM Open, Group 2
Wayne Snodderly



AOM Topic, Group 5
Lisa Schnelzer



AOM Topic, Group 4
Dan O'Donnell



AOM Travel, Group 3
Kurt Flock



AOM Topic, Group 3
Rob Huffsmith



AOM Travel, Group 2
Wayne Snodderly

PSA Interclub Competitions

LPS is a member club of the Photographic Society of America and has been participating in three divisions of interclub competition: Nature, Print, and Travel. There are three rounds of competition per season, with deadlines on November 15, February 15, and April 15.

LPS members who are interested in having their photos considered for our club's submissions to a PSA interclub competition can contact the LPS rep for more details.

NATURE DIVISION:

Dan O'Donnell, LPS Rep
djod@me.com

Nature Division (ND) image guidelines can be found at <https://psa-photo.org/page/nature>. Dan is looking for images that illustrate an interesting behavior or a unique point of view, not just a landscape or wildlife that is in good focus! Storytelling is an important part of the image. Maximum image size is 1920x1080 pixels.

PHOTOJOURNALISM DIVISION:

Ardeth Carlson, LPS Rep
ardeth.carlson@gmail.com
Information about the Photojournalism Division (PJD) and guidelines for photojournalism images can be found at <https://psa-photo.org/page/photojournalism>. Ardeth is looking for photos that contain informative content and emotional impact, reflecting the human presence in our world. The image should tell a strong visual story. Maximum image size is 1920x1080 pixels.

PICTORIAL PRINT DIVISION:

Lisa Schnelzer, LPS Rep
western-exposure@hotmail.com

The five image categories in the Pictorial Print Division (PPD) are: Small Color, Large Color, Small Monochrome, Large Monochrome, and Creative Altered Reality. For further information regarding submissions, contact Lisa.

TRAVEL DIVISION:
Rich Krebs, LPS Rep
rkrebs318@gmail.com

A definition of a travel photo and a PDF of the Travel Division (PTD) guidelines can be found at <https://psa-photo.org/page/photo-travel>.

Rich would like images that show characteristic features of a place or a people. Image size should be a maximum of 1920x1080 pixels.

Colorado Chapter Meeting

The spring meeting of the Colorado Chapter of PSA will be held on Saturday, April 6, from 1-3 PM at Mike's Camera, 2500 Pearl Street, in Boulder. Daniel Foster will speak on the topic "On the Road Again: Insights From Along the Way." Daniel Forster is a photographer who specializes in fine art landscape and nature photography. He is based in Colorado Springs. Daniel's passion to create has led him down multiple creative journeys. Then a few years ago he picked up a digital camera and hasn't looked back. The merging of his passion to create and explore nature has become a perfect outlet for creating and sharing his passion with others. If you are a member of PSA and interested in joining the Colorado chapter, contact Deborah Milburn at ddmilburn3@gmail.com.

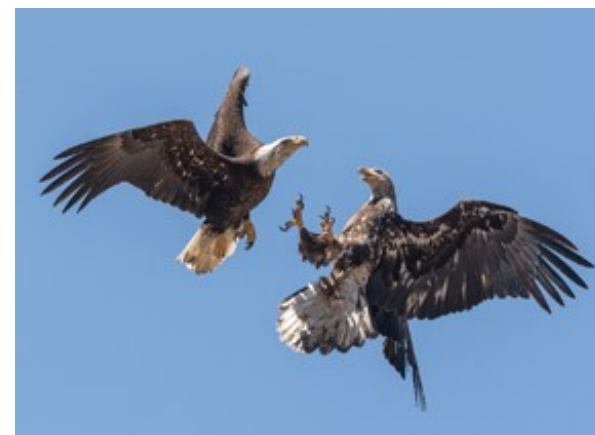


"Old Mill"
J.R. Schnelzer

PSA Interclub Results

Results are in for Round 2 of the PSA Travel Division and Nature Division interclub competitions. Congratulations to three of our members who received the Merit designation, the top award, for their photos:

J.R. Schnelzer, Travel—"Old Mill"
Dan O'Donnell, Nature—"Eagle Generational Dispute"
Guy Turenne, Nature—"Get Out of My Way"



"Eagle Generational Dispute"—O'Donnell



"Get Out of My Way"—Turenne

Congratulations to the 2024 LPS Youth Showcase Winners

Judging for the LPS Youth Showcase was held on March 23. J.R. Schnelzer, Lisa Schnelzer, and Ardeth Carlson served as judges. A total of 80 digital images and 70 prints were submitted from nine high schools in northern Colorado.

First through 4th-place winners were named in six categories for both digital and print photos. The winners receive ribbons, and 1st-place winners also receive a \$25 Jax gift card. Winning images are entered in the PSA Youth Showcase.

The winning images in the digital competition:

Architecture—Giada Milani, Mountain View HS

Color—Moriah Andersen, Mead HS

Monochrome—Delphi Davalos, Boulder HS

Photojournalism—Margo Feaster, Mead HS

Portrait—Amaya Guerrero, Poudre HS

Scape—Sophia Pereira, Boulder HS

Print winners will be published in the May InFocus newsletter issue.

The LPS Best Senior Award is given to Isobel DiPrima from Boulder High School. Isobel will receive a \$250 award from LPS for her outstanding photography. Congratulations to Isobel and all the LPS Youth Showcase winners!



“Grieving Aphrodite”—Moriah Andersen



“Better in the Dark”—Delphi Davalos



“Reflection Before the Storm”—Sophia Pereira



“Veteran”—Amaya Guerrero



“Sideline Pride”—Margo Feaster



“Dinner in Town”—Giada Milani

Saturday Photo Chat

The Saturday Photo Chat, formerly known as the "Bull Session," is an informal get-together of photographers to talk about places to photograph, gear, photo software, and almost anything about photography. This has been an ongoing activity for many years, headed by long-time LPS member Bill Standerfer. The meetings are on the second Saturday of the month at 8:30 AM at Panera on east Highway 34 in Loveland. If you have any questions, contact Bill at billstanderfer@outlook.com.

Third Monday Photo Review

An excellent way to get feedback on your photos and for experienced photographers to share their knowledge is to participate in the Monday Photo Review sessions via Zoom on the third Monday of each month. Participants are allowed to submit three photos no later than noon of the session day. The review is mentored by Mike Wilcox, who welcomes and encourages comments and suggestions by all participants. Many members have reported that they have received a greater knowledge of photo techniques and also found it helpful to see their photos in the eyes of other photographers. Because judges of the monthly competition most often do not have time to offer critiques on all of the competition photos, the Third Monday Review provides that helpful aspect of improving our craft. Click on the link on page 1 of the newsletter to join the Zoom meeting.

Newsletter Index

To find articles in previous issues of the LPS InFocus newsletter, go to the Newsletter Index on the website. The titles of the articles are displayed in alphabetical order. To find a specific article, the index shows the year and month of the issue of the newsletter and page number on which the article appears. In order to look at the article, you then need to go back to Newsletters and select the issue you want.

LPS Membership

Although LPS welcomes guests to our monthly club meetings, there are benefits to joining as a member. If you like to see how your images fare in competition, you can submit up to 3 photos each month in our club competitions; you also have the opportunity to have an image submitted in the PSA interclub competitions.

If you hate competitions (!), the club is also a great place to meet other photographers, get critiques and comments at the Third Monday Review sessions, find photo-op events and activities, and watch the recordings of meeting presentations. You might enjoy initiating meet&shoots or participating in field trips. You can also meet up with LPS members at the monthly Saturday morning Photo Chats.

Your membership dues also fund our annual Youth Showcase, which encourages photographers from our northern Colorado high schools to pursue the art of photography and provides them with an opportunity to have their images displayed with national/international exposure at the annual PSA Photo Festival.

If you have questions or want to volunteer for any of our various committees and activities, you can use the members-only Facebook group or email ardeth.carlson@gmail.com.

JOIN THE CLUB

If you are reading this newsletter as a non-member and would like to join the Loveland Photographic Society, go to the main page on the www.lps.cc website and click on **Membership > Join or Renew**. Annual dues are \$45.

LPS InFocus

The e-Newsletter for the
Loveland Photographic Society

Mailing Address

P. O. Box 7604 • Loveland, CO 80537

Public Facebook Page

[https://www.facebook.com/
LovelandPhotographicSociety/](https://www.facebook.com/LovelandPhotographicSociety/)

Members Only Facebook Group

[https://www.facebook.com/
groups/237033251716/](https://www.facebook.com/groups/237033251716/)

Invitation to Submit an Article

The newsletter editor is always looking for material that would be of interest to our members for future issues of InFocus. There are many subjects for which you can share your expertise or experiences, such as post-processing techniques, camera equipment, and great locations to shoot.

If you aren't confident in your writing ability, the editor will help polish your article for publication. Contributions by LPS members will help this newsletter be relevant and of value to our readers. Send your ideas or articles to ardeth.carlson@gmail.com.



Our Facebook group **Members of Loveland Photographic Society** was established not only to provide information on club meetings and events but also as a place to share your photos and initiate conversation about photography topics that interest you. You must be a current member to join the group.