

# LPS Resizing Digital Images for Competition 2008

## How to Prep Images For Digital Projection

Revised 06/15/08

**Image editing:** The following process and screen shots are from PhotoShop CS. Note: This process can be accomplished in most imaging editing software. The purpose of these instructions is to properly size your image(s) for projection in digital competition.

**Size Requirements:** To obtain best results for competition, images will be sized to a maximum of 1024 pixels wide x 768 pixels high as follows:

- Open the picture to be resized. (Note: Make sure the image is at least 1024 pixels wide x 768 pixels high so you aren't upscaling the image.)
- Save the image with the title only, or by the LPS naming convention if you need to submit by email. Select Save As> (Note: This will prevent you from losing your original image. You will be working with a copy.) Example: MyImageTitle.jpg for submission to the online form, or for submission by email: D\_A\_E\_ImageTitle\_YourName.jpg (for complete instructions see LPS Competition Rules and Guidelines 2008) Be sure to save the image as a jpg. Other formats may not read for projection.
- Make sure you are working on the image you have just renamed, not the original. If you are unsure, close the image and reopen it selecting the image where it was saved.
- For best projection convert the image to sRGB. In CS go to Image>Mode>Convert to Profile. In CS2 go to Edit>Convert to Profile. (Why: The projector does not project the full range of colors that you see on your monitor in RGB mode. By converting to sRGB you are able to view the image as it will be projected. At this time you may want to make adjustments for brightness/contrast, saturation and color before resizing. Select settings as shown in Fig. 1. Click OK.

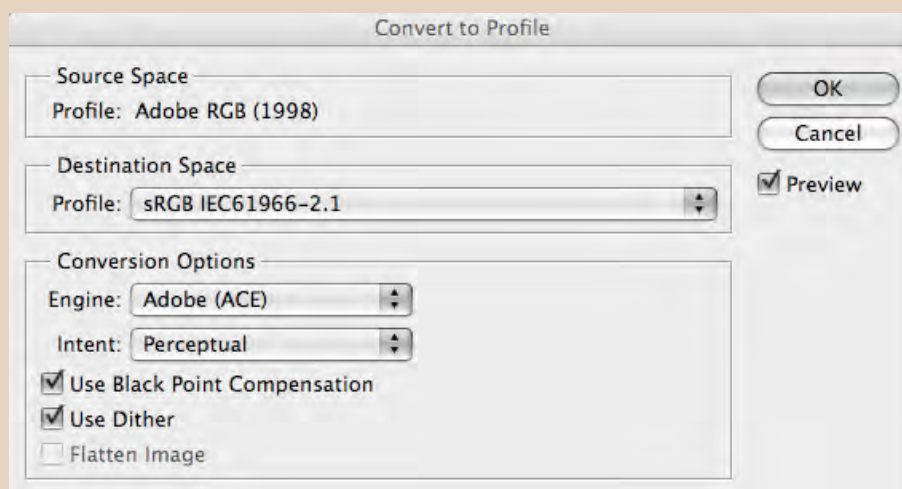


Figure 1

(continued on next page)

- e. Next go to Image Menu>Image Size> and click. See Figure 2 (Note: The numbers you see will be the size of your image.)

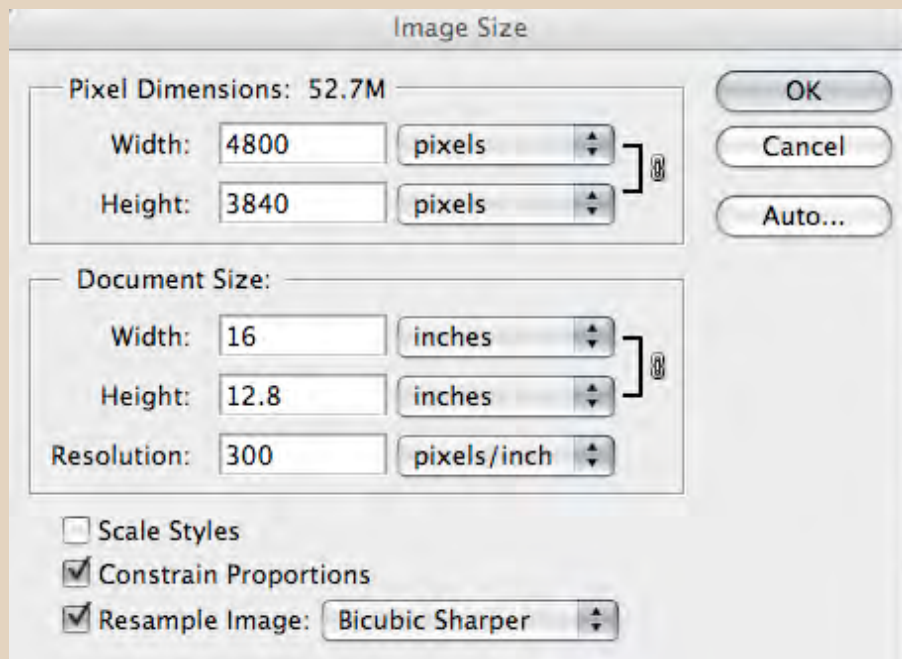


Figure 2

- f. Make sure Constrain Proportions is checked.  
g. Under Resample Image, select Bicubic Sharper for best reduction. See figure 3 below.  
h. In Document Size, first set the Resolution to 72 pixels/inch (Note: Resolution will not alter the projection size of the image. It only alters the space between the dots for printing and thus the width and height of the image when printed. Monitors display at a resolution of 72 or 96 pixels/inch.  
i. In Pixel Dimensions, set width to 1024 or the height to 768. Depending on aspect ratio, set your image so as not to exceed either dimension. (Example: Square image would be 768x768.) Click OK.

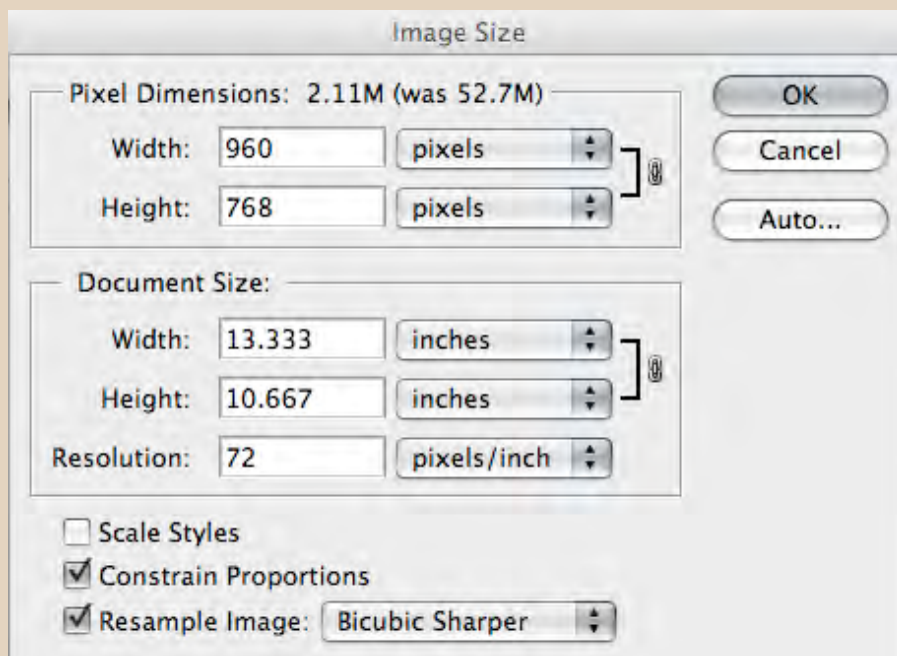


Figure 3

(continued on next page)

- j. Since you have already named your image all you will have to do is save. Go to Save As and select your desktop or a convenient place to drag and drop or browse for your image when you add it to the online form. Click Save. See Figure 4. Note the image size. Do not exceed 1MB. (1000k) (Note: If you have followed these instructions your image should be smaller than 1MB. If you submit a larger image, please note that the computer will resample the image for projection and you may not like the results. If you submit a larger image you may have to adjust the quality to keep it smaller than 1MB.

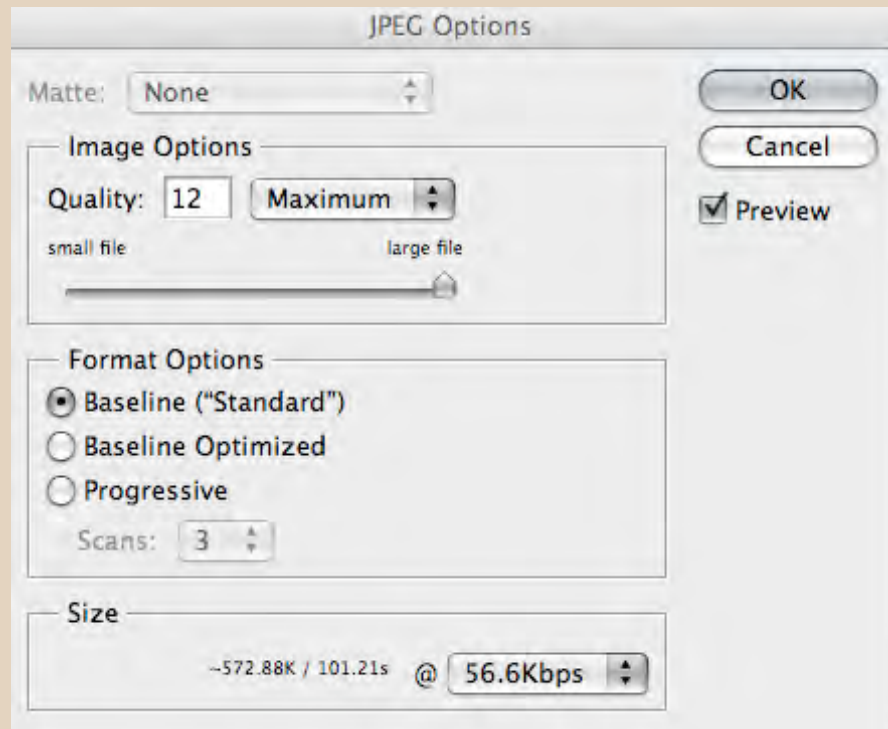


Figure 4