

# LPS InFocus

Loveland Photographic Society  
Monthly Newsletter

August 2023

Loveland  
Photographic  
Society

## Club Meetings

Club meetings are hybrid in-person plus Zoom; the Photo Review Session is online only.

**Saturday, August 12**

### Photo Bull Session

Loveland Panera Bread  
1550 Fall River Drive, Loveland  
8:30–10:30 AM

**Monday, August 14**

### Monthly Club Meeting

Trinity United Methodist Church  
801 Cleveland Avenue  
Social time 6:00 PM  
Meeting 6:30–8:30 PM  
<https://zoom.us/j/93226580276>  
Pass Code: 049611

**Monday, August 21**

### Photo Review Session

6:30–8:30 PM  
<https://zoom.us/j/95087721084>  
Pass Code: 961019

**Tuesday, September 5**

### LPS Board Meeting

Perkins Restaurant  
2222 W. Eisenhower, Loveland  
6:30 PM  
*Open to All*

Please mute your microphone during online meetings except when you are speaking, to avoid background noises.

## Keeping It Fresh

### Presentation by Colleen Miniuk

Our presenter for the August meeting is a repeat speaker, Colleen Miniuk, a corporate-America escapee turned full-time freelance outdoor photographer, writer, publisher, instructor, and motivational speaker, supporting a wide range of assignments for editorial and commercial clients.

Initially as an outlet to corporate life, she began making photographs of the Western landscapes in late 2001 during her Introduction to Photography class at the Chandler-Gilbert Community College. Two years later, she started selling her photographs at art shows across Arizona. In 2006, she had her first photograph published in a magazine. Then, in February 2007, she left the grey cubicle walls of corporate America to pursue a full-time career in photography and writing.

In celebration of the Colorado River watershed—and in hopes of encouraging all viewers to consider their own relationship with the Colorado River and other water sources where they live—16 of her photographs are featured in a solo photography exhibition, "The Current Flows: Water in the Arid West." The show was curated by Jeanne Falk Adams (Ansel Adams' daughter-in-law).

She is just as excited to help others learn photography as she is making her own images, so she has proudly led photography workshops for her own company, CMS Photography, as well as many other organizations like the *Arizona Highways* Photography Workshops, Moab Photography Symposium, The Nature Conservancy, Arizona Wildlife Federation's "Becoming an Outdoor Woman," Through Each Others' Eyes, and for numerous private clients. In 2017, she started Sheography, all-women photography workshops.

Specializing in nature and outdoor recreation, her purpose as an outdoor communicator is to inspire and help others enjoy the Great Outdoors. She currently resides in Chandler, Arizona, and will be coming to us via Zoom with her presentation, "Keeping It Fresh."



## LPS Board of Directors ELECTED OFFICERS

**PRESIDENT**

— ARDETH CARLSON

**VICE PRESIDENT**

— RICH KREBS

**TREASURER/MEMBERSHIP**

— TIM HITCHCOCK

**SECRETARY**

JERRE JOHNSON

## CHAIRPERSONS

**PROGRAMS**

—TIM KATHKA

—RICH KREBS

— RUTH SPRAIN

**COMPETITION**

— JEFF STEPHENSON

**WEBMASTER**

— MIKE TESKA

**MENTOR**

—MIKE WILCOX

**PSA REPRESENTATIVE**

LISA SCHNELZER

**SCHOLARSHIPS**

— RUTH SPRAIN

**NEWSLETTER**

— ARDETH CARLSON

**FORUM DIRECTOR**

—INGRID JACOBSON

**GREETING HOST**

—JERRE JOHNSON

## LPS InFocus

The e-Newsletter for the  
Loveland Photographic Society

### Mailing Address

P. O. Box 7604 • Loveland, CO 80537

### Public Facebook Page

[https://www.facebook.com/  
LovelandPhotographicSociety/](https://www.facebook.com/LovelandPhotographicSociety/)

### Members Only Facebook Group

[https://www.facebook.com/  
groups/237033251716/](https://www.facebook.com/groups/237033251716/)

### Submitting Pictures for the Monthly Competition or Photo Review Session

- Log on to the LPS website
- Mouse over the **Competitions** dropdown on the Home Page.
- Select menu item:  
**Submit images to a Competition**
- Select the Competition category or the Third Monday Photo Review
- At the bottom of the screen, click on **Upload images into the Competition.**
- Then click on the button **Select** which will open a window on your computer to select an image.
- Click on **Save Images and Proceed to Edit Page.**
- Type in a title and click on **Save any changes and return to original page.**
- You can replace any photo, up to the submission deadline, if desired.

The monthly competitions allow a single image per category. The photo review session allows up to three images.

## Travel Photo Definition

Because one source for the LPS rep for PSA's Travel Division Interclub Competition is our club's entries from the monthly competitions, we use the PSA rules for submission to our travel competition. To avoid having your image disqualified, please be sure to read the following details.

### Content guidance:

- If the image is predominantly or exclusively a land-, sea- or cityscape, these "scapes" must include characteristic, distinctive and recognizable physical features, although it is not necessary that the image identify the exact location;
- Images that predominantly or exclusively depict people and their activities must illustrate a distinctive culture of a country, region, or continent;
- Images that predominately or exclusively depict animal populations are allowed, if the animals are in their native environment and are characteristic of that country, region, or continent;
- Portraits or other close-ups of people or objects, in addition to meeting the above paragraphs as applicable, must include elements depicting some of the surrounding environment to make it obvious that the image was not taken in a studio setting;
- Images from events or activities arranged for photography, or of subjects directed or hired for photography, are **NOT** allowed.
- Time exposures are allowed, if they do not dominate the image as a special effect (star trails, for example, are a dominating effect).
- Highly distorted images such as those produced by fish eye lenses are **NOT** allowed.

### Editing guidance:

Processing or editing must be limited to making the image look as close to the original scene as possible, except that conversion to grayscale monochrome is allowed.

## Allowed editing techniques:

- Cropping, straightening and perspective correction.
- Removal or correction of elements added by the camera or lens, such as dust spots, noise, chromatic aberration and lens distortion.
- Global and selective adjustments such as brightness, hue, saturation and contrast to restore the appearance of the original scene.
- Complete conversion of color images to grayscale monochrome.
- Blending of multiple images of the same subject and combining them in camera or with software (exposure blending or focus stacking);
- Image stitching – combining multiple images with overlapping fields of view that are taken consecutively (panoramas)

## Editing techniques that are not allowed:

- Removing, adding to, moving or changing any part of an image, except for cropping and straightening.
- Adding a vignette during processing.
- Blurring parts of the image during processing to hide elements in the original scene.
- Darkening parts of the image during processing to hide elements in the original scene.
- All conversions other than to complete grayscale monochrome.
- Conversion of parts of an image to monochrome, or partial toning, desaturation or over-saturation of color.

## SERVICE

### Find Your Way to Serve

In addition to the four elective offices, there are a number of appointive positions we would like to fill for the 2024 year.

One of the most important responsibilities that would benefit our club is a technology chair or committee. Mike Teska is the webmaster and has helped set up the Zoom meetings when he is not out of town, but that is not really his job, which is to manage the LPS website. Most of you are aware that we have run into a number of difficulties with providing online attendees with a beneficial experience (understatement!), especially since we have such a variety of methods of presentation and some issues with Zoom or with becoming familiar with the setup at our new venue.

We would also like to have a member take over as greeting host, welcoming attendees at our monthly meetings and maintaining the member name tags; Jerre, who is our secretary, would be happy to turn this extra job over at any time.

If anyone is willing to serve in any of these capacities or is interested in knowing more about what would be involved, please contact a member of the leadership team listed on page 1 of the newsletter.

### New Members

A warm welcome to these new members:  
Elizabeth (Liza) Hess  
Jennifer Martin

### Officer Elections

Election of president, vice president, treasurer/ membership chair, and secretary for the 2024 year will take place at the November 2023 meeting. Members who have agreed to stand for election are Ardeth Carlson, president; Rich Krebs, vice president; Jen Lammey, treasurer/membership chair; and Jerre Johnson, secretary.

Per the bylaws, nominations may also be made from the floor at the November meeting; nominees must accept the nomination either in writing before the meeting or verbally at the meeting. If there is more than one candidate for a given position, a written ballot will be required. If there is only one candidate per office, the slate can be approved in total by a voice vote, unless there is objection.

If there are other members who want to run for office, please notify the current secretary, Jerre Johnson. Contact members of the board with any questions about the duties of these positions.

### Christmas Already?

In the past LPS had some bodacious Christmas parties that included food, live judging, and a silent auction of donated items that provided additional funds for the LPS coffers to help with our operational expenses. Now that we have a venue that has room for this event, this is the time to begin making plans.

Because the president does not intend to organize this by herself, a planning committee is needed. If no interest is shown in making this a special time, the December meeting will just be a regular meeting with a few snacks, as we had last year.

To volunteer to serve on a committee, contact Ardeth at [ardeth.carlson@gmail.com](mailto:ardeth.carlson@gmail.com). Share your organizational skills and creative ideas to create a great December celebration!

### Larimer County Fair 2023

Judging of the Open Class Photography entries at the Larimer County Fair will be held on Wednesday morning, August 2. Teams of two LPS members will be serving as judges for each of the three competition divisions of Children/ Youth/Upper Teens, Amateur, and Advanced Amateur. Ardeth Carlson, the Open Class Photography superintendent, is still needing two or three more volunteers to assist with laying out the photographs and other miscellaneous tasks.

The judges and volunteers will be meeting at 8:30 in the South Exhibition Hall of the First National Bank Building at the Ranch Events Complex, 5280 Arena Circle, and be prepared to begin the judging between 8:45 and 9:00 a.m. If you are available to help, please contact Ardeth directly by email at [ardeth.carlson@gmail.com](mailto:ardeth.carlson@gmail.com) or call or text her at 970-290-9550.

Members can also volunteer time to staff the LPS table during the fair. You don't have to sign up for a time slot; if you have some available time and perhaps are visiting the fair anyway, just hang out for a bit at our table, which will have our brochures and a poster, and simply be available to answer any questions about the your experience with the club. This will be in the Open Class Photography area in the South Exhibition Hall.

The usual judges' payment by the county fair organizers is going to the Loveland Photographic Society, so this is a great benefit to our club finances in addition to promoting LPS in the northern Colorado photographic community.

## Dealing With Dust Spots

By JERRY BAUMANN

I live in Durango and participate in meetings only by Zoom. I missed the competition part of the meeting because of the Zoom challenges, but I checked out the images on the LPS web page, along with the reviewer comments.

I loved the image “Driftwood in Paradise” in the open category. The judge mentioned in his review comment some dark circles in the lower right part of the blue sky and noted, “Several spots in the sky on the right—looks like brush artifacts?” The photo has a problem I discovered that looks identical to one with which I struggled two years ago, the dark circles that are classic of dust specks, most of which are invisible to the naked eye.

For more than 15 years, I’ve had a number of Canon DSLR bodies, all with a high-frequency dust shake-off system. I’m paranoid about keeping my equipment clean and dust free. Moreover, whenever I changed lenses, the mirror sealed the sensor against dust as I changed lenses. On five different Canon DSLR bodies, I changed lenses countless times, between an ultra wide, a medium, and a 100-400 tele zoom and never experienced a dust spot. My first Canon DSLR didn’t have the cleaning system, and I had to ship it back to Canon once to clean the sensor. But that ended with the five later models.

Then a couple years ago I got a small mirrorless Nikon Z system. (I’m too old to lug my 16 lb. photo backpack with the Canon system when I hike!) The new Nikon doesn’t have a cover over the sensor. On my first trip with it on hikes, I changed lenses as freely as with the Canon, and disaster struck—dust spots all over! Frustration and anger! I quit using the Nikon system for the rest of the trip and switched completely to my Canon DSLR system I had also brought along.

When I returned to Durango, I talked to some of my friends with both types of camera bodies, DSLR and EVF. They universally have to clean sensors on the EVF bodies. So I called B&H in New York and got a Movo sensor cleaning system. I have since cleaned the Nikon sensor a number of times.

After a shoot, in processing your images, you can view the image at 100% or 200%, and my first step in Adobe Photoshop CC is to pull up the healing brush and fix the spots in the smooth areas (e.g., sky or other solid areas). If you have the recent version of Photoshop or Lightroom, you can also use the new remove tool in the more complicated areas of the photo.

Also, anyone with an EVF camera body can easily check the entire sensor for dirt specks. You simply aim your camera up at a cloudless sky, manually focus the lens at the closest focus distance, then choose f-stops and ISOs that somewhat overexpose the sky. Take a shot, bring it into Photoshop, and crank the contrast up while driving the sky to somewhat brighter than optimum luminance. You’ll see every speck of dust—glaring! And in the future, NEVER change lenses with an EVF camera in any dusty environment or in any wind. I generally do it in the car, windows closed, and A/C and heat off.

I certainly don’t intend to sound like a “know it all” pain in the arse. However, I think this type of information should be more commonly discussed. That would have made a big difference in my first major photo venture with my EVF Nikon shooting Glacier, Yellowstone, and the Tetons.

## July Recording Fail

By ARDETH CARLSON

Unfortunately, due to whatever happened with our Zoom system, there is no recording of J.R. Schnelzer’s presentation at the July meeting.

We think this might have happened because webmaster Mike Teska tells me it appears that scheduled meetings have an end date, and that our scheduled second-Monday meetings had expired, unbeknownst to any of us. When I logged into the Zoom meeting, I realized I was logged into the third Monday review scheduled meeting, which has a different ID and passcode, and I didn’t know whether to try to set up a new meeting that night and what the ramifications might be to members trying to watch online. So I just joined the regular meeting using our usual ID and password, but that meant I was only a participant and not actually the host. In fact, no one was the host! So that might be what affected all the things we tried to correct the situation that night.

I will continue to seek to establish a Technology Committee with several people on board so that hopefully at least one tech person can be at each meeting, but until then, we are kind of limping along when there are problems with the Zoom connections!

---

*If you have comments to share or would like to expand on any articles in InFocus, email the newsletter editor.*



# Competition Corner

## August Competition

Open Projected (included every month)

Travel

Topic: Macro

## Submission Deadline

Before Midnight, Monday, August 7

## Please keep the judging criteria in mind:

**Impact and Viewer Interest**—"Wow" factor is the nebulous quality where an image "pops." This subjective aspect of judging should not preempt the technical or composition aspects of an image.

**Composition**—Good composition is a pleasing arrangement of the elements in an image. There are many guidelines for good composition that judges may consider.

**Technical Quality**—This includes sharpness, focus, color, tonal scale, contrast, appropriate depth of field and other qualities. Consideration is also given for the effect the photographer was trying to achieve such as high key, multiple exposure, or selective focus.

**Monthly Topics**—The subject matter should be related in some manner to the topic. While there are no formal deductions or penalties, judges may reduce their overall score if they feel the image does not align with the monthly topic. With that said, creative interpretation is encouraged.

**Open Projected**—The image must begin as a photograph. From there, it is up to you. Any photograph may be entered in the Open Projected category.

## August Competition Groups

Participation in a group is determined by the average of the member's 9 previous LPS competition scores. The groups for the August competition:

Group 5—Gerald Baumann, Kevin Burkhart, Darryl Hodson, Ingrid Jacobson, Tim Kathka, Ed Ogle, Laurie Paulik, J.R. Schnelzer, Lisa Schnelzer, Ruth Sprain, Jeff Stephenson, Michael Wilcox

Group 4—Ardeth Carlson, Max Coopwood, Kurt Flock, Tim Hitchcock, Robert Huffsmith, Jerre Johnson, Octavio Noda, Dan O'Donnell, Bob Smith, Michael Teska, Dave Van Riper

Group 3—Jenny Anderson, Kevin Fettig, Marvin Froistad, Rich Krebs, Bob McDonnell, Amanda Morris, Josemaria Quera, Michel Rothschild, Wayne Snodderly

Group 2—None at this time

All other members will compete in Group 1 until the member has 9 submitted images that reach an averaged score for a different group. An individual member's competition group might vary from month to month.

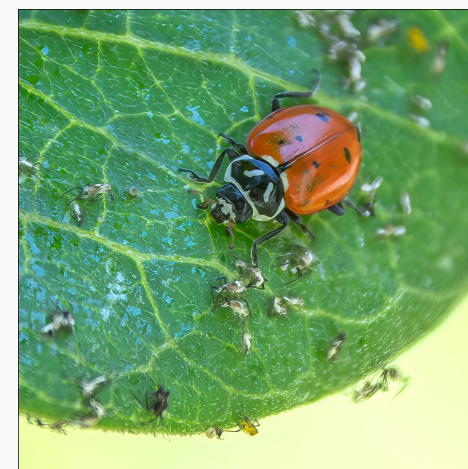
## Competition Chair Update

Robert Huffsmith has indicated he is willing to take on the responsibilities of competition chair. The current chair, Jeff Stephenson, will be working with Rob to familiarize him with the competition system, and Rob will assume office in January.

## Macro Monthly Topic

There are a number of descriptions and explanations about macro photography. A definition from Adobe: "Macro photography is all about showcasing a subject larger than it is in real life—an extreme close-up of something small. A full-frame insect in a 5x7 photo and a 4-inch product shot of a cornflake go well above life-size: both are examples of macro photography. (And while this premise would apply to photos taken through a microscope, that goes beyond the realm of macro into photomicrography....)."

Although the technical interpretation of macro involves ratios of subject to sensor size (1:1 or 1:2), this is probably more technical than many of us can wrap our heads around, so I think the Adobe explanation is most likely what the judges will be looking for. In other words, although perhaps not meeting the strict definition of macro, your image should be an extreme closeup that fills the frame, but it doesn't need to be magnified to microscopic size. Here is an example in which the leaf, ladybug, and aphids appear larger than life size, although the subject in your submitted photo doesn't have to be an insect!



## PSA Interclub Competitions

LPS is a member club of the Photographic Society of America and has been participating in three divisions of interclub competition: Nature, Print, and Travel. There are three rounds of competition per season, with deadlines on November 15, February 15, and April 15.

LPS members who are interested in having their photos considered for our club's submissions to a PSA interclub competition can contact the LPS rep for more details. Photos are now being collected by the reps for the November round.

### **NATURE DIVISION:**

**Dan O'Donnell, LPS Rep**  
[djod@me.com](mailto:djod@me.com)

Nature Division (ND) image guidelines can be found at <https://psa-photo.org/page/nature>. Dan is looking for images that illustrate an interesting behavior or a unique point of view, not just a landscape or wildlife that is in good focus! Storytelling is an important part of the image. Maximum image size 1400 x 1050 pixels.

### **PICTORIAL PRINT DIVISION:**

**Lisa Schnelzer, LPS Rep**  
[lisaschnelzer@gmail.com](mailto:lisaschnelzer@gmail.com)

Description of the five image categories in the Pictorial Print Division (PPD) can be found on the PSA website: <https://psa-photo.org/page/pictorial-print>. For further information regarding the size of prints, etc., contact Lisa.

### **TRAVEL DIVISION:**

**Rich Krebs, LPS Rep**  
[rkrebs318@gmail.com](mailto:rkrebs318@gmail.com)

A definition of a travel photo and a PDF of the Travel Division (PTD) guidelines can be found at <https://psa-photo.org/page/photo-travel>. Rich wants images that show characteristic features of a place or a people. Image size should be a maximum of 1400x1050 pixels.

## PSA Photo Festival 2023

The 2023 PSA Photo Festival will be held in Williamsburg, Virginia, September 27–30. Photo tour opportunities are scheduled from the 25th through the 27th. The evening speakers are Dan Burkholder, Ian Plant, and Frans Lanting, and the daytime lineup includes presentations on drone photography, iPhone photography, solving problems in photography, black and white morning photography, location and settings for wildlife photography, and the intriguing topic of “Youth and Adolescence of Image Enhancement.”

The conference hotel is the Hilton Double Tree, with a special group rate of \$144.00 per night, good 3 days prior and 3 days after festival dates of September 27-30, using the specific registration link on the PSA website. Online registration closes on August 15, with on-site registration opening on September 25. For complete information see <https://psa-photo.org/page/photo-festival>

## Reasons to Join PSA

An individual membership in the Photographic Society of America is an excellent bargain for photographers seeking to improve their photography skills. PSA offers free online photography courses, study groups, mentorships, and the opportunity to compete individually in the PSA divisions of Nature, Travel, Pictorial Print, Projected Image, Photojournalism, and 3D. In addition, the monthly PSA Journal is available online for download. Educational webinars on a variety of subjects can be viewed at any time.

A new Colorado chapter of PSA has now been established and recently held an inaugural meeting at the gallery of Scott Wilson in Denver. Most chapters meet several times during the year, and the meetings may be a few hours or day-long, with a presenter, workshops, seminars, or photography outings. Chapter membership is available for those who are individual members of PSA.

## Interested in Photojournalism?

One of the divisions of interclub competition in PSA is photojournalism. This is a “reality” division in which edits are restricted to those that make the image look as close to the original scene as possible, except that conversion to grayscale monochrome is allowed. Photojournalism images reflect the various sides of humanity and includes history-in-the-making journalism-type documentation as well as human interest “capture-the-moment” type photographs and street photography.

If there are not enough LPS members who are members of PSA and have an interest in this genre of photography that we can participate in the PSA interclub competition, this could be a special interest group within LPS, with meetups to practice photojournalism photography.

If this sounds like something you would like to pursue, contact Ardeth Carlson at [ardeth.calson@gmail.com](mailto:ardeth.calson@gmail.com).

### **2023 LPS Competition Categories**

#### **September**

Monochrome  
Topic: Historical

#### **October**

Nature—Wildlife  
Topic: Night Sky

#### **November**

Travel  
Monthly Topic: Transportation

## LPS July Best of Show

All competition photos and scores can be viewed on the LPS website under Competition Results. Check the box "Display All."



BOS Open, Group 4  
Mike Teska



BOS Open, Group 3  
Kevin Fettig



BOS Open, Group 5  
Ed Ogle



BOS Topic, Group 5  
Gerald Baumann



BOS Topic, Group 4  
Mike Teska



BOS Topic, Group 3  
Tim Hitchcock



BOS Nature, Group 5  
Kevin Burkhart



BOS Nature, Group 4  
Dan O'Donnell



BOS Nature, Group 3  
Jenny Anderson



## LPS July Award of Merit



AOM Open, Group 5  
J.R. Schnelzer



AOM Nature, Group 5  
Gerald Baumann



AOM Nature, Group 5  
Ed Ogle



AOM Topic, Group 5  
Mike Wilcox



AOM Open, Group 5  
Robert Huffsmith



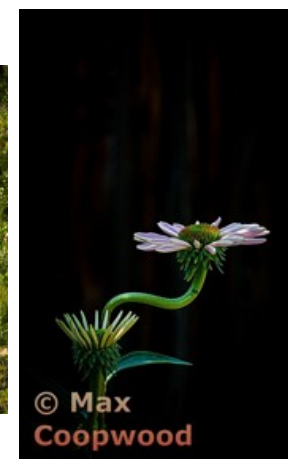
AOM Open, Group 4  
Max Coopwood



AOM Nature, Group 4  
Laurie Paulik



AOM Nature, Group 3  
Kevin Fettig



AOM Topic, Group 4  
Max Coopwood



AOM Open, Group 3  
Bob McDonnell



AOM Open, Group 3  
Tim Hitchcock

AOM Topic, Group 3  
Kevin Fettig





## Photo Editing Programs

**Smart Photo Editor**—This is a purchased product from Anthropics.com with numerous editing tools and hundreds of pages of special effects you can add to your uploaded photo. This can be installed as an external editor to Photoshop and Lightroom, in the same way as the Topaz and NIK filters.

**Lunapic**—It's a fun free online photo editor that includes editing tools and a plethora of filters and art effects, including sketching, painting, and animation.

**Tuxpi.com**—Add free interesting effects to your photo, such as kaleidoscopes, swirls, specialty borders, and re-toning.

**BeFunky**—The free version of this app, available for Apple and Android phones plus desktop download, provides a lot of features that allow you to download your edited images without a watermark; a subscription price of \$60 per year gives access to all of the features, or pay month-to-month and unsubscribe at any time. In addition to really cool art effects, which are very fun to play with, there are quite extensive editing tools that are intuitive and easy to use, along with popup explanations of how to use the tool for novice image editors.

### LPS Board Meetings Open to All Members

The LPS board holds its meetings in person at the Perkins restaurant on West Eisenhower in Loveland. The meetings are open to all members. If you are interested in seeing how your leadership team tends to club business, you are welcome to attend. Information is on page 1 of the newsletter.

## LPS Membership

Although LPS welcomes guests to our monthly club meetings, there are benefits to joining as a member. If you like to see how your images fare in competition, you can submit up to 3 photos each month in our club competitions; you also have the opportunity to have an image submitted in the PSA interclub competitions. If you hate competitions (!), the club is also a great place to meet other photographers, get critiques and comments at the Third Monday Review sessions, find photo-op events and activities, and watch the recordings of meeting presentations. You might enjoy organizing and leading field trips or participating in them. You can also meet up with LPS members at the monthly Saturday morning Bull Sessions.

Your membership dues also fund our annual Youth Showcase, which encourages photographers from our northern Colorado high schools to pursue the art of photography and provides them with an opportunity to have their images displayed with national/international exposure at the annual PSA Photo Festival.

The leadership team listed on page 1 of the newsletter is always open to hearing your ideas for ways to keep LPS vital and energized. You can also email the InFocus editor at [ardeth.carlson@gmail.com](mailto:ardeth.carlson@gmail.com).

## LPS Speaker Recordings

As a reminder, LPS meeting presentations have been recorded and posted ever since the start of COVID and are available to view at any time. You can find links to the videos on the LPS website; when you **login**, go to **Membership>Resource Links>Videos**. Most of our speakers have graciously allowed us to record their presentations as long as they were made available to LPS members only. Please *do not share* these links with non-members unless they are marked as shareable in the list.

## Member Submissions Request

### Invitation to Submit an Article

The newsletter editor is always looking for material that would be of interest to our members for future issues of InFocus. There are many subjects for which you can share your expertise or experiences, such as post-processing techniques, camera equipment, and great locations to shoot.

If you aren't confident in your writing ability, the editor will help polish your article for publication. Contributions by LPS members will help this newsletter be relevant and of value to our readers. Send your ideas or articles to [ardeth.carlson@gmail.com](mailto:ardeth.carlson@gmail.com).



Share your photos and keep in touch with LPS when you join our Facebook group **Members of Loveland Photographic Society**. You must be a current member to join the group.

### JOIN THE CLUB

If you are reading this newsletter as a non-member and would like to join the Loveland Photographic Society, go to the main page on the [www.lps.cc](http://www.lps.cc) website and click on **Membership > Join or Renew**. Annual dues are \$45.