

# LPS InFocus

Loveland Photographic Society  
Monthly Newsletter

May 2023

Loveland  
Photographic  
Society

## Club Meetings

Club meetings are hybrid in-person plus Zoom; the Photo Review Session will be online only.

**Tuesday, May 2**

### LPS Board Meeting

Perkins Restaurant  
2222 W. Eisenhower, Loveland  
6:30 PM  
*Open to All*

**Monday, May 8**

### Monthly Club Meeting

Trinity United Methodist Church  
801 Cleveland Avenue  
Social time 6:00 PM  
Meeting 6:30–8:30 PM  
<https://zoom.us/j/93226580276>  
Pass Code: 049611

**Saturday, May 13**

### Photo Bull Session

Loveland Panera Bread  
1550 Fall River Drive, Loveland  
8:30–10:30 AM

**Monday, May 15**

### Photo Review Session

6:30–8:30 PM  
<https://zoom.us/j/95087721084>  
Pass Code: 961019

Please mute your microphone during online meetings except when you are speaking, to avoid background noises.

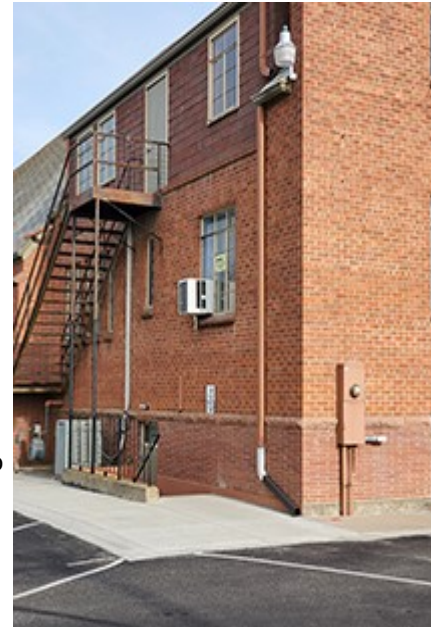
## Change in Meeting Venue

Beginning with the May 8 meeting, Loveland Photographic Society will be meeting at Trinity Methodist Church at 801 Cleveland Avenue in Loveland. After a recent remodel of the church facility, the fellowship hall in the lower level now offers several important features the board has been looking for in a meeting venue. The room is larger than our current meeting room and is able to be darkened much more effectively for viewing of the slideshow and Zoom presentations, and there is a large screen, overhead projector, sound system, and effective Wi-Fi service.

Having the extra space gives us the capacity to easily increase attendance and to have activities such as doing macro setups, light painting, or other workshops. The adjoining kitchen makes it easy to hold Christmas parties, as we were able to have pre-Covid. There is also adequate parking onsite, with the entrance to the parking lot on 8th Street and exit on Cleveland. Entrance to the meeting room will be on the northwest corner of the church.

There are a few concrete steps down to the door. For any who find the steps difficult, we will make arrangements for access to the door on the southwest side of the church, on 8th Street, and there is a lift there in the foyer that is wheelchair accessible. To use the lift, press and keep holding the button on the wall until the door to the lift opens. Then inside the lift, press and keep holding the up or down button.

We believe this will be a very beneficial change to our in-person programs, and we look forward to our first meeting in this new location.



## LPS Board of Directors

### ELECTED OFFICERS

**PRESIDENT**

— ARDETH CARLSON

**VICE PRESIDENT**

— RICH KREBS

**TREASURER/MEMBERSHIP**

— TIM HITCHCOCK

**SECRETARY**

JERRE JOHNSON

### CHAIRPERSONS

**IMMEDIATE PAST PRESIDENT**

— DAN KOZLOWSKI

**PROGRAMS**

— TIM KATHKA

— RICH KREBS

— RUTH SPRAIN

**COMPETITION**

— JEFF STEPHENSON

**WEBMASTER**

— MIKE TESKA

**MENTOR**

— MIKE WILCOX

**PSA REPRESENTATIVE**

LISA SCHNELZER

**SCHOLARSHIPS**

— RUTH SPRAIN

**NEWSLETTER**

— ARDETH CARLSON

**FORUM DIRECTOR**

— INGRID JACOBSON

**GREETING HOST**

— JERRE JOHNSON

## LPS InFocus

The e-Newsletter for the  
Loveland Photographic Society

### Mailing Address

P. O. Box 7604 • Loveland, CO 80537

### Public Facebook Page

[https://www.facebook.com/  
LovelandPhotographicSociety/](https://www.facebook.com/LovelandPhotographicSociety/)

### Members Only Facebook Group

[https://www.facebook.com/  
groups/237033251716/](https://www.facebook.com/groups/237033251716/)

### Submitting Pictures for the Monthly Competition or Photo Review Session

- Log on to the LPS website
- Mouse over the **Competitions** dropdown on the Home Page.
- Select menu item:  
**Submit images to a Competition**
- Select the Competition category or the Third Monday Photo Review
- At the bottom of the screen, click on **Upload images into the Competition.**
- Then click on the button **Select** which will open a window on your computer to select an image.
- Click on **Save Images and Proceed to Edit Page.**
- Type in a title and click on **Save any changes and return to original page.**
- You can replace any photo, up to the submission deadline, if desired.

The monthly competitions allow a single image per category. The photo review session allows up to three images.

## May Program: 7 Photos You Must Take

### Presentation by Joe Klocek

Photographers oftentimes find a subject matter or a compositional technique or a shooting style that works for them. And then they stop. If they don't expand their subject matter they won't continue to grow. We will examine 7 images that, by their very nature, will challenge you and force you to grow in your technical skills as a photographer.

Joe Klocek has worked in the photographic industry as a photographer, salesman, and instructor since 2005. In 2017 he founded The F Stops Here so he could focus on making professional quality photography available to every enthusiast. In the pursuit of this goal he has created several products, written seven books, and teaches courses on a variety of topics. In the past few years he has been a guest speaker for photographic societies and travel expositions. He lives in Denver with his wife, son, and unmanageable book collection.



Maroon Bells © Joe Klocek

## PSA Nature Interclub Rep Needed

Ardeth Carlson is planning to discontinue serving as the LPS rep for the PSA interclub competition for the Nature Division. This involves finding 6 entries from 6 different members in each of three rounds of competition. Sometimes members will send photos to the rep to consider for entry, but it also involves looking on social media sites in addition to checking the nature category in the LPS club competition. The deadlines each season are November 15, February 15, and April 15. If you are a member of PSA and are interested in taking over this position or want more information, contact Ardeth at [ardeth.carlson@gmail.com](mailto:ardeth.carlson@gmail.com).

### 2023 LPS Competition Categories

#### June

Monochrome

Topic: Faces

#### July

Nature

Monthly Topic: Gardens/Flowers

#### August

Travel

Topic: Macro

#### September

Monochrome

Topic: Historical

#### October

Nature—Wildlife

Topic: Night Sky

#### November

Travel

Monthly Topic: Transportation

### Larimer County Fair 2023 Open Class Photography

Loveland Photographic Society will be organizing and managing the Open Class Photography competition at the 2023 Larimer County Fair in August. Volunteers will be needed for these responsibilities:

August 1, Tuesday evening—Volunteers will check in the photograph entries; we would also like to staff the LPS display table to answer any questions about our club.

August 2, Wednesday morning—Six judges have been recruited; a pair of judges will be responsible for each of three divisions: children/youth/upper teens; amateur; and advanced amateur. We are looking for an assistant (“scribe”) for each pair of judges to write down a short comment from the judges on each photo entry tag.

Wednesday afternoon—Volunteers will hang all of the photos on display racks for public viewing during the fair.

August 9, Wednesday evening—Volunteers will return the photos to the exhibitors.

Members can also volunteer to staff the LPS table during the fair to answer questions. The table will have our brochures and a poster, so we won't need to have members there at all times. Afternoons and evenings are probably more beneficial, when possible.

There will be a signup sheet at club meetings and also on the LPS website under Discussion Forum>Upcoming Photo Opportunities and Events.

We hope as you make your late-summer plans, you will put this on your calendar and join this team effort.

### Vote on LPS Bylaws Revision

At the May 8, 2023, meeting, there will be final discussion, a vote on any amendments, and then a vote on the bylaws as revised. This will be a simple yay or nay vote and not a written ballot. Members attending via Zoom can unmute audio to vote.

If you want to see the revisions and the explanation of the proposed changes, use this link:

<https://drive.google.com/drive/folders/10VmFy8TKiFfMWYSyL9KHRXJ0OnkCVID?usp=sharing>

---

### Elected Officer Benefit

The Board has voted to offer an incentive to LPS members to serve as one of the four elected officers: president, vice president, secretary, and treasurer. Beginning in January 2024, these elected officers will be exempt from payment of dues during their time in office.

It has become increasingly difficult to find members who will volunteer to fill these offices for at least a one-year term, and we cannot function as a club without a leadership team to take care of the important business functions and practical aspects of club activities. We value the work done by these members and would like to extend this benefit to those who are willing to use their time and skills for the benefit of LPS.

### Participate in LPS Leadership

In late summer, the president will be appointing a nominating committee to provide a slate of candidates for 2024 and would like to hear from members to volunteer to serve on that committee.

The term of office for elective leadership positions of the club is one year, with election of new officers to be held in November. Elective offices are president, vice president, secretary, and treasurer/membership chair. Current treasurer Tim Hitchcock has indicated that he will not be serving after this year.

Competition chair Jeff Stephenson is also planning to step down from that responsibility at the end of the year. This is not an elective position, and if it is not filled, the club will no longer offer monthly competitions.

The board would like to fill several other volunteer positions, including a publicity chair to promote the club and a new field trip chair who can arrange or be the point person for photo shoot field trips for LPS members.

Depending on what is available at our future venue, we will likely also need a projectionist for the competition slideshow and online presentations.

If you are willing to step into any one of the above positions or would like to help in any other way, such as a technology expert or social time coordinator, please contact a member of the leadership team listed on page 1 of the newsletter.



# Competition Corner

## May Competition

Open Projected (included every month)  
Travel

Topic: Architecture

## Submission Deadline

Before Midnight, Monday, May 1

## Please keep the judging criteria in mind:

**Impact and Viewer Interest**—"Wow" factor is the nebulous quality where an image "pops." This subjective aspect of judging should not preempt the technical or composition aspects of an image.

**Composition**—Good composition is a pleasing arrangement of the elements in an image. There are many guidelines for good composition that judges may consider.

**Technical Quality**—This includes sharpness, focus, color, tonal scale, contrast, appropriate depth of field and other qualities. Consideration is also given for the effect the photographer was trying to achieve such as high key, multiple exposure, or selective focus.

**Monthly Topics**—The subject matter should be related in some manner to the topic. While there are no formal deductions or penalties, judges may reduce their overall score if they feel the image does not align with the monthly topic. With that said, creative interpretation is encouraged.

**Open Projected**—The image must begin as a photograph. From there, it is up to you. Any photograph may be entered in the Open Projected category.

## May Competition Groups

Participation in a group is determined by the average of the member's 9 previous LPS competition scores. The groups for the May competition:

Group 5—Kevin Burkhart, Max Coopwood, Darryl Hodson, Robert Huffsmith, Ed Ogle, Laurie Paulik, J.R. Schnelzer, Lisa Schnelzer, Ruth Sprain, Jeff Stephenson, Mike Wilcox

Group 4—Jerry Baumann, Ardeth Carlson, Kevin Fettig, Kurt Flock, Tim Hitchcock, Jerre Johnson, Tim Kathka, Dan Kozlowski, Dan O'Donnell, Bob Smith, Mike Teska

Group 3—Jenny Anderson, Marvin Froistad, Rich Krebs, Bob McDonnell, Amanda Morris, Octavio Noda, Michael Rothschild, Wayne Snodderly, Dave Van Riper

Group 2—none at this time

All other members will compete in group 1 until the member has 9 submitted images that reach an averaged score for a different group. An individual member's competition group might vary from month to month.



*May Competition Category Guidelines*

## Travel Category

A Photo Travel image expresses the **characteristic features or culture of a land** as they are found naturally. In the case of landscapes or buildings, it is not necessary to know "where the place is." The image only needs to have **identifiable features** so that the place can be recognized by someone visiting it.

Close-up pictures of people or objects must include features that **provide information about the location**. This means that the photo should include some elements of the setting.

The **only allowable digital adjustments** are removal of dust or digital noise, restoration of the appearance of the original scene, and complete conversion to greyscale monochrome (no spot or selective color). Other derivations, including infrared, are not permitted. Techniques that add, relocate, replace or remove any element of the original image, except by cropping, are not permitted. Fish-eye images, which are distorted or partial desaturation of areas of the image, are not allowed.

## All images must look natural.

Oversaturated, overly sharpened, and other images with unnatural artifacts, such as halos or strong vignetting, should be given lower scores in judging. For a full guide from PSA, use this link, then **Photo Travel** at the bottom, click on Guide for Photo Travel Judges and Chairs **pdf**:

<https://psa-photo.org/page/photo-travel>

## LPS April Best of Show

All competition photos, along with the scores, can be viewed on the LPS website under Competition Results. Check the box "Display All."



© Ed Ogle

BOS Open, Group 5  
Ed Ogle



© Robert Huffsmith

BOS Open, Group 4  
Robert Huffsmith



© Marvin Froistad

BOS Open, Group 3  
Marvin Froistad



© J.R. Schnelzer

BOS Nature, Group 5  
J.R. Schnelzer



© Marvin Froistad

BOS Nature, Group 3  
Marvin Froistad



© Kevin Burkhardt

BOS Topic, Group 5  
Kevin Burkhardt



© Bob Smith

BOS Nature, Group 4  
Bob Smith



© Amanda Morris

BOS Topic, Group 3  
Amanda Morris



© Ruth Sprain

BOS Topic, Group 4  
Ruth Sprain



**LPS April  
Award of Merit**



AOM Open, Group 5  
Michael Wilcox



AOM Open, Group 4  
Kurt Flock



AOM Open, Group 3  
Bob McDonnell



AOM Topic, Group 5  
Michael Wilcox



AOM Topic, Group 4  
Jerre Johnson



AOM Nature, Group 5  
Lisa Schnelzer



AOM Topic, Group 3  
Bob McDonnell



AOM Topic, Group 3  
Marvin Froistad



AOM Nature, Group 4  
Kurt Flock



AOM Nature, Group 3  
Wayne Snodderly



## Make the World Go Round!

BY ARDETH CARLSON

What are you going to do after you have kaleidoscoped half of your photos? How about turning the other half of your photos into orbs?

I learned about this technique from LPS member Jeanie Sumrall-Ajero, who also was the one who showed us how to create kaleidoscopes at our January meeting. (See that recording on our website, Membership>Resource Links>Videos.)

Begin by cropping your photo to a square. (A)

In Photoshop, go to Filter>Distort>Polar Coordinates, and click on Polar to Rectangular, check OK. (B)

Click Control J to create a second layer. With that layer selected in the layers panel, go to Image>Image Rotation>Flip Canvas Vertical. (C)

With the top layer still selected, go back to Filter>Distort>Polar Coordinates, and this time click on Rectangular to Polar.

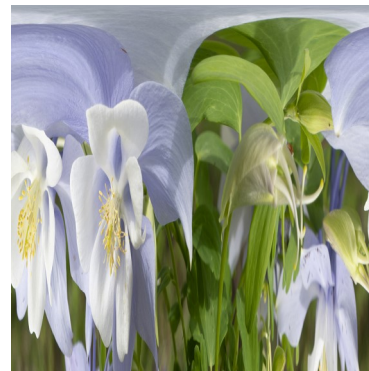
Flatten the layers, and VOILA! Your photo now has an interesting orb shape inside the square frame, and it has done some interesting things to your original photo! (D)

For a variation, again from the original square I made a second layer (Control J) and in the layers panel, I selected Linear Burn, which darkened the tone of the colors and made them pop. (E)

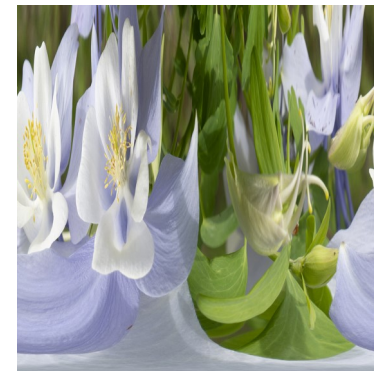
You can achieve many different effects by making multiple layers, flipping and rotating them in different ways, and using layer masks to reveal different parts of the layers to create your final image. You can also clone a feature into the center of your orb or play with other blending modes.



A



B



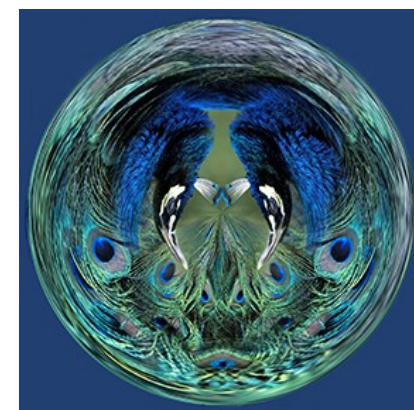
C



D



E





A second method is to take a square photo, first click on Rectangular to Polar (G); Control-J to create a second layer; this time go to Edit>Transform>Flip Vertical (H). Click on the symbol that looks like a circle in a square at the bottom of the right-hand panel to create a mask on the top layer (I). Use a brush with black selected (I) to erase parts of the top layer to eliminate the straight line created in step 1. Erase other parts of the top layer as desired to reveal portions of the bottom layer. This method creates interesting lines and colors in the outer corners rather than a solid color that is created by the first method (J).



G



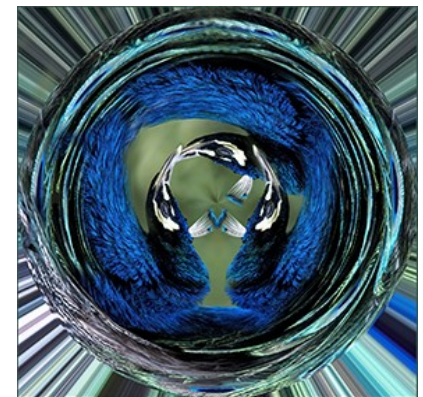
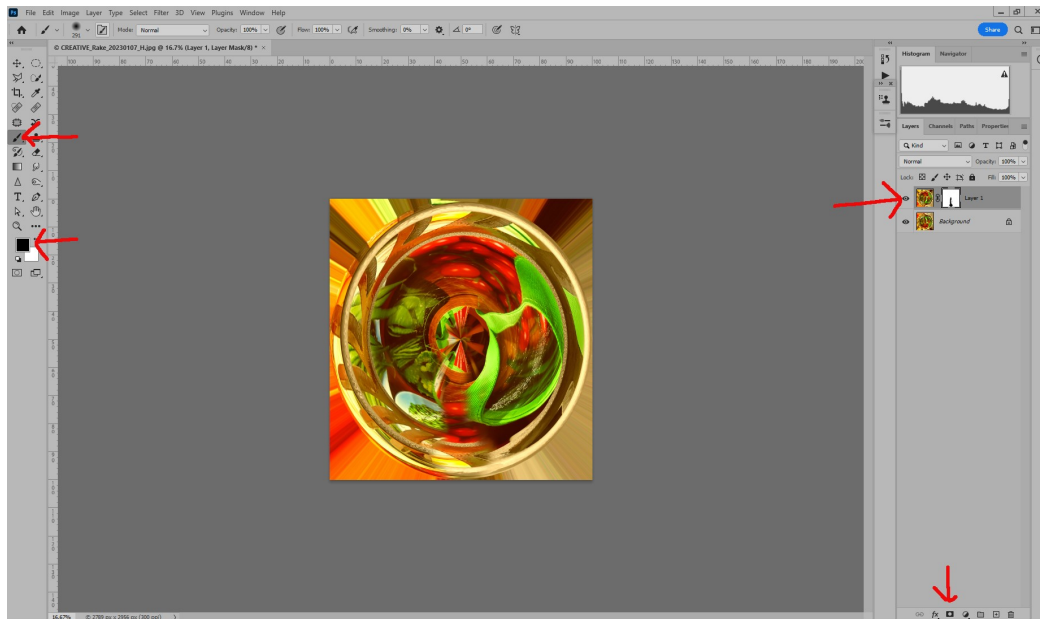
H



J

(Photos © Ardeth Carlson)

I





## Regional Photography Show

The 2023 Regional Photography Show at the Lincoln Gallery in downtown Loveland is on display until May 4, with a single theme of Monochrome. Several LPS members had images accepted in the show:

Don Reilly, "North Bound"  
Steve Scarborough, "Storm Clouds Gathering Near Hopi Point, Grand Canyon"  
J.R. Schnelzer, "Last Light on the Webber"  
Lisa Schnelzer, "A Cowboy and His Horse"

Lisa also received an Honorable Mention award for her photo "'Hassan in Djellabah."

This is an opportunity to see great examples of monochrome photography and be inspired for the LPS June monochrome competition category.

The gallery, located at 429 North Lincoln, is open from 11 AM—5 PM Tuesday through Saturday.

## Camera History Exhibit

The Greeley History Museum is featuring an exhibit called "Viewfinder: Through the Lens of Time:

"At their most basic, the machines we call cameras all do the same thing. They capture light. In 1839, Louis-Jacques Manda Daguerre figured out how to transfer that light onto copper, allowing us to record and preserve images for the future. These amazing mechanisms go back nearly 200 years—and have continued to evolve ever since. Journey behind the lens and discover how cameras developed into the digital tools of today."

The exhibit will run through January 7, 2024. The museum is located at 714 8<sup>th</sup> Street in Greeley.

## LPS Membership

Although LPS welcomes guests to our monthly club meetings, there are benefits to joining as a member. If you like to see how your images fare in competition, you can submit up to 3 photos each month in our club competitions; you also have the opportunity to have an image submitted in the PSA interclub competitions. If you hate competitions (!), the club is also a great place to meet other photographers, get critiques and comments at the Third Monday Review sessions, find photo-op events and activities, and watch the recordings of meeting presentations. You might enjoy organizing and leading field trips or participating in them. You can also meet up with LPS members at the monthly Saturday morning Bull Sessions.

Your membership dues also fund our annual Youth Showcase, which encourages photographers from our northern Colorado high schools to pursue the art of photography and provides them with an opportunity to have their images displayed with national/international exposure at the annual PSA Photo Festival.

The leadership team listed on page 1 of the newsletter is always open to hearing your ideas for ways to keep LPS vital and energized. You can also email the InFocus editor at [ardeth.carlson@gmail.com](mailto:ardeth.carlson@gmail.com).

## LPS Speaker Recordings

As a reminder, LPS meeting presentations have been recorded and posted ever since the start of COVID and are available to view at any time. You can find links to the videos on the LPS website; when you **login**, go to **Membership>Resource Links>Videos**. Most of our speakers have graciously allowed us to record their presentations as long as they were made available to LPS members only. Please *do not share* these links with non-members unless they are marked as shareable in the list.

## Member Submissions Request

### Invitation to Submit an Article

The newsletter editor is always looking for material that would be of interest to our members for future issues of InFocus. There are many subjects for which you can share your expertise or experiences, such as post-processing techniques, camera equipment, and great locations to shoot.

If you aren't confident in your writing ability, the editor will help polish your article for publication. Contributions by LPS members will help this newsletter be relevant and of value to our readers. Send your ideas or articles to [ardeth.carlson@gmail.com](mailto:ardeth.carlson@gmail.com).



Share your photos and keep in touch with LPS when you join our Facebook group **Members of Loveland Photographic Society**. You must be a current member to join the group.

### JOIN THE CLUB

If you are reading this newsletter as a non-member and would like to join the Loveland Photographic Society, go to the main page on the [www.lps.cc](http://www.lps.cc) website and click on **Membership > Join or Renew**. Annual dues are \$45.