

Club Meetings

The June club meeting will be hybrid in-person plus Zoom; the Photo Review Session will be online only.

Saturday, June 11

Photo Bull Session

Loveland Panera Bread
1550 Fall River Drive, Loveland
8:30–10:30 AM

Monday, June 13

Monthly Club Meeting

Best Western
5542–US Hwy 34
6:30–8:30 PM

<https://zoom.us/j/93226580276>

Monday, June 20

Photo Review Session

6:30–8:30 PM

<https://zoom.us/j/95087721084>

Tuesday, July 5

LPS Board Meeting

Perkins Restaurant
2222 W. Eisenhower, Loveland
Meal 5:30 PM; meeting at 6:30
Open to All

Please mute your microphone during online meetings except when you are speaking, to avoid extraneous noises.

June Meeting Agenda

Understanding Raptors Presented by Devin Jaffe

Devin Jaffe of Nature's Educators, a nonprofit wildlife organization, will present our program on June 13. Devin grew up around animals and was a 4-H member. She graduated from Hastings College in 2008 with a B.A. in wildlife management, a major she created for the school. She founded Nature's Educators in 2008 after interning with the Pueblo Raptor Center and Raptor Recovery Nebraska to learn wildlife education, husbandry, and rehabilitation.

She is a master falconer and is the president of the High Plains Falconry Club in Colorado. She also works as a falconer for Wings Over Colorado, performing falconry-based bird abatement. She is a licensed raptor propagator and has her own program, Mile High Falcons. Her hobbies (aside from falconry) include visiting new restaurants with her husband, playing with her dog and parrots, and playing music.

Plan to join Devin as she presents via Zoom to introduce a couple of live raptors. She will dive into the characteristics that define raptors and why they are important to our ecosystems. She will explain the proper way to read and understand their body language. This understanding and observation will help you in the field in hopes to avoid disturbing the raptors and to help them feel comfortable while you take photos. The personal stories of the birds present will be shared as well as conservation information.



LPS Board of Directors

- [PRESIDENT](#)
- DAN KOZLOWSKI
- [VICE PRESIDENT](#)
- RICH KREBS
- [TREASURER](#)
- SANDY LOUCKS
- [SECRETARY](#)
- JERRE JOHNSON
- [PROGRAMS](#)
- TIM KATHKA
- RICH KREBS
- RUTH SPRAIN
- [MEMBERSHIP](#)
- SANDY LOUCKS
- [COMPETITION](#)
- JEFF STEPHENSON

Chairpersons

- [FIELD TRIPS](#)
- LYNNE LEWIS
- [FORUM DIRECTOR](#)
- INGRID JACOBSON
- [GREETING HOST](#)
- OPEN
- [MENTOR/](#)
- MIKE TESKA
- [PUBLICITY](#)
- OPEN
- [SCHOLARSHIPS](#)
- RUTH SPRAIN
- [NEWSLETTER](#)
- ARDETH CARLSON
- [WEBMASTER](#)
- BILL SHANAHAN
- [PSA REPRESENTATIVE](#)
- LISA SCHNELZER

InFocus

The e-Newsletter for the
Loveland Photographic Society

Mailing Address

P. O. Box 7604 • Loveland, CO 80537

Public Facebook Page

[https://www.facebook.com/
LovelandPhotographicSociety/](https://www.facebook.com/LovelandPhotographicSociety/)

Members Only Facebook Group

[https://www.facebook.com/
groups/237033251716/](https://www.facebook.com/groups/237033251716/)

Submitting Pictures for the Monthly Competition or Photo Review Session

- Log on to the LPS website
- Mouse over the **Competitions** dropdown on the Home Page.
- Select menu item:
Submit images to a Competition
- Select the Competition category or the Third Monday Photo Review
- At the bottom of the screen, click on **Upload images into the Competition.**
- Then click on the button **Select** which will open a window on your computer to select an image.
- Click on **Save Images and Proceed to Edit Page.**
- Type in a title and click on **Save any changes and return to original page.**
- You can replace any photo, up to the submission deadline, if desired.

The monthly competitions allow a single image per category. The photo review session allows up to three images. Include your last name in the title; this will allow us to limit the number of images if it is necessary.

Nature Observation

In light of the presentation on raptors by the speaker Devin Jaffe at our June meeting, this story is of interest that was posted by the Bald Eagle Watch project, in which LPS member Ardeth Carlson participates, regarding the death of a bald eagle eaglet. One of the BEW volunteer observers of this particular nest also shared: "It is interesting to note that earlier in the day, the parents brought a baby raccoon to the nest to feed the eaglets."

From Colorado Parks & Wildlife:

At 8:30 p.m. on Monday, May 23, CPW Wildlife Officer Mike Grooms responded to the Fort St. Vrain bald eagle nest in Platteville, Colo. that Xcel Energy has a live camera on. The camera showed a raccoon scaling to the top of the nest tree and grabbing the older, larger of the two eaglets from the nest around 7 p.m. Wildlife Officer Grooms was able to collect what remained from the carcass and delivered it to CPW's Wildlife Health Lab where officials will submit it for testing of Highly Pathogenic Avian Influenza.

The second eaglet has been observed alive in the nest as of Tuesday morning. The two eaglets were six weeks old as of Monday. Eaglets approach adult size by 9-10 weeks of life and are close to fledging from the nest around 12 weeks.

June Meeting Info

After some logistical kinks have, hopefully, been worked out at the May LPS in-person meeting at the Best Western Plus in Loveland, the June meeting will also be a hybrid for members who want to gather at the hotel as well as live streaming also available at the usual Zoom link on page 1 of the newsletter. The speaker will be making her presentation via Zoom.

The room at the LPS May meeting was full at the beginning of the meeting, due to the attendance by a large number of Youth Showcase award winners and their families and friends. When most of them left after the awards presentation and photo slide show, the room was then fairly empty, with a lot of space for attendees to spread out.

For those attending online, please be sure to mute your microphone, as members in the meeting room can hear your voices and your home background noises on the meeting room speaker system!

The hotel is at the southwest corner of the intersection of Highway 34 and I-25; the parking lot is accessed via the turn-in next to the Conoco station on East Eisenhower. Note that when exiting the hotel parking lot onto Highway 34, there is no left turn to go west, so it is necessary to go right and then turn around at the Centerra shops east of the interstate or turn right onto I-25 and exit on 402 to go west.

Share your photos and keep in touch with LPS when you join our Facebook group **Members of Loveland Photographic Society**. You must be a current member to join the group.

Keep LPS Alive!

Volunteers are still needed to assume the duties of webmaster and treasurer/ membership chairperson,

It cannot be stressed enough how vital these positions are to the continued operation of our club. Certainly we must have a treasurer to handle our finances and someone responsible for keeping track of new member activation and membership updates.

Take a look at the list of webmaster duties and you can see what will happen without a website administrator, including no website which means no competition submissions or judging, no posting of competition photos, and no newsletter.

Duties of the Treasurer/ Membership Chair

BY SANDY LOUCKS

Because there is so much overlap, the positions of treasurer and membership chair go together and should be assumed by one person. The treasurer has to deal with all money matters, income and expenses, which are all directly related to membership (new members and renewals). The total time invested per week averages 2-4 hours (or 8-16 hours per month). It's a lot of small details, but all are simple to do.

Treasurer

Duties include managing both bank accounts (checking and savings), balancing said accounts, paying bills for the club via debit card and checks, maintaining/storing all financial documents for seven years (it all fits into just one bin), transferring money from PayPal to our bank accounts each month,

creating/maintaining a spreadsheet and generating bi-monthly (every two months) financial reports for board meetings, and going to the post office at least once per month (more often is better) to sort the mail, collect checks for member renewals, and pick up some bills.

Part of the treasurer's duties are to oversee all banking changes. When we get a new president, secretary, or treasurer, the treasurer must generate specific documents in a specific format to inform the bank of the changes being made.

Another duty is to keep up with our affiliates and maintain any documentation/records they require to keep our affiliation status.

Membership

Duties include activating new member accounts and sending them a greeting and notification of membership activation. New members are not activated until money is received. The same holds true for renewing members, i.e. updates are made only after money is received. This requires some simple record keeping.

Also, when we meet in person, I will make a name tag for each new member. Name tags also can be made of veteran members who have lost theirs.

Occasionally the membership list needs updating by deleting people who are no longer members. If their account has been expired and inactive for 18 months or longer, I delete the account for financial reasons.

Sandy will be available to help the new treasurer/membership chair learn the ropes.

Webmaster Duties

BY BILL SHANAHAN

The web administrator position takes 1-2 hours per month on average. I've maintained a notebook in PDF form that serves as a cheat sheet, with instructions on how to find your way around the website and how to handle routine items. Visual Pursuits, the authors of the LPS Website, also has built-in help covering their administrator tools.

These are the main webmaster duties:

- Upload newsletter and newsletter page
- Update competition results once a month
- Update web pages as needed, usually once per year
- Update email forwarding list, usually once per year
- Work with treasurer to pay annual fees
- Update roles for new board members

Along with the cheat sheet, I will pass along the following items:

- Excel spreadsheet outlining the roles assigned to board members.
- Excel spreadsheet covering the newsletter index
- Perl scripts that convert the competition results and newsletter index to HTML code; this can be done in the Visual Pursuits editor, but the old hacker in me wants to edit in HTML.

Familiarity with HTML and Perl scripts would be helpful but not necessary.

Bill will be available to help the new administrator.

Competition Corner

June Competition

Open Projected
Travel

Monthly Topic: Very Colorado

Submission Deadline

Before Midnight, Monday, June 6

Please keep the judging criteria in mind:

Impact and Viewer Interest—"Wow" factor is the nebulous quality where an image "pops." This subjective aspect of judging should not preempt the technical or composition aspects of an image.

Composition—Good composition is a pleasing arrangement of the elements in an image. There are many guidelines for good composition that judges may consider.

Technical Quality—This includes sharpness, focus, color, tonal scale, contrast, appropriate depth of field and other qualities. Consideration is also given for the effect the photographer was trying to achieve such as high key, multiple exposure, or selective focus.

Monthly Topics—The subject matter should be related in some manner to the topic. While there are no formal deductions or penalties, judges may reduce their overall score if they feel the image does not align with the monthly topic. With that said, creative interpretation is encouraged.

Open Projected—The image must begin as a photograph. From there, it is up to you. Any photograph may be entered in the Open Projected category.

Travel Category

A Photo Travel image expresses the **characteristic features or culture of a land** as they are found naturally. In the case of landscapes or buildings, it is not necessary to know "where the place is." The image only needs to have **identifiable features** so that the place can be recognized by someone visiting it.

Close-up pictures of people or objects must include features that **provide information about the location**. This means that the photo should not be only a portrait of a person or persons, even if that person is dressed in some type of native garb.

The **only allowable adjustments** are removal of dust or digital noise, restoration of the appearance of the original scene, and complete conversion to greyscale monochrome (no spot or selective color). Other derivations, including infrared, are not permitted. Techniques that add, relocate, replace or remove any element of the original image, except by cropping, are not permitted.

All images must look natural. Oversaturated, overly sharpened, and other images with unnatural artifacts, such as halos or strong vignetting, should be given lower scores in judging. Extreme fish-eye images that are distorted do not appear natural. Partial desaturation of areas of the image does not look natural and is not allowed.

For a full PDF guide from PSA, use this link:

<https://psa-photo.org/page/photo-travel>

June Competition Groups

Participation in a group is determined by the average of the 9 previous LPS competition scores. The groups for the June competition:

Group 5—Ardeh Carlson, Keith Clements, Max Coopwood, Dan O'Donnell, J.R. Schnelzer, Lisa Schnelzer, Jeff Stephenson

Group 4—Robert Huffsmith, Ed Ogle, Laurie Paulik, Josemaria Quera, Mike Teska, Mike Wilcox

Group 3—Sterling Brody, Kurt Flock, Jerre Johnson, Tim Kathka, Dan Kozlowski, Bob McDonnell, Octavio Noda, Michael Rothschild, Ruth Sprain, Dave Van Riper

Group 2—Kevin Clarke, Marvin Froistad, Tim Hitchcock, Rich Krebs, Warren Larson, Renie Poole, Paul Weis

All other members will compete in Group 1 until the member has 9 submitted images that reach an averaged score for a different group. An individual member's competition group might vary from month to month.

New Members

A warm welcome to new member
Kevin Burkhart.

Upcoming 2022 Monthly Topics

July: In Motion
August: Weather
September: Road Trip
October: Seasonal
November: Critters

PSA Interclub Competitions

LPS is a member club of the Photographic Society of America and participates in three divisions of interclub competition: nature, print, and travel. There are three rounds of competition per season, with deadlines on November 15, February 15, and April 15.

For the **nature and travel divisions**, each club can submit up to six images by six different members in each round. Photos should be in JPG format with dimensions of horizontal no greater than 1400 pixels and vertical no greater than 1050 pixels.

In the **pictorial print division**, there are five image categories: large color, small color, large mono, small mono, and creative altered reality. Participating clubs can submit up to four prints by four different members in each category at each round.

NATURE DIVISION:
Ardeth Carlson, LPS Rep
ardeth.carlson@gmail.com

Nature Division (ND) image guidelines can be found at <https://psa-photo.org/index.php?nature-division>. Ardeth is looking for images that illustrate an interesting behavior or a unique point of view, not just a landscape or wildlife that is in good focus! Storytelling is an important part of the image.

PICTORIAL PRINT:
Lisa Schnelzer, LPS Rep
lisaschnelzer@gmail.com

Description of the five image categories in the Pictorial Print Division (PPD) can be found on the PSA website: <https://psa-photo.org/index.php?divisions-pictorial-print-interclub-competition-entering-rules>. For further information regarding the size of prints, etc., contact Lisa.

TRAVEL DIVISION:
Rich Krebs, LPS Rep
rkrebs318@gmail.com

A definition of a travel photo and a PDF of the Travel Division (PTD) guidelines can be found at <https://psa-photo.org/index.php?divisions-photo-travel>. Rich wants images that show characteristic features of a place or a people.

LPS members who are interested in having their photos considered for our club's submissions to a PSA interclub competition can contact the LPS rep for more details. Photos are now being collected by the reps for the 2022-2023 season.

PSA Interclub Results

After the three rounds of competition of the 2021-2022 season in the Travel Division, LPS did very well, placing 2nd of 27 clubs in Group B. Two of our members were award winners in Round 3:

Lisa Schnelzer, Merit, "Sculpted Sandstone"
Rich Krebs, HM, "Oia 3"

In the Pictorial Print competition, LPS had three award winners in Round 2:

Lisa Schnelzer, Large Monochrome, HM,
"Simpatico"
Max Coopwood, Large Color, HM,
"Tilted Upright"

Lisa Schnelzer, Small Monochrome, 3rd,
"Two Wolves"



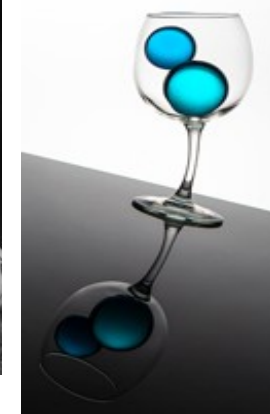
Sculpted Sandstone—Lisa Schnelzer



Oia 3—Rich Krebs



Simpatico
Lisa Schnelzer



Tilted Upright
Max Coopwood



Two Wolves—Lisa Schnelzer

LPS May Awards

All of the competition photos, along with the scores, can be viewed in a larger size on the LPS website under "Competition Results."



© Lisa Schnelzer

BOS Open, Group 5
Lisa Schnelzer



© Lisa Schnelzer

BOS Nature, Group 5
Lisa Schnelzer



© J.R. Schnelzer

BOS Topic, Group 5
J.R. Schnelzer



© Kurt Flock

BOS Topic, Group 3
Kurt Flock



BOS Topic, Group 2
Mike Wilcox



© Ed Ogle

BOS Open, Group 4
Ed Ogle



© Jerre Johnson

BOS Open, Group 3
Jerre Johnson



BOS Open, Group 2
Mike Wilcox



BOS Nature, Group 3
Mike Teska



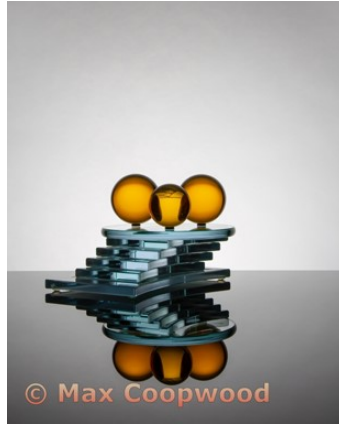
© Laurie Paulik

BOS Nature, Group 4
Laurie Paulik



BOS Nature, Group 2
Mike Wilcox

May Awards—Continued



© Max Coopwood

AOM Topic, Group 5
Max Coopwood



© Ed Ogle

AOM Topic, Group 5
Ed Ogle



© Timothy Kathka

AOM Topic, Group 3
Tim Kathka



© Octavio Noda

AOM Topic, Group 2
Octavio Noda



© Octavio Noda

AOM Open, Group 2
Octavio Noda



AOM Open, Group 5
Dan O'Donnell



© Laurie Paulik

AOM Open, Group 4
Laurie Paulik



© Kurt Flock

AOM Open, Group 3
Kurt Flock



© Kurt Flock

AOM Nature, Group 3
Kurt Flock



© Jeff Stephenson

AOM Nature, Group 5
Jeff Stephenson



© Octavio Noda

AOM Nature, Group 2
Octavio Noda

PSA Photo Festival 2022

Make plans now to attend this year's PSA Photo Festival, being held in Colorado Springs from September 21 through September 24.

Online early-bird registration is available until May 31. If you are not currently a member and join before May 31, you will receive an \$80 discount on the festival registration fee. One-day passes are also available for \$99, if you want to drive down to the Springs for one specific day only.

The festival hotel will be the Doubletree Hotel on 1775 E. Cheyenne Blvd.; use the link on the PSA website for a discounted room rate.

Listed daytime speakers are Harold Davis, John Gerlach, Mike Pach, Aaron Priest, Deborah Sandidge, Siggie Williams, and Wendy Shattil, and the scheduled evening speakers are Scott Wilson, Lisa Langell, and John Paul Caponigro. Two workshops are also offered, one on macro photography by Charles Needle and one featuring a model shoot by Jerome Hamilton. Photo tours in the Colorado Springs area will be offered from Monday, September 19, through Thursday, September 22.

If you are a member of PSA, volunteers are needed to help out with the festival in such roles as doing check-in for meals or photo tours or monitoring the print gallery. You can volunteer for as little as one or two hours. If you are interested, email Twila Bourlon at hq@psa-photo.org.

Check out the full details of the festival at <https://psa-programs.org/photo-festival-2022/>.

Contest Opportunity

F-Stop Magazine is an online photography magazine that features contemporary artworks from established and emerging photographers. The magazine organizes photo contests that are available to anyone—you simply need to submit up to 12 photographs from a single body of work along with your project statement.

The current contest:
Issue #114: The Portrait 2022 – August/September
Deadline: July 15, 2022

Learning to select and edit your 12 best photos on a given topic is a good exercise in critiquing your own work and telling a cohesive story.

Even though this contest doesn't grant any cash awards, it can help younger/less experienced photographers gain exposure. Another good one for fine art photographers to join.

Check out this and other contests on their website: <https://www.fstopmagazine.com/home.html>

PSA fees and rates—PSA annual membership fees for individuals range from \$45 to \$100, depending upon location and if a printed journal is included or not. A discounted rate is available for youths under 18.



Photo Challenges

Stretch your photo skills and find motivation by participating in various online photo challenges. Here are a few suggestions.

18 Fun Photography Challenges—challenge ideas to try at any time; feel free to post on the LPS Members Only Facebook page <https://fixthephoto.com/blog/contests/photography-challenges.html>

Digital Photography School—new images taken during challenge week <https://digital-photography-school.com/weekly-challenge/>

PSA 365-Day Challenge—Members only. Shoot new images or pull from archives <https://psa-photo.org/index.php?365-day-gallery>.

Flickr Friday—Join Flickr group. A new challenge is posted each Friday; photo must be taken before the following Friday.

Photo Editing Programs

Here are three software programs that include filters and other editing capabilities:

Smart Photo Editor—This is a purchased product from Anthropics.com, currently \$30, with numerous editing tools and hundreds of pages of special effects you can add to your uploaded photo. This can be installed as an external editor to Photoshop and Lightroom, in the same way as the NIK collection filters.

Lunapic—It's a fun free online photo editor that includes editing tools and a plethora of filters and art effects, including sketching, painting, and animation.

Tuxpi.com—add free fun effects to your photo, such as kaleidoscopes, swirls, specialty borders, and re-toning.

LPS Board Meetings Open to All Members

The LPS board will now be holding its meetings in person at the Perkins restaurant on West Eisenhower in Loveland. The meetings are open to all members. If you are interested in seeing how your leadership team tends to club business, you are welcome to attend.

Accessing the LPS website

Be sure to enter www.lps.cc to access the website. Without including the [www](http://www.lps.cc), you will likely get an error message.



JOIN THE CLUB

If you are reading this newsletter as a non-member and would like to join the Loveland Photographic Society, go to the main page on the www.lps.cc website and click on **Membership > Join or Renew**. Annual dues are \$45.

Member Submissions Request

Share Your Travel Story

Now that loosening COVID restrictions are allowing us to begin making travel plans once again, LPS members are most likely finding places to take their cameras. If you have made a trip to an area that you feel would be of interest to other photographers, write a short article describing your experience and include your photos and submit to the newsletter editor: ardeth.carlson@gmail.com

Photography Tools

Tilt-shift lenses, fisheyes, ultra-fast shutter controls, portable lighting setups, camera straps—options for tools to add to your camera bag seem limitless. For those of us who have pondered what innovative equipment would help boost our photography experience, your first-hand experience would be helpful.

Your Favorite Photography Location

Where do you love to take your camera in the Colorado Front Range—or even farther afield? Share one of your go-to spots with other LPS enthusiasts! Write an article for InFocus or just send some basic info to be included in a future issue, and include one or two photos from that location. Send to ardeth.carlson@gmail.com.

The LPS Affiliate Program

The following companies have offered LPS various programs for the club and anyone who uses the special **Affiliates** link provided on the website to make purchases.

- ◆ Adorama
- ◆ Feisol
- ◆ MindShift Gear
- ◆ Red River Paper
- ◆ Think Tank Photo
- ◆ Topaz Labs

It's important to use the links on the LPS website **each time you order**. Otherwise, you and LPS will not receive the benefits of the program each company offers.

Your Ideas & Suggestions

If you have ideas for newsletter articles for future issues of InFocus or upcoming events to report, you're always welcome to share those with the editor. Send suggestions, inquiries, or written articles for consideration to the editor: ardeth.carlson@gmail.com.

