

LPS INFOCUS

Loveland Photographic Society
Monthly Newsletter

July 2025

In this issue:

| | |
|---|------------|
| July Meeting: Q&A Session with J.R. Schnelzer..... | Page 2 |
| LPS Officers and Program Committee Members Needed for 2026..... | Page 3 |
| Help with the Larimer County Fair Photography Competition..... | Page 3 |
| Competition Corner..... | Page 4 |
| Topic: Street Photography | Page 5 |
| Travel Competition Guidelines..... | Page 6 |
| LPS Judge Qualifications..... | Page 6 |
| Newsletter Cover Challenge..... | Page 6 |
| PSA Interclub Information..... | Page 7 |
| PSA Pictorial Print Interclub End-of-Year Award Winners..... | Page 7 |
| LPS Competition June Winners..... | Pages 8-10 |
| LPS General Competition Rules..... | Page 11 |
| LPS Membership..... | Page 11 |
| Enter the Larimer County Fair Open Class Photography Competition.. | Page 11 |
| General Club Information:..... | Page 12 |
| Third Monday Review | |
| Zoom Meeting Guidelines | |
| Newsletter Index | |
| Discussion Forums | |
| Speaker Recordings | |
| Member Facebook Page | |
| Join the Club | |

Club Meetings

Monthly club meetings are hybrid in-person plus Zoom; the Third Monday Review session is online only. No passcode is needed for the online meetings

Tuesday, July 1

LPS Board Meeting

Perkins Restaurant
2222 W. Eisenhower, Loveland
6:30 PM
Open to All

Monday, July 14

Monthly Club Meeting

Trinity United Methodist Church
801 Cleveland Avenue, Loveland
Social time 6:00 PM
Meeting 6:30–8:30 PM

[https://us06web.zoom.us/j/93226580276?](https://us06web.zoom.us/j/93226580276?pwd=eWxtbVYzTGpWbWlYY3lscGNwbWZRdz09)

[j/93226580276?pwd=eWxtbVYzTGpWbWlYY3lscGNwbWZRdz09](https://us06web.zoom.us/j/93226580276?pwd=eWxtbVYzTGpWbWlYY3lscGNwbWZRdz09)

Monday, July 21

Third Monday Photo Review

6:30–8:30 PM

[https://us06web.zoom.us/j/95087721084?](https://us06web.zoom.us/j/95087721084?pwd=eXlIMndWenQyaCt6WUV6RmpenlWdz09)

[j/95087721084?pwd=eXlIMndWenQyaCt6WUV6RmpenlWdz09](https://us06web.zoom.us/j/95087721084?pwd=eXlIMndWenQyaCt6WUV6RmpenlWdz09)

The LPS Board meetings are open to all members. If you are interested in seeing how your leadership team tends to club business, you are welcome to attend, although only Board members can vote.

Photo by Ardeth Carlson

LPS July Meeting

Q&A Session, Led by J.R. Schnelzer

BY ARDETH CARLSON

Planning for the July meeting was complicated by a perfect storm of unusual coincidence in which it appeared that not only will our president and vice president be unavailable but also it appeared that every member who is familiar with our projection system, competition slideshow software, and Zoom meeting authorization was also going to be gone. In light of discussions about the possibility of canceling the July meeting, our scheduled presenter decided to postpone until a future date.

Fortunately for the continuity of our club meetings, Mike Teska, our former projectionist, will be able to be at the meeting and run the Zoom session, which will be recorded, as well as the competition slideshow, so we will be able to have our regularly scheduled gathering.

It is equally as fortunate that we have as one of our long-time club members the current president of the Photographic Society of America Worldwide (PSA), J.R. Schnelzer, who is able to step in as our featured speaker. Instead of having J.R. make a formal presentation, this will be a time for participants, both members and guests, to ask J.R. about LPS, our competition rules, judging criteria, guidelines and tips for different genres of photography, and information about PSA. It is also an opportunity for you to talk about what you would like to see from LPS as a photographic community.

J.R. is an award-winning semiprofessional photographer working in the areas of fine art, nature, stock, and commercial photography. J.R. has over 40 years of photographic experience. He began his passion for photography working in his father's darkroom, later attending Ohio State University working on an MFA in photography. During his studies, he was fortunate enough to spend time with Minor White, Ansel Adams, John Sexton, and Kim Weston, just to name a few.

J.R. is responsible for the formation of the Center for Fine Art Photography in Colorado. He is past president of the Loveland Photographic Society and has become heavily involved with the Photographic Society of America, just finishing his second term as president this year. He was named first in the world in both color and monochrome small prints in the 2019 Who's Who for PSA and holds earned designations of FPSA, MPSA2, and EFIAP. He also has been awarded a Blue Pin from FIAP (Fédération Internationale de l'Art Photographique).

He has done work for Mannheim Steamroller and has been represented in many magazines and books. In 2014 he was invited to exhibit in the Master of Photography Exhibition in Hong Kong and also the Photo La Gacilly Exhibition in France. He has also been invited to exhibit in China and Morocco.

J.R. has judged photographic competitions locally, regionally, and internationally. His artistic philosophy: "Photography is the process of creating future memories. My work is my language: I view the world in terms of their form and beautiful light. The hope of my art is to hold for you, in the subsiding of life's rush, the beauty of visual moments."

If you have questions you would like J.R. to address at the meeting and you are unable to attend either in person or online, you can send those ahead of the meeting to jrschnelzer@msn.com.



From the Board of Directors

LPS Officer Openings for 2026

It's not too early to begin thinking about the November election of LPS officers for next year. The current secretary, Jerre Johnson, is willing to serve in that capacity again. There will be a need for a new president and vice president, as current VP Malcolm Patten wishes not to assume the office of president and prefers to remain as our projectionist. Treasurer Jen Lammey, who has served for two years, will also be stepping aside from that role, although we do have a member who is considering taking on that office.

The main responsibility of the president is to preside over the club and board meetings and to be the point person for issues that arise in the club, working together with the other Board members.

The vice president presides over meetings in the absence of the president and assumes the duties of the president should he or she need to step aside. Generally the vice president becomes familiar with the business of the club and then assumes the office of president the following year, but that is not a requirement.

If you are interested in running for any of the elected offices or would like more information, speak to any member of the board or email the LPS secretary, Jerre Johnson, at jerrejohnson.colorado@gmail.com.

Join the 2026 Program Committee

The Program Committee is composed of three members who work together to schedule presentations and activities at the LPS monthly meetings. Two new members are needed to join the committee beginning in January 2026. Almost all of the work is done via emails between the committee members. A committee member then follows up in contacting the speaker to finalize plans. If you have ideas about making our monthly meetings relevant and interesting or want more information about joining the committee, please speak to Ardeth Carlson, Tim Kathka, or Rich Krebs. ardeth.carlson@gmail.com
tkathka@gmail.com
rkrebs318@gmail.com

Volunteers Still Needed for County Fair Open Class Photography Competition

For the third year, LPS will be responsible for managing the Open Class Photography competition at the Larimer County Fair. Ardeth Carlson is serving as the department supervisor and still needs volunteers to staff the check-in table, judge the competition, and hang the images for exhibition during the fair.

The date of entry check-in is Tuesday, July 29, between 4:00 and 7:00 PM. Two volunteers are needed for the check-in process and 2-3 to attach the hang tags and move the photos into stacks. This is a fun opportunity for our members to interact with photography enthusiasts in our northern Colorado area. The check-in process is not complicated, and Ardeth will be on hand to help with any questions or issues that might arise.

Judging will take place on Wednesday morning, July 30, from 8:00 AM to noon. 10 judges will work in teams of 2 to select blue, red, and white ribbon winners in each category; judges write very brief comments, but photos are not given a score.

Additional volunteers are needed on Wednesday afternoon from 12:30-5:00 PM to hang the photos; in 2024, there were 240 entries, and we did finish around 4 PM. Again, Ardeth will be there to help with placement.

Please contact Ardeth at ardeth.carlson@gmail.com to volunteer for any of these tasks or for more information.

The fair board provides an honorarium for judges, which goes to our club rather than the individual judges, so this club activity not only gives us a noticeable presence in the community but also adds to our funds to continue our services to members and for our annual LPS Youth Showcase to encourage young area photographers to pursue photography in their future.

Link to June Presenters

Charles and Missy Needle gave us permission to post the recording of their Smartphone Photography presentation until June 16, so this video is now no longer available on our website. You can subscribe to their newsletter or follow up with their helpful tips and techniques on their website at <https://charlesneedlephoto.com/>

LPS Board of Directors

ELECTED OFFICERS

PRESIDENT
— RICH KREBS
VICE PRESIDENT
— MALCOLM PATTEN
TREASURER/MEMBERSHIP
— JEN LAMMEY
SECRETARY
JERRE JOHNSON

CHAIRPERSONS

PROGRAMS
—TIM KATHKA
—RICH KREBS
— ARDETH CARLSON
COMPETITION
— ROB HUFFSMITH
WEBMASTER
MIKE TESKA
PROJECTIONIST
— MALCOLM PATTEN
MENTOR
—MIKE WILCOX
PSA REPRESENTATIVE
—LISA SCHNELZER
SCHOLARSHIPS
— RUTH SPRAIN
NEWSLETTER
—ARDETH CARLSON
FIELD TRIPS
—JIM ROODE
PUBLICITY
—KEVIN FETTIG
FORUM DIRECTOR
—INGRID JACOBSON
GREETING HOST
—BILL LUNDQUIST

Mailing Address

P. O. Box 7604
Loveland, CO 80537

Members-Only Facebook Group

<https://www.facebook.com/groups/237033251716/>

Public Facebook Page

<https://www.facebook.com/LovelandPhotographicSociety/>

Competition Corner

Submitting Pictures for Competition or the Photo Review Session

- Log on to the LPS website
- Mouse over the **Competitions** dropdown on the Home Page.
- Select
Submit images to a Competition
- Select the Competition category or the Third Monday Photo Review
- At the bottom of the screen, click on **Upload images into the Competition.**
- Then click on the button **Select** which will open a window on your computer to select an image.
- Click on **Save Images and Proceed to Edit Page.**
- Type in a title and click on **Save any changes and return to original page.**
- You can replace any photo, up to the submission deadline, if desired.

The monthly competitions allow a single image per category. The photo review session allows up to three images.

New Members

We are happy to welcome these new members:

Ashley Bouheben
Danny Matriccino
Ralph Nordstrom

Monthly Competitions

July Competition Categories

Open Projected (included every month)
Travel (rotating category)

Monthly Topic: Street Photography

Submission Deadline

Before Midnight Monday, July 7

Please keep the judging criteria in mind:

Impact—Impact is the nebulous quality of an emotional response to an image. This subjective aspect of judging should not preempt the composition or technical quality aspects.

Composition—Good composition is a pleasing arrangement of the elements in an image. There are many guidelines for good composition that judges may consider.

Technical Quality—This includes sharpness, focus, color, tonal scale, contrast, appropriate depth of field and other qualities. Consideration is also given for the effect the photographer was trying to achieve such as high key, multiple exposure, or selective focus.

Monthly Topics—The subject matter should be related in some manner to the topic. While there are no formal deductions or penalties, judges may reduce their overall score if they feel the image does not align with the monthly topic. With that said, creative interpretation is encouraged, except in categories with specific rules such as monochrome.

Open Projected—The image must begin as a photograph. From there, it is up to you. Any photograph may be entered in the Open Projected category.

July Competition Groups

Participation in a group is determined by the average of the member's 9 previous LPS competition scores. Here are the groups for the July competition:

Group 5—Dave Clack, Max Coopwood, Robert Huffsmith, Ed Ogle, Laurie Paulik, J.R. Schnelzer, Lisa Schnelzer, Ruth Sprain, Jeff Stephenson

Group 4—Gerald Baumann, Ardeth Carlson, Russell Crawford, Kevin Fettig, Kurt Flock, Jerre Johnson, Dan O'Donnell, Malcolm Patten, Marc Rochkind, Alan Schuppan, Mike Teska, Dave Van Riper, Guy Wagner

Group 3—Jenny Anderson, Kevin Clarke, Tim Hitchcock, Timothy Kathka, Bob McDonnell, Octavio Noda, Josemaria Quera

Group 2—Jim Roode, E. Wayne Snodderly

All other members will compete in Group 1 until the member has 9 submitted images *within a 12-month period* that reach an averaged score for a different group. An individual member's competition group might vary from month to month.

Best of Show and Award of Merit will be given in Groups 2-5. In order to receive an award for a competition, an image must receive a score of 18 or above.

Group Range of 9-Score Averages

Group 5 > 22.3

Group 4 <= 22.3

Group 3 <= 21.3

Group 2 <= 20.0

2025 Monthly Topics

Specific assignments are to be determined on a month-by-month basis and are subject to change. These are the remaining topics for the year, listed alphabetically:

Cityscapes
Fall Spectacular
Long Exposure Photography
Macro Images

*The LPS General Competition Rules are posted on the LPS website under **Competitions>Competition Overview.***

July Monthly Topic: Street Photography

BY ARDETH CARLSON

There are many online sites that address the definition and the how-to of street photography, and there are many opinions about what the genre entails, so here are some guidelines to use specifically for this LPS competition.

The intention of street photography is to capture moments of everyday life. Despite the name of the genre, it is generally recognized that it isn't necessary for the location to be on a street or even in a town. That said, it should not be just a general landscape or cityscape but should reflect human life in a more intimate way.

Although these are candid shots, interaction between the subjects and the photographer is acceptable; it's fine if people are looking at you and reacting. You might capture groups at a rally or demonstration who are in a group and exhibiting their protest signs, or you might see a couple in wedding garb crossing a street, but street photography would not encompass actual wedding photography that is posed specifically for the photographer, for example. Theater performances or rehearsals are probably not considered candid street photography.

Legally, in most states in the U.S. (I am not giving specific legal advice here!) it is permissible to take photographs without asking permission if you are in a public place or a place in which there is no expectation of personal privacy.

That said, it is always a good idea to be aware if you are making someone uncomfortable or even angry. In any situation, a smile can go a long way to avoid confrontation. Walk away when necessary. It is nice to donate a bit of money in the jar when photographing street buskers.

When photographing children who are not related or known to you, it is appropriate to let the accompanying adult notice that you would like to take a photograph so they can let you know if they object.

IMPACT

A street photography image should have a definite subject. Storytelling is very important, and the subject should generate interest or curiosity. There should be something about the image that is compelling and makes the viewer want to take more than a brief glance.

COMPOSITION

Although street photography requires quick reflexes and does not entail careful staging, composition is still important and greatly affects impact. Effective composition can be enhanced by choice of cropping in post processing to eliminate distracting elements and to direct attention to the subject, but thoughtfulness in the shooting process is really more important. Being aware of your surroundings and thinking about the angle at which you will shoot will help you create a composition with an effective background that can also be an important part of the story. Look for an interesting arrangement of lines or colors. Include enough of the setting to tell the story.

TECHNICAL QUALITY

Street photographs can be in either black and white or color but should not be oversaturated to the point of looking unnatural.

The depth of field should be part of your choice of camera settings. Effects such as motion blurring in camera can be part of a good story, but post processing should not be employed to create blurring or artificial bokeh. If there is graininess or noise in the image, it should be a decision of the photographer to enhance the mood of the subject or scene.

Strong contrast and use of light and shadow are important aspects of an image, but there should be sufficient detail in the dark and bright areas to avoid being a distraction.

Look out for odd unidentifiable bits sticking out into the edges of the frame as you decide how to crop your image.

In selecting a photo for the competition, look for all three of the basic elements of an excellent image.

Content guidelines:

- Realistic slice-of-life captures that reflect human life or presence; should not be a general landscape, architecture, or product type of photo. Inclusion of a person or people will usually create a stronger street photography image, but creativity in choice of subject or angle of view makes an image stand out.
- Candid scenes not posed specifically for photographers; eye contact with the photographer is acceptable
- Enough setting to tell a story; do not use macros or extreme close-ups for this competition
- Not required to be on a street or in an urban setting
- Fisheye lenses are not appropriate for this competition
- Do not use intentional camera movement, composites, or multiple exposure for this competition.

Editing guidelines:

- Can be B&W or color; no sepia, toned, or spot color
- Should not be stylized in post processing with artificial-looking filter effects
- No moving or erasing objects in the photo.
- No stylized or double borders; simple small neutral black, white, or gray border is acceptable
- Removal of dust, noise, processing-induced speckles or artifact, and dodging and burning are acceptable in post processing

If you have questions about competition rules or the competition topic, email the competition chair Rob Huffsmith at rhuffsmith2@gmail.com. .

Travel Competition Guidelines

Content guidance:

- If the image is predominantly or exclusively a land-, sea- or cityscape, these “scapes” must include characteristic, distinctive and recognizable physical features, although it is not necessary that the image identify the exact location;
- Images that predominantly or exclusively depict people and their activities must illustrate a distinctive culture of a country, region, or continent;
- Images that predominately or exclusively depict animal populations are allowed, if the animals are in their native environment and are characteristic of that country, region, or continent;
- Portraits or other close-ups of people or objects, in addition to meeting the above paragraphs as applicable, must include elements depicting some of the surrounding environment to make it obvious that the image was not taken in a studio setting;
- Images from events or activities arranged for photography, or of subjects directed or hired for photography, are **NOT** allowed.
- Time exposures are allowed, if they do not dominate the image as a special effect (star trails, for example, are a dominating effect). Highly distorted images such as those produced by fish eye lenses are **NOT** allowed.

Editing guidance:

- Processing or editing must be limited to making the image look as close to the original scene as possible, except that conversion to grayscale monochrome is allowed.

Allowed editing techniques:

- Cropping, straightening and perspective correction.
- Removal or correction of elements added by the camera or lens, such as dust spots, noise,

chromatic aberration and lens distortion.

- Global and selective adjustments such as brightness, hue, saturation and contrast to restore the appearance of the original scene.
- Complete conversion of color images to grayscale monochrome.
- Blending of multiple images of the same subject and combining them in camera or with software (exposure blending or focus stacking);
- Image stitching – combining multiple images with overlapping fields of view that are taken consecutively (panoramas)

Editing techniques that are not allowed:

- Removing, adding to, moving or changing any part of an image, except for cropping and straightening.
- Adding a vignette during processing.
- Blurring parts of the image during processing to hide elements in the original scene.
- Darkening parts of the image during processing to hide elements in the original scene.
- All conversions other than to complete grayscale monochrome.
- Conversion of parts of an image to monochrome, or partial toning, desaturation or over-saturation of color.
- The border of a travel image should not draw attention to itself; it should be narrow and neutral, such as black, white, or gray, and should not be colored, a double border, or stylized.

Invitation to Submit an Article

The newsletter editor is always looking for material that would be of interest to our members for future issues of InFocus. There are many subjects for which you can share your expertise or experiences, such as post-processing techniques, camera equipment, and great locations to shoot. If you aren't confident in your writing ability, the editor will help polish your article for publication. Send your articles, suggestions, or comments to ardeth.carlson@gmail.com.

LPS Judge Qualifications

LPS competitions are judged by a panel of three people who meet the qualifications to critique photos in a knowledgeable manner. This means that judges should have significant experience as a photographer and some familiarity with a variety of photographic genres and/or experience as a photography judge.

It is important for judges to have a good understanding of the elements that comprise a well composed photograph, the ability to recognize aspects of an image that could be improved, and the ability to explain their critiques.

While the judges are most often members of LPS, it is also acceptable to use the services of non-member judges. LPS judges generally critique and score between 50 to 75 photos between Tuesday morning and Thursday at midnight the week before the meeting and need to be available to help break any ties for BOS.

If you are interested in being an LPS judge, contact Rob Huffsmith, the Competition Chair, at rhuffsmith2@gmail.com.

Final determination whether prospective judges meet the required skill set is within the authority of the Competition Chair. Judges who meet the qualifications must go through training that is specific to our club competitions.

Newsletter Cover Challenge!

The newsletter is getting a new face with a full-page photo cover. If you are interested in having one of your images featured in a future newsletter, you can submit a photo approximately 11 x 8.5 inches. The subject should be an interpretation of the month of the newsletter in which it will appear. The most effective image will have the main focal point in the center, since there are text boxes on both sides of the cover. The editor will keep your submissions on file for selection in future issues. Send your photos to ardeth.carlson@gmail.com.

PSA Interclub Competitions

LPS is a member club of the Photographic Society of America and participates in four divisions of interclub competition: Nature, Photojournalism, Print, and Travel. There are three rounds of competition per season, with deadlines on November 15, February 15, and April 15.

LPS members who are interested in having their photos considered for our club's submissions to a PSA interclub competition can contact the LPS rep for more details.

NATURE DIVISION:

Dan O'Donnell, LPS Rep
djod@me.com

Nature Division (ND) image guidelines can be found at <https://psa-photo.org/page/nature>. Dan is looking for images that illustrate an interesting behavior or a unique point of view, not just a landscape or wildlife that is in good focus! Storytelling is an important part of the image. Maximum image size is 1920x1080 pixels.

PHOTOJOURNALISM DIVISION:

Ardeth Carlson, LPS Rep
ardeth.carlson@gmail.com

Information about the Photojournalism Division (PJD) and guidelines for photojournalism images can be found at <https://psa-photo.org/page/photojournalism>. Ardeth is looking for photos that contain informative content and emotional impact, reflecting the human presence in our world. The image should contain a strong visual story. Maximum image size is 1920x1080 pixels.

PICTORIAL PRINT DIVISION:

Lisa Schnelzer, LPS Rep
western-exposure@hotmail.com

The five image categories in the Pictorial Print Division (PPD) are: Small Color, Large Color, Small Monochrome, Large Monochrome, and Creative Altered Reality. For further information regarding submissions, contact Lisa.

TRAVEL DIVISION:

Rich Krebs, LPS Rep
rkrebs318@gmail.com

A definition of a travel photo and a PDF of the Travel Division (PTD) guidelines can be found at <https://psa-photo.org/page/photo-travel>. Rich would like images that show characteristic features of a place or a people. Image size should be a maximum of 1920x1080 pixels.

PSA Interclub Pictorial Print End-of-Year Awards

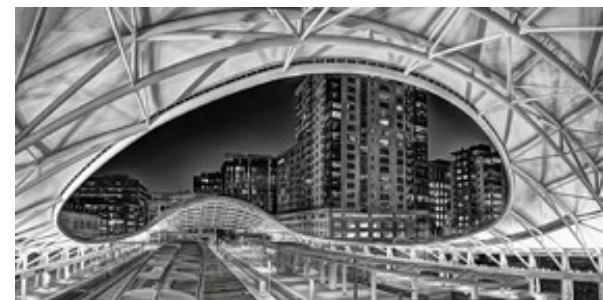
Our club has achieved remarkable success with five of our images winning awards in the PSA Pictorial Print Division Interclub End-of-Year competition. This year, the print division has introduced a Best of Show award selected from the EOY winners to align with the practices of other divisions.

Congratulations to Lisa Schnelzer as the winner of Best of Show for her photo "The Dark Hedges."



Jeff Stephenson received a Bronze medal in Large Color for "Skoga Sunset," a Silver medal in Large Mono for "Imposing," and a Bronze medal in Small Color for "Icelandic Sunset."

J.R. Schnelzer received a Bronze medal in Small Mono for "Union Station Pano."



LPS June Winners

All photos can be viewed on the LPS website under Competition Results. Select a competition and check the box "Display All." Click on an individual photo for an enlarged image and to see critiques, if any. Thank you to the June judges Ardeth Carlson, Kurt Flock, and Mike Teska.



BOS Topic, Group 3
Dave Van Riper

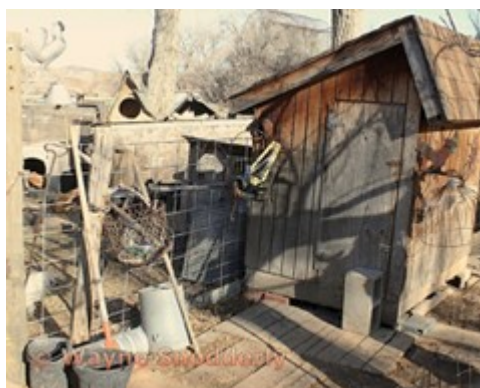


AOM Topic, Group 5
Lisa Schnelzer

AOM Topic, Group 4
Kurt Flock



BOS Topic, Group 5
J.R. Schnelzer



BOS Topic, Group 2
E. Wayne Snodderly



JUNE TOPIC: DOWN ON THE FARM



BOS Topic, Group 4
Robert Huffsmith



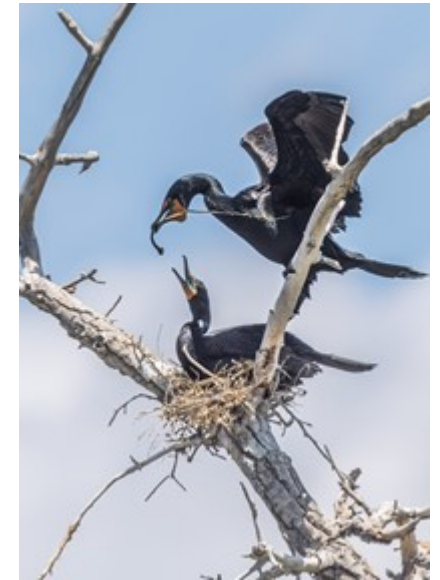
AOM Topic, Group 3
Josemaria Quera



BOS Nature, Group 5
J.R. Schnelzer



BOS Nature, Group 4
Kurt Flock



BOS Nature, Group 3
Dan O'Donnell



AOM Nature, Group 5
Lisa Schnelzer



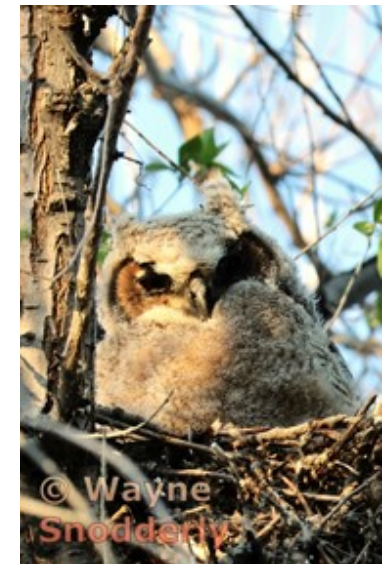
BOS Nature, Group 2
Jim Roode



AOM Nature, Group 4
Jerre Johnson



AOM Nature, Group 3
Dave Van Riper



AOM Nature, Group 2
E. Wayne Snodderly



BOS Open, Group 5
Lisa Schnelzer



BOS Open, Group 4
Gerald Baumann



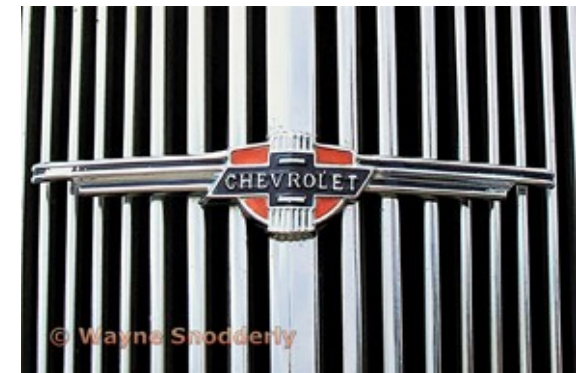
BOS Open, Group 3
Josemaria Quera



AOM Open, Group 5
Max Coopwood



AOM Open, Group 5
J.R. Schnelzer



BOS Open, Group 2
E. Wayne Snodderly



AOM Open, Group 4
Kurt Flock



AOM Open, Group 3
Dave Van Riper

LPS General Competition Rules

[These rules are posted on the LPS website under **Competitions>Image Competition Overview**]

General rules that apply to images submitted for competition are:

1. All images used in competition must be the property of the member and must be photographs or combinations of photographs that were taken by the member. Other photographic material from other sources is not permitted to be used unless specified in a monthly or other special topic.
2. The photographic image may not be a reproduction of another artist's work. The image entered must be the photographer's original work. If another work of art is visible in the photograph, it cannot be the central theme or message of the photograph. If the judges determine the artwork is the central theme, the image will be scored accordingly.
3. All images must begin with a photograph. They may not be totally computer generated.
4. Members may only enter in one level.
5. Images may only be entered once in a given year (except for the year-end competition where they must be entered in the same level and category as originally entered). Images that don't earn an award may be entered again the following year. Images that win any award may not be entered again.
6. Promotions to higher levels are based on a member's average score for their last 9 images during the past 12 months. If a member has less than 9 entries in the past year, their average score calculation will be padded with zeros. A member cannot win an award unless they have at least 9 entries in the past year. Competition level limits will be adjusted each year to avoid having everyone grouped into the same one or two levels.

7. There are five competition levels with 1 being the lowest and 5 being the highest.
8. All members will start out at Level 1, and they can only move up to another level once they have submitted a minimum of 9 images to competitions in the past 12 months.
9. Student members may only enter at Level 1.
10. By entering images in a Loveland Photographic Society competition the photographer gives Loveland Photographic Society non-exclusive right to use the image for purposes related to promotion of the Loveland Photographic Society and for benefit of the members. For example: these images may be used in slide shows or other presentations to the members and to outside parties for the purpose of promoting the Loveland Photographic Society.

LPS Membership

Although LPS welcomes guests to our monthly club meetings, there are benefits to joining as a member. If you like to see how your images fare in competition, you can submit up to 3 photos each month in our club competitions; you also have the opportunity to have an image submitted in the PSA interclub competitions.

The club is also a great place to meet other photographers, get critiques and comments at the Third Monday Review sessions, find photo-op events and activities, and watch the recordings of meeting presentations. You might enjoy initiating meet & shoots or participating in field trips. Your membership dues also fund our annual Youth Showcase.

Dues are \$45 per individual, \$60 per couple.

If you have questions about membership, contact Jen Lammey, the Membership Chair, at jenlammey@gmail.com.

Enter the Larimer County Fair Photo Competition & Exhibition

Members of LPS who are not helping with the check-in process or judging in the Open Class Photography Department competition are welcome to enter their photos. The judges do not see the names of the photographers during the judging.

The competition is divided into 5 divisions:
Children 12 and under
Youth 13-18
Amateur 19-59
Senior Amateur 60+
Advanced 19 and up

The Fair Book contains all the entry rules, classes, and descriptions. Access the 2025 Larimer County Fair Book online at: <https://www.treventscomplex.com/events/larimer-county-fair/4-h-andopen-class>.

To enter up to 3 photos, use the online registration system at <http://lcfopendclass.fairentry.com>. If you are a new exhibitor, please sign up as such and follow the prompts to set you up as an exhibitor. Then add your classes. Be sure to hit the Submit button and receive confirmation of your entries. Pre-registration entry is recommended and runs through Wednesday, July 23. After that time, entries should be made in person at the Open Class Check-In on Tuesday, July 29, from 4-7 PM.

There are no cash prizes for blue, red, and white ribbons, but sponsors have provided prizes for overall Best of Show, Reserve Best of Show, and each age division Champion. Your photos will also be exhibited in The Ranch South Exhibit Hall for the duration of the Larimer County Fair from August 1-5.

If you have comments to share or would like to expand on any articles in InFocus, email the newsletter editor.

Third Monday Photo Review

An excellent way to get feedback on your photos and for experienced photographers to share their knowledge is to participate in the Monday photo review sessions via Zoom on the third Monday of each month. Participants are allowed to submit three photos no later than noon of the session day.

The review is mentored by Mike Wilcox, who welcomes and encourages comments and suggestions by all participants. Many members have reported that they have received a greater knowledge of photo techniques and also found it helpful to see their photos in the eyes of other photographers. Because judges of the monthly competition most often do not have time to offer critiques on all of the competition photos, the Third Monday Review provides that helpful aspect of improving our craft.

You are also welcome to join the meeting and participate in the discussions if you haven't submitted any of your own photos. Click on the link on page 1 of the newsletter to join the Zoom meeting.

Zoom Meeting Attendance Guidelines

LPS is happy to provide an opportunity for members to attend meetings online through Zoom streaming. However, sometimes online attendees forget to turn off the microphone and camera on their own devices; that means everyone watching the presentation can watch you eating, staring, talking to someone else, the hijinks of your cat/dog, and what's going on in your room, and we can hear your phone, your TV, your roommate, your cat/dog...!

When you log into the meeting, please automatically click on the microphone icon and the camera icon so that a red line appears over those indicating they are off. Now you can watch the presentation without everyone also watching you.

Submitting Third Monday Review Photos Into Competition

Several members have noted that they are having difficulty with entering a photo in a monthly competition that has previously been submitted to the Third Monday Review. To do that, the competition image must be selected from your Image Library on the LPS website, not uploaded again from your computer. If you have made changes to your Third Monday photo and want to enter that in the competition, which is allowable, you need to delete the first image from your Image Library before submitting the updated photo in the competition.

Newsletter Index

To find articles in previous issues of the LPS InFocus newsletter, go to the Newsletter Index on the website. To find a specific item, the index shows the year and month of the issue of the newsletter. In order to look at the article in which you are interested, you then need to go back to Newsletters and select the designated issue. The index goes back to 2016

LPS Website Discussion Forums

Log in to www.lps.cc as a member.

🔑 Click on *Discussion Forums*

🔑 You can select any of the headings, such as *Upcoming Photo Opportunities & Events* or *Meet & Shoot*

🔑 Click on *View Topics* to see the posts.

If you would like to receive notifications with the latest posts for that topic, click on the Subscribe button.

The board decided to auto subscribe all members to the Field Trips heading, but if you do not want to receive notifications of those posts, click on Edit Subscription and choose your desired option.

LPS InFocus The e-Newsletter for the Loveland Photographic Society

EDITOR

Ardeth Carlson

ardeth.carlson@gmail.com

Newsletter issues available at
<https://www.lps.cc>

LPS Speaker Recordings

Most meeting presentations have been recorded for viewing by members only. You can find links to the videos on the LPS website; go to **Membership>Resource Links>Videos**. Please *do not share* these links with non-members unless they are marked as shareable in the list.



Our Facebook group **Members of Loveland Photographic Society** provides information on club meetings and events and is a place to share your photos and initiate conversation about photography topics that interest you. You must be a current member to join the group.

JOIN THE CLUB

If you are reading this newsletter as a non-member and would like to join the Loveland Photographic Society, go to the main page on the www.lps.cc website and click on **Membership > Join or Renew**. Annual dues are \$45 or \$60 per couple. Membership dues may be paid by credit card online, mailed to the P.O. box address on page 3, or by cash or a check made out to Loveland Photographic Society and given to the LPS treasurer.