

LPS InFocus

Loveland Photographic Society
Monthly Newsletter

June 2025

Creative Smartphone Photography Presentation by Charles & Melissa Needle

BY ARDETH CARLSON

Charles and Melissa (Missy) Needle, husband-and-wife Colorado-based fine art photographers, will be co-presenters at our June meeting, sharing techniques for using your smartphone camera.

Learn how making images with your mobile phone can make you a better photographer and how various apps can enable you to craft creative, expressive images in this “beyond the basics” smartphone photography presentation.

Charles & Missy will begin by briefly touching upon some of the hidden native camera features in an iPhone, as well as a few helpful accessories and workflow/printing considerations. Then they will discuss key shooting and editing apps, such as Snapseed by Google (free for iPhone and Android devices), Camera+ 2, Average Cam Pro, Slow Shutter Cam, Artista Impresso, Macro+, Distressed FX Plus, Image Blender and more. You'll come away from this jam-packed session with new knowledge that will empower you to make images you never imagined possible with a smartphone!

Although this presentation is primarily geared toward iPhone users, you can certainly participate if you own an Android phone. Many of the apps Charles and Missy will discuss are only available for iOS devices; however, you can often find an equivalent in the Google Play Store, and they will mention the names of these apps whenever possible.

The meeting begins at 6:30 PM at the Trinity United Methodist Church, 801 Cleveland Avenue, Loveland. Parking is available at the church, and the meeting is held in the fellowship hall in the lower level. There is also a link on this page of the newsletter if you wish to view the competition slideshow and the presentation via Zoom.

If you are unable to watch the presentation on June 9, Charles has given us permission to post the recording on our website until June 16.



Ardeth Carlson

Club Meetings

Monthly club meetings are hybrid in-person plus Zoom; the Third Monday Review session is online only. *No pass code is needed for the online meetings*

Monday, June 9

Monthly Club Meeting

Trinity United Methodist Church
801 Cleveland Avenue, Loveland

Social time 6:00 PM

Meeting 6:30–8:30 PM

[https://us06web.zoom.us/](https://us06web.zoom.us/j/93226580276?pwd=eWxtbVYzTGpWbWlYY3lscGNwbWZRdz09)

[j/93226580276?](https://us06web.zoom.us/j/93226580276?pwd=eWxtbVYzTGpWbWlYY3lscGNwbWZRdz09)

[pwd=eWxtbVYzTGpWbWlYY3lscGNwbWZRdz09](https://us06web.zoom.us/j/93226580276?pwd=eWxtbVYzTGpWbWlYY3lscGNwbWZRdz09)

Monday, June 16

Third Monday Photo Review

6:30–8:30 PM

[https://us06web.zoom.us/](https://us06web.zoom.us/j/95087721084?pwd=eXlMndWenQyaCt6WUV6RmpeniWdz09)

[j/95087721084?](https://us06web.zoom.us/j/95087721084?pwd=eXlMndWenQyaCt6WUV6RmpeniWdz09)

[pwd=eXlMndWenQyaCt6WUV6RmpeniWdz09](https://us06web.zoom.us/j/95087721084?pwd=eXlMndWenQyaCt6WUV6RmpeniWdz09)

Tuesday, July 1

LPS Board Meeting

Perkins Restaurant
2222 W. Eisenhower, Loveland

6:30 PM

Open to All

The LPS Board meetings are open to all members. If you are interested in seeing how your leadership team tends to club business, you are welcome to attend, although only Board members can vote.

Presenter Bios:

Charles has led photography workshops and tours in the U.S., Canada, and Europe for the past 25 years, many with exclusive, private access. In addition, he has authored three cutting-edge instructional books: *Tiny Worlds: Creative Macro Photography Skills*, *Impressionistic Photography: A Field Guide to Using Your Camera as a Paintbrush*, and *Creative Macro Photography: Professional Tips & Techniques*.

He is a North American Nature Photography Association (NANPA) Showcase Award winner for 17 years in a row and placed in the Top Ten and Top 26 image categories for two of those years. In 2024, he made the shortlist for the Close-up Photographer of the Year international contest.

Melissa has assisted Charles in workshops, classes and online teaching sessions since 2016. She enjoys literal image making but really loves exploring her creative side with various post-processing methods. She is a full-time professional photographer whose journey began at the age of 12 with the family camera. Her career has blossomed into a passion she enjoys, having presented at numerous camera clubs and conferences.

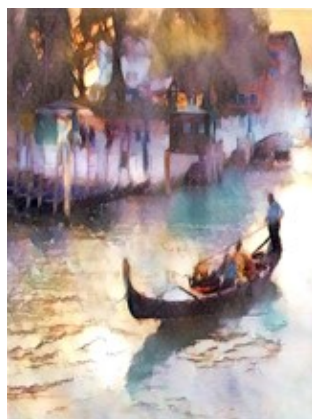
Melissa has received numerous awards and honors over the past 33 years. Some of her notable awards include: Gold Key and Blue Ribbon awards from The Boston Globe Art Show, cover features in *Cape Cod Guide* magazine, MUSC Humanitas, Neuroscience, and Cancer Research, and recognition in the Mobile Photography Awards Contest and NANPA Showcase Competition, where she won a prestigious Top 24 Image Award in 2020. In addition, Melissa's work was selected to appear in three books: *Charleston: A Photographic Portrait*, *Savannah: A Photographic Portrait*, and *Massachusetts: A Photographic Portrait*. She currently leads the Greater Lynn Photographic Association (MA) smartphone specialty group and was awarded the title MNEC, Master Member of NECCC in 2022.



Photos by
Charles Needle



Photos by
Melissa Needle



Best Senior Award Winner Recognized

At the May LPS meeting, Adria Smith was recognized as the winner of the Best Senior Award for the 2025 LPS Youth Showcase. Adria received two \$25 Jax gift cards for her 1st place photos in the Color Choice and Landscape categories in digital photography. As the Best Senior Award winner, Adria also received a check for \$250 from LPS.

Julie Smith, Adria's mother, thanked LPS for their support of high school students and their photography:

"Thank you for allowing youth all over our region to showcase their photography skills and for your organization's support of the art of photography in our youth. What a gift to Northern Colorado!"



Ruth Sprain, Chairman of the LPS Youth Showcase Committee, presents the Best Senior Award to Adria Smith.

From the Board of Directors

LPS Officer Openings for 2026

It's not too early to begin thinking about the November election of LPS officers for next year. The current secretary, Jerre Johnson, is willing to serve in that capacity again. There will be a need for a new president and vice president, as current VP Malcolm Patten wishes not to assume the office of president and prefers to remain as our projectionist. Treasurer Jen Lammey, who has served for two years, will also be stepping aside from that role, although we do have a member who is considering taking on that office.

The main responsibility of the president is to preside over the club and board meetings and to be the point person for issues that arise in the club, working together with the other Board members.

The vice president presides over meetings in the absence of the president and assumes the duties of the president should he or she need to step aside. Generally the vice president becomes familiar with the business of the club and then assumes the office of president the following year, but that is not a requirement.

If you are interested in running for any of the elected offices or would like more information, speak to any member of the board or email President Rich Krebs at rkrebs318@gmail.com.

Join the 2026 Program Committee

The Program Committee is composed of three members who work together to schedule presentations and activities at the LPS monthly meetings. Two new members are needed to join the committee beginning in January 2026.

It is helpful for committee members to have some contacts with photographers who can make effective presentations to our meeting. Also, members who have ideas about making our monthly meetings relevant and interesting are encouraged to speak to Tim Kathka, Ardeth Carlson, or Rich Krebs for more information or to volunteer to join the committee next year.

Volunteers Needed for County Fair Open Class Photography Division

For the third year, LPS will be responsible for managing the Open Class Photography competition at the Larimer County Fair. Ardeth Carlson is serving as the department supervisor and will be looking for volunteers to staff the check-in table, judge the competition, and hang the images for exhibition during the fair.

The date of entry check-in is Tuesday, July 29, between 4:00 and 7:00 PM. Two volunteers are needed for the check-in process and 2-3 to attach the hang tags and move the photos into stacks.

Judging will take place on Wednesday morning, July 30, from 8:00 AM to noon. 10 judges will work in teams of 2 to select blue, red, and white ribbon winners in each category; judges write very brief comments, but photos are not given a score.

Additional volunteers are needed on Wednesday afternoon to hang the photos; in 2024, there were 240 entries. Please contact Ardeth at ardeth.carlson@gmail.com to volunteer for any of these tasks or for more information.

Editor's Challenge!

A new feature of the InFocus newsletter is the inclusion each month of a narrow side panel on the cover that is filled with a photo that reflects that particular month. This is open for submissions by club members for July through December. Photos should be 6 inches x 1.25 inches and can be any interpretation of the newsletter month. It can also utilize any color palette, and the footer color fill will be changed to coordinate! The editor may also include other interesting slice-of-life photos within the newsletter. Send your photos to ardeth.carlson@gmail.com.

Meeting Recordings Posted

In cleaning up the number of meeting videos LPS had remaining in our Zoom account, it was discovered that the recordings for January-May 2024 had not been added to our website. This has now been accomplished. To view all videos, go to **Membership>Resource Links>Videos**. To honor the request of our presenters, please do not share the links to our video resources with non-members.

LPS Board of Directors

ELECTED OFFICERS

PRESIDENT
— RICH KREBS
VICE PRESIDENT
— MALCOLM PATTEN
TREASURER/MEMBERSHIP
— JEN LAMMEY
SECRETARY
JERRE JOHNSON

CHAIRPERSONS

PROGRAMS
—TIM KATHKA
—RICH KREBS
— ARDETH CARLSON
COMPETITION
— ROB HUFFSMITH
WEBMASTER
MIKE TESKA
PROJECTIONIST
— MALCOLM PATTEN
MENTOR
—MIKE WILCOX
PSA REPRESENTATIVE
—LISA SCHNELZER
SCHOLARSHIPS
— RUTH SPRAIN
NEWSLETTER
—ARDETH CARLSON
FIELD TRIPS
—JIM ROODE
PUBLICITY
—KEVIN FETTIG
FORUM DIRECTOR
—INGRID JACOBSON
GREETING HOST
—BILL LUNDQUIST

Mailing Address

P. O. Box 7604
Loveland, CO 80537

Members-Only Facebook Group

<https://www.facebook.com/groups/237033251716/>

Public Facebook Page

<https://www.facebook.com/LovelandPhotographicSociety/>

Competition Corner

Submitting Pictures for Competition or the Photo Review Session

- Log on to the LPS website
- Mouse over the **Competitions** dropdown on the Home Page.
- Select **Submit images to a Competition**
- Select the Competition category or the Third Monday Photo Review
- At the bottom of the screen, click on **Upload images into the Competition**.
- Then click on the button **Select** which will open a window on your computer to select an image.
- Click on **Save Images and Proceed to Edit Page**.
- Type in a title and click on **Save any changes and return to original page**.
- You can replace any photo, up to the submission deadline, if desired.

The monthly competitions allow a single image per category. The photo review session allows up to three images.

The general rules of the LPS competition are posted on the website under Competitions>Image Competition Overview and also on page 10 of the LPS InFocus newsletter.

Questions? Ask the Competition Chair Rob Huffsmith at rhuffsmith2@gmail.com.

Monthly Competitions

Competition Categories

Open Projected (included every month)
Nature (rotating category)
Monthly Topic: Down on the Farm

Submission Deadline

Before Midnight Monday, June 2

Please keep the judging criteria in mind:

Impact—Impact is the nebulous quality of an emotional response to an image. This subjective aspect of judging should not preempt the composition or technical quality aspects.

Composition—Good composition is a pleasing arrangement of the elements in an image. There are many guidelines for good composition that judges may consider.

Technical Quality—This includes sharpness, focus, color, tonal scale, contrast, appropriate depth of field and other qualities. Consideration is also given for the effect the photographer was trying to achieve such as high key, multiple exposure, or selective focus.

Monthly Topics—The subject matter should be related in some manner to the topic. While there are no formal deductions or penalties, judges may reduce their overall score if they feel the image does not align with the monthly topic. With that said, creative interpretation is encouraged, except in categories with specific rules such as monochrome.

Open Projected—The image must begin as a photograph. From there, it is up to you. Any photograph may be entered in the Open Projected category.

June Competition Groups

Participation in a group is determined by the average of the member's 9 previous LPS competition scores. Here are the groups for the June competition:

Group 5—Dave Clack, Max Coopwood, Ed Ogle, J.R. Schnelzer, Lisa Schnelzer, Ruth Sprain, Jeff Stephenson

Group 4—Gerald Baumann, Ardeth Carlson, Russell Crawford, Kevin Fettig, Rob Huffsmith, Jerre Johnson, Dan O'Donnell, Malcolm Patten, Laurie Paulik, Alan Schuppan, Mike Teska, Guy Wagner

Group 3—Jenny Anderson, Kevin Clarke, Kurt Flock, Tim Hitchcock, Tim Kathka, Bob McDonnell, Octavio Noda, Josemaria Quera, Marc Rochkind, Dave Van Riper

Group 2—Jim Roode, Wayne Snodderly

All other members will compete in Group 1 until the member has 9 submitted images *within a 12-month period* that reach an averaged score for a different group. An individual member's competition group might vary from month to month.

Best of Show and Award of Merit will be given in Groups 2-5. In order to receive an award for a competition, an image must receive a score of 18 or above.

Group Range of 9-Score Averages

Group 5 > 22.3

Group 4 <= 22.3

Group 3 <= 21.3

Group 2 <= 20.0

Group 1 <= 18.6

2025 Monthly Topics

Specific assignments are to be determined on a month-by-month basis and are subject to change. These are the remaining topics for the year, listed alphabetically:

Cityscapes
Fall Spectacular
Long Exposure Photography
Macro Images
Street Photography

Nature Competition Guidelines

[Posted on the LPS website, **Competitions>PSA Interclub Image Competitions>PSA Guidelines for Nature Competition**]

Content Guidelines

Nature photography records all branches of natural history except anthropology and archaeology. This includes all aspects of the physical world, both animate and inanimate, that have not been made or modified by humans.

- Nature images must convey the truth of the scene that was photographed. A well-informed person should be able to identify the subject of the image and be satisfied that it has been presented honestly and that no unethical practices have been used to control the subject or capture the image. Images that directly or indirectly show any human activity that threatens the life or welfare of a living organism are not allowed.
- The most important part of a Nature image is the nature story it tells. High technical standards are expected and the image must look natural. Objects created by humans, and evidence of human activity, are allowed in Nature images only when they are a necessary part of the Nature story.
- Photographs of human-created hybrid plants, cultivated plants, feral animals, domesticated animals, human-created hybrid animals and mounted or preserved zoological specimens are not allowed.
- Images taken with subjects under controlled conditions, such as zoos, are allowed.
- Controlling live subjects by chilling, anaesthetic or any other method of restricting natural movement for the purpose of a photograph is not allowed.

Editing Guidelines

Processing or editing must be limited to making the image look as close to the original scene as possible, except that conversion to grayscale monochrome is allowed.

Allowed editing techniques:

- Cropping, straightening and perspective correction.
- Removal or correction of elements added by the camera or lens, such as dust spots, noise, chromatic aberration and lens distortion.
- Global and selective adjustments such as brightness, hue, saturation and contrast to restore the appearance of the original scene.
- Complete conversion of color images to grayscale monochrome.
- Blending of multiple images of the same subject and combining them in camera or with software (exposure blending or focus stacking);
- Image stitching – combining multiple images with overlapping fields of view that are taken consecutively (panoramas);

Editing techniques that are not allowed:

- Removing, adding to, moving or changing any part of an image, except for cropping and straightening.
- Adding a vignette during processing.
- Blurring parts of the image during processing to hide elements in the original scene.
- Darkening parts of the image during processing to hide elements in the original scene.
- All conversions other than to complete grayscale monochrome.
- Conversion of parts of an image to monochrome, or partial toning, desaturation or over-saturation of color

EDITOR'S NOTE:

To be clear, the guidelines for Levels listed in the March issue give PSA judges suggestions for awarding images in nature competition, if other aspects of the images are equal in quality.

These judging guidelines listed types of photos from Level 1, a single animal, to Level 4, an interaction between mixed species. To clarify, generally speaking, a photo of a single animal in a static position, i.e. a portrait type image of the animal which is not engaging in any kind of activity, might receive a lower score than a photo of one species of animal chasing or eating an animal of a different species.

However, the photos are still judged based on all aspects of each photo, evaluating all of the other elements of composition, technical quality, lighting, color tone, etc. Thus a photo of a single animal might still receive an award because of the excellence of the photo, and a photo of interspecies interaction might not receive an award if that photo is not as successful in meeting the other criteria.

Monthly Topic: Down on the Farm

The June monthly topic is an open category, accepting realistic or stylized images and both color or black and white images. The theme is open to interpretation by the photographer, but the competition photographs should definitely reflect aspects of being on a farm. Many types of farm life can be depicted, such as animals, crops, equipment, daily chores, buildings and fences, or even farmers!

LPS Competition Rules

As we continue to add new members to LPS, it is not always easy to find helpful guidelines and rules that are located within our website. For those who are interested in participating in the monthly competitions, the general rules for submitted images are found in **Competitions>Image Competition Overview**. They will now also be included in the back pages of the newsletter.

LPS May Winners

All photos can be viewed on the LPS website under Competition Results. Select a competition and check the box "Display All." Click on an individual photo for an enlarged image and to see critiques, if any. Thank you to the May judges Dave Clack, Dan O'Donnell, and Mike Teska.



BOS Topic, Group 3
Kurt Flock



AOM Topic, Group 5
J.R. Schnelzer



BOS Topic, Group 5
Dave Clack

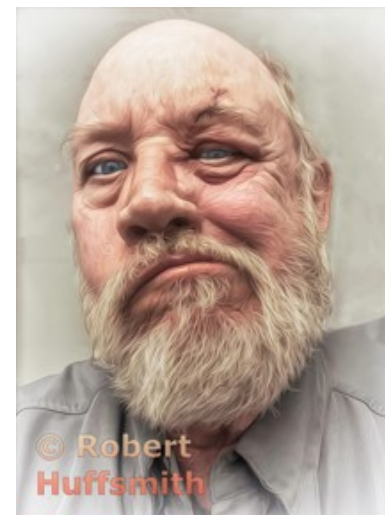


BOS Topic, Group 2
Jim Roode



AOM Topic, Group 4
Gerald Baumann

MAY TOPIC: FOCUS ON FACES



BOS Topic, Group 4
Robert Huffsmith



AOM Topic, Group 3
Tim Kathka



BOS Monochrome, Group 5
Lisa Schnelzer



BOS Monochrome, Group 4
Russell Crawford



BOS Monochrome, Group 3
Marc Rochkind



AOM Monochrome, Group 5
Dave Clack



AOM Monochrome, Group 4
Robert Huffsmith



AOM Monochrome Group 3
Tim Kathka



BOS Open, Group 5
Ruth Sprain



BOS Open, Group 4
Laurie Paulik



AOM Open, Group 5
J.R. Schnelzer



BOS Open, Group 3
Dave Van Riper



BOS Open, Group 2
Wayne Snodderly



AOM Open, Group 4
Robert Huffsmith



AOM Open, Group 3
Kurt Flock

PSA Interclub Competitions

LPS is a member club of the Photographic Society of America and participates in four divisions of interclub competition: Nature, Photojournalism, Print, and Travel. There are three rounds of competition per season, with deadlines on November 15, February 15, and April 15.

LPS members who are interested in having their photos considered for our club's submissions to a PSA interclub competition can contact the LPS rep for more details.

NATURE DIVISION:

Dan O'Donnell, LPS Rep
djod@me.com

Nature Division (ND) image guidelines can be found at <https://psa-photo.org/page/nature>. Dan is looking for images that illustrate an interesting behavior or a unique point of view, not just a landscape or wildlife that is in good focus! Storytelling is an important part of the image. Maximum image size is 1920x1080 pixels.

PHOTOJOURNALISM DIVISION:

Ardeth Carlson, LPS Rep
ardeth.carlson@gmail.com

Information about the Photojournalism Division (PJD) and guidelines for photojournalism images can be found at <https://psa-photo.org/page/photojournalism>. Ardeth is looking for photos that contain informative content and emotional impact, reflecting the human presence in our world. The image should contain a strong visual story. Maximum image size is 1920x1080 pixels.

PICTORIAL PRINT DIVISION:

Lisa Schnelzer, LPS Rep
western-exposure@hotmail.com

The five image categories in the Pictorial Print Division (PPD) are: Small Color, Large Color, Small Monochrome, Large Monochrome, and Creative Altered Reality. For further information regarding submissions, contact Lisa.

TRAVEL DIVISION:

Rich Krebs, LPS Rep
rkrebs318@gmail.com

A definition of a travel photo and a PDF of the Travel Division (PTD) guidelines can be found at <https://psa-photo.org/page/photo-travel>. Rich would like images that show characteristic features of a place or a people. Image size should be a

PSA Interclub Competitions 2024-2025

The results of LPS club entries are in for Round 3 of the PSA interclub competitions along with the final club rankings for the competition year.

In the Nature Division, while not receiving awards in Round 3, LPS was ranked 17th of 25 participating clubs.

In the Photojournalism Division in Round 3, congratulations to Lisa Schnelzer, for an Honorable Mention award for her image "Cutting Stone." The LPS season ranking was 8th of 18 clubs.

In Pictorial Print Division, Round 3, congratulations to LPS members who won awards:

2nd, Large Color, Jeff Stephenson, "Holiday Lights"
HM, Large Mono, J.R. Schnelzer,
"Queen of the Nile"

HM, Large Mono, Lisa Schnelzer,
"The Dark Hedges"

HM, Small Color, Jeff Stephenson,
"Icelandic Sunset"

3rd, Small Mono, Lisa Schnelzer, "Ribbon Dance"
Season rankings:

Large Color, 9th of 10

Large Monochrome, 9th of 10

Small Color, 13th of 14

Small Monochrome, 11th of 13

In the Travel Division, Round 3, two members received awards:

Merit, Dan O'Donnell, "Far Materre, Paris"

HM, J.R. Schnelzer, "Military Exercise"

For the season, LPS ranked 13th of 25.

LPS Showcase Winners in PSA Youth Showcase

Two Northern Colorado high school students sponsored by LPS won awards in the PSA Youth Showcase. Chloe Carmichael from Mountain View High School received 3rd place for her photo "Vibrance" in the Architecture category for print photography. Jesse Lewis from Monarch High School received an Honorable Mention for his print "Under the Lights" in the Color Choice category.

Eleven students sponsored by LPS received an Acceptance for their photos. An Acceptance means that the photo will be displayed at the PSA Photo Festival in Portland, Oregon, from September 24-27, 2025, along with the award winners. Those students are:

Architecture, Print:

Nick Harding, Frederick, "Ascending"

Architecture, Projected:

Chloe Carmichael, Mountain View,
"Descent"

Color Choice, Projected:

Adria Smith, Loveland, "Roses"

Abe Adamson, Boulder, "Pourquoi Pas?"

Photojournalism, Print:

Sagan Randall, Boulder, "Hush Hour"

Porter Hahn, Monarch, "I've got a great
idea, Bro"

Photojournalism, Projected:

Halle Stapleton, Windsor H.S., "The Grind"

Portrait, Print:

Angela Burgess, Boulder, "See"

Jesse Lewis, Monarch, "Brooklyn"

Scapes, Projected:

Adria Smith, Loveland H.S., "Medicine Bow
Milky Way"

Annie Agone, Windsor H.S., "Skipping
to Paradise"

All of these photos were published in the May issue of the LPS InFocus newsletter.

LPS General Competition Rules

[These rules are posted on the LPS website under **Image Competition Overview**]

General rules that apply to images submitted for competition are:

1. All images used in competition must be the property of the member and must be photographs or combinations of photographs that were taken by the member. Other photographic material from other sources is not permitted to be used unless specified in a monthly or other special topic.
2. The photographic image may not be a reproduction of another artist's work. The image entered must be the photographer's original work. If another work of art is visible in the photograph, it cannot be the central theme or message of the photograph. If the judges determine the artwork is the central theme, the image will be scored accordingly.
3. All images must begin with a photograph. They may not be totally computer generated.
4. Members may only enter in one level.
5. Images may only be entered once in a given year (except for the year-end competition where they must be entered in the same level and category as originally entered). Images that don't earn an award may be entered again the following year. Images that win any award may not be entered again.
6. Promotions to higher levels are based on a member's average score for their last 9 images during the past 12 months. If a member has less than 9 entries in the past year, their average score calculation will be padded with zeros. A member cannot win an award unless they have at least 9 entries in the past year. Competition level limits will be adjusted each year to avoid having everyone grouped into the same one or two levels.

7. There are five competition levels with 1 being the lowest and 5 being the highest.
8. All members will start out at Level 1, and they can only move up to another level once they have submitted a minimum of 9 images to competitions in the past 12 months.
9. Student members may only enter at Level 1.
10. By entering images in a Loveland Photographic Society competition the photographer gives Loveland Photographic Society non-exclusive right to use the image for purposes related to promotion of the Loveland Photographic Society and for benefit of the members. For example: these images may be used in slide shows or other presentations to the members and to outside parties for the purpose of promoting the Loveland Photographic Society.

Enter Larimer County Fair Photo Competition & Exhibition

Members of LPS who are not helping with the check-in process or judging in the Open Class Photography Department competition are welcome to enter their photos. The judges do not see the names of the photographers during the judging.

The Fair Book contains all the entry guidelines, classes, and descriptions. Access the 2025 Larimer County Fair Book online at: <https://www.treventscomplex.com/events/larimer-county-fair/4-h-andopen-class>.

To enter up to 3 photos, use the online registration system at <http://lcfopenclass.fairentry.com>. If you are a new exhibitor, please sign up as such and follow the prompts to set you up as an exhibitor. Then add your classes. Be sure to hit the Submit button and receive confirmation of your entries. Pre-registration entry is recommended and runs through Wednesday, July 23. After that time, entries should be made in person at the Open Class Check-In on Tuesday, July 29.

LPS Judge Qualifications

LPS competitions are judged by a panel of three people who meet the qualifications to critique photos in a knowledgeable manner. This means that judges should have significant experience as a photographer and some familiarity with a variety of photographic genres and/or experience as a photography judge.

It is important for judges to have a good understanding of the elements that comprise a well composed photograph, the ability to recognize aspects of an image that could be improved, and the ability to explain their critiques.

While the judges are most often members of LPS, it is also acceptable to use the services of non-member judges. LPS judges generally critique and score between 50 to 75 photos between Tuesday morning and Thursday at midnight and need to be available to help break any ties for BOS.

If you are interested in being an LPS judge, contact Rob Huffsmith, the Competition Chair, at rhuffsmith2@gmail.com.

Final determination whether prospective judges meet the required skill set is within the authority of the Competition Chair. Judges who meet the qualifications must go through training that is specific to our club competitions.

Invitation to Submit an Article

The newsletter editor is always looking for material that would be of interest to our members for future issues of InFocus. There are many subjects for which you can share your expertise or experiences, such as post-processing techniques, camera equipment, and great locations to shoot. If you aren't confident in your writing ability, the editor will help polish your article for publication. Send your articles, suggestions, or comments to ardeth.carlson@gmail.com.

Third Monday Photo Review

An excellent way to get feedback on your photos and for experienced photographers to share their knowledge is to participate in the Monday photo review sessions via Zoom on the third Monday of each month. Participants are allowed to submit three photos no later than noon of the session day.

The review is mentored by Mike Wilcox, who welcomes and encourages comments and suggestions by all participants. Many members have reported that they have received a greater knowledge of photo techniques and also found it helpful to see their photos in the eyes of other photographers. Because judges of the monthly competition most often do not have time to offer critiques on all of the competition photos, the Third Monday Review provides that helpful aspect of improving our craft.

You are also welcome to join the meeting and participate in the discussions if you haven't submitted any of your own photos. Click on the link on page 1 of the newsletter to join the Zoom meeting.

Zoom Meeting Attendance Guidelines

LPS is happy to provide an opportunity for members to attend meetings online through Zoom streaming. However, sometimes online attendees forget to turn off the microphone and camera on their own devices; that means everyone watching the presentation can watch you eating, staring, talking to someone else, the hijinks of your cat/dog, and what's going on in your room, and we can hear your phone, your TV, your roommate, your cat/dog...!

When you log into the meeting, please automatically click on the microphone icon and the camera icon so that a red line appears over those indicating they are off. Now you can watch the presentation without everyone also watching you.

Submitting Third Monday Review Photos Into Competition

Several members have noted that they are having difficulty with entering a photo in a monthly competition that has previously been submitted to the Third Monday Review. To do that, the competition image must be selected from your Image Library on the LPS website, not uploaded again from your computer. If you have made changes to your Third Monday photo and want to enter that in the competition, which is allowable, you need to delete the first image from your Image Library before submitting the updated photo in the competition.

Newsletter Index

To find articles in previous issues of the LPS InFocus newsletter, go to the Newsletter Index on the website. To find a specific item, the index shows the year and month of the issue of the newsletter. In order to look at the article in which you are interested, you then need to go back to Newsletters and select the designated issue. The index goes back to 2016

LPS Website Discussion Forums

Log in to www.lps.cc as a member.

🔑 Click on *Discussion Forums*

🔑 You can select any of the headings, such as *Upcoming Photo Opportunities & Events* or *Meet & Shoot*

🔑 Click on *View Topics* to see the posts.

If you would like to receive notifications with the latest posts for that topic, click on the Subscribe button.

The board decided to auto subscribe all members to the Field Trips heading, but if you do not want to receive notifications of those posts, click on Edit Subscription and choose your desired option.

LPS InFocus The e-Newsletter for the Loveland Photographic Society

EDITOR

Ardeth Carlson

ardeth.carlson@gmail.com

Newsletter issues available at
<https://www.lps.cc>

LPS Speaker Recordings

Most meeting presentations have been recorded for viewing by members only. You can find links to the videos on the LPS website; go to **Membership>Resource Links>Videos**. Please *do not share* these links with non-members unless they are marked as shareable in the list.



Our Facebook group **Members of Loveland Photographic Society** provides information on club meetings and events and is a place to share your photos and initiate conversation about photography topics that interest you. You must be a current member to join the group.

JOIN THE CLUB

If you are reading this newsletter as a non-member and would like to join the Loveland Photographic Society, go to the main page on the www.lps.cc website and click on **Membership > Join or Renew**. Annual dues are \$45 or \$60 per couple. Membership dues may be paid by credit card online, mailed to the P.O. box address on page 2, or by cash or a check made out to Loveland Photographic Society and given to the LPS treasurer.