

## Club Meetings

**Saturday, June 8**

**Photo Bull Session**

Daz Bog Coffee Shop

[556 Lincoln](#)

Loveland, CO

8:30–10 :30 AM

**Monday, June 10**

**Monthly Club Meeting**

Group Publishing

[1515 Cascade Avenue](#)

Loveland, Colorado

**Social Hour**

5:30-6:30 PM

**Club Meeting**

6:30-9:30 PM

**Monday, June 17**

**Photo Review Session**

Loveland Library

Gertrude Scott Room

[300 Adams Avenue](#)

Loveland, CO

6:00-8:00 PM

## June Meeting Agenda

# What Makes a Winning Photo?



*Viewing the Cloister by Ruth Sprain*



*Fisherman's Cottages by J.R. Schnelzer*



*Raptor by Kurt Flock*

**BY JEANIE SUMRALL-AJERO**

[PROGRAMS@LPS.CC](mailto:PROGRAMS@LPS.CC)

Among the feedback in our recent survey there were many comments indicating a desire to better understand the LPS photo competition and the judging process in particular. This month's presentation will feature:

- A discussion of the different categories in the LPS Photo Competition.
- An overview of the judging process including the various elements considered and how to handle personal bias.
- A panel discussion with three of our experienced LPS judges to explain their approach the judging process.
- Tips for learning to use a discriminating eye to select your own best photos.

— Continued on Next Page —

## LPS Board of Directors

[PRESIDENT](#)

— KURT FLOCK

[VICE PRESIDENT](#)

— KEVIN FETTIG

[TREASURER](#)

— SANDY LOUCKS

[SECRETARY](#)

— SCOTT SPRAIN

[PAST PRESIDENT](#)

— TONY PARISO

[PROGRAMS](#)

— JEANIE SUMRALL-AJERO

[MEMBERSHIP](#)

— SANDY LOUCKS

[COMPETITION](#)

— LORIE SMITH

## LPS Officers

[FIELD TRIPS](#)

— LYNNE LEWIS

[GREETING HOSTS](#)

— JAMIE CARRIER

& INGRID JACOBSON

[MENTOR](#)

— MIKE WILCOX

[PROJECTIONIST](#)

OCTAVIO NODA

& MIKE WILCOX

[FORUM DIRECTOR](#)

— INGRID JACOBSON

[PUBLICITY](#)

— OPEN

[SCHOLARSHIPS](#)

— RUTH SPRAIN

[NEWSLETTER/WEBMASTER](#)

— BILL SHANAHAN

[PSA REPRESENTATIVE](#)

— LISA SCHNELZER

[FACILITY SETUP](#)

— JEANIE SUMRALL-AJERO

# InFocus

The e-Newsletter for the  
Loveland Photographic Society

## Mailing Address

P. O. Box 7604 • Loveland, CO 80537

## Public Facebook Page

[https://www.facebook.com/  
LovelandPhotographicSociety/](https://www.facebook.com/LovelandPhotographicSociety/)

## Members Only Facebook Group

[https://www.facebook.com/  
groups/237033251716/](https://www.facebook.com/groups/237033251716/)

## Submitting Pictures for the Monthly Competition or Photo Review Session

- Log on to the LPS.CC website
- Mouse over the Competitions dropdown on the Home Page.
- Select menu item:  
**Submit images to a Competition**
- Select the Competition or the Third Monday Photo Review
- Click the **Select** button on the Left side.
- At the bottom of the screen, click on **Upload images into the Competition.**
- Then click on the button **Select** which will open a window on your computer to select images.
- Click on **Save Images**

The monthly competitions allow a single image per competition.

The photo review session allows up to three images — title the images with the letters A, B and C followed by your last name. This will allow us to limit the number of images if it is necessary.



MEMBER  
ORGANIZATION



## Fireside Café Closing for LPS Meetings

BY KURT FLOCK

[PRESIDENT@LPS.CC](mailto:PRESIDENT@LPS.CC)

The staff of the Fireside Café at Group Publishing has decided that it is not financially viable for them to continue serving to LPS members at it's monthly meetings. Please plan accordingly. We still plan to have social time before the meeting starts.

The following is the e-mail received from them:

*The Fireside Café can no longer bring staff in to cover the café for individual purchases. It does not make financial sense to bring staff in to cover when we don't bring in enough revenue. With that being said, I can make a Pot of coffee 1-Regular, 1-De Caf, a big container of water and some pre-packaged cookies, we can have a container that people can put money in if they want those items. Coffee — 12oz cup \$2.00, Cookie \$2.00 We can see how this goes for a couple months to see if it's worth doing. Thank you for your understanding.*

— Chef Kristin

## Join the Club!

If you are reading the newsletter as a non-member and would like to join the Loveland Photographic Society, go to the main page on the LPS.CC website and click on **Membership > Join or Renew.**

## What Makes a Winning Photo?

— Continued from Previous Page —

- An audience participation segment where you will get to score anonymous images and compare your results to those of our panel of judges. (The images used will not be actual LPS competition photos.)

### Panel members:

**Kurt Flock** – LPS President, Member of LPS for 9 years.

**JR Schnelzer, APSA, EPSA** – Past-president of LPS, Member of LPS for 23 years, Current Executive VP of Photographic Society of America.

**Ruth Sprain** – LPS Scholarship Chair, Member of LPS for 9 years.

## A Note From Your President

As most of you are aware, LPS recently conducted a survey in regard to the club. One of the most expressed topics from the survey was about the monthly club competitions and judging. I encourage everyone to attend the June monthly meeting where we hope to discuss and answer many of your questions about this very topic. This will be an interactive session with a panel and the audience. Hope to see you all there!

— Kurt Flock

## New Members

Welcome to our new members who have joined the Loveland Photographic Society since that last newsletter was published.

John Moore

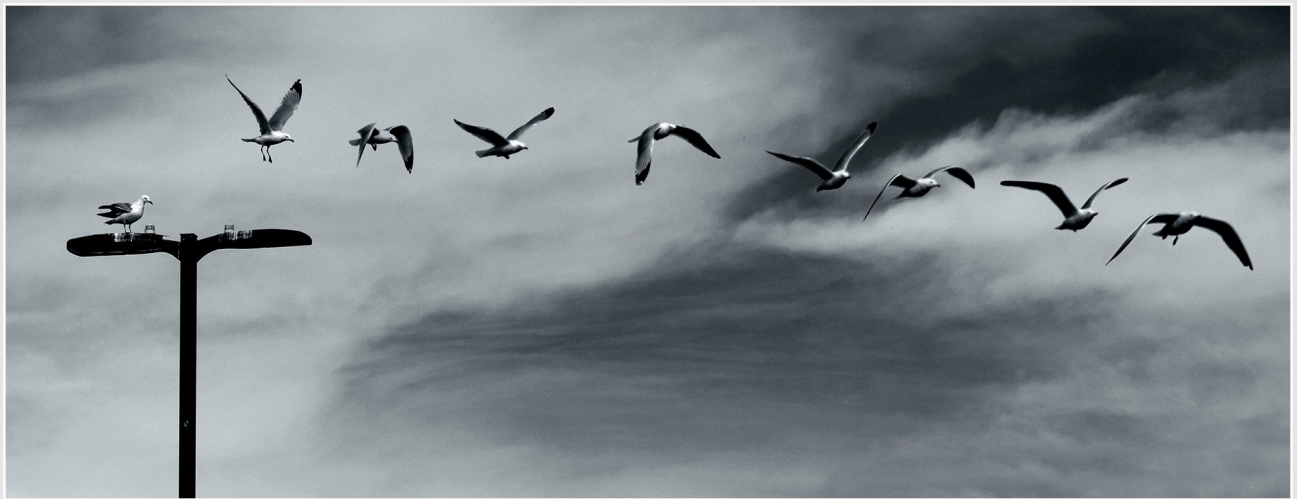


# PSA Youth Showcase Awards Announced

BY RUTH SPRAIN  
[SCHOLARSHIPS@LPS.CC](mailto:SCHOLARSHIPS@LPS.CC)

Winning prints and digital photos from the LPS Youth Showcase were entered into the PSA Youth Showcase. Samantha Griffin from Loveland High won 1st place with a \$175 prize in the digital monochrome category. Riley Nutt from Poudre High School and Sophia Stern from Monarch High School both won second place and \$50 awards. In addition, eleven photos from northern Colorado students were accepted for display at the PSA Conference in Spokane, Washington.

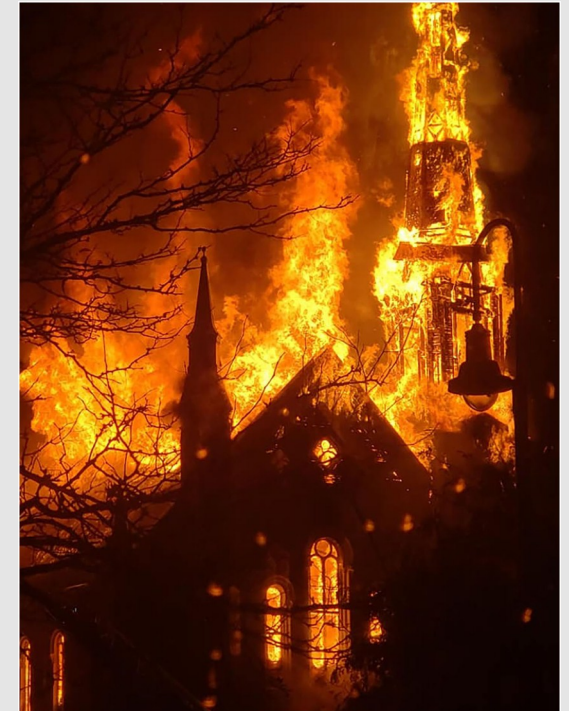
Students from across the United States, the Union of South Africa, and Indonesia entered 491 prints and 330 projected images into the PSA Youth Showcase. Congratulations to all students who won awards and acceptances!



**Lake Gull by Samantha Griffin, Loveland High won 1st place in digital monochrome.**



**Lake by Riley Nutt, Poudre High won 2nd place in PSA digital landscapes.**



**Religion on Fire by Sophia Stern, Monarch High won 2nd place in digital photojournalism.**

# Competition Corner

BY LORIE SMITH

[COMPETITION@LPS.CC](mailto:COMPETITION@LPS.CC)

Please congratulate the following members who have advanced to the next level of competition.

## Advanced

Wesley Hunget  
Scherry Allison

## Masters

Jerre Johnson

## June Theme

Reflections

## Submission Deadline

Before Midnight, Monday, June 3

## Please keep the judging criteria in mind:

**Impact and Viewer Interest** — "Wow" factor is the nebulous quality where an image "pops". This subjective aspect of judging should not preempt the technical or composition aspects of an image.

**Composition** — Good composition is a pleasing arrangement of the elements in an image. There are many guidelines for good composition that judges may consider.

**Technical Quality** — This includes sharpness, focus, color, tonal scale, contrast, appropriate depth of field and other qualities. Consideration is also given for the effect the photographer was trying to achieve such as high key, multiple exposure, selective focus, etc.

**Monthly Themes** — The subject matter should be related in some manner to the theme. While there are no formal "deductions" or penalties, judges may reduce their overall score if they feel the image

does not align with monthly theme. With that said, creative interpretation is encouraged.

## Future Monthly Themes

July — It's a Colorado Thing

August — Celebrate Color!

September — How We Get There

October — This Ordinary Life

November — Joy!

December — TBD

## The LPS Affiliate Program

The following companies have offered LPS various programs for the club and anyone who uses the special links provided on the website to make purchases. Make sure to use the links **each time you order**. Otherwise, you and LPS will not receive the benefits of the program each company offers.

- ◆ Amazon.com
- ◆ Adorama
- ◆ Feisol
- ◆ MindShift Gear
- ◆ Red River Paper
- ◆ Think Tank Photo
- ◆ Topaz Labs

Click on **Affiliate Program** on the LPS.CC website home page.

## NEW PRODUCTS

*Announced by Our Affiliates*



## Stand Manager 52 Rolling Case

*Available from our affiliate, ThinkTank*

We all know that lighting stands are heavy, cumbersome and hard to transport. The Stand Manager 52 rolling case is an ideal solution for storing and transporting stands of any kind. The case holds up to 4 turtle base C-stands, multiple traditional light stands, or modifiers up to 52" long. It features multiple tie-down straps to secure your stands inside the bag, oversized, shock-absorbing wheels, and rear skid rails which allow you to load in and out of your vehicle with ease.

Use this link in order to receive free gear and shipping on all orders over \$50, and so that you'll receive your commissions.

<https://www.thinktankphoto.com/collections/rolling-cases-manager-series/products/stand-manager-52?rfsn=140639.2f0f13>

## Suggestion Box

Suggestions or comments concerning the club can be [submitted here](#), which in reality is an email to the editor. Your email will be forwarded to the appropriate board member. Thanks for your input!



# Is Composition a Matter of Opinion?

BY OCTAVIO NODA  
[PROJECTIONIST@LPS.CC](mailto:PROJECTIONIST@LPS.CC)

It is a strong belief that beauty is in the eye of the beholder. However, Pythagoras a Greek philosopher and mathematician, believed otherwise. His opinion was that beauty is tangible and it is not a matter of opinion. In fact, he proves through a mathematical equation known as the Pythagorean theorem, that beauty has three components: ***symmetry, proportion and harmony***. His mathematical formula is based on the relation between the sum of the larger quantity to the smaller. In art, this mathematic principle is known as the Golden Ratio that is the essence of beauty. Many artists and architects have designed their works to approximate the Golden Ratio, especially in the form of the golden rectangle. There is also the Golden Spiral, that are rectangles that lead the eye to the center of the composition

When this principle is applied in photography the result is perfect composition. As a matter of fact, the Golden Ratio can be found in nature, in the skeleton of animals, human body proportions, including the universal law.

The Italian mathematician Luca Pacioli once declared: "without mathematics there is no art".



## Belgium Horses Offer Photo Options

BY RUTH SPRAIN  
[SCHOLARSHIPS@LPS.CC](mailto:SCHOLARSHIPS@LPS.CC)

The LPS members who went to Longmont to photograph Belgium horses found the large horses gentle and ready for action. First, members clicked away as two horses ran and jumped. Then horses offered noses to rub and opportunities for close-ups. However, the experience wasn't complete until everyone wandered the property to view Long's Peak in the distance, stroll along the creek, and appreciate flowers in the landscape.

Thanks to the Kuehls for providing the experience for us.

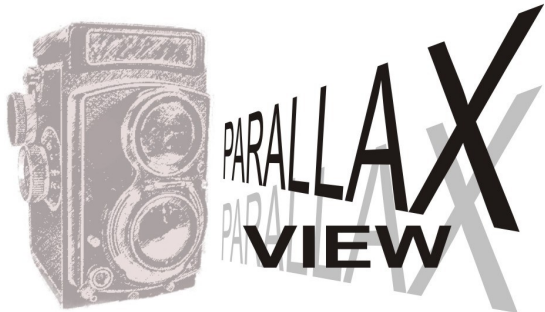


**"Kristi Takes Photos"** — Kristi Norman takes action shots of a Belgium horse.



**"Taking Photos"**— Lorie Smith laughs when a horse gets too insistent about getting his picture taken.





## Color Matching

BY BILL SHANAHAN  
[NEWSLETTER@LPS.CC](mailto:NEWSLETTER@LPS.CC)

About twenty years ago I took some snapshots of the Panama Canal with an early digital camera. These shots were taken through windows that I think they were covered with rubylith or something to block the harsh sunlight. Anyway, one of the photos turned out to be okay in terms of color, where the others had a magenta cast to them.

I don't remember if I tweaked the color-correct photo at some point or not, and really don't know what I did to make it blue. Maybe I stepped out on the flying bridge for that shot. In any case, I wanted to figure out what I did to that image so I could repeat the process with others.

My first thought was to alter the temperature, but couldn't determine the temperature of the "good" image. Photoshop displays a bar to adjust temperature plus or minus going from zero, but doesn't show the real temperature.

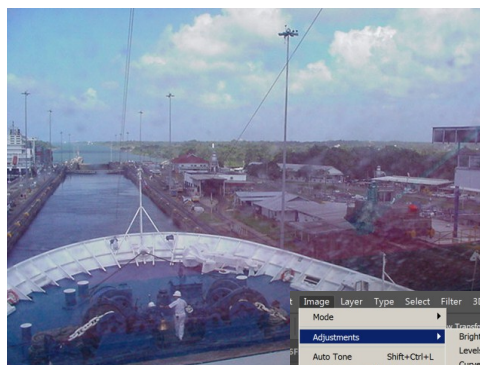
After fooling around with different settings that didn't work, I found an article on how to match colors when overlaying a selection from one image to another. Why wouldn't this work with a whole picture? It does.

Open up the "good" picture in Photoshop, and follow these steps:

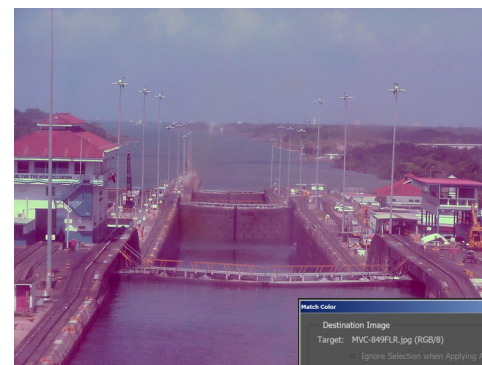
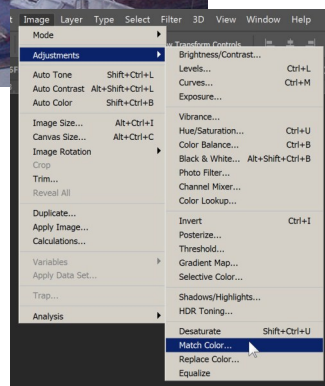
Menu > Image > Match color

Save statistics

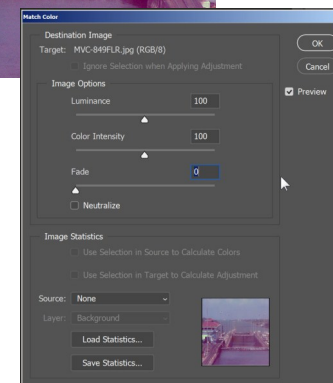
Name the stat file after the photo for future reference



Original color-correct photo where statistics were saved



Original off-color image (above) and after color matching applied (below)



Open the "bad" photo in Photoshop:

Menu > Image > Match color

Load statistics

Use the same stat file from other photo

Tweak as needed

File save as

This proved to be an easy fix, and will no doubt come in handy when working with images that need some color correction.

