



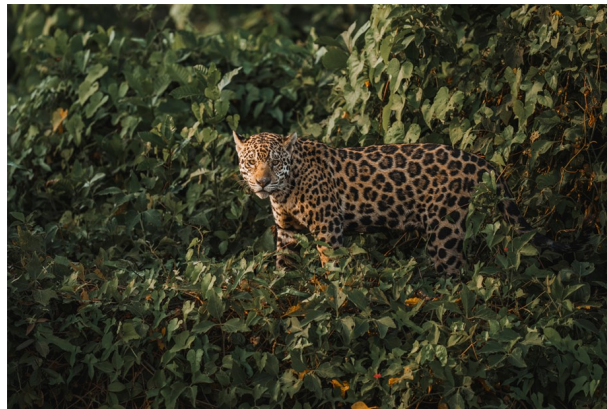
Mastering Low Light Photography November Presentation by Annalise Kaylor

We're excited to host this webinar for the Loveland Photographic Society, featuring Backcountry Journeys trip leader and world-class wildlife photographer Annalise Kaylor. This webinar will focus entirely on how to capture stunning wildlife images in low light settings. Many wildlife species are most active when there is very little environmental light available, making it tricky to capture images with telephoto lenses. In this webinar Annalise will share many tips and tricks to overcome these challenges and capture world-class shots.

Whether you're just getting started on your photography journey or a seasoned professional, this webinar is a great way to level up your wildlife photography skills and knowledge. It's also a great way to get to know Annalise and ask any questions you may have about wildlife photography or Backcountry Journeys and the many trips we run.



Bull Moose in Denali National Park // ISO 20,000



Club Meetings

Monthly club meetings are hybrid in-person plus Zoom; the Saturday Chat is in-person only; the Third Monday Review session is online only. *No pass code is needed for the online meetings*

Tuesday, November 5

LPS Board Meeting

Perkins Restaurant
2222 W. Eisenhower, Loveland
6:30 PM
Open to All

Monday, November 11

Monthly Club Meeting

Trinity United Methodist Church
801 Cleveland Avenue, Loveland
Social time 6:00 PM
Meeting 6:30–8:30 PM

[https://us06web.zoom.us/j/93226580276?](https://us06web.zoom.us/j/93226580276?pwd=eWxtbVYzTGpWbWlYY3lscGNwbWZRdz09)

[j/93226580276?](https://us06web.zoom.us/j/93226580276?pwd=eWxtbVYzTGpWbWlYY3lscGNwbWZRdz09)
[pwd=eWxtbVYzTGpWbWlYY3lscGNwbWZRdz09](https://us06web.zoom.us/j/93226580276?pwd=eWxtbVYzTGpWbWlYY3lscGNwbWZRdz09)

Monday, November 18

Third Monday Photo Review

6:30–8:30 PM
[https://us06web.zoom.us/j/95087721084?](https://us06web.zoom.us/j/95087721084?pwd=eXlIMndWenQyaCt6WUV6RmpenlWdz09)

[j/95087721084?](https://us06web.zoom.us/j/95087721084?pwd=eXlIMndWenQyaCt6WUV6RmpenlWdz09)
[pwd=eXlIMndWenQyaCt6WUV6RmpenlWdz09](https://us06web.zoom.us/j/95087721084?pwd=eXlIMndWenQyaCt6WUV6RmpenlWdz09)

The LPS Board meetings are open to all members. If you are interested in seeing how your leadership team tends to club business, you are welcome to attend, although only Board members can vote.

Ardeth Carlson

SERVICE

Officer Elections in November 2024

Election of the officers for the 2025 year will be held at the November meeting. The slate of candidates is as follows:

President: Rich Krebs
Vice president: Malcolm Patten
Secretary: Jerre Johnson
Treasurer: Jen Lammey

Elections for any office are always open, and any member who wishes to run for an office is welcome to do so; just notify secretary Jerre Johnson to be added to the ballot. Candidates can also be nominated from the floor at the November meeting but must agree to serve, either in person at the meeting or by a provided written agreement.

If there is only one candidate for an office, voting will be by voice vote; if more than one member is running for office, there will be a written ballot. Members joining online can send their vote privately to the secretary via the chat option.

Program Committee Member Needed

Ruth Sprain will be stepping down from the Program Committee, after serving for three years. This three-member committee works together to find presenters for our club meetings or organize alternative hands-on activities. This is a non-elective position. The new member would join the team in January 2025. If you would like to know more about what is involved with this committee or are interested in volunteering, visit with Ruth or committee members Rich Krebs and Tim Kathka.

Please consider your availability to serve on this important committee, especially as Rich Krebs will also be serving as LPS president next year in addition to the program committee.

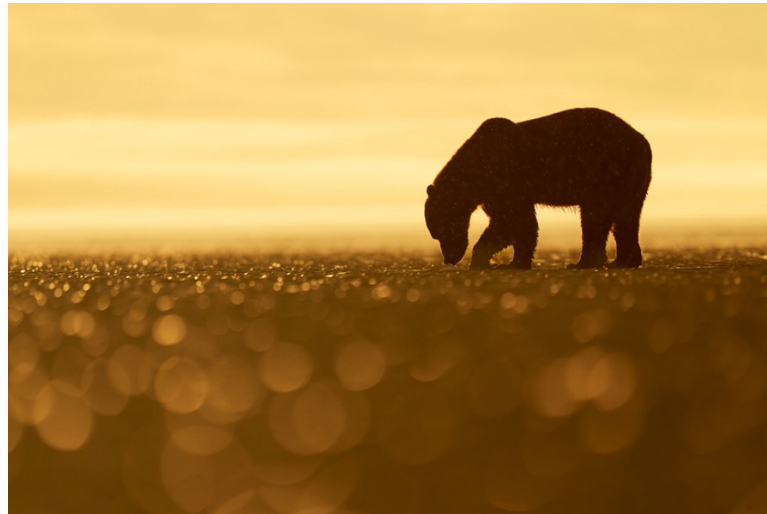
Presenter Profile:

Annalise's work has taken her on assignment to 39 countries around the world (and counting!). With an emphasis on documentary photography, Annalise's photo and video work has been seen in The New York Times, The Washington Post, National Geographic, Audubon Magazine, and the Associated Press, as well as PBS, the BBC, Great Big Story, and the Discovery Channel. As a visual storyteller, she also partners with NGOs and non-profits, including The Nature Conservancy, charity: water, and Habitat for Humanity International.

She is the co-creator of the PhotoWILD podcast which braids together the art and science of wildlife photography, and a writer for the publication of the same name.

When not hunkered down in her floating blind, leading photography workshops, or working behind the lens, Annalise can be found birdwatching, birdwatching some more, hiking with her dog Susan, kayaking, even more birdwatching, and playing strategy board games (Wingspan, anyone?).

Join us to learn more photographing wildlife in low light conditions. Whether you're planning a future trip or simply want to learn a thing or two about wildlife photography, this webinar is not to be missed!



© Annalise Kaylor

LPS Board of Directors

ELECTED OFFICERS

PRESIDENT

— ARDETH CARLSON

VICE PRESIDENT

— RICH KREBS

TREASURER/MEMBERSHIP

— JEN LAMMEY

SECRETARY

JERRE JOHNSON

CHAIRPERSONS

PROGRAMS

—TIM KATHKA

—RICH KREBS

— RUTH SPRAIN

COMPETITION

— ROB HUFFSMITH

WEBMASTER

MIKE TESKA

PROJECTIONIST

— MALCOLM PATTEN

MENTOR

—MIKE WILCOX

PSA REPRESENTATIVE

—LISA SCHNELZER

SCHOLARSHIPS

— RUTH SPRAIN

NEWSLETTER

—ARDETH CARLSON

FIELD TRIPS

—JIM ROODE

PUBLICITY

—KEVIN FETTIG

FORUM DIRECTOR

—INGRID JACOBSON

GREETING HOST

—BILL LUNDQUIST

Mailing Address

P. O. Box 7604
Loveland, CO 80537

Members-Only Facebook Group

<https://www.facebook.com/groups/237033251716/>

Public Facebook Page

<https://www.facebook.com/LovelandPhotographicSociety/>

December End-of-Year Meeting

ARDETH CARLSON, PLANNING COMMITTEE

The final meeting of the year on December 9 will include a sit-down dinner, with a catered buffet for members, who can also bring one guest. The meal will be entirely paid for by LPS, but we encourage you to purchase raffle tickets, which will help support LPS activities. Doors will be open at 5:30 for chatting and viewing the member prints and the raffle items, with dinner beginning at 6:00.

Raffle tickets will be sold at the meeting for \$1 each or 12 for \$10, accepting cash or checks made out to Loveland Photographic Society. Tickets can be placed in bowls next to the various donated items. At the end of the evening, drawings will be held for each raffle item, and the holder of the selected ticket wins the item. Unsold items will be returned to the donor or taken to ARC. The raffle is open to members and non-members.

Member fees and any other funds raised during the year go toward the monthly rental of our meeting venue, our Virtual Pursuits web host, speaker honorariums, our LPS Youth Showcase expenses, a P.O. box, our internet domain listing, postage for print competitions, and various other miscellaneous expenses.

If you have any items or services to donate that you feel members would be interested in winning, you can bring them to the church between 12:30 and 4 p.m. on the meeting date or make arrangements to drop them off at the home of Ardeth Carlson a day or two in advance.

In the past, members have donated such things as camera bags, tripods, books, reflectors or other photographic accessories, photograph prints, a couple hours of photographing or post-processing mentoring, mugs, and other non-photographic items such as home décor.

We would appreciate some volunteers who can help with room setup ahead of the meeting and cleanup afterwards. ***There will be signup sheets at the November meeting for the dinner, raffle donations, and setup/cleanup.***

Member Print Exhibition

Again this year, members will have the opportunity to share their photos other than in a competition. Members can bring up to two printed photos for a special exhibition at our December meeting. We are unable to hang photos so they will be displayed flat on the tables, or you can bring easels for your photo display.

Prints should be no smaller than 8x10 (although, of course, larger prints have more impact) and can be printed on any medium. Matting and/or framing is optional, but prints on paper should be mounted on a backing. If you have questions, contact ardeth.carlson@gmail.com.

December Digital Showcase

This year the Planning Committee and Competition Chair have come up with a change in the way this year's end-of-year competition will be done.

Rather than the usual "Best Of" competition in which participants enter three photos that have been previously submitted during the year, this year all members can submit just one photo that has *not* been previously entered in a regular monthly competition. All photos will be submitted in a single group. There will be no designation of category, so the photo can be on any topic and can be a realistic image or be creatively processed.

We will be recruiting an outside judge, either from PSA or a local professional photographer. The judge will not score the photos but will comment on the photos at the meeting, which is both interesting and helpful in showing what the judge is looking for in a good image.

The Planning Committee hopes having members only submit one photo instead of three will keep our December event from running so long, since we are scheduling time this year for the sit-down dinner and conversation in addition to the print exhibition and fundraising raffle. We look forward to seeing our members' work in the December digital showcase as well as the print exhibition.

LPS Membership

Although LPS welcomes guests to our monthly club meetings, there are benefits to joining as a member. If you like to see how your images fare in competition, you can submit up to 3 photos each month in our club competitions; you also have the opportunity to have an image submitted in the PSA interclub competitions.

If you hate competitions (!), the club is also a great place to meet other photographers, get critiques and comments at the Third Monday Review sessions, find photo-op events and activities, and watch the recordings of meeting presentations. You might enjoy initiating meet & shoots or participating in field trips.

Your membership dues also fund our annual Youth Showcase, which encourages photographers from our northern Colorado high schools to pursue the art of photography and provides them with an opportunity to have their images displayed with national/international exposure at the annual PSA Photo Festival.

If you have questions or want to volunteer for any of our various committees and activities, you can use the members-only Facebook group or email ardeth.carlson@gmail.com.

Invitation to Submit an Article

The newsletter editor is always looking for material that would be of interest to our members for future issues of InFocus. There are many subjects for which you can share your expertise or experiences, such as post-processing techniques, camera equipment, and great locations to shoot.

If you aren't confident in your writing ability, the editor will help polish your article for publication. Send your ideas or articles to ardeth.carlson@gmail.com.

Competition Corner

Submitting Pictures for Competition or the Photo Review Session

- Log on to the LPS website
- Mouse over the **Competitions** dropdown on the Home Page.
- Select **Submit images to a Competition**
- Select the Competition category or the Third Monday Photo Review
- At the bottom of the screen, click on **Upload images into the Competition.**
- Then click on the button **Select** which will open a window on your computer to select an image.
- Click on **Save Images and Proceed to Edit Page.**
- Type in a title and click on **Save any changes and return to original page.**
- You can replace any photo, up to the submission deadline, if desired.

The monthly competitions allow a single image per category. The photo review session allows up to three images.

New Members

We are happy to welcome these new members:
Kent Sinclair
Hayden Troudt

November Competition

Competition Categories

Open Projected (included every month)
Nature (rotating category)
Monthly Topic: Still Capture

Submission Deadline

Before Midnight, Monday, November 4

Please keep the judging criteria in mind:

Impact and Viewer Interest—"Wow" factor is the nebulous quality where an image "pops." This subjective aspect of judging should not preempt the technical or composition aspects of an image.

Composition—Good composition is a pleasing arrangement of the elements in an image. There are many guidelines for good composition that judges may consider.

Technical Quality—This includes sharpness, focus, color, tonal scale, contrast, appropriate depth of field and other qualities. Consideration is also given for the effect the photographer was trying to achieve such as high key, multiple exposure, or selective focus.

Monthly Topics—The subject matter should be related in some manner to the topic. While there are no formal deductions or penalties, judges may reduce their overall score if they feel the image does not align with the monthly topic. With that said, creative interpretation is encouraged, except in categories with specific rules such as monochrome.

Open Projected—The image must begin as a photograph. From there, it is up to you. Any photograph may be entered in the Open Projected category.

Monthly Topic: Still Capture

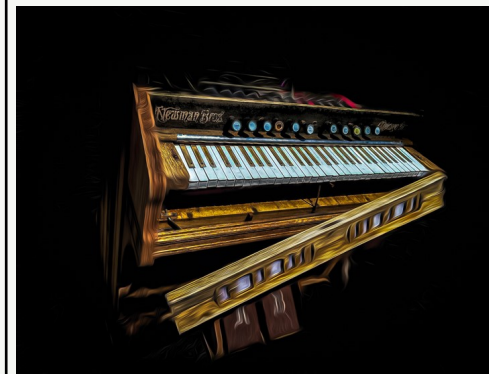
The monthly topic for November is "Still Capture." Competition chair Rob Huffsmith indicates that the intention is the classical sense of a still life, i.e. a composition of objects in a portrait. These examples can give you some ideas for your submission. Note that the objects do not need to be the often-seen "bowls and fruit" arrangement nor do they necessarily have to be specifically arranged by you. Your image can be as creative as you would like or can be very traditional.



© Robert Huffsmith



© Robert Huffsmith



© Robert Huffsmith



© Ardeth Carlson

Nature Competition

The rules for nature competition photos are included on the LPS website under Competitions>PSA Interclub Image Competitions>PSA Guidelines for Nature Images. There is a clickable link to open the full PSA guidelines for nature photography, which is too extensive to print in the newsletter. This guide for both photographers and judges includes specific examples of the do's and don'ts of our nature competition.

In addition to the PSA Interclub Nature rules, the regular LPS rules of format and preparation specify that the image cannot contain text added by the photographer, which includes a copyright, title, or watermark.

Another guideline to keep in mind is that this is a reality category. Although adjusting contrast and color is acceptable in editing, it is important that the image does not look unnatural. While images in the open category can be stylized to resemble a paint technique or extremely saturated for drama, a nature photograph should replicate the tones and colors that are natural to the scene.

The PSA guidelines include the following scoring suggestions for judges of a nature competition (summarized here):

Level 1—Descriptive stories. These are images that contain only descriptive information about the subject (shape, color, size and so on), often with the subject in a static position.

Level 2 —Behavior and life cycle stories. These are images that illustrate typical behavior of the subject or tell a story about part of its life cycle.

Level 3 —Same-species interactions. Images at this level illustrate how creatures of the same species (mates, parents/offspring, group members, and so on) interact.

Level 4—Different species interactions. At this level the nature story is often more complex because it involves more than one species. It may show the result of an interaction, such as a

cheetah dragging its prey, or it may show the interaction taking place, as in competition for food or a symbiotic relationship.

This can help explain how a perfectly nice, sharp image might not receive a high score if the story is less complex, although this is subjectively determined by individual judges.

When the subject of a nature image is not a living creature, it is still important for the image to tell a nature story. At a basic level, that story will be descriptive—this is what the nature subject looks like. Examples of how more complex stories can be told include:

- Landscapes that show how geological forces or weather phenomena have shaped the terrain;
- Landscapes that show seasonal variations in vegetation;
- Images that show the environment in which botanical subjects are growing;
- Images that show several stages in the life cycle of a botanical subject;
- Images that show the symbiotic relationship between fungi and a host.

One of the nature rules that has caused some contention is the following:

“Objects created by humans, and evidence of human activity, are allowed in Nature images only when they are a necessary part of the Nature story.”

To be clear, this is speaking of the nature story, not the image story. It still excludes any evidence of human interaction. For instance, when sandhill cranes come to feed in a (obviously human created) cornfield, that is part of their migration pattern as they store up energy for their long flights. When an osprey nests in a manmade platform and their nest might include baling twine, that is their adaptation mechanism to find places to raise their young. But a chipmunk eating from a person's hand or birds at a bird feeder do not fit the rule of a necessary part of the nature story because that is not the chipmunk's or the bird's primary source of food or necessary for them to survive (even though the chipmunk or bird

might think so!). This can sometimes seem arbitrary, but the thought is to create images of the natural world without including human interaction.

It is important to reiterate that the reason LPS is following the nature guidelines established by PSA is so that when the LPS reps for the PSA interclub competitions want to look for competition entries from our club, they need to be confident that a selected image will not be disqualified in the interclub competition.

Again, please refer to the nature rules on the LPS website as you choose your photo to submit.

November LPS Competition Groups

Participation in a group is determined by the average of the member's 9 previous LPS competition scores within a 12-month period. The groups for the November competition:

Group 5—Max Coopwood, Ed Ogle, J.R. Schnelzer, Lisa Schnelzer, Jeff Stephenson, Guy Wagner

Group 4—Ardeth Carlson, Tim Hitchcock, Robert Huffsmith, Tim Kathka, Dan O'Donnell, Alan Schuppan, Ruth Sprain, Mike Wilcox

Group 3—Jenny Anderson, Gerald Baumann, Kevin Clarke, Kevin Fetting, Kurt Flock, Jerre Johnson, Rich Krebs, Bob McDonnell, Octavio Noda, Malcolm Patten, Laurie Paulik, Josemaria Quera, Mike Teska, Dave Van Riper,

Group 2—Jim Roode, Wayne Snodderly

All other members will compete in Group 1 until the member has 9 submitted images that result in an averaged score for a different group. An individual member's competition group might vary during the year.

Group Range of 9-Score Averages

Group 5 > 22.3

Group 4 <= 22.3

Group 3 <= 21.3

Group 2 <= 20.0

LPS October Best of Show

All competition photos and scores can be viewed on the LPS website under Competition Results. Check the box "Display All."



BOS Topic, Group 5
Jeff Stephenson



BOS Topic, Group 4
Alan Schuppan



BOS Topic, Group 3
Laurie Paulik



© Ed Ogle



© Mike Teska

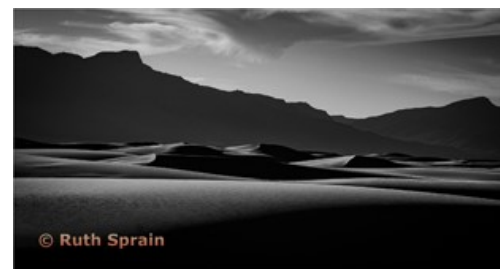


BOS Topic, Group 2
Jenny Anderson



BOS Open, Group 5
J.R. Schnelzer

BOS Open, Group 4
Ed Ogle



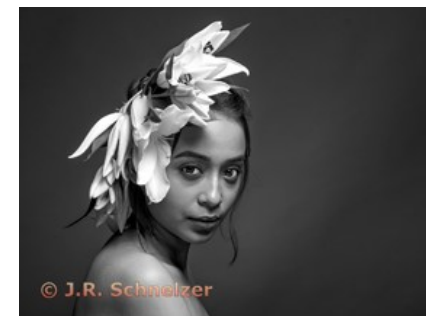
BOS Monochrome, Group 4
Ruth Sprain



BOS Open, Group 2
Jenny Anderson



BOS Monochrome, Group 3
Dan O'Donnell



BOS Monochrome, Group 5
J.R. Schnelzer



BOS Monochrome, Group 2
Wayne Snodderly

LPS October Award of Merit



AOM Topic, Group 5
Max Coopwood



AOM Topic, Group 4
Ed Ogle



AOM Topic, Group 3
Mike Teska



AOM Topic, Group 2
Wayne Snodderly



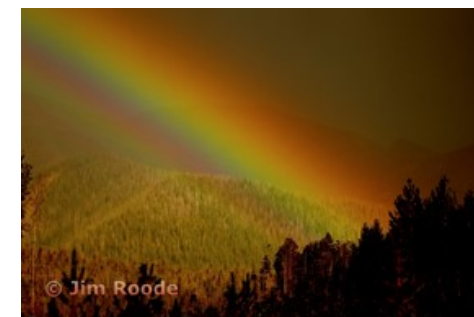
AOM Open, Group 5
Max Coopwood



AOM Open, Group 4
Timothy Kathka



AOM Open, Group 3
Bob McDonnell



AOM Open, Group 2
Jim Roode



AOM Monochrome, Group 5
Max Coopwood



AOM Monochrome Group 4
Ed Ogle



AOM Monochrome, Group 3
Mike Teska

PSA Interclub Competitions

LPS is a member club of the Photographic Society of America and participates in four divisions of interclub competition: Nature, Photojournalism, Print, and Travel. There are three rounds of competition per season, with deadlines on November 15, February 15, and April 15.

LPS members who are interested in having their photos considered for our club's submissions to a PSA interclub competition can contact the LPS rep for more details.

NATURE DIVISION:

Dan O'Donnell, LPS Rep
djod@me.com

Nature Division (ND) image guidelines can be found at <https://psa-photo.org/page/nature>. Dan is looking for images that illustrate an interesting behavior or a unique point of view, not just a landscape or wildlife that is in good focus! Storytelling is an important part of the image. Maximum image size is 1920x1080 pixels.

PHOTOJOURNALISM DIVISION:

Ardeth Carlson, LPS Rep
ardeth.carlson@gmail.com

Information about the Photojournalism Division (PJD) and guidelines for photojournalism images can be found at <https://psa-photo.org/page/photojournalism>. Ardeth is looking for photos that contain informative content and emotional impact, reflecting the human presence in our world. The image should contain a strong visual story. Maximum image size is 1920x1080 pixels.

PICTORIAL PRINT DIVISION:

Lisa Schnelzer, LPS Rep
western-exposure@hotmail.com

The five image categories in the Pictorial Print Division (PPD) are: Small Color, Large Color, Small Monochrome, Large Monochrome, and Creative Altered Reality. For further information regarding submissions, contact Lisa.

TRAVEL DIVISION:

Rich Krebs, LPS Rep
rkrebs318@gmail.com

A definition of a travel photo and a PDF of the Travel Division (PTD) guidelines can be found at <https://psa-photo.org/page/photo-travel>. Rich would like images that show characteristic features of a place or a people. Image size should be a maximum of 1920x1080 pixels.

LPS Interclub Photos Needed

The interclub reps for the four divisions in which LPS participates need more photos from our members for Round 1 of the PSA interclub competition.

Rich Krebs, the rep for the Travel Division, is leaving on a trip on October 27 and still needs photos before the Round 1 deadline. If you have good travel photos for Rich to consider, he is asking that you send them to him at rkrebs318@gmail.com before the 27th.

PSA Individual Competitions

Members of PSA have many opportunities to submit photos for individual competitions. These competitions include several rounds:

Pictorial Image—Portrait; Landscape; Still Life, Architecture

Photojournalism—Photo Story; Short Story; Quarterly

Pictorial Print—Green Eagle; Print of the Month; Photo Book Essay

Photo Travel—Photo Travel Essay; Photo Travel Mini Essay

3D Division

Winning photographs in the individual competitions might be published in the PSA Journal in the news from each division.

For complete information:

<https://psa-photo.org/page/competitions>

Reasons to Join PSA

An individual membership in the Photographic Society of America is an excellent bargain for photographers seeking to improve their photography skills. PSA offers free online photography courses, study groups, mentorships, and the opportunity to compete individually in the PSA divisions of Nature, Travel, Pictorial Print, Projected Image, Photojournalism, and 3D. Educational webinars on a variety of subjects can be viewed at any time.

Online image dialogue groups on various topics are open to all PSA members, in which members of groups of 6-7 submit a photo once a month, and other members offer comments, critiques, and suggested edits.

In addition, the monthly PSA Journal is available online for download. This is a beautiful publication with a lot of information about photography locations and ideas for different photo genres plus discussion on relevant topics about photography.

The annual PSA Photo Festival is a great way to meet photographers from all over the U.S. in addition to members from other countries. The program presenters are topnotch, and the tours provide fun field-trip experiences.

Members of PSA who live in Colorado can also join the Colorado chapter of PSA. This chapter meets several times during the year, featuring a speaker, and group photo tours may be offered in the future. For more information, contact Deborah Milburn at ddmilburn3@gmail.com.



Women's Winter Photography Conference

ARDETH CARLSON

The Outdoor Photography Alliance is presenting a conference specifically for a gathering of women photographers from February 6 through February 9 in Estes Park.

This conference is described as “focused on creating connection, sparking imagination, and inspiring creativity and is designed to fit people in all levels of the photographic journey from beginner to professional. Attendees will leave with a wealth of knowledge, connection, inspiration, experiences, and resources...and maybe even a few laughs.”

After a welcoming reception and dinner on Thursday, some of the leading women nature photographers in the field will be giving presentations over the next three days of the conference. The conference hotel is the Holiday Inn, and registrants are given a 10% discount or are also welcome to stay at a different hotel.

To listen to a podcast discussing the conference, go to outdoorphotoalliance.com to find the podcast “Empowering Women Outdoor Photographers Through the Outdoor Photo Alliance” on f-stop with Matt Payne. For complete information about the schedule and a list of speakers and their bios, go to <https://www.outdoorphotoalliance.com/womens-photography-conference>.

If you register soon, you can get a \$100 discount on the cost of the conference. I have registered for the conference, and if you are interested in sharing a ride to Estes Park and/or sharing a room at the Holiday Inn, contact me.

Ladies, treat yourself to an amazing time learning and being inspired.

Loveland Art in Public Places

The Art Advocacy Project is a one-year on-loan program that provides regional artists in 2D medium, which includes photography, the opportunity to display and sell artworks through a one-year showcase at the Loveland public library in the central Galleria. Artists may submit one work for consideration by a jury panel composed of representatives from the AIPP organization and citizen volunteers. Accepted artwork will be displayed for one year, beginning in February 2025. The deadline for submission is January 5, 2025, at 11:59 PM. For complete information go to: https://artist.callforentry.org/festivals_unique_info.php?ID=14198

Sharing Your Photos

If you use the subscription Adobe Photoshop Creative Cloud, you can take advantage of their Adobe Portfolio feature. Examples of portfolio layouts can help you get started. Having your own portfolio gives you a link to provide on social media sites or give to people who are interested in seeing your work.

Another way to share photos is on Flickr.com. You can set up a free account or pay for an annual “Pro” subscription. Either way, you can receive comments on your photos and participate in various challenges such as Crazy Tuesday and Flickr Friday. Get out there with your camera, and then don't let those photos just sit in a computer file!

ViewBug offers a free option to upload your photos and view the photos of other photographers. There are also several subscription options. There are always multiple contests to enter, with a variety of prizes, and you can earn “coins” to get discounts on purchasing items or services. The sharing is a little more complicated than with Flickr, and the contests usually have thousands of entries, so the odds of winning are somewhat low!

Photo Challenges

Stretch your photo skills and find motivation by participating in various online photo challenges. Here are a few suggestions.

18 Fun Photography Challenges—challenge ideas to try at any time.

<https://fixthephoto.com/blog/contests/photography-challenges.html>

Flickr Challenges

Flickr.com is an online photo sharing website that includes several weekly challenge groups:

Crazy Tuesday—The challenge is posted on Tuesday, and the photo may be taken any time during the week but can only be posted on the following Tuesday. Recent challenges:

- Different objects, same color
- Reflections
- Flowers in Black & White

Friday Friday—A new challenge is posted each Friday; photo must be taken and posted by the following Thursday. Some recent challenges:

- Measure
- Mask
- Toolkit

Smile on Saturday—A new challenge is posted each Saturday; photos can have been taken at any time but cannot have been previously posted on Flickr.

October Worldwide Photo Walk

Eleven photographers participated in the KelbyOne Worldwide Photo Walk on Saturday evening, October 5. LPS members included our host, Roger Good; Ardeth Carlson; and Kurt Flock, and the group was joined by spouses and other friends. Photos from that walk in downtown Loveland can be seen in a shared album here: <https://photowalk.slickpic.com/share/MucNMjMMz1QzjY/albums/Loveland-Downtown-Photowalk/?flow>

Third Monday Photo Review

An excellent way to get feedback on your photos and for experienced photographers to share their knowledge is to participate in the Monday photo review sessions via Zoom on the third Monday of each month. Participants are allowed to submit three photos no later than noon of the session day. The review is mentored by Mike Wilcox, who welcomes and encourages comments and suggestions by all participants. Many members have reported that they have received a greater knowledge of photo techniques and also found it helpful to see their photos in the eyes of other photographers. Because judges of the monthly competition most often do not have time to offer critiques on all of the competition photos, the Third Monday Review provides that helpful aspect of improving our craft. Click on the link on page 1 of the newsletter to join the Zoom meeting.

Saturday Photo Chat

The Saturday Photo Chat, formerly known as the "Bull Session," is an informal get-together of photographers to talk about places to photograph, gear, photo software, and almost anything about photography. This has been an ongoing activity for many years, headed by former LPS member Bill Standerfer. The meetings are on the second Saturday of the month at 8:30 AM, now meeting at Earle's Coffee Shop, 1423 North Denver Avenue in Loveland. If you have any questions, contact Bill at billstanderfer@outlook.com.

Newsletter Index

To find articles in previous issues of the LPS InFocus newsletter, go to the Newsletter Index on the website. The titles of the articles are displayed in alphabetical order. To find a specific article, the index shows the year and month of the issue of the newsletter and page number on which the article appears. In order to look at the article, you then need to go back to Newsletters and select the issue you want.

Submitting Third Monday Review Photos Into Competition

Several members have noted that they are having difficulty with entering a photo in a monthly competition that has previously been submitted to the Third Monday Review. To do that, the competition image must be selected from your Image Library on the LPS website, not uploaded again from your computer. If you have made changes to your Third Monday photo and want to enter that in the competition, which is allowable, you need to delete the first image from your Image Library before submitting the updated photo in the competition.

A photo that has been entered in an LPS monthly competition cannot be entered again during that year (even if you want to submit it to a different category or changed it a little), and if the photo has received a BOS or AOM award in monthly competition, it can then no longer be entered in any LPS competition except the December "Best Of" for that year.

LPS Website Discussion Forums

Log in to www.lps.cc as a member

🔑 Click on *Discussion Forums*

🔑 You can select any of the headings, such as *Upcoming Photo Opportunities & Events* or *Meet & Shoot*

🔑 Click on *View Topics* to see the posts.

If you would like to receive notifications with the latest posts for that topic, click on the Subscribe button.

The board decided to auto subscribe all members to the Field Trips heading, but if you do not want to receive notifications of those posts, click on Edit Subscription and choose your desired option.

LPS InFocus The e-Newsletter for the Loveland Photographic Society

EDITOR

Ardeth Carlson

ardeth.carlson@gmail.com

Newsletter issues available at
<https://www.lps.cc>

LPS Speaker Recordings

Most meeting presentations have been recorded for viewing by members only. You can find links to the videos on the LPS website; go to **Membership>Resource Links>Videos**. Please *do not share* these links with non-members unless they are marked as shareable in the list.



Our Facebook group **Members of Loveland Photographic Society** provides information on club meetings and events and is a place to share your photos and initiate conversation about photography topics that interest you. You must be a current member to join the group.

JOIN THE CLUB

If you are reading this newsletter as a non-member and would like to join the Loveland Photographic Society, go to the main page on the www.lps.cc website and click on **Membership > Join or Renew**. Annual dues are \$45. Membership dues may be paid by credit card online, mailed to the P.O. box address on page 9, or in cash or a check made out to Loveland Photographic Society and given to the LPS treasurer.