

Club Meetings

Saturday, April 11

Photo Bull Session

Location TBD

[556 Lincoln](#)

Loveland, CO

8:30–10 :30 AM

Monday, April 13

Monthly Club Meeting

Group Publishing

[1515 Cascade Avenue](#)

Loveland, Colorado

Social Hour

5:30-6:30 PM

Club Meeting

6:30-9:30 PM

Monday, April 20

Photo Review Session

Loveland Library

Gertrude Scott Room

[300 Adams Avenue](#)

Loveland, CO

6:00-8:00 PM

Tuesday, May 5

LPS Board Meeting

Open to All

Perkins Restaurant

[2222 West Eisenhower](#)

Loveland, CO

5:30 PM Optional Dinner

6:30 PM Meeting

COVID-19 Affects LPS Meetings

BY MIKE WILCOX

LPS MENTOR

During the COVID-19 crisis, the LPS management team has decided to continue LPS meetings online instead of in person. This will allow us to still get together once a month safely. Many of the features of our in-person meetings will be preserved, along with some advantages not available before.

We will also be conducting the Third Monday Photo Review online and possibly the Second Saturday Photo Bull Session if there is interest. The link and access code will be the same.

All meetings will be held via computer/smartphone (IOS or Android) or regular cell phone or landline (without video) with GoToMeeting.com software, and as the organizer, LPS pays for the service. There will be no cost to participants.

As this is a work in progress, we will be adding features as we go, but initially you will be able to see all presentations. You will also be able to talk to other members during social hour via private or public chat and possibly direct conversation via video and voice for those using a computer with camera, tablet, or smartphone.

Meetings will continue to be held on the second Monday of each month, with social hour from 5:30 to 6:30 PM and the start of the meeting at 6:30.

Be sure to read the directions for joining and participating in the LPS online monthly meetings on page 3 and the information on the April meeting presenter on page 2. The LPS management team will continue to keep members updated through email and the newsletter. Although it is possible to join GotoMeeting on your regular phone or landline, because the speaker presentation is visual as well as voice, you will miss important aspects of the presentation if you don't use a smartphone or computer.

LPS Board of Directors

[PRESIDENT](#)

— KEVIN FETTIG

[VICE PRESIDENT](#)

— KURT FLOCK

[TREASURER](#)

— SANDY LOUCKS

[SECRETARY](#)

— SCOTT SPRAIN

[PAST PRESIDENT](#)

— TONY PARISO

[PROGRAMS](#)

— JEANIE SUMRALL-AJERO

[MEMBERSHIP](#)

— SANDY LOUCKS

[COMPETITION](#)

— LORIE SMITH

LPS Officers

[FIELD TRIPS](#)

— LYNNE LEWIS

[GREETING HOST](#)

— SHELLY KELLY

[MENTOR](#)

— MIKE WILCOX

[PROJECTIONIST](#)

OCTAVIO NODA & MIKE WILCOX

[FORUM DIRECTOR](#)

— INGRID JACOBSON

[PUBLICITY](#)

— OPEN

[SCHOLARSHIPS](#)

— RUTH SPRAIN

[NEWSLETTER](#)

— ARDETH CARLSON

[WEBMASTER](#)

— BILL SHANAHAN

[PSA REPRESENTATIVE](#)

— LISA SCHNELZER

[FACILITY SETUP](#)

— KURT FLOCK

InFocus

The e-Newsletter for the
Loveland Photographic Society

Mailing Address
P. O. Box 7604 • Loveland, CO 80537

Public Facebook Page
[https://www.facebook.com/
LovelandPhotographicSociety/](https://www.facebook.com/LovelandPhotographicSociety/)

Members Only Facebook Group
[https://www.facebook.com/
groups/237033251716/](https://www.facebook.com/groups/237033251716/)

Submitting Pictures for the Monthly Competition or Third Monday Photo Review Session

- Log on to the LPS.CC website
- Mouse over the Competitions dropdown on the Home Page.
- Select menu item:
Submit images to a Competition
- Select the Competition category or the Third Monday Photo Review
- At the bottom of the screen, click on **Upload images into the Competition.**
- Then click on the button **Select** which will open a window on your computer to select an image.
- Click on **Save Images and Proceed to Edit Page.**
- Type in a title and click on **Save any changes and return to original page.**
- You can replace any photo, up to the submission deadline, if desired.

The monthly competitions allow a single image per category. The photo review session allows up to three images—title the images with the letters A, B and C followed by your last name. This will allow us to limit the number of images if it is necessary.

Photographing Storms and Severe Weather Webinar Presentation by Cory Reppenhagen

BY JEANIE SUMRALL-AJERO
PROGRAMS@LPS.CC

Our April presentation will be brought to you online by Cory Reppenhagen, meteorologist/journalist/photographer for 9News Colorado. I have asked him to provide information about photographing storms and severe weather, including good places to find weather information and how to interpret it, as well as photographing and staying safe in different types of weather events: special cloud formations, thunderstorms, lightning, tornadoes and funnels, and supercells. Throughout the presentation, Cory will share some of his photos and the stories behind them.

Cory joined 9News in June of 2017. He is a Colorado native who was born in Colorado Springs and graduated from high school in Manitou Springs. He earned his B.A. in mass communications from Mesa State College in 1999 and his B.S. in geosciences from Mississippi State in 2010. Cory has won 3 regional Emmy Awards, including one for his coverage of the April 2011 Tornado Super Outbreak in Alabama. He has also covered 20 named tropical cyclones during his 10 years at WFTV in Orlando, Florida. His storm coverage includes a flight into the strongest hurricane ever recorded in the Atlantic Basin—Cat5 Wilma—in October of 2005.

You can enjoy Cory Reppenhagen's photos at <https://www.coryreppenhagen.com> or follow him on social media: Facebook, Twitter, Instagram.



Photo © Cory Reppenhagen

Attending an Online Meeting

New to GoToMeeting? For your iPhone or Android, get the app now and be ready when your first meeting starts: <https://global.gotomeeting.com/install/731570573> (control-click on this link or paste into your browser). You will be asked to enter your email address and create a password, which you will use when you join a meeting.

For attendees, joining a meeting in GotoMeeting is quite simple. A few minutes before the scheduled start time, go to the GotoMeeting website from your computer, tablet, or smartphone using this link: <https://www.gotomeeting.com/meeting/join-meeting> (control-click on this link or paste into your browser) or you can also dial in using your phone: +1 (571) 317-3122. To join the meeting, enter the access code 731-570-573.

You might see a preview that allows you to type in how you want your name to appear in any discussion; you should also click on the symbol for the microphone to use the audio and the camera symbol to activate your camera or webcam. If you don't want to speak or be seen, you should still be able to see and hear the presenter as well as any other participants who have a webcam (unless you are using a landline).

You do not need a personal account with GotoMeeting; the account holder is the organizer, LPS. For more detailed information about GotoMeeting, check out the website FAQs: <https://www.gotomeeting.com/meeting/online-meeting-support>

To summarize:

1. We will meet at the same time in the room of your home of your choice!
2. You will be able to hold conversations with your fellow members prior to the meeting, either by voice or video chat, and you can limit the conversations to a few or include everyone.
3. We will have outside presenters.
4. You will be able to ask questions.
5. We will continue with competition.
6. We will continue with Third Monday Photo Review.
7. You don't need a subscription to GoToMeeting.
8. The link to the meeting and access code will be the same for every meeting and available on the website or bookmarked by you.
9. Best yet, there will be no added cost on the part of the members.

We will also have mentors available to call if you are having difficulties.

The management team will value your input on use of the GotoMeeting service and other ways to maintain interest and participation as a member of LPS.

New Members

One new member has joined LPS since the last meeting. A warm welcome to Michael Tuffield.

The LPS Affiliate Program

The following companies have offered LPS various programs for the club and anyone who uses the special **Affiliates** link provided on the website to make purchases. Make sure to use the links **each time you order**. Otherwise, you and LPS will not receive the benefits of the program each company offers.

- ◆ Adorama
- ◆ Feisol
- ◆ MindShift Gear
- ◆ Red River Paper
- ◆ Think Tank Photo
- ◆ Topaz Labs

Click on **Affiliate Program** on the LPS.CC website home page.



Suggestion Box

Suggestions or comments concerning the newsletter or the club can be [submitted here](#), which in reality is an email to the editor. Your email will be forwarded to the appropriate board member. Thanks for your input!

Competition Corner

BY LORIE SMITH
COMPETITION@LPS.CC

April Competition

Open Projected
Travel Projected
Monthly Topic: Weather

Submission Deadline

Before Midnight, Monday, April 6

Please keep the judging criteria in mind:

Impact and Viewer Interest—"Wow" factor is the nebulous quality where an image "pops." This subjective aspect of judging should not preempt the technical or composition aspects of an image.

Composition—Good composition is a pleasing arrangement of the elements in an image. There are many guidelines for good composition that judges may consider.

Technical Quality—This includes sharpness, focus, color, tonal scale, contrast, appropriate depth of field and other qualities. Consideration is also given for the effect the photographer was trying to achieve such as high key, multiple exposure, or selective focus.

Monthly Topics—The subject matter should be related in some manner to the topic. While there are no formal deductions or penalties, judges may reduce their overall score if they feel the image does not align with the monthly topic. With that said, creative interpretation is encouraged.

Open Projected—The image must begin as a photograph. From there, it is up to you. Any photograph may be entered in the Open Projected category.

Whether the Weather

Weather is a constant, whether wet or dry, hot or cold, windy or quiet, but when a photographer thinks of weather, most often we envision the dramatic. And why not? Nothing adds more to the mood of an image than the quality of light provided by rain, snow, fog, mist, or storm clouds. Although a photograph centered on the theme of "weather" can include people or animals in the photo, it is the weather itself that is the main character. Colorado is certainly blessed with an abundance of different weather conditions, many times changing during the course of a day. For inspiration for the April competition monthly topic, read Octavio Noda's article in the March issue of InFocus.

2020 LPS Competitions

In addition to the monthly topics, each monthly competition includes Open Projected and alternating Nature Projected and Travel Projected.

May—Monthly Topic: Spring has sprung!

June—Monthly Topic: Pictorial Projected Monochrome

July—Monthly Topic: The Sporting Life

August—Monthly Topic: America the beautiful

September—Monthly Topic: These are a few of my favorite things

October—Monthly Topic: Abstract

November—Monthly Topic: Fall colors

Using the LPS Website

Did you know that you can view photos from past competitions on the LPS.cc website? Select **Competitions>Competition Results** (don't click on Year-to-date in the dropdown). Under **Competition List (Click here to show or hide options)**, you can look at photos from previous months and years by choosing an earliest date (the earliest competition list currently is July 2018). Then just click on **Select** for any of the competition categories/dates and either see only the Best of Show and Award of Merit photos, or click on the box **Display all images**. Hover the cursor over individual photos and in many cases you can see the shooting data; click on the image to see it enlarged. You can also read the critiques, when one has been provided. Another option to see award-winning images is available under **Galleries>Competition Awards & Winners**. It is not only interesting to see how images were ranked in previous competitions but it can also be helpful in selecting your own images for competition.



Competition-Level Advancement

No members advanced after last month's competition, but many are a half point away from their next step! Despite the COVID-19 restrictions, our monthly competition will go on as usual. Judging results will be available on the LPS website as soon as judging is finalized. (No need to wait until Tuesday morning following the meeting date.)

Keep Focusing!

Even with Larimer County's recent "stay-at-home" order as of March 26, you aren't restricted from hitting the many trails and open spaces in our beautiful Front Range for wildlife and landscape photos. Just keep your distance from other hikers/photographers!

When you are stuck at home, take the time to learn a new post processing technique. Many online classes are offered for either a single session or an entire multi-lesson class; some are scheduled webinar sessions and some are downloadable to watch at your convenience. Here are a few sites to check out: CreativeLive.com; lightstalking.com; PictureCorrect.com; digital-photography-school.net; DIYPhotography.net; and photographymad.com—just to name a few!

There are many free YouTube videos that will take you through techniques and info about photo equipment step-by-step. And if you are an Adobe subscriber, don't forget about online tutorials offered for Photoshop and Lightroom. Then go through your photo archives and find gems whose hidden beauty can be brought out by some additional work.

Member Participation

To maintain interest and involvement in your photography, LPS is offering several avenues for member participation.

- * Check out the new members' choice contest, organized by Lorie Smith, our competition chair. See the details on this page.
- * Be sure to read the information about Octavio Noda's Home Indoor Photo challenge on page 6.
- * Post a photo a day in the LPS Facebook group. A post of only one photo is more likely to be seen than one with multiple images and will prevent a deluge!

Members' Choice Contest

The COVID-19 virus may prevent us from getting together in person, but as an organization, we are committed to keeping our community engaged. To that end, we would like to offer a little something different. We are holding a special photo contest: LPS Members' Choice!

The rules are simple:

Submit one of your images that you feel is interesting, evokes a positive feeling, portrays beauty, or is uplifting. It can be nature or portrait, street photography, travel, or still life. It can be an abstract or a monochrome. In other words, totally open! As usual, don't submit images of other's art.

Your image **should not** be one you have submitted to previous competitions. (Let's save that for our December competition). Any type of post processing is acceptable.

The judging is also simple:

We will use an option for online voting that our current website supports. Every member who wants to may vote for a favorite image. One person, one vote. During the voting period images will be displayed with a title but not with its artist's name. We will not divide images by our current competition levels. Use your vote for an image that makes you smile, feel good, or just say "wow"—set your own criteria!

Once voting is closed:

The top 3 vote-getters will be recognized, and we will announce 1st, 2nd, and 3rd place winners, without showing any scores. *All images* that were submitted will be shown on the home page of the LPS website until the regular monthly competition for May is completed.

Wins will not count toward movement from one competition category to the next level.

First place will receive a \$15 Visa gift certificate, second place gets \$10, and third place gets \$5. Prizes are donated, so there is no cost to the club. If we have ties, duplicate awards will be given.

When the LPS Members' Choice competition opens, an email will go out to all members with specific instructions about how to submit images, so if you've never done it before, don't worry! We'll walk you through it. When competition closes, another email will go out to all members with voting instructions.

We will open competition the week of April 13 and leave it open for 7 days. Voting will also then be open for a week. Results will be published shortly after voting closes.

Each one of us has images that we feel good about, that we're proud of, that we worked hard to get. We are hoping that every member will participate and share yours with all of us!

Facebook Group

You are invited to post your photos in the LPS Facebook group in a new One-a-Day feature. No voting, no awards, just a way to keep shooting and to share some of your photos. Join the private LPS group at <https://www.facebook.com/groups/237033251716/> and then start posting—only one image per post for this feature, please, but feel free to post every day!



CORONAVIRUS GOOD FOR HOME PHOTOGRAPHY

By OCTAVIO NODA

PROJECTIONIST@LPS.CC

The coronavirus prevention suggests staying in home to be safe, so this is your opportunity to try your skills in home photography. If you look around your home, you will find numberless award-winner picture subjects. Not only eggs, fruits, and vegetables offer many possible outstanding compositions but also details from many small objects. Look around your home like a detective and you will be surprised how many exceptional photo possibilities are in your home. The pictures in this article are samples of the many takings on days when you are forced to be at home.



Octavio's Challenge

If any members would like to participate in a home indoor photo competition, send a picture (one photograph per member) by March 31 to o.noda1928@gmail.com. Octavio is offering an award of a book or a DVD for the three top photos, and the photos will be published in the May InFocus newsletter. The photo should be taken after March 21 to fit the spirit of this competition, so don't just pull something from your archives!



Third Monday Photo Review

BY ARDETH CARLSON

NEWSLETTER@LPS.CC

In addition to speaker presentations, hands-on learning experiences, and field trips, LPS also provides photographers with the opportunity to participate in image critiques and informal discussion of their photographs in monthly Third Monday Photo Review sessions. (Yes, that's the third Monday of every month!)

The group is facilitated by LPS mentor Mike Wilcox, who projects submitted photos onscreen and leads the discussion. Mike's abilities and knowledge as a professional photographer enable him to provide very helpful analysis of the images, while being open to divergent opinions from the other photographers. Attendance varies, generally 15 to 20 people at different levels of experience and differing types of photography. Submission of photos is not required, and nonmembers are invited to observe.

In a recent meeting, Mike made some important observations regarding image analysis. Judging, as members of a photo club most often think of analysis, involves comparing a photograph to a standard and how well it meets the standard. In the judging venue, images, of necessity (it is a competition!), are ranked in an order of the judge's perception of excellence in a number of different areas, including impact, technical excellence, composition, and post-processing quality.

Although strictly speaking the terms "critique" and "criticism" can mean essentially the same thing, a critique is considered to be a more or less objective analysis of an image, including both positive and negative comments and suggestions for ways to improve the image. Criticism is apt to have a more negative connotation, the pointing out of flaws and faults, which often feels more personal and offensive.

For those who are interested in the learning experience of (gentle) critiques without worrying about scores or that awful moment when your competition photograph is ranked last, check out the Third Monday Photo Review meetings, temporarily to be held online from 6–8 p.m., until further notice. You can submit up to three photographs in the Submit Images to Competitions menu on the LPS website. It is expected that participating members can still share in discussion via GotoMeeting.

Call for Entries

2020 National Fine Art Show

The Lincoln Gallery and Thompson Valley Art League are making a call for entries for the 2020 National Fine Art Show. There are six categories, including photography. The deadline for entries is April 6.

There is a \$45 fee for up to 3 entries and \$10 for each additional, up to a maximum of 6 total entries. Entries will be only be accepted online through CaFE' (callforentry.org).

Entries must have been completed within the last 3 years and must not have been accepted to previous Lincoln Gallery or Thompson Valley Art League juried shows. All artists will be notified by email of the juror's decisions by April 17. For more detailed information on submitting entries for the fine art show, use the following link: https://artist.callforentry.org/festivals_unique_info.php?ID=7385

If COVID-19 restrictions have been lifted or lightened, the exhibition will run from May 1-29, with the Artists' Reception and Awards Presentation on Friday, May 8. This show coincides with the nationally acclaimed Governor's Art Show, which runs from April 25–May 31, at the Loveland Museum Gallery, located across the street from the Lincoln Gallery.

JOIN THE CLUB

If you are reading the newsletter as a non-member and would like to join the Loveland Photographic Society, go to the main page on the LPS.CC website and click on **Membership > Join or Renew**. Current annual dues of \$35 will go up to \$45 as of May 1.

Travel Photo Competition Guidelines

The board of PSA will be passing updated guidelines for competition photos in the Travel Photo division. Because one of the goals of the LPS board in including Travel Projected as a competition category every other month is to provide our club facilitator Rich Krebs with more options for LPS submissions to the PSA competition, it will be helpful for our members to know and understand the PSA guidelines, which will also be applicable to LPS competition photos. The definition and guidelines are reprinted in their entirety on pages 14 and 15 of this InFocus newsletter.

Member Submissions Request

Many LPS members travel extensively, both in the U.S. and internationally. For an upcoming issue or issues, you are invited to share your experiences, as well as tips for traveling with photo gear. What equipment do you usually take, what can't you do without, and how do you keep your valuable cameras, lenses, etc., safe from airline abuse? Stories about successes, disasters, and do's and don'ts are all welcome! Send to the InFocus editor at Ardeth.Carlson@gmail.com.

PSA Pictorial Print Results Round 2

Our club improved in the standings within the Pictorial Print division of the PSA interclub competitions at Round 2. In large color, LPS advanced from 3rd to 7th; in large mono, to 4th from 6th; in small color, remained in 5th; in small mono, moved to a three-way tie for third, up from 5th; creative altered reality, remained 1st but increased the lead from 1 point to 10 points! Five LPS participants received awards for their images in Round 2:

Large Color, 2nd, Alaska Brown Bear,
Jerry Chase

Large Color, Honorable Mention, Cat in
Morocco, J.R. Schnelzer

Large Monochrome, 3rd, The Old Crystal
Mill, J.R. Schnelzer

Small Color, 1st, Friendly Neighborhood
Red-Tail, Dan O'Donnell

CAR (Creative Altered Reality), 1st, Swept
Away, J.R. Schnelzer



Alaska Brown Bear—Jerry Chase



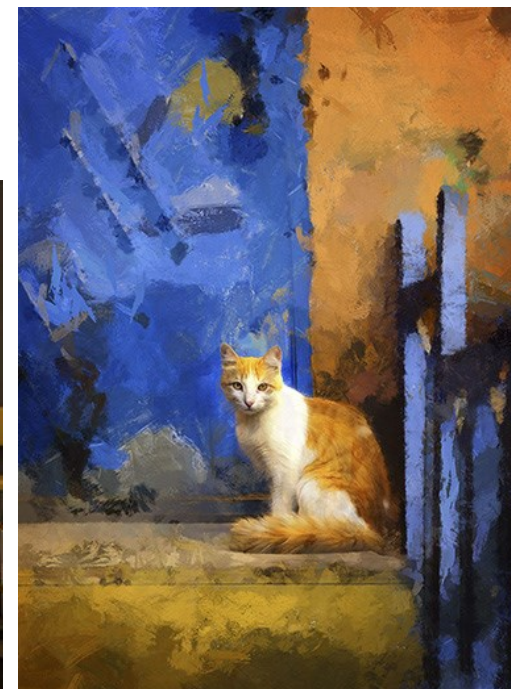
Friendly Neighborhood Red-Tail—Dan O'Donnell



The Old Crystal Mill—J.R. Schnelzer



Swept Away—J.R. Schnelzer



Cat in Morocco—J.R. Schnelzer

PSA Nature Division Interclub Competition

In round 2 of the 2019-2020 Nature Division interclub competition, LPS had two award winners, with Jeanie Sumrall-Ajero receiving an Award of Honor for "Rocky Mountain Pileup" and Bob Smith an Award of Honor for "Great Grey Owl Shake." LPS also improved our club standings in the competition. In round 1, our club tied for 6th place of 21 clubs; round 2 found us at 5th place of 22 participating Group B clubs. The deadline for entries in round 3 is April 15.



Rocky Mountain Pileup—Jeanie Sumrall-Ajero

PSA PHOTO FESTIVAL REGISTRATION

The 82nd Annual PSA Photo Festival is planned to be held in Colorado Springs from September 30 to October 3, 2020. Registration will open on April 1; find information about the festival at: <https://psa-photo.org/photo-festival-2020/>, with instructions for early-bird registration. There are assurances that refunds will be made in the event of festival cancellation.

MEMBER ORGANIZATION



Great Grey Owl Shake—Bob Smith

If you are interested in having an image considered for future rounds of the PSA interclub competitions, here are the LPS contacts:

Nature: Ardeth Carlson

Pictorial Print: Lisa Schnelzer

Travel: Rich Krebs

Round 2 Results PSA Travel Division

In PSA's Travel Division interclub competition, LPS member Guy Turenne received an Honorable Mention for his photo "Mt. Moran Tetons." This April issue of InFocus includes an updated definition of travel photo for PSA competition, with examples of do's and don'ts for this category. It would be worth a read if you are interested in submitting an image for consideration. There is one final round of competition, with entries due before April 15.

Mt. Moran Tetons—Guy Turenne



Member Profile

Kurt Flock

My photography started probably in 1981. I remember Robert Waxman Camera had a weekly ad in the paper on Saturdays. On one of those Saturdays my dad said let's go down to Denver and visit Robert Waxman. I knew my uncle and cousin had Canon AE-1's, and that's what I thought I was going to purchase. My dad and I were browsing through the store, and my dad pointed to the Nikon section and said, "Nikon—those are the Cadillac of cameras." So I took my dad's advice and purchased a Nikon FM. Guess what brand I have had ever since?! The following summer, I spent two weeks traveling through England, Scotland, and Wales, and took many photos on film. I wish I knew then what I know now about photography, for I think my photos from that trip would have been much better. Live and learn!

Fast forward to 2010 when I joined LPS. I have looked forward to the second Monday of each month since then, and my photography has improved tremendously through monthly topics, workshops, and outings with other members. Oftentimes when submitting photos into competition I would think to myself, wow, that's a pretty nice photo. Then when the scores show up alongside other members' submissions and mine didn't score so well, I could instantly understand why. LPS has many great photographers, and we all have something to learn from each other.

Most of my photos when I started were snapshots of family, nature, landscapes, and wildlife. Until recently I didn't like the way my portraits would look with flash so didn't take many portraits. Now I enjoy taking a variety of photos from nature, landscapes, wildlife/animals, and including portraits.



My wife and I frequently go "raptor" looking for birds of prey around Fort Collins, Loveland, and Windsor. Often I can get a great shot right out our back door of hawks or owls and also some squirrels and rabbits, which to me are not as interesting as the birds.

I was born and raised right here in Loveland. I did spend one year of college in Gunnison, Colorado, at Western State College. I graduated from UNC in Greeley, and a couple of years after that I accepted a position with Group Publishing, Inc., and worked there for 32 years. Last June I made a change and went to work for Colorado State University Foundation. My wife and I will be married for 35 years this year. We have three grown kids. Our oldest lives in Omaha with her husband. Our second will graduate this spring from the University of Wyoming and will be teaching in Fort Collins next fall. Our son is a junior at the University of Wyoming, studying physiology.

I/we have always enjoyed the outdoors of Colorado. In my spare time I like to hike, fly fish, bike, and golf when I'm not photographing.

Kurt is a past president and current vice president of LPS.



Raptor

Brown Eggs



Sydney



Shambhala Mountain Center

[Thank you to Ed Ogle for this suggestion and photos]

“A favorite location for me is Shambhala Mountain Center. It is about a one-hour drive from Loveland and near Red Feather Lakes. It's very unusual. It's also good for night sky photography due to the dark skies. You can eat lunch or dinner there for a small donation, and visitors are very welcome.”

Shambhala Mountain Center is a Buddhist retreat center comprising 600 acres of forest, meadows, and valleys that is generally open to day visitors. One attraction for photographers is the Great Stupa of Dharmakaya, a 108-foot-high structure that is an example of Buddhist architecture. It is open daily to visitors from 9:00 a.m. to 7:00 p.m., free of charge. The Stupa can be accessed directly without stopping at the registration or downtown area. The hiking trails are open from 9 a.m. to sundown.

Ed notes: “The Stupa is open all the time if you let them know in advance what you want to do and be respectful that it is a religious shrine. The outside lights go off at around 10 p.m., which is when the night sky photography opportunities begin. Parking at the Stupa is limited, so if a large group goes, it's best to park in the official visitor parking lot, which is about a quarter mile walk.”

For more detailed information, check out the website:

<https://www.shambhalamountain.org/visit-us/>



Fall Colors—Ed Ogle



Greenhouse—Ed Ogle



Nighttime—Ed Ogle

Your Favorite Front Range Photography Location

Where do you love to take your camera in the Colorado Front Range? Share one of your go-to northern Colorado spots with other LPS enthusiasts! Send an article for the newsletter to Ardeth.Carlson@gmail.com, or just send some basic info to be included in a future issue, and perhaps include one or two photos from that location.

10TH ANNUAL NORTHERN COLORADO YOUTH SHOWCASE 2020

Loveland Photographic Society

The youth showcase for high school students is sponsored by LPS and Jax Mercantile. This year there were 200 digital and 100 print images submitted to the competition, which were judged by Ardeth Carlson, Bob Carrier, Dan Kozlowski, and Ruth Sprain. The photographers represented 8 high schools: Frederick, Loveland, Monarch, Mountain View, Poudre, Severance, Silver Creek, and Windsor. The contest offers ribbons for first through fourth place winners in each category, and first place winners will also receive a \$25 gift card from Jax. In addition, LPS selects photos from this competition to submit to the PSA Youth Showcase, with results expected to be announced in May. A slideshow of showcase photos will be posted in the Galleries on the LPS website.

The Best Senior Award winner receives a \$250 cash prize from LPS. Thirteen seniors had award winning photos. A point system determined which seniors did the best, with scores ranging from 1 to 12 points. The clear winner was Amber Esquivel from Frederick, with 12 points and an average photo score of 24.75 points.

Other notable seniors include Andrew Rivera, Frederick; Hannah Burton, Monarch; Hailey Bergstrom, Loveland; and Kelsey Skokan, Silver Creek.

First place winners (photos on page 13):

Architecture

Digital: Kelsey Skokan, Silver Creek
Print: Jackson Cooper, Windsor

Color Choice

Digital: Amber Esquivel, Frederick
Print: Carmen Vazquez, Frederick

Landscape

Digital: Rachel Morey, Windsor
Print: Athena Chagolla, Frederick

Monochrome Choice

Digital: Kayleen Lindholm, Severance
Print: Andrew Rivera, Frederick

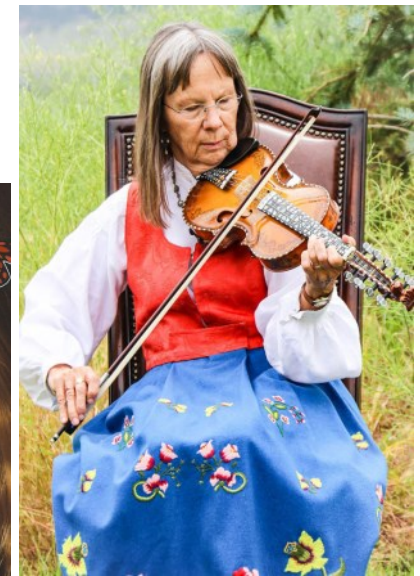
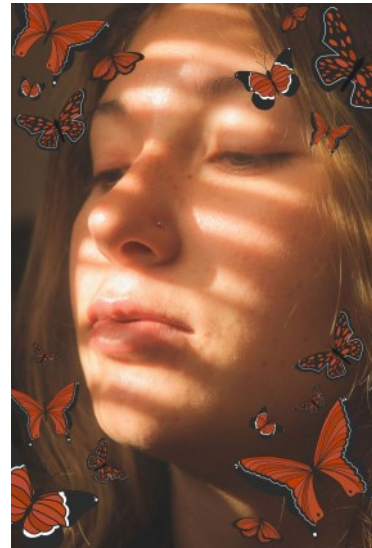
Photojournalism

Digital: Andrew Rivera, Frederick
Print: none awarded

Portrait or Animal

Digital: Hailey Bergstrom, Loveland
Print: Emmanuel Quintana, Frederick

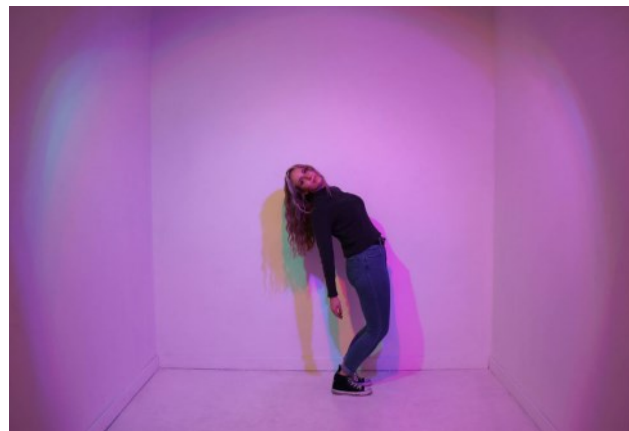
Overall, there were many excellent photographs, but the judges felt there was some lack of understanding of what constitutes a photojournalism image, and even some entries as landscapes were questionable as to whether they fit the category. The youth showcase is intended to encourage interest in the field of photography in all its elements, and it is hoped that these young photographers will take every opportunity to expand their knowledge and skills.



Finch's Melody
2nd, Portrait—Print

Butterfly Effect (1st Place)
1st, Color Choice—Digital

Photographs © Amber Esquivel



Purple Haze
3rd, Color Choice—Digital

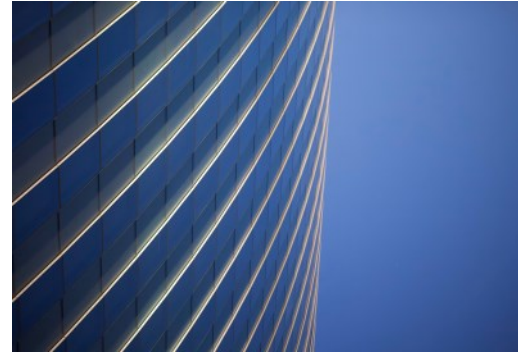


Unbroken Bull
2nd, Monochrome Choice—Digital



Donostia—Kelsey Skokan
Architecture, Digital

Captivity—Hailey Bergstrom
Portrait, Digital



Seamless—Jackson Cooper
Architecture, Print



BW Streets—Andrew Rivera
Monochrome Choice, Print



Cold Stare—Kayleen Lindholm
Monochrome Choice, Digital

Colorado Mountains—Rachel Morey
Landscape, Digital



Seeds—Andrew Rivera
Photojournalism, Digital



Milk Bath—Carmen Vazquez
Color Choice, Print

Sky on Fire—Athena Chagolla
Landscape, Print



Squirrel and the Apple—Emmanuel Quintana
Portrait or Animal, Print

**2020
10TH ANNUAL
YOUTH SHOWCASE
WINNERS**



Guide for Judges and Chairs of PSA-recognized Exhibitions with Photo Travel Sections

Photo Travel Division

January 2020

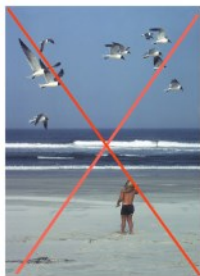
This guide should be reviewed by the exhibition chair, the PT section chair and the PT judges before any judging.

Purpose of the Photo Travel Definition

The PSA Photo Travel Division (PTD) is **reality-based**, like the PSA Photojournalism and Nature Divisions. The objective of PSA Photo Travel (PT) is to show the world **as it is found naturally**. The purpose of the PT Definition is to guide PT photographers towards making images that show **how our world really is**, rather than to arrange it and to manipulate images to obtain the “best” photographs. **PT images should be a true record of that scene. The PT Definition is also a guide for exhibition judges to ensure that images that violate the definition are not accepted.**

Below are the individual sections of the PT Definition **in red**, illustrated with examples and comments.

A Photo Travel image expresses the characteristic features or culture of a land as they are found naturally. There are no geographic limitations.



In the case of landscapes or buildings, it is not necessary to know “where the place is.” The image only needs to have identifiable features so that the place can be recognized by someone visiting it.



Images from events or activities arranged specifically for photography, or of subjects directed or hired for photography are not appropriate.



The photo below confirms that the picture of the boys throwing water is a “setup,” it is staged.

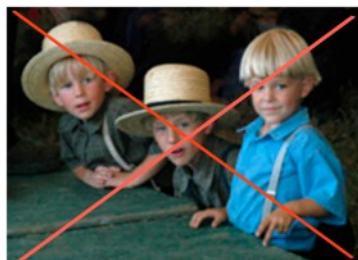


This is not the normal behavior of these fishermen. It’s a “setup” for photographers.



Setups can be identified when many images of the same or similar scenes are submitted to exhibitions, or when they depict unnatural actions or behavior by the people shown in the photo.

Close up pictures of people or objects must include features that provide information about the environment.



The purpose of this requirement is to eliminate photographs that could have been taken in a studio instead of the natural environment of the person(s) shown in the photograph.

Techniques that add, relocate, replace or remove any element of the original image, except by cropping, are not permitted.



Image manipulation by removing, moving or adding objects is often difficult to spot and to prove. When judges suspect a violation that should be investigated.

The only allowable adjustments are removal of dust or digital noise, restoration of the appearance of the original scene, and complete conversion to greyscale monochrome. Other derivations, including infrared, are not permitted. All images must look natural.



Oversaturated, overly sharpened and other images with unnatural artifacts, such as halos or strong vignetting, should be given lower scores in judging. Extreme fish-eye images that are distorted do not appear natural. Partial desaturation of areas of the image does not look natural and is not allowed.

Entire PT Definition:

A Photo Travel image expresses the characteristic features or culture of a land as they are found naturally. There are no geographic limitations. Images from events or activities arranged specifically for photography, or of subjects directed or hired for photography are not appropriate. Close up pictures of people or objects must include features that provide information about the environment. Techniques that add, relocate, replace or remove any element of the original image, except by cropping, are not permitted. The only allowable adjustments are removal of dust or digital noise, restoration of the appearance of the original scene, and complete conversion to greyscale monochrome. Other derivations, including infrared, are not permitted. All images must look natural.

Additional Comments:

Judges of PT exhibitions should ask themselves the following questions when judging each image:

1. Does this image meet the PT Definition, in particular, does it look natural?
2. Is this image the result of a setup (i.e. is it staged), beyond reasonable doubt?
3. Does it meet the definition of the theme, if the exhibition has theme sections (e.g. are landscape images submitted to "People" sections, or people images submitted to "Scapes" sections?)
4. Images that are being judged as not meeting the PT Definition should be scored lower, regardless of their photographic merit. However, disqualification should be used only in extreme, unambiguous cases.

For additional information, contact Nadia Filiaggi, EPSA, PTD Exhibition Standards Director, ptd-esd@psa-photo.org

Authorship: Tom Tauber, APSA, EPSA
Assistance: Lynn Maniscalco, Hon FPSA, EPSA
With contributions, approval and distribution by PT Division