

## Club Meetings

Until further notice, all meetings will be held online with the GoToMeeting app using the following link:

<https://www.gotomeet.me/LPhotographicSociety>

**Access Code: 364-857-325**

**Tuesday, May 5**  
**LPS Board Meeting**  
*Open to All*  
6:30 PM

**Saturday, May 9**  
**Photo Bull Session**  
8:30–10:30 AM

**Monday, May 11**  
**Monthly Club Meeting**  
Social Time  
6:00 PM  
**Club Meeting**  
6:30-8:30 PM

**Monday, May 18**  
**Photo Review Session**  
6:00-8:00 PM

Join the meeting via desktop computer, laptop, or smartphone to see and interact with other participants. Please mute your microphone except when you are speaking to avoid extraneous noises online.

## May Meeting Agenda

### Start-to-Finish Post-Processing Presentation by Ben Strauss

**BY JEANIE SUMRALL-AJERO**  
[PROGRAMS@LPS.CC](mailto:PROGRAMS@LPS.CC)

Ben Strauss is back! After his presentation on Instagram at our February meeting, Ben asked me if LPS members might be interested in a post-processing presentation. Of course I answered “Yes!” since that was one of the repeated requests in last year’s club survey.

Ben’s presentation is meant to show you what’s possible with post-processing. It will be jam-packed with both basic and advanced Lightroom and Photoshop processing techniques, so there will be something for everyone. You will get a front row seat to Ben’s entire workflow used to transform a RAW file to a portfolio-worthy photograph. You will learn and apply a number of techniques, including but not limited to selective dodge and burning, color dodging, targeted light bleeding, hand painted vignetting, selective color adjustments, color injection, selective temperature adjustments, and so much more! Are you ready to take your photography to the next level?

I had originally scheduled Ben for our July meeting, but I thought an online format might be perfect for his presentation since you will all have a front-row seat to your screens. I highly recommend that you view this presentation on the largest screen you have, i.e. a computer or laptop. If your computer doesn’t have a webcam, we will miss your smiling face, but I think you will appreciate seeing the details of Ben’s presentation. You will be able to ask questions through the “Chat” feature of GoToMeeting, and we will record Ben’s presentation so that you can refer back to it as many times as you’d like.

Ben Strauss began his journey into the creative and expressive world of photography nearly three years ago. Already being an outdoor enthusiast (backpacker and mountain biker), he was immediately hooked on landscape/nature photography. Ben grew up in Loveland, Colorado, and recently completed a master of science degree in mechanical engineering at Colorado State University. His love of nature ultimately led to him pursuing an advanced engineering degree, allowing him to work with renewable energy technologies.

## LPS Board of Directors

PRESIDENT  
— KEVIN FETTIG  
VICE PRESIDENT  
— KURT FLOCK  
TREASURER  
— SANDY LOUCKS  
SECRETARY  
— SCOTT SPRAIN  
PAST PRESIDENT  
— TONY PARISO  
PROGRAMS  
— JEANIE SUMRALL-AJERO  
MEMBERSHIP  
— SANDY LOUCKS  
COMPETITION  
— LORIE SMITH

## LPS Officers

FIELD TRIPS  
— LYNNE LEWIS  
GREETING HOST  
— SHELLY KELLY  
MENTOR  
— MIKE WILCOX  
PROJECTIONIST  
OCTAVIO NODA & MIKE WILCOX  
FORUM DIRECTOR  
— INGRID JACOBSON  
PUBLICITY  
— OPEN  
SCHOLARSHIPS  
— RUTH SPRAIN  
NEWSLETTER  
— ARDETH CARLSON  
WEBMASTER  
— BILL SHANAHAN  
PSA REPRESENTATIVE  
— LISA SCHNELZER  
FACILITY SETUP  
— KURT FLOCK

# InFocus

The e-Newsletter for the  
Loveland Photographic Society

## Mailing Address

P. O. Box 7604 • Loveland, CO 80537

## Public Facebook Page

[https://www.facebook.com/  
LovelandPhotographicSociety/](https://www.facebook.com/LovelandPhotographicSociety/)

## Members Only Facebook Group

[https://www.facebook.com/  
groups/237033251716/](https://www.facebook.com/groups/237033251716/)

### Submitting Pictures for the Monthly Competition or Photo Review Session

- Log on to the LPS.CC website
- Mouse over the Competitions dropdown on the Home Page.
- Select menu item:  
**Submit images to a Competition**
- Select the Competition category or the Third Monday Photo Review.
- At the bottom of the screen, click on **Upload images into the Competition.**
- Then click on the button **Select** which will open a window on your computer to select an image.
- Click on **Save Images and Proceed to Edit Page.**
- Type in a title and click on **Save any changes and return to original page.**
- You can replace any photo, up to the submission deadline, if desired.

The monthly competitions allow a single image per category. The photo review session allows up to three images—include the letters A, B, and C in the title of the images; this will allow us to limit the number of images if it is necessary.

*Continued from previous page*

### Ben Strauss—Artist Statement

Previously, I remember having a somewhat negative perception about landscape photographers, in that they spend too much time behind their lens and miss out on what's happening in front of them. From my personal experience in the last three years this couldn't be further from the truth, and at a risk of sounding cliché, nature photography has changed my perspective of the world around me. I feel like I've acquired a higher level of attention to detail in my surroundings, and there is something so thrilling about hunting for that perfect composition. I've also found it really slows you down and for me is a bit of a grounding mechanism. Before photography, I don't ever remember spending over an hour observing how the continually changing sunlight alters the dynamics of one single landscape. There is so much unexpected detail to be found in beautiful places and so much beauty to be found in unexpected places. In the end, my initial perception of photographers was completely backwards. I hope my passion and discoveries bring you as much joy as it does me!

### Contact

bstrauss23@gmail.com  
@benstraussphotography  
[www.benstraussphotography.com](http://www.benstraussphotography.com)

### New Members

A warm welcome to new LPS member Terry Walsh, who joined in March.



*The Loch—Ben Strauss*

### UPDATED ACCESS CODE

Please note the meeting access code (364-857-325) on page 1 of this newsletter, which will be effective for all online meetings until further notice. This updated code was emailed to all members by Mike Wilcox a couple weeks ago, but some members missed that notice. The editor apologizes for miscommunicating the previous meeting code!

# Competition Corner

BY LORIE SMITH  
[COMPETITION@LPS.CC](mailto:COMPETITION@LPS.CC)

## May Competition

Open Projected  
Nature Projected  
Monthly Topic: Spring has sprung!

## Submission Deadline

Before Midnight, Monday, May 4

## Please keep the judging criteria in mind:

**Impact and Viewer Interest**—"Wow" factor is the nebulous quality where an image "pops." This subjective aspect of judging should not preempt the technical or composition aspects of an image.

**Composition**—Good composition is a pleasing arrangement of the elements in an image. There are many guidelines for good composition that judges may consider.

**Technical Quality**—This includes sharpness, focus, color, tonal scale, contrast, appropriate depth of field and other qualities. Consideration is also given for the effect the photographer was trying to achieve such as high key, multiple exposure, or selective focus.

**Monthly Topics**—The subject matter should be related in some manner to the topic. While there are no formal deductions or penalties, judges may reduce their overall score if they feel the image does not align with the monthly topic. With that said, creative interpretation is encouraged.

**Open Projected**—The image must begin as a photograph. From there, it is up to you. Any photograph may be entered in the Open Projected category.

## Nature Photo Definition

A factor in LPS's change of competition category from Traditional to alternating Travel Projected and Nature Projected was to provide more options for our club entries in those categories of the PSA interclub competitions. To help our members understand the PSA rules, the April issue of InFocus contained a reprint of the updated PSA Travel definition. PSA Membership Vice President Roy Killen has written a draft version of the Nature guidelines, available on his website: <https://www.roykillen.photography/nature-definition-explained>.

At the bottom of the linked page, select the individual subjects to follow up on the different aspects of the definition. One of the most helpful features in "Nature Subjects" is the inclusion of photos that illustrate do's and don'ts of entries in the Nature Division.

## Members Moving Up in Competition Level

**Congratulations to these LPS members who have advanced to the next level of competition:**

Sterling Brody to Intermediate  
Ed Ogle to Advanced  
Marvin Froistad to Masters  
Wesley Hunget to Masters 2  
Kristi Norman to Masters 2

## Open Projected Images

If you are a traditional photographer, LPS's Open Projected competition category provides an opportunity to think outside the box. In post processing, you can experiment with countless filters and presets to envision and create an image that is uniquely your own. The NIK filter collection plugins by DXO offer a variety of filter effects. Lightroom users have a wide range of presets to apply. Other software programs are also available, such as PhotoWhoa bundles which can work with Lightroom and Photoshop and Photolab apps for your smartphone. Experiment with effects like photo montages, spot color, or selective focus/blurring. If you want to stretch your creative photography chops, consider trying something that might be new to you, like surrealism:

<https://www.lightstalking.com/how-to-create-impressive-surreal-photos-a-beginners-guide/>

Caveat: you'll probably want to practice a new technique before submitting to competition!

## 2020 LPS Competitions

**In addition to the monthly topics, each monthly competition includes Open Projected and alternating Nature Projected and Travel Projected.**

**June**—Monthly Topic: Pictorial Projected Monochrome

**July**—Monthly Topic: The Sporting Life

**August**—Monthly Topic: America the beautiful

**September**—Monthly Topic: These are a few of my favorite things

**October**—Monthly Topic: Abstract

**November**—Monthly Topic: Fall colors



## In Search of Creativity

"If you stood five world-class photographers along the edge of the Grand Canyon and they all made a photograph, you would have five very different photographs. Each of them may be equally expressive, equally stunning, but they will all look and feel different. That difference between the images will be a few minor technical changes, but vastly more creative and expressive differences employed by each of the photographers. In this article I aim to show how various techniques can be used to deliver creatively different images and open the door to your individual expressive output."—Alister Benn

There are many online tutorials demonstrating specific photographic and post-processing techniques. Here is an excellent article on the website Picture Correct that discusses methods of expressing your personal vision to create compelling images:  
<https://www.picturecorrect.com/tips/in-search-of-creativity/>

## LPS Submissions to PSA Nature Division Competition

The director of the PSA Nature Division Interclub Competition has sent this advisory:

"In looking through the Round 2 entries, I notice more than a few images that had added borders of varying descriptions. Although our rules for ND do not directly address the addition of borders, their intent is plainly to restrict images to those that tell their story of nature without the aid of added pictorial elements...Please be aware that any added border or edge treatment beyond a simple white border may be disqualified by the judges if they find the edge treatment constitutes a 'pictorial element.'"

When members of LPS submit photos to be considered for our club's entries, please don't use any borders, to make sure there is no issue with possible disqualification.

## Acceptable Nature Photo Edits

The overarching rule governing photos submitted to the PSA Nature Division competitions is that the subject must be shown as it naturally appears, without adjustments that alter the pictorial content of the scene. To that end, **the following adjustments are acceptable:**

1. Cropping.
2. Adjustments that improve image quality without altering the content of the original scene, such as exposure, contrast, saturation, sharpening, and noise reduction.
3. Dodging and burning.
4. Editing that removes small elements that were not part of the original scene, such as spots caused by dust on a digital sensor or scratches on a scanned image (This does not include cloning objects in or out!)
5. High dynamic range (HDR) techniques and focus stacking, as the pictorial content of the individual images and the combined image is not being changed.
6. Adjustments that compensate for lens deficiencies such as distortion or chromatic aberration.
7. Gray-scale monochrome images (but no monochrome images with a color tint).
8. Use of camera techniques, such as the deliberate use of slow shutter speed to blur movement or the use of remotely or automatically triggered cameras.
9. Judicial use of artificial lighting such as flash, provided the image appears natural and the artificial light is not likely to disturb or harm the organism being photographed.

LPS members who would like to have their photos considered for one of our club's entries in the PSA competition should adhere to these guidelines.

## Member Submissions Request

Many LPS members travel extensively, both in the U.S. and internationally. For an upcoming issue or issues, you are invited to share your experiences, as well as tips for traveling with photo gear. What equipment do you usually take, what can't you do without, and how do you keep your valuable cameras, lenses, etc., safe from airline abuse? Stories about successes, disasters, and do's and don'ts are all welcome!

Please continue to send written articles or suggestions of places in the Front Range of Colorado where you love to shoot photographs. Include a couple of your photos taken at that location.

If you have received or know of LPS members who have received awards or special distinctions in photography contests, share that news in the InFocus newsletter.

Send your contributions to the InFocus editor at [Ardeth.Carlson@gmail.com](mailto:Ardeth.Carlson@gmail.com).

## JOIN THE CLUB

If you are reading the newsletter as a non-member and would like to join the Loveland Photographic Society, go to the main page on the LPS.CC website and click on **Membership > Join or Renew**. Current annual dues of \$35 will go up to \$45 as of May 1.



## Recap of the Cory Reppenhagen Presentation

By Jeanie Sumrall-Ajero

At our April meeting, our first to be conducted online, Cory Reppenhagen, a meteorologist with 9News, gave a presentation on photographing severe weather. He focused mostly on apps that he uses to predict and track storms as well as how to interpret the data to get in the best position to photograph the storms and stay safe. Cory graciously agreed to let us post a recording of his presentation to YouTube for anyone who missed it—or anyone who would like to view it again: <https://youtu.be/vSa2MpbN-1M> Feel free to share the link with others.

Also, Cory mentioned in his talk that he would love to see any weather-related photos you take. (He is mostly interested in current events given that he is a news person, i.e. no photos from your back catalog.) The best way to do that is to "tag" him on Facebook when you post a photo you think he might like. Tagging can be accomplished in the descriptive text that accompanies your photo on Facebook by typing "@Meteorologist Cory Reppenhagen." Actually, you shouldn't need to type all of that. Just make sure you type the "@" sign first, then start typing "Meteorologist..." and you should see a list of people/pages below what you are typing. If Cory's name pops up, just click on it to "tag" him

### Member Photos Featured

LPS Member Dan O'Donnell has 9 photos that are featured in the Loveland Open Space and Trails annual report: <http://www.cityofloveland.org/home/showdocument?id=51342>

### QUOTE OF THE MONTH:

"Photography is not supposed to be perfect. There are technical tools that we can use to improve our photographs, but they are only that: tools—not rules. Just like people, photos are technically imperfect—and yet that's what makes them so beautiful. Each photo is an impression of a moment in time that will never again be recaptured. And only you, from your unique viewpoint, have the ability to take that picture.

Some of the most famous photos, considered by many to be the best of the best, have imperfections! In fact, most of them do! Not only that, everyone has different tastes. Something that one person might call a 'problem area' might be the reason that someone else LOVES that exact same photo. Are you going to deprive dozens of people the enjoyment of your art simply because one person said 'this part isn't in perfect focus.' Screw focus! Seriously!"~*How to Find Your Unique Voice as a Photographer*, Tien Froggett

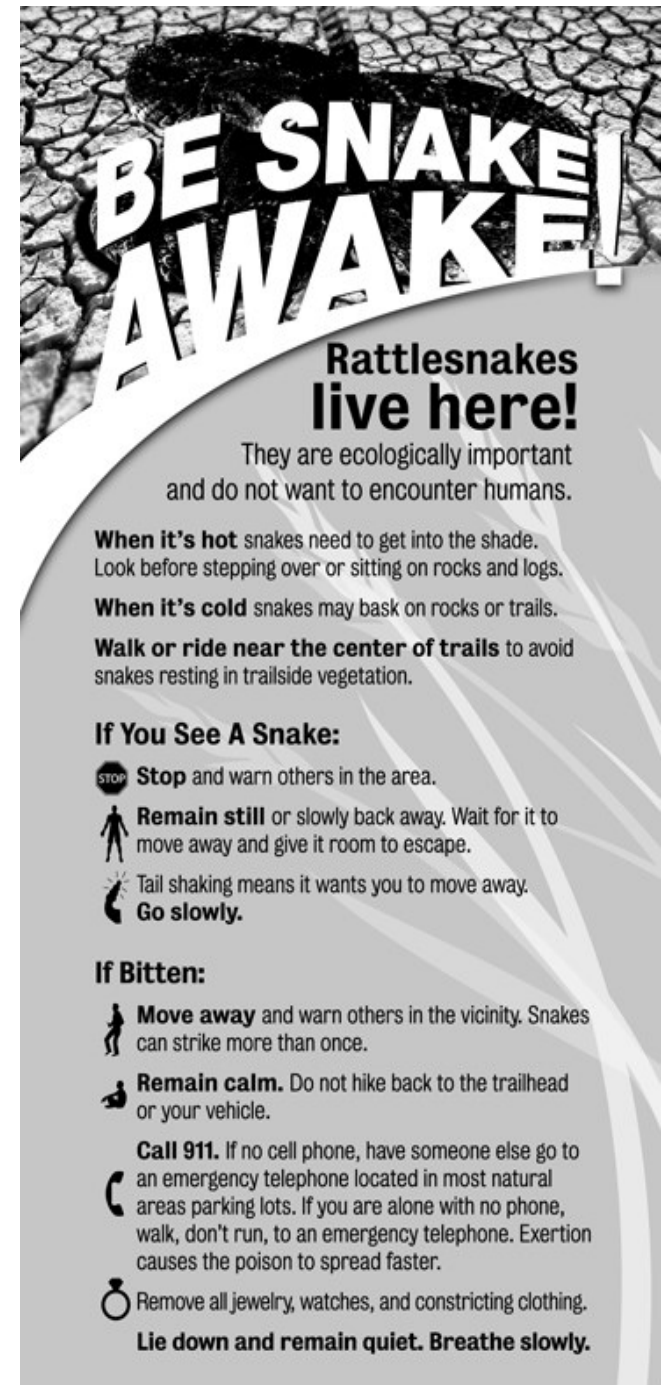
<https://www.picturecorrect.com/tips/how-to-find-your-unique-voice-as-a-photographer/>

### Fort Collins Natural Areas Regulations

#### Can I fly a drone in a natural area?

Drones, or any other radio controlled aircraft, are not permitted to be launched or landed in any natural area or operated within airspace 500 feet above ground level.

Natural areas are wonderful places to be with your dog and enjoy the outdoors. Use the [natural areas finder](#) to check which sites allow dogs.





## Photo Contest Winners

Last month, inspired by the statewide order by the Colorado governor for everyone to stay at home whenever possible, our projectionist and venerated LPS member **Octavio Noda** offered a challenge to use creativity in photographing something inside the home.

Four judges scored the entries:

Fred Kong, talented photo enthusiast, winner of several photos awards in state and international photo competitions; a member of the Kendal Camera Club of Miami, Florida, for many years.

Kathy Browne, master's degree in art and décor, with a successful home decoration business in Loveland; a member and photo judge of the Loveland camera club; conducts an international tour business with her husband.

Ron Browne, master's degree in art and design.; was an active member of the camera club in many capacities, designing the last newsletter logo of the camera club; travels extensively around the world.

José María Quera, a successful architect in Barcelona, Spain, now a Catholic priest; an accomplished photographer and world traveler.



First place: *Fried Egg*—Ardeth Carlson



Second place:  
*Flower*—Ruth Sprain



Third place:  
*Coffee Grinder*—David Van Riper

## Country Life Photo Contest

**J.R. Schnelzer** recently was the first-place winner in the landscape category of the 2020 photo contest, "Simply Colorado," of *Colorado Country Life* magazine. This year there were over 870 submissions in the four categories of the contest. J.R.'s photo "Old House on the Plains" is featured, with the other category winners, in the magazine and can also be viewed on the magazine's website at <https://www.coloradocountrylife.coop/simply-colorado-2020-photo-contest-winners/>.

*Colorado Country Life* is a monthly magazine published for rural residents and families of Colorado, especially those who receive their electricity from electric co-ops....Human interest profiles, recipes, gardening information, outdoor and home improvement features are a regular part of this consumer publication. *Colorado Country Life* is the magazine for the Colorado Rural Electric Association.

## 2020 National Fine Art Show

Out of respect for the health and safety of the artists, the gallery staff, and the patrons, the Lincoln Gallery has chosen to delay the opening of the National Fine Arts Show until September. The Loveland Museum/Gallery has also delayed their National Governor's Show until then in order to still have the wonderful foot traffic that both shows generate.

The exhibition will run from September 4 through October 2, with the Artists' Reception and Awards or People's Choice Award presentation on Friday, September 11. The nationally acclaimed Governor's Art Show at the Loveland Museum Gallery, located across the street from the Lincoln Gallery, will overlap the tail end of the National Fine Art Show.

## PSA Photo Festival Cancelled

**Message from Photographic Society of America, of which LPS is a member club:**

It is with thoughtful reluctance and much sadness that the PSA Executive Committee has made a decision to cancel the planned Photo Festival in Colorado Springs in September. This was a very difficult decision to make, knowing that the 2020 Photo Festival is highly valued and anticipated; but paramount to the decision was putting the health, safety, and peace of mind of our membership first. In the absence of a vaccine, our gathering, especially with many members in the high-risk category, would simply be accepting too much risk for all of us. Many other organizations, including the International Federation of Photographic Art (FIAP), have cancelled all their 2020 planned gatherings and events until more is learned about the virus and the pandemic.

## Member Profile

### Sandy Loucks

I think I was in 6<sup>th</sup> grade when I got my first camera—a Polaroid Land Camera. That was magic to take a picture and see it “appear” right before your eyes. In 9<sup>th</sup> grade I bought my first “real” camera, a Yashica. That thing took great pictures, indoors and out. In 11<sup>th</sup> grade, I bought a Pentax K-1000 that came with a basic lens. I also ponied up the bucks for a zoom lens (I think a 60-200). I constantly was in the yard taking pictures of the dog, plants, and bugs, or across the street at the baseball field taking pictures of kids playing ball. My senior year, on the yearbook staff, I was given the task of taking photos of all the sports teams. Our football team made it to the state championship, and I walked up to the entry gate at CU’s Folsom Field with my camera and long lens. I was getting ready to pay, and a guy at another gate called out, “The press enters over here!” I said, “Okay, thanks!” and walked right into the game without buying a ticket. Sweet!!

While attending Western State College in Gunnison, Colorado, I explored the entire Gunnison valley in my 1978 Ford Futura with my camera in hand. It was in Gunnison where I was introduced to extension tubes. A whole new world of macro photography opened up.

After I graduated from college in 1984, life got in the way and the camera was mostly forgotten about...until the advent of digital cameras. My first digital camera was a little Olympus point-and-shoot I bought to take with me on a cruise. About 2010 I was searching for a nicer digital camera that would allow me to swap lenses. Better yet would be if I could use my existing Pentax lenses, so I bought a Pentax Kx. It wasn’t until 2015, though, that I finally really wanted to learn what it could do. I found a photography workshop led by Andy Cook from Colorado Springs that had one spot left for the Oregon coast. That was my vacation that year

and lit the fuse for me to get back into photography. I’ve discovered that photo workshops for me are a great vacation. I’m single so I travel alone, but these workshops provide an instant camaraderie because we all share a passion for photography. There are 8-10 people in the group, none of whom I’ve ever met before, but within minutes of meeting, I have a common bond with each of them.

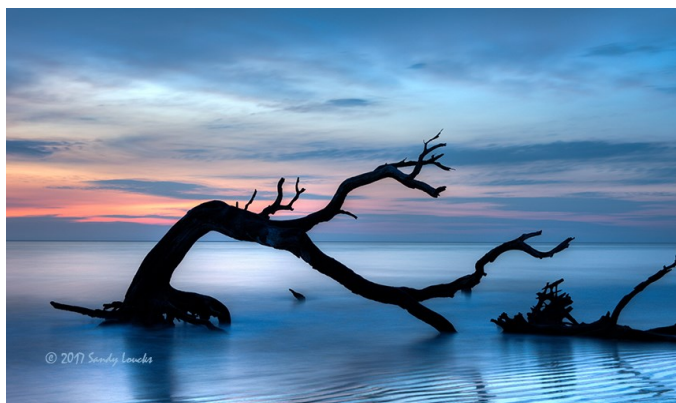
I shoot mostly landscapes but enjoy trying my hand at macro/closeup and wildlife. I hate shooting people unless they have no idea I’m anywhere near them.

I joined LPS in July 2016. I was a member of PSA (Digital Dialogue) but found I didn’t have the time to really participate so didn’t renew.

I display my photos on my website at [PrimeScenePhoto.smugmug.com](http://PrimeScenePhoto.smugmug.com).

I’m the administrative assistant/receptionist at the Ft. Collins Emissions Technical Center and make appointments for people whose vehicles have failed the emissions test two or more times and the repairs they’ve made so far have not fixed the problem. It’s a free service the state of Colorado provides.

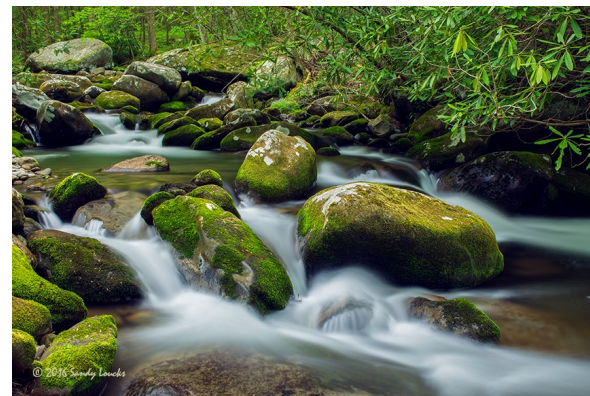
Almost 2 years ago I felt a prompting to make a quilt. Now I’ve made six and am working on number 7. I enjoy yard work and landscaping,



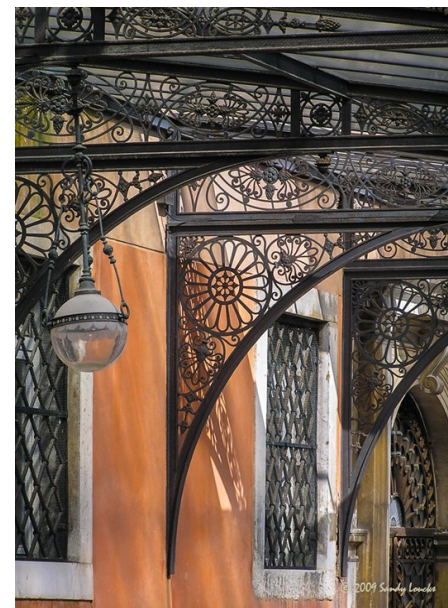
*Beach Monster*

and for some inexplicable reason I love building fence. I am an avid reader, and jigsaw puzzles are always enjoyable. At Christmastime I paint ceramic tree ornaments. I also enjoy old cars and have three cars—only one of which is old, a 1967 Cougar.

*Sandy is the treasurer of LPS.*



*Thunderhead Prong of Little River*



*Venice Ironwork*

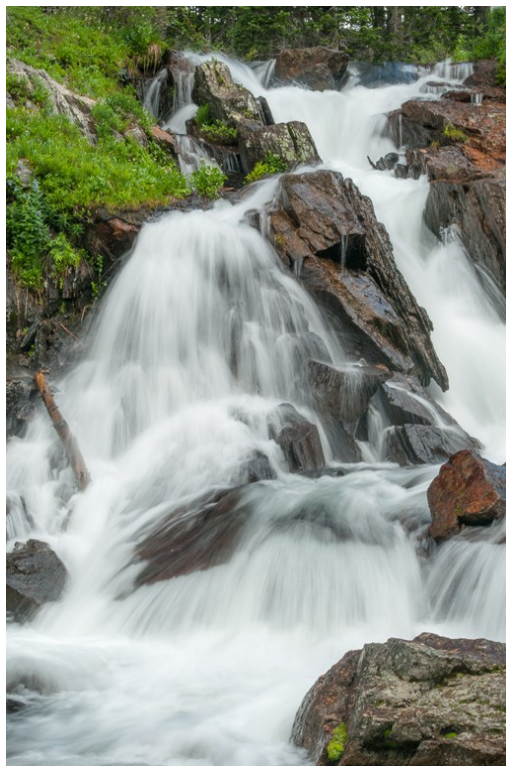


# Favorite Front Range Photography Locations

## Hike the Diamond Lake Trail

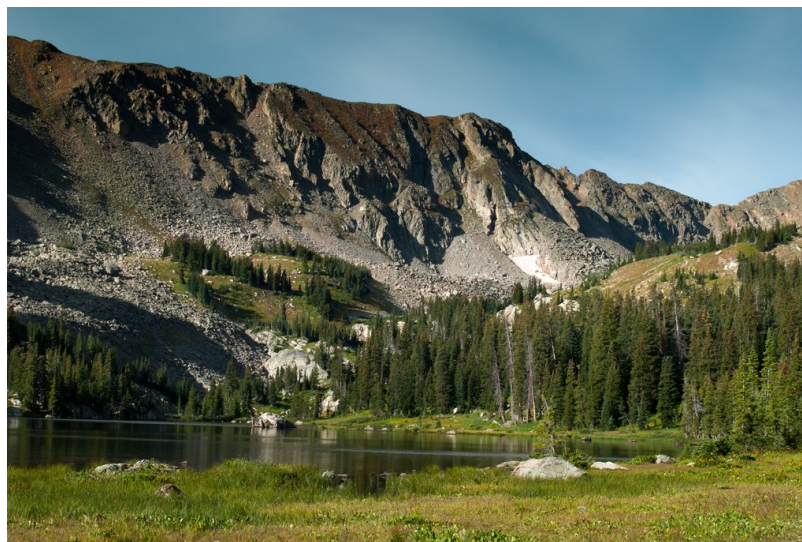
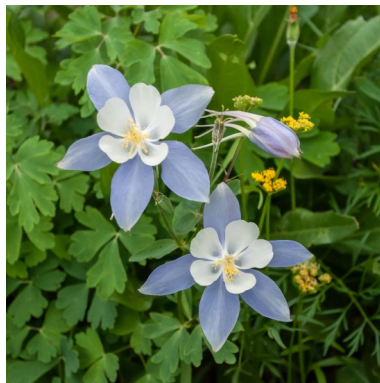
*[From Clark Cummings—includes photos]*

The Diamond Lake Trail located near Nederland is approximately a 5½ mile round trip. This isn't an easy hike but is exceptional and has great photo opportunities all along the trail. The starting elevation is 10,071 feet with 1,240-foot elevation gain. Clark notes that he has hiked it twice, once in late July and once in late August. There were lots of wildflowers even in August. The trail is heavily trafficked and is rocky. It could be wet and muddy in spots, especially earlier in the year when there is still some snowmelt.



Directions from Eldora: Travel west on CR #130 and then northwest on CR #111 to the 4th of July/Buckingham Park Campground. Getting to the trailhead can be difficult. A high-clearance all-seasons vehicle with 4-wheel drive is recommended. It's advisable to arrive early in order to find a parking spot. You'll be rewarded on this beautiful hike with waterfalls, forest, streams, meadows full of wildflowers, views of distant mountain peaks, and a serene mountain lake at the end.

*Clark's photos at Diamond Lake*



## Your Favorite Front Range Photography Location

Where do you love to take your camera in the Colorado Front Range? Share one of your go-to northern Colorado spots with other LPS enthusiasts! Send an article for the newsletter to [Ardeth.Carlson@gmail.com](mailto:Ardeth.Carlson@gmail.com), or just send some basic info to be included in a future issue, and perhaps one or two photos from that location.