

# LPS INFOCUS

LOVELAND PHOTOGRAPHIC SOCIETY  
MONTHLY NEWSLETTER

JUNE 2026

## In this issue:

The Magic of Light .....	2
presented by Ralph Nordstrom	
2026 County Fair Volunteers Needed .....	3
“New Eyes” Editing Project .....	3
Welcome New Members .....	3
LPS Contact Info .....	3
Member Profile: Eden Schmidt .....	4
Tech Tips: Photoshop Dodging & Burning ..	5
Competition Corner .....	6
LPS General Competition Rules .....	7
Judge Qualifications .....	7
Macro & Monochrome Rules .....	7
LPS May Competition Winners .....	8-10
PSA Interclub Information .....	11
PSA Interclub Competition Results .....	11-12
PSA Photo Festival 2026 .....	13
Youth Showcase Best Senior Award .....	13
May Meeting Macro Photos .....	14
General Club Information .....	15
Third Monday Review	
Zoom Meeting Guidelines	
Newsletter Index	
Discussion Forums	
Speaker Recordings	
LPS On Social Media	
Join the Club	



Photo by Ardeth Carlson

## Club Meetings

Monthly club meetings are hybrid in-person plus Zoom; the Third Monday Review session is online only. *No passcode is needed for the online meetings*

### Monday, June 8

#### Monthly Club Meeting

Trinity United Methodist Church  
801 Cleveland Avenue, Loveland  
Social time 6:00 PM  
Meeting 6:30–8:30 PM

<https://us06web.zoom.us/j/93226580276?pwd=eWxtbVYzTGpWbWlYY3lscGNwbWZRdz09>

### Monday, June 15

#### Third Monday Photo Review

6:30–8:30 PM

<https://us06web.zoom.us/j/95087721084?pwd=eXlIMndWenQyaCt6WUUV6RmppenlWdz09>

### Tuesday, July 7

#### LPS Board Meeting

Perkins Restaurant  
2222 W. Eisenhower, Loveland  
6:30 PM  
*Open to All*

*The LPS Board meetings are open to all members. If you are interested in seeing how your leadership team tends to club business, you are welcome to attend, although only Board members can vote.*

Questions about LPS?  
Email [info@lps.cc](mailto:info@lps.cc)

## The Magic of Natural Light

### PRESENTATION BY RALPH NORDSTROM

ARDETH CARLSON, PROGRAMS

Our presenter for the June meeting will be Ralph Nordstrom. As an LPS member, Ralph is able to be with us in person, speaking on The Magic of Natural Light. Ralph describes his photography journey and interest in light this way:

“Being a long-time landscape photographer, I’ve learned a lot over the decades. It’s fun looking back on the photographs I made 30 or more years ago. I started on a self-taught path. I was an insatiable reader of books, ones like *The Daybooks of Edward Weston*; all 17 books in the Life Library of Photography; and the series of books by Ansel Adams, starting with *The Camera* and ending up with *Zone System*. But in those days, all I knew about light was that it was either light or dark—Zone 9 or Zone 2.

“As I grew, there were so many stages I had to go through before I became aware of light and its complexity—optimum exposures, strong compositions, appropriate depth of field. I started attending workshops in 2002. Six years later, I started leading workshops, and that put the pressure on. As a workshop leader, my job was to get the participants at the right place at the right time, and for the latter, that required arriving at a location under the best light. I started looking at light more closely, and that led to studying the different kinds of light. A couple of years ago, I was so enthralled about the many kinds of light that Mother Nature provides us that I decided to create a presentation about it. That’s a great way to get some learning about something you’re not familiar with.

“What I discovered was there were a lot more kinds of light than I imagined. I also learned that some kinds of light create a serious exposure problem. Other kinds can trick you into thinking there wasn’t a dramatic image hidden in it. Many well-known photographers advise not to photograph in midday because the light is so bad, but I take exception to that. We tend to ignore the shadows in our images, but they can make a contribution to the image’s mood. And that’s just a sampling of what we’ll cover in the presentation. In it, we’ll explore 13 kinds of natural light. I’m excited about sharing this with you.”

Ralph leads numerous workshops on the West Coast and western states of the U.S., specializing in nature photography. You can see his photos and full bio and read his blogs on his website, <https://ralphnordstromphotography.com/>.

The meeting will be held at our usual venue in the Trinity United Methodist Church, 801 Cleveland Avenue, Loveland, in the lower level, beginning at 6:00 PM with a social time at 6:00 PM. The official meeting starts at 6:30 with any club business and the competition results slideshow.

*Photos © Ralph Nordstrom*



## 2026 Larimer County Fair Photography Volunteers Needed

As the supervisor for the county fair Open Class Photography Division, Ardeeth Carlson is looking for volunteers to help with check-in of the exhibits and hanging the photos for display.

Check-in will be on Tuesday afternoon, July 28, from 4:00 to 7:00 PM. The volunteers accept the photo prints, mark them with a category and class designation, attach hang tags, and stack the photos in the appropriate category on the print tables. This usually involves 2-3 people doing check-in, 2-3 to attach the hang tags and 2-4 people as runners to move the prints between check-in and tagging tables and to the print stack tables.

Although busy, it's generally a fun time to have a look at the variety of images taken by local area photographers of all ages, from children through senior adults.

Wednesday afternoon, July 29, all of the photos are hung in the display area, where they will be viewed by fairgoers throughout the days of the county fair. By past experience, we have had a little over 200 photos each year, taking about 3-4 hours to finish the display, from around 12:00 or 12:30 to 3:30 or 4:00 PM.

Except for the judges, LPS members are free to submit their own entries; the judges do not see the names of the photographers.

If you are interested in volunteering, email [ardeeth.carlson@gmail.com](mailto:ardeeth.carlson@gmail.com). Details about location and arrival times will be provided closer to the date.

### New Members

We are happy to welcome these new members:  
Teresa Barton  
Rich Dunne (name misspelled in May issue!)

## July "New Eyes" Editing Project

ARDETH CARLSON, PROGRAMS

Unedited photos have now been collected for the July meeting program, and 12 images have been placed in a Google Photos album called "New Eyes For Editing." Images were chosen that have possibilities for many types of edits using a variety of processing styles.

Use the provided link to access the photo album. To download images, left-click on the photo to open it in a new tab, and in Info, you will find the number and title of the photo; click on the three-dot menu icon at the top and select Download to save it on your device. You can download as many of the images that you want to edit, but you can only submit 6 of your edited images to the LPS website. (Please don't share the link with anyone who is not an LPS member.)

There are no editing restrictions. You can just use the usual adjustments such as cropping and exposure sliders, or you can also add filter effects, clone objects in or out, create a composite with your own photos, replace the sky, etc. (Keep in mind that you cannot submit any of the edited photos in any photo competition, since the base photo is not your own.) If you would like, you can select a photo and edit it in multiple ways and submit each of the different processed images.

Title your edited images as *image #\_title\_your name* (such as #2\_Flower Display\_Carlson.jpg). If you have edited the same photo in multiple ways, add a number to each image (for example, ##2\_Flower Display\_Carlson\_01).

The deadline to submit your edited images is June 30. Submit them on the LPS website under **Competitions>Submit Images to a Competition**, in the New Eyes #2 Edited Images category. You do not need to change the image size or resolution.

At the July 13 LPS meeting, the presentation time will include comments about the editing choices and group questions and discussion. As I create the slideshow of edited photos, when I note images processed in a unique way, I can ask that photographer ahead of time to discuss their process at the July meeting, if they are willing. Note that this is not a replacement for the regular LPS July competition, and none of the edited photos will be judged or scored.

Questions about the process? Email [ardeeth.carlson@gmail.com](mailto:ardeeth.carlson@gmail.com). Link to the Google Photos "New Eyes For Editing" album: <https://photos.app.goo.gl/4EGiVFDzUZnn6eh6>

## LPS Board of Directors

### ELECTED OFFICERS

PRESIDENT

— J.R. SCHNELZER

VICE PRESIDENT

— DAVE CLACK

TREASURER/MEMBERSHIP

— TIM KATHKA

SECRETARY

JERRE JOHNSON

### CHAIRPERSONS

PROGRAMS

— ARDETH CARLSON

COMPETITION

— ROB HUFFSMITH

WEBMASTER

MIKE TESKA

PROJECTIONIST

— BRYAN JOHNSON

NEWSLETTER

— ARDETH CARLSON

PUBLICITY

— EDEN SCHMIDT

GREETING HOST

— BILL LUNDQUIST

FIELD TRIPS

— JIM ROODE

THIRD MONDAY MODERATOR

— ARDETH CARLSON

YOUTH SHOWCASE

— RUTH SPRAIN

PSA REPRESENTATIVE

— LISA SCHNELZER

FORUM DIRECTOR

— INGRID JACOBSON

### Mailing Address

Loveland Photographic Society  
P. O. Box 7604  
Loveland, CO 80537

Loveland Photographic  
Society Interest  
Facebook Group

[https://www.facebook.com/  
groups/237033251716/](https://www.facebook.com/groups/237033251716/)

## Member Profile

### Eden Schmidt

Originally from Arizona, I grew up in what was once a small, quiet town called Queen Creek (and no, there were no creeks in the desert). It was a community of farmers and equestrians, so naturally I became one of those horse-crazy girls. I spent my junior high and high school years competing in barrel racing and in other rodeo events.



Before my mom would let me get my first horse, she had me attend a horsemanship summer camp in Warm Beach, Washington. It was a beautiful camp that sat on a hillside with unobstructed views of a green valley below where the horses spent their days grazing on the lush grass. We also made a side trip to a relative's ranch where they raised elk. The ranch was surrounded by forest, with towering snowcapped mountains overlooking it. It looked like a Bob Ross painting! As a desert girl who was used to seeing mostly dust and cactus, I found it all absolutely breathtaking.

My mom lent me her Sony camera that same summer, and you can bet I went click-happy with it! While I did take pictures of people, I was more interested in photographing the horses and nature, especially those big snowcapped mountains. That summer, I not only developed a love for horses but also for the outdoors and a desire to photograph it.

Fast forward to now, and my husband Doug and I have been living in northern Colorado for almost nine years. While Doug was looking forward to escaping the desert heat, I was looking forward to living right next to the Rocky Mountains! Ever since that summer in Warm Beach, I knew that I wanted to live somewhere with trees and mountains, and Colorado fits the bill.

It didn't take long for me to start spending my weekends hiking and learning that it's possible to experience all four seasons in one day.

My in-laws gifted me a Nikon D3400 our first summer in Colorado, and it has been my faithful camera ever since. I have taken it on almost every hike, every summit, and all weather conditions. While I have loved taking pictures of nature since I was little, spending so much time on the alpine with endless mountain views and wildlife encounters has greatly increased my passion for photography.

Growing up, horses were the bridge between everyday life and nature. Now the mountains are that bridge, and I wish to share it with others through my lens.

Photography has helped me come back to the arts. I was one of those kids who spent my days drawing and coloring, but as I got older, life got busy. Now my abundance of mountain and wildlife photos inspire me to draw again. I hope through my art and photography I can inspire others to get outside and appreciate nature. And, even more importantly, I hope to showcase the need to conserve and protect public lands and national parks. Everything about nature was beautifully created, and I believe we are to be good stewards of it while enjoying the beauty and wonder that it brings us.

*Eden has joined the LPS leadership team as the Publicity Chair and is bringing us up-to-date with our Loveland\_Photographic\_Society Instagram account and active Facebook page.*

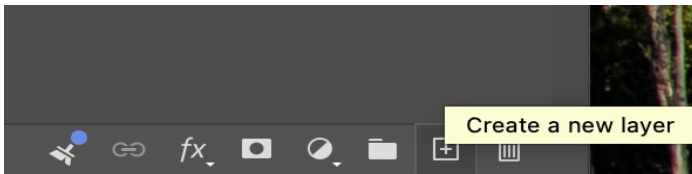


## TECH TIPS with MIKE TESKA

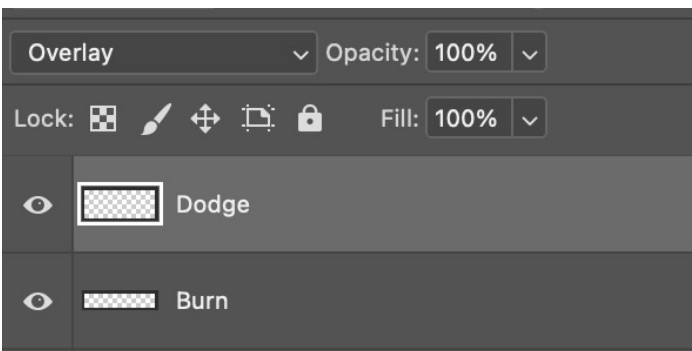
### Non-Destructive and Editable Dodging and Burning in Photoshop

Dodging and burning are some of the most basic and most used photo editing tools. The terms came from the darkroom days. Dodging (lightening an area) was done by blocking some of the light from the enlarger before it hit the photo paper. Burning allowed extra light from the enlarger to hit the photo paper. Today, in Photoshop there are dodge and burn tools to allow you to selectively lighten and darken portions of an image. However, those tools only work on a pixel layer in Photoshop, and they do so by modifying the pixels in that layer. This is what's referred to as "destructive" edits, since the pixels of that layer have been changed.

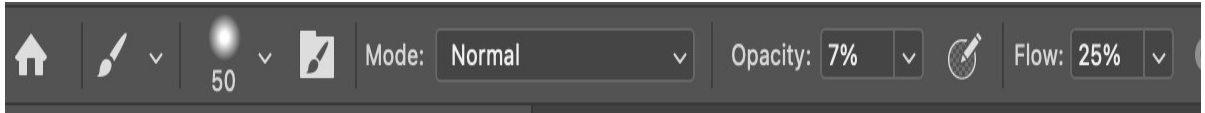
I don't know about you, but I rarely get my dodging and burning right on the first try. So, let's look at a way to dodge and burn in Photoshop in a "non-destructive" and editable way. To do so, add a new blank layer.



I like to use a separate layer for dodge and another for burn. Label this first layer as Dodge. Then add another blank layer and label it Burn. Change the blend mode for each layer to Overlay.



On the Dodge layer, select the brush tool, then set the brush opacity to somewhere between 5% and 10%. Set the flow to about 25%. This will allow a subtle buildup of the dodge and burn effects. If you have trouble seeing the effect, increase the brush opacity. It will look terrible on the image, but you can tame it with the layer opacity setting.



Set the brush color to white for the Dodge layer. Now, draw on the layer where you'd like to dodge (brighten) your image. To burn (darken) portions of your image, click on the Burn layer to select it, then set the brush color to black and brush on the layer where you want your image to be darker.

The nice thing about dodging and burning on separate layers like this is that you can vary the opacity of the dodge and burn layers independently. So, if after looking at the image, it has gotten a bit too bright (too much dodging), you can reduce the opacity of the dodge layer to soften the effect. The same thing can be done with the burn layer. If there are places you'd like to remove the dodge or burn effect, simply grab the eraser tool and go to the dodge or burn layer and erase the brushing you did. Nice! Editable, non-destructive, and variable dodging and burning via these layers.

Let's look at a quick example—dodging and burning some clouds to give them more definition and depth. Here's the image (on the right). Note that it's somewhat "muddy" in the middle especially.



After doing some dodging and burning, here is what we see (photo to the left).

Here are the Dodge and Burn layers on a 50% gray background so you can see where I did the dodging and burning.

If you have a question about Lightroom, Adobe Camera Raw, Photoshop, or the LPS website, others no doubt have the same question. Please email me at [info@lps.cc](mailto:info@lps.cc) and I'll answer them. Happy editing!



# Competition Corner

## Submitting Pictures for Competition or the Photo Review Session

- Log on to the LPS website
- Mouse over the **Competitions** dropdown on the Home Page.
- Select **Submit images to a Competition**
- Select the Competition category or the Third Monday Photo Review
- At the bottom of the screen, click on **Upload images into the Competition.**
- Then click on the button **Select** which will open a window on your computer to select an image.
- Click on **Save Images and Proceed to Edit Page.**
- Type in a title and click on **Save any changes and return to original page.**
- You can replace any photo, up to the submission deadline, if desired.
- A photo may only be submitted once in the current year except for the “Best Of” category in December. If it has won an award, it should not be submitted in competition again in future years.

The monthly competitions allow a single image per category. The photo review session allows up to three images.

*If you have questions about the monthly topic or the competition, contact the Competition Chair Robert Huffsmith at [rhuffsmith2@gmail.com](mailto:rhuffsmith2@gmail.com).*

## Monthly Competitions

### June Competition Categories

Open Projected (included every month)  
Monochrome (rotating PSA category)  
Monthly Topic: Macro

Submission Deadline  
Before Midnight Monday, June 1

### Please keep the judging criteria in mind:

**Impact**—Impact is the nebulous quality of an emotional response to an image. This subjective aspect of judging should not preempt the composition or technical quality aspects.

**Composition**—Good composition is a pleasing arrangement of the elements in an image. There are many guidelines for good composition that judges may consider.

**Technical Quality**—This includes sharpness, focus, color, tonal scale, contrast, appropriate depth of field and other qualities. Consideration is also given for the effect the photographer was trying to achieve such as high key, multiple exposure, or selective focus.

**Monthly Topics**—The subject matter should be related in some manner to the topic. While there are no formal deductions or penalties, judges may reduce their overall score if they feel the image does not align with the monthly topic. With that said, creative interpretation is encouraged, except in categories with specific rules such as monochrome.

**Open Projected**—The image must begin as a photograph. From there, it is up to you. Any photograph may be entered in the Open Projected category.

## June Competition Groups

Participation in a group is determined by the average of the member's 9 previous LPS competition image scores. Here are the groups for the May competition:

Group 5—Gerald Baumann, Dave Clack, Max Coopwood, Russell Crawford, Chris Douglas, Bob McDonnell, J.R. Schnelzer, Lisa Schnelzer, Jeff Stephenson, Mike Teska

Group 4—Jenny Anderson, James Camp, Ardeth Carlson, Kurt Flock, Robert Huffsmith, Dan O'Donnell, Ruth Sprain

Group 3—Kevin Clarke, Tim Hitchcock, Bryan Johnson, Jerre Johnson, Tim Kathka, Laurie Paulik, Renee Perran, Marc Rochkind, Alan Schuppan, Wayne Snodderly

Group 2—Dan Kozlowski, Jim Roode

All other members will compete in Group 1 until the member has 9 submitted images *within a 12-month period* that reach an averaged score for a different group. An individual member's competition group might vary from month to month.

Best of Show and Award of Merit will be given in Groups 2-5, and those photos will be published in the LPS InFocus newsletter.

### Group Range of 9-Score Averages

Group 5 > 22.3  
Group 4 <= 22.3  
Group 3 <= 21.3  
Group 2 <= 20.0

## Monthly Topics

These remaining monthly topics are listed alphabetically rather than chronologically; this is not the order in which they will be scheduled:

Abandoned Places  
Fall Fantasies  
Floral Fantasies  
Minimalism  
Trees and More Trees

## LPS General Competition Rules

All images used in competition must be the property of the member and must be photographs or combinations of photographs that were taken by the member. Other photographic material from other sources is not permitted to be used unless specified in a monthly or other special topic.

1. The photographic image may not be a reproduction of another artist's work. The image entered must be the photographer's original work. If another work of art is visible in the photograph, it cannot be the central theme or message of the photograph. If the judges determine the artwork is the central theme, the image will be scored accordingly.
2. All images must begin with a photograph. They may not be totally computer generated.
3. Members may only enter in one level.
4. Images may only be entered once in a given year (except for the year-end competition where they must be entered in the same level and category as originally entered). Images that don't earn an award may be entered again the following year. Images that win any award may not be entered again.
5. Promotions to higher levels are based on a member's average score for their last 9 images during the past 12 months. If a member has less than 9 entries in the past year, their average score calculation will be padded with zeros. A member cannot win an award unless they have at least 9 entries in the past year. Competition level limits will be adjusted each year to avoid having everyone grouped into the same one or two levels.
6. There are five competition levels with 1 being the starting group and 5 being the highest score averages group.
7. All members will start out at Level 1, and they can only move up to another level once they have submitted a minimum of 9 images to competitions in the past 12 months.
8. Student members may only enter at Level 1.

9. By entering images in a Loveland Photographic Society competition the photographer gives Loveland Photographic Society non-exclusive right to use the image for purposes related to promotion of the Loveland Photographic Society and for benefit of the members. For example: these images may be used in slide shows or other presentations to the members and to outside parties for the purpose of promoting the Loveland Photographic Society.

*The LPS General Competition Rules are posted on the LPS website under **Competitions>Image Competition Overview**.*

## LPS Judge Qualifications

LPS competitions are judged by a panel of three people who meet the qualifications to critique photos in a knowledgeable manner. This means that judges should have significant experience as a photographer and some familiarity with a variety of photographic genres and/or experience as a photography judge.

It is important for judges to have a good understanding of the elements that comprise a well composed photograph, the ability to recognize aspects of an image that could be improved, and the ability to explain their critiques.

While the judges are most often members of LPS, it is also acceptable to use the services of non-member judges. LPS judges generally critique and score between 50 to 75 photos between Tuesday morning and Thursday at midnight the week before the meeting and need to be available to help break any ties for BOS.

If you are interested in being an LPS judge, contact Rob Huffsmith, the Competition Chair, at [rhuffsmith2@gmail.com](mailto:rhuffsmith2@gmail.com).

Final determination whether prospective judges meet the required skill set is within the authority of the Competition Chair. Judges who meet the qualifications must go through training that is specific to our club competitions.

*The Judge Training PowerPoint is on the website at **Competitions>Detailed Rules>Judge Training***

## June Competition Macro and Monochrome Rules

Following our macro photo shoot at the May meeting, the monthly topic for June is Macro. This competition does not require an image to be what is considered macro in a technical sense but should be a closeup in which the subject fills most or all of the frame. Such techniques as oil & water images fit this category; cross-polarization can also be included when it involves close focusing on a subject, even though the object being photographed might not be recognizable, such as a picnic plate or a CD disc. Of course, you are not required to submit an image taken at the May meeting.

The rotating category for our June competition is Monochrome. A monochrome image contains only shades of gray which can include pure black and pure white, or an image with a single tone overall, such as sepia.



This image has a single tone across the entire image; the filter could also be another single tone such as blue or green.



This image of a bull, although mostly browns, is split-toned and would not be acceptable in our monochrome competition category.

This is not a realism category, so creativity is allowed. Avoid using spot color, and be careful that when converting a color photograph to B&W you do not allow any color tones to remain.

Contact the Competition Chair Rob Huffsmith at [rhuffsmith2@gmail.com](mailto:rhuffsmith2@gmail.com) if you have further questions about the June competition.

### LPS May Competition Winners

All photos can be viewed on the LPS website under Competition Results. Select a competition and check the box "Display All." Click on an individual photo for an enlarged image and to see critiques, if any. Thank you to the May judges Ardeth Carlson, Dave Clack, and Mike Teska.



BOS Open, Group 4  
Bryan Johnson



BOS Open, Group 5  
Chris Douglas



BOS Open, Group 3  
Laurie Paulik



AOM Open, Group 4  
Jerry Baumann



AOM Open, Group 5  
Dave Clack



BOS Nature, Group 5  
Jeff Stephenson



BOS Nature, Group 4  
Ardeth Carlson



BOS Nature, Group 3  
Laurie Paulik



AOM Nature, Group 5  
J.R. Schnelzer



BOS Nature, Group 2  
Dan Kozlowski



AOM Nature, Group 4  
Jerry Baumann

TOPIC: PANORAMIC IMAGES



BOS Topic, Group 5  
Dave Clack



BOS Topic, Group 4  
Kurt Flock



BOS Topic, Group 3  
Laurie Paulik



AOM Topic, Group 5  
J.R. Schnelzer



AOM Topic, Group 4  
Rob Huffsmith

## PSA Interclub Competitions

LPS reps for the PSA interclub competitions are now collecting photos for the 2026-2027 year. The deadline for submissions are November 15, February 15, and April 15. Contact the reps listed below if you have photos you would like to have them consider as entries.

The definitions for Nature, Photojournalism, and Travel, which are realism categories, can be found at <https://psaphotoworldwide.org/page/division-definitions#nd>.

### NATURE DIVISION:

**Dan O'Donnell, LPS Rep**  
[djod@me.com](mailto:djod@me.com)

Dan is looking for images that illustrate an interesting behavior or a unique point of view. Storytelling is an important part of the image.

### PHOTOJOURNALISM DIVISION:

**Ardeth Carlson, LPS Rep**  
[ardeth.carlson@gmail.com](mailto:ardeth.carlson@gmail.com)

Ardeth is looking for photos that contain a strong visual story and emotional impact, reflecting the human presence in our world.

### PICTORIAL PRINT DIVISION:

**Lisa Schnelzer, LPS Rep**  
[western-exposure@hotmail.com](mailto:western-exposure@hotmail.com)

The five image categories in the Pictorial Print Division (PPD) are: Small Color, Large Color, Small Monochrome, Large Monochrome, and Creative Altered Reality. For further information regarding submissions, contact Lisa.

### TRAVEL DIVISION:

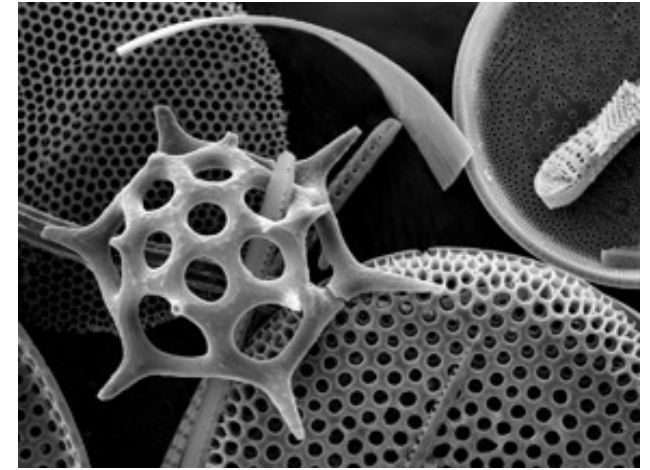
**Ardeth Carlson, LPS Rep**  
[ardeth.carlson@gmail.com](mailto:ardeth.carlson@gmail.com)

Ardeth would like images that show characteristic features of a place or a people.  
*Serving as temporary rep, looking for a member to take this over! Let's talk!*

## PSA Interclub Competition Results

The LPS reps for the interclub competitions in which we compete have received results of Round 3 for the 2025-2026 season. LPS excelled in the print competitions, with several members receiving Honorable Mention (HM) for their images and special congratulations to Tom Balla for 1st place in Large Monochrome and Mike Bamber for 3rd place in Small Color. These winning prints will move forward to the year-end judging in June 2026. Furthermore, those selected as award winners in June will have the honor of being featured in the Print Gallery at this year's PSA Photo Festival, which will take place in Las Vegas this September. At the end of the 2025-2026 season, as a club, LPS placed 3rd in the Creative Altered Reality Category, 1st in the Large Color Category, and 1st in the Large Monochrome Category.

Thank you to the members who participated in the PSA Interclub Competitions and to the LPS reps for the work in finding images to submit on behalf of our club.



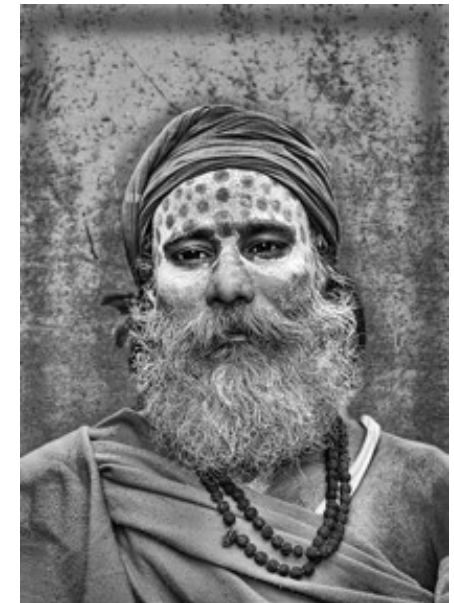
'Skeletal Plankton'—Tom Balla  
1st Place, Large Monochrome

PPD Large Monochrome Standings 2025-2026  
Top Clubs  
Loveland Photographic Society

Nancy Speaker, FPSA, PPSA  
PSA Interclub Director

Larry Dunn, APSA, SPSA  
Pictorial Print Director

**First Place**



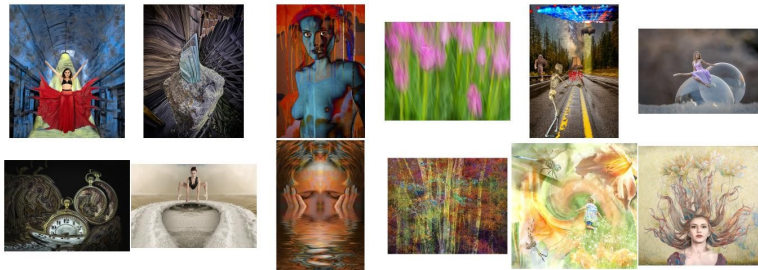
'Sad Holy Man'  
J.R. Schnelzer  
HM, Large Monochrome



PPD Creative Altered Reality Standings 2025-2026

Top Clubs

Loveland Photographic Society



Nancy Speaker, FPSA, PPSA  
PSA Interclub Director

Larry Dunn, APSA, SPSA  
Pictorial Print Director

**Third Place**



'I See You'—Mike Bamber  
3rd Place, Small Color



'Ice Pose'—Lisa Schnelzer  
HM, Creative Altered Reality



'Time Ebb & Flow'—Rob Huffsmith  
HM, Creative Altered Reality



'Lucy in Black Dress'—J.R. Schnelzer  
HM, Small Color

## PSA Photo Festival 2026

The PSA Photo Festival is being held in Las Vegas this year from September 13 through 19 at the Rio Hotel.

The early-bird registration fee is \$225 from April 1 to April 30. After that the cost is \$250 until August 15. On-site registration will be \$280. There is also a special price of \$60 for a member's non-photographer spouse.

Full registration includes exceptional speakers, receptions, and a special "Explore, Learn, Shoot" workshop. There are also one-day passes for \$99, and then you can also sign up for one of that day's tours (with the tour fee in addition).

These speakers will be presenting several times and days during the week:

- Cole Thompson "The Lessons My Images Have Taught Me"
- Vince Cater "The Importance of Print"
- Essdras M. Suarez "Panama's Birds: Diversity, Behavior, and the Art of Seeing"
- Hanson Fong "A moment captured is more treasured than a moment lost. Time to look good"
- Scott Kelby "The Stuff They Don't Tell You"
- Erin Babnik "Getting Things Wrong in All the Right Ways"
- John Kaplan "Travel Photography Across the World"

The Festival Print Gallery will open at 7 PM on Tuesday, September 14. In the past, award-winning photos by LPS members and from our LPS Youth Showcase have been displayed in the gallery along with photographs from photographers all over the world.

Special photo tours have been arranged for registrants, at an additional cost, which varies by tour, with bus transportation provided. The tours are also available at different days and times to accommodate as many people as possible.

Here are the scheduled tours:

- Valley of Fire State Park
- Nelson Ghost Town
- Red Rock Canyon National Park
- Shelby America
- Neon Museum
- Photo Walk at Symphony Park & Smith Center
- Springs Preserve & Model Shoot.

There are also two special workshops, which have a limit on the number of participants.

For complete current Festival information:

<https://psaphotofestival.org/>

## LPS Youth Showcase Best Senior Award

At the May LPS meeting, Margo Feaster was recognized as the winner of the Best Senior Award for the 2026 LPS Youth Showcase. Youth Showcase Chair Ruth Sprain presented Margo with her award and the prize check for \$250 from LPS. Margo is a student at Mead High School.



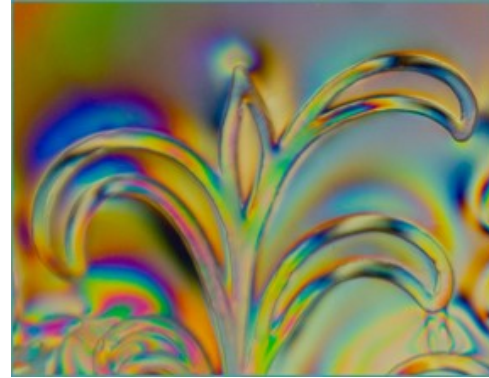
Photo by Kurt Flock

Photos by Margo Feaster



## May Meeting Macro Photos

Our May meeting on macro photography included a demonstration by LPS member George Kindt of his macro photography rail. Here is George's setup, with a dark background behind the subject.



Cross-polarization  
Ruth Sprain



George sent these images taken using the rail. This is one of the processed subjects. This is 52 images (he actually took 350+) stacked via Zerene Stacker for a depth of field equivalent of about 6 cm (2-1/4 inches), f/4.5 at 0.4X reproduction ratio.

For comparison, here is a single image from about the middle of the stack, depth of field calculated at 2.4 mm at f/4.5.



Cross-polarization  
Dan Kozlowski



Oil & Water  
Jeff Stephenson

## Third Monday Photo Review

An excellent way to get feedback on your photos and for experienced photographers to share their knowledge is to participate in the Monday photo review sessions on the third Monday of each month. Participants are allowed to submit three photos no later than noon of the session day, via the Submit Images on the LPS website.

This monthly session is hosted on Zoom, and submitted photos receive comments and suggestions by all participants. Many members have reported that they have received a greater knowledge of photo techniques and also found it helpful to see their photos in the eyes of other photographers. Because judges of the monthly competition often do not have time to offer critiques on all of the competition photos, the Third Monday Photo Review provides that helpful aspect of improving our craft.

You are also welcome to join the meeting and participate in the discussions if you haven't submitted any of your own photos. Click on the link on page 1 of the newsletter to join the Zoom meeting.

## Zoom Meeting Attendance Guidelines

LPS is happy to provide an opportunity for members to attend meetings online through Zoom streaming. However, sometimes online attendees forget to turn off the microphone and camera on their own devices; that means everyone watching the presentation can watch you eating, see the hijinks of your cat/dog, or hear you talking to someone else! When you log into the meeting, please automatically click on the microphone icon and the camera icon so that a red line appears over those indicating they are off. Now you can watch the presentation without everyone also watching you. Of course, feel free to turn your audio back on when you want to ask a question or give input during discussions. You can also use the Chat button to send questions or comments.

## Submitting Third Monday Review Photos Into Competition

Several members have noted that they are having difficulty with entering a photo in a monthly competition that has previously been submitted to the Third Monday Review. To do that, the competition image must be selected from your Image Library on the LPS website, not uploaded again from your computer. If you have made changes to your Third Monday photo and want to enter that in the competition, which is allowable, you need to delete the first image from your Image Library before submitting the updated photo in the competition.

## Newsletter Index

To find articles in previous issues of the LPS InFocus newsletter, go to the Newsletter Index on the website. The listings include a clickable link that will take you to the newsletter issue. Newsletters can be viewed from January 2014, although the index list only goes back to 2016.

## LPS Website Discussion Forums and Meet & Shoot

Log in to [www.lps.cc](http://www.lps.cc) as a member.

- 🔗 Click on *Discussion Forums*
- 🔗 You can select any of the headings, such as *Upcoming Photo Opportunities & Events* or *Meet & Shoot*
- 🔗 Click on *View Topics* to see the posts.

You can also create a new topic of your own under one of the headings, to which members can respond and interact.

If you would like to receive email notifications with the latest posts for that topic, click on the Subscribe button.

The board decided to auto subscribe all members to the Field Trips heading, but if you do not want to receive notifications of those

## LPS InFocus The e-Newsletter for the Loveland Photographic Society

EDITOR

**Ardeth Carlson**

[ardeth.carlson@gmail.com](mailto:ardeth.carlson@gmail.com)

Newsletter issues available at  
<https://www.lps.cc>

## LPS Speaker Recordings

Most meeting presentations have been recorded for viewing by members only. You can find links to the videos on the LPS website; go to **Membership>Presentation Videos**. Please *do not share* these links with non-members unless they are marked as shareable in the list.

## LPS On Social Media

LPS is now on both Facebook as **Loveland Photographic Society Interest Group** (<https://www.facebook.com/groups/237033251716/>) and Instagram, **Loveland Photographic Society**. Our public group on Facebook provides information on club meetings and events and is a place to share your photos and initiate conversation about photography



## JOIN THE CLUB

If you are reading this newsletter as a non-member and would like to join the Loveland Photographic Society, go to the main page on the [www.lps.cc](http://www.lps.cc) website and click on **Membership > Join or Renew**. Annual dues are \$45 or \$60 per couple. Membership dues may be paid by credit card online, mailed to the P.O. box address on page 3, or by cash or a check made out to Loveland Photographic Society and given to the LPS treasurer.