

Club Meetings

The May club meeting will be hybrid in-person plus Zoom; the Photo Review Session will be online at the link.

Tuesday, May 3

LPS Board Meeting

Perkins Restaurant

2222 W. Eisenhower, Loveland

Meal 5:30 PM; meeting at 6:30

Open to All

Monday, May 9

Monthly Club Meeting

Best Western

5542-US Hwy 34

6:30–8:30 PM

<https://zoom.us/j/93226580276>

Saturday, May 14

Photo Bull Session

Loveland Panera Bread

1550 Fall River Drive, Loveland

8:30–10:30 AM

Monday, May 16

Photo Review Session

6:30–8:30 PM

<https://zoom.us/j/95087721084>

Please mute your microphone during online meetings except when you are speaking, to avoid extraneous noises.

May Meeting Agenda

PAIRINGS

Presented by Greg Holden

Greg Holden is a photographer from Longmont, Colorado, who uses his photography to share with others how he sees the world. He enjoys creative photos of little scenes often overlooked by others rather than postcard landscapes. Although he won't pass by a chance to photograph a beautiful landscape or a tranquil sunset, he'd rather be exploring abandoned places and capturing the details of the layers of paint and rust on a discarded automobile. He finds inspiration from master photographers and a wide range of subjects, such as the close-up beach studies by Minor White, the early portraiture of Steichen and Stieglitz, and street scenes by Andre Kertesz. He enjoys teaching others and sharing his passion for photography and continues to speak and judge virtually at clubs throughout the Colorado, Maryland, and Virginia areas.



In his presentation, Greg will show pairings of his photos of completely different subjects but with similarities in style, composition, and color choices with respect to how he composed and processed his images. The collection contains some of his favorite images and represents his diverse photographic interests. While compiling this collection for a book, some of these pairings quickly presented themselves, while others were more subtle, allowing Greg the enjoyment of searching his archives to find matches. Sometimes multiple matching photos were discovered, allowing him to select the best or most interesting match.

Greg hopes this presentation inspires you to investigate your own portfolio to discover common threads in your style and find a unique way to share a collection of your photos.

LPS Board of Directors

PRESIDENT

— DAN KOZLOWSKI

VICE PRESIDENT

— RICH KREBS

TREASURER

— SANDY LOUCKS

SECRETARY

— JERRE JOHNSON

PROGRAMS

— TIM KATHKA

— RICH KREBS

— RUTH SPRAIN

MEMBERSHIP

— SANDY LOUCKS

COMPETITION

— JEFF STEPHENSON

Chairpersons

FIELD TRIPS

— LYNNE LEWIS

FORUM DIRECTOR

— INGRID JACOBSON

GREETING HOST

— OPEN

MENTOR/

— MIKE TESKA

PUBLICITY

— OPEN

SCHOLARSHIPS

— RUTH SPRAIN

NEWSLETTER

— ARDETH CARLSON

WEBMASTER

— BILL SHANAHAN

PSA REPRESENTATIVE

— LISA SCHNELZER

InFocus

The e-Newsletter for the
Loveland Photographic Society

Mailing Address

P. O. Box 7604 • Loveland, CO 80537

Public Facebook Page

[https://www.facebook.com/
LovelandPhotographicSociety/](https://www.facebook.com/LovelandPhotographicSociety/)

Members Only Facebook Group

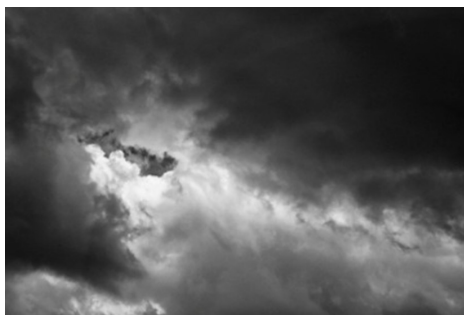
[https://www.facebook.com/
groups/237033251716/](https://www.facebook.com/groups/237033251716/)

Submitting Pictures for the Monthly Competition or Photo Review Session

- Log on to the LPS website
- Mouse over the **Competitions** dropdown on the Home Page.
- Select menu item:
Submit images to a Competition
- Select the Competition category or the Third Monday Photo Review
- At the bottom of the screen, click on **Upload images into the Competition.**
- Then click on the button **Select** which will open a window on your computer to select an image.
- Click on **Save Images and Proceed to Edit Page.**
- Type in a title and click on **Save any changes and return to original page.**
- You can replace any photo, up to the submission deadline, if desired.

The monthly competitions allow a single image per category. The photo review session allows up to three images. Include your last name in the title; this will allow us to limit the number of images if it is necessary.

Photos © Greg Holden



© Greg Holden

LPS Goes Hybrid

After investigating numerous possible venues for resuming in-person club meetings, the LPS board of directors has approved a one-month contract with the Best Western hotel, at the southwest corner of the intersection of Highway 34 and I-25, on a trial basis. The parking lot is accessed via the side road next to the Conoco station on East Eisenhower.

The May 9 meeting will also be presented via the current Zoom link, listed on page 1 of the newsletter, for members who live out of the area or are not comfortable with meeting in person. This first meeting will help the board evaluate how to proceed with future monthly meetings of LPS.

LPS Youth Showcase Results

Over 200 photos were entered in the 2022 LPS Youth Showcase from eight northern Front Range high schools: CETC (Career Elevation & Technology Center), Mountain View, Poudre, Mead, Frederick, Boulder, Windsor, and Monarch. Images were judged by Ardeth Carlson, J.R. Schnelzer, and Lisa Schnelzer.

Ribbons are given to 1st through 4th place winners, and these photos are entered in the PSA Youth Showcase. Each 1st-place winner receives a \$25 Jax gift card. The Best Senior Award winner of a \$250 prize from LPS is Emmanuel Quintana from CETC in Longmont. The LPS Youth Showcase winners will be recognized at our LPS meeting on May 9. The winning images are pictured on pages 8 and 9. (In some categories not all four awards were placed.)

Many thanks to committee members Dan Kozlowski, Rich Krebs, Lynne Lewis, Lorie Smith, and Ruth Sprain.

Keep LPS Alive!

Volunteers are still needed to assume the duties of webmaster and treasurer/ membership chairperson,

It cannot be stressed enough how vital these positions are to the continued operation of our club. Certainly we must have a treasurer to handle our finances and someone responsible for keeping track of new member activation and membership updates.

Take a look at the list of webmaster duties and you can see what will happen without a website administrator, including no website which means no competition submissions or judging, no posting of competition photos, and no newsletter.

Duties of the Treasurer/ Membership Chair

BY SANDY LOUCKS

Because there is so much overlap, the positions of treasurer and membership chair go together and should be assumed by one person. The treasurer has to deal with all money matters, income and expenses, which are all directly related to membership (new members and renewals). The total time invested per week averages 2-4 hours (or 8-16 hours per month). It's a lot of small details, but all are simple to do.

Treasurer

Duties include managing both bank accounts (checking and savings), balancing said accounts, paying bills for the club via debit card and checks, maintaining/storing all financial documents for seven years (it all fits into just one bin), transferring money from PayPal to our bank accounts each month,

creating/maintaining a spreadsheet and generating bi-monthly (every two months) financial reports for board meetings, and going to the post office at least once per month (more often is better) to sort the mail, collect checks for member renewals, and pick up some bills.

Part of the treasurer's duties are to oversee all banking changes. When we get a new president, secretary, or treasurer, the treasurer must generate specific documents in a specific format to inform the bank of the changes being made.

Another duty is to keep up with our affiliates and maintain any documentation/records they require to keep our affiliation status.

Membership

Duties include activating new member accounts and sending them a greeting and notification of membership activation. New members are not activated until money is received. The same holds true for renewing members, i.e. updates are made only after money is received. This requires some simple record keeping.

Also, when we meet in person, I will make a name tag for each new member. Name tags also can be made of veteran members who have lost theirs.

Occasionally the membership list needs updating by deleting people who are no longer members. If their account has been expired and inactive for 18 months or longer, I delete the account for financial reasons.

Sandy will be available to help the new treasurer/membership chair learn the ropes.

Webmaster Duties

BY BILL SHANAHAN

The web administrator position takes 1-2 hours per month on average. I've maintained a notebook in PDF form that serves as a cheat sheet, with instructions on how to find your way around the website and how to handle routine items. Visual Pursuits, the authors of the LPS Website, also has built-in help covering their administrator tools.

These are the main webmaster duties:

- Upload newsletter and newsletter page
- Update competition results once a month
- Update web pages as needed, usually once per year
- Update email forwarding list, usually once per year
- Work with treasurer to pay annual fees
- Update roles for new board members

Along with the cheat sheet, I will pass along the following items:

- Excel spreadsheet outlining the roles assigned to board members.
- Excel spreadsheet covering the newsletter index
- Perl scripts that convert the competition results and newsletter index to HTML code; this can be done in the Visual Pursuits editor, but the old hacker in me wants to edit in HTML.

Familiarity with HTML and Perl scripts would be helpful but not necessary.

Bill will be available to help the new administrator.

Competition Corner

May Competition

Open Projected
Nature

Monthly Topic: Reflections

Submission Deadline

Before Midnight, Monday, May 2

Please keep the judging criteria in mind:

Impact and Viewer Interest—"Wow" factor is the nebulous quality where an image "pops." This subjective aspect of judging should not preempt the technical or composition aspects of an image.

Composition—Good composition is a pleasing arrangement of the elements in an image. There are many guidelines for good composition that judges may consider.

Technical Quality—This includes sharpness, focus, color, tonal scale, contrast, appropriate depth of field and other qualities. Consideration is also given for the effect the photographer was trying to achieve such as high key, multiple exposure, or selective focus.

Monthly Topics—The subject matter should be related in some manner to the topic. While there are no formal deductions or penalties, judges may reduce their overall score if they feel the image does not align with the monthly topic. With that said, creative interpretation is encouraged.

Open Projected—The image must begin as a photograph. From there, it is up to you. Any photograph may be entered in the Open Projected category.

Nature Category

Please be aware of these rules, to avoid having your photo disqualified from competition.

Allowed digital adjustments:

Adjust exposure
Adjust contrast, highlight and shadow detail
Correct white balance/color
Convert to black & white (grayscale only)
Adjust saturation
Remove dust spots, noise, flares
Crop, straighten
Sharpen (including focus stacking)

All adjustments must appear natural.

Not allowed:

Cloning anything in or out
Post-process blurring or darkening the background
Vignetting

In addition, watch out for evidence of humans, such as roads, bridges, telephone poles/lines, fences, or buildings, which disqualify an image for a nature competition. Feral animals, like wild horses, and domestic animals such as cattle, goats, and llamas, and cultivated plants are not allowed.

If you want to add a border to differentiate the photo from the screen background, it should be no wider than 5 pixels. No watermarks, copyright, or text should be included on your photo.

For an in-depth guide to nature competition photos, download this pdf:

<https://cdn.ymaws.com/psa-photo.site-ym.com/resource/resmgr/pdf/divisions/nd/nd-judges-guide.pdf>

May Competition Groups

Participation in a group is determined by the average of the 9 previous LPS competition scores. The groups for the May competition:

Group 5—Ardeh Carlson, Keith Clements, Max Coopwood, Dan O'Donnell, J.R. Schnelzer, Lisa Schnelzer, Jeff Stephenson

Group 4—Robert Huffsmith, Ed Ogle, Laurie Paulik, Josemaria Quera

Group 3—Sterling Brody, Kurt Flock, Jerre Johnson, Timothy Kathka, Dan Kozlowski, Bob McDonnell, Michael Rothschild, Ruth Sprain, Michael Teska, Dave Van Riper

Group 2—Kevin Clarke, Marvin Froistad, Rich Krebs, Warren Larson, Octavio Noda, Renie Poole, Paul Weis, Michael Wilcox

All other members will compete in Group 1 until the member has 9 submitted images that reach an averaged score for a different group. An individual member's competition group might vary from month to month.

New Members

A warm welcome to new member
Richard Spellman.

Upcoming 2022 Monthly Topics

June: Very Colorado
July: In Motion
August: Weather
September: Road Trip
October: Seasonal
November: Critters

PSA Interclub Competitions

LPS is a member club of the Photographic Society of America and participates in three divisions of interclub competition: nature, print, and travel. There are three rounds of competition per season, with deadlines on November 15, February 15, and April 15.

For the **nature and travel divisions**, each club can submit up to six images by six different members in each round. Photos should be in JPG format with dimensions of horizontal no greater than 1400 pixels and vertical no greater than 1050 pixels.

In the **pictorial print division**, there are five image categories: large color, small color, large mono, small mono, and creative altered reality. Participating clubs can submit up to four prints by four different members in each category at each round.

NATURE DIVISION:

Ardeth Carlson, LPS Rep
ardeth.carlson@gmail.com

Nature Division (ND) image guidelines can be found at <https://psa-photo.org/index.php?nature-division>. Ardeth is looking for images that illustrate an interesting behavior or a unique point of view, not just a landscape or wildlife that is in good focus! Storytelling is an important part of the image.

PICTORIAL PRINT:

Lisa Schnelzer, LPS Rep
lisaschnelzer@gmail.com

Description of the five image categories in the Pictorial Print Division (PPD) can be found on the PSA website: <https://psa-photo.org/index.php?divisions-pictorial-print-interclub-competition-entering-rules>. For further information regarding the size of prints, etc., contact Lisa.

TRAVEL DIVISION:

Rich Krebs, LPS Rep
rkrebs318@gmail.com

A definition of a travel photo and a PDF of the Travel Division (PTD) guidelines can be found at <https://psa-photo.org/index.php?divisions-photo-travel>. Rich wants images that show characteristic features of a place or a people.

LPS members who are interested in having their photos considered for our club's submissions to a PSA interclub competition can contact the LPS rep for more details. Photos are now being collected by the reps for the 2022-2023 season.



Reasons to Join PSA

An individual membership in the Photographic Society of America is an excellent bargain for photographers seeking to improve their photography skills. For the membership fee of \$45, PSA offers free online photography courses, study groups, mentorships, and the opportunity to compete individually in the PSA divisions of Nature, Travel, Pictorial Print, Projected Image, Photojournalism, and 3D. In addition, the monthly PSA Journal is available online for download. Educational webinars on a variety of subjects can be viewed at any time.

With this year's photo festival being held in Colorado Springs, this might be a good time to join PSA for the year to see if these resources are of benefit to you.

PSA Photo Festival 2022

Make plans now to attend this year's PSA Photo Festival, being held in Colorado Springs from September 21 through September 24.

Online registration begins on May 1, with early-bird registration available until May 31. If you are not currently a member and join before May 31, you will receive an \$80 discount on the festival registration fee. One-day passes are also available for \$99, if you want to drive down to the Springs for one specific day only.

The festival hotel will be the Doubletree Hotel on 1775 E. Cheyenne Blvd.; use the link on the PSA website for a discounted room rate.

Listed daytime speakers are Harold Davis, John Gerlach, Mike Pach, Aaron Priest, Deborah Sandidge, Siggie Williams, and Wendy Shattil, featuring workshops on a variety of topics, and the scheduled evening speakers are Scott Wilson, Lisa Langell, and John Paul Caponigro. Photo tours in the Colorado Springs area will be offered from Monday, September 19, through Thursday, September 22.

To keep updated as the festival plans progress, check out <https://psa-programs.org/photo-festival-2022/registration.html>. If you are a member of PSA, volunteers are needed to help out with the festival in such roles as doing check-in for meals or photo tours or monitoring the print gallery. You can volunteer for as little as one or two hours. If you are interested, email Twila Bourlon at hq@psa-photo.org.

LPS April Awards

All of the competition photos, along with the scores, can be viewed in a larger size on the LPS website under "Competition Results."



BOS Open, Group 2
Paul Weis



BOS Travel, Group 5
Michael Wilcox



BOS Travel, Group 3
Dave Van Riper



BOS Travel, Group 4
Dan O'Donnell



BOS Travel, Group 2
Octavio Noda



BOS Topic, Group 5
J.R. Schnelzer



BOS Open, Group 5
Lisa Schnelzer



BOS Open, Group 4
Dan O'Donnell



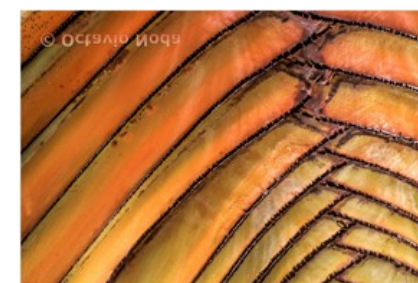
BOS Open, Group 3
Laurie Paulik



BOS Topic, Group 4
Dan O'Donnell



BOS Topic, Group 3
Ed Ogle

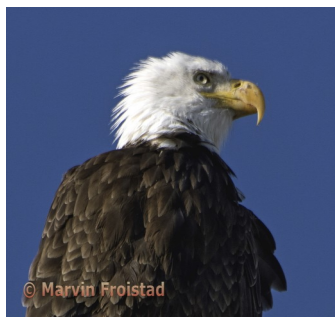


BOS Topic, Group 2
Octavio Noda

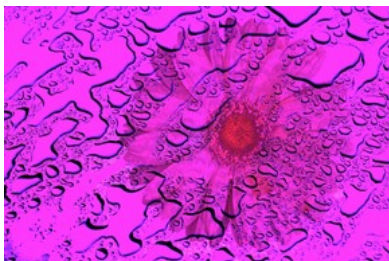
April Awards—Continued



AOM Open, Group 3
Mike Teska



AOM Open, Group 2
Marvin Froistad



AOM Topic, Group 5
Mike Wilcox



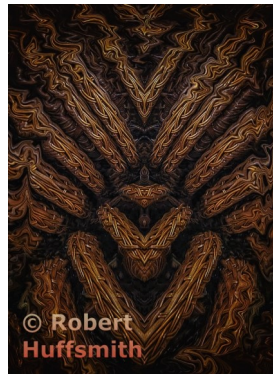
AOM Open, Group 5
Ardeth Carlson



AOM Travel, Group 5
Lisa Schnelzer



AOM Topic, Group 4
Josemaria Quera



AOM Topic, Group 3
Robert Huffsmith



AOM Open, Group 4
Jerre Johnson



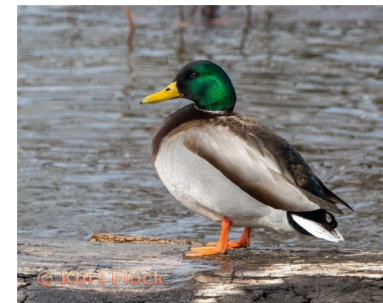
AOM Travel, Group 4
Josemaria Quera



AOM Topic, Group 2
Paul Weis



AOM Travel, Group 3
Mike Teska



AOM Open, Group 4
Kurt Flock



AOM Travel, Group 3
Ed Ogle



AOM Travel, Group 2
Paul Weis

LPS Youth Showcase Winners

Architecture

Digital 1st—Emmanuel Quintana, CETC
Digital 2nd—Maggie Hoffman, Windsor HS
Print 1st—Emmanuel Quintana, CETC

Color

Digital 1st—Nehemiah Ryan, Windsor HS
Digital 2nd—Megan Hahn, Windsor HS
Digital 3rd—Savannah Willis, Mountain View HS
Digital 4th—Camryn Fritch, Windsor HS
Print 1st—Leon McCauley, Windsor HS
Print 2nd—Natalie Bussell, Windsor HS
Print 3rd—Caroline Behnke, CETC
Print 4th—Emma Vincent, Windsor HS

Monochrome

Digital 1st—Leon McCauley, Windsor HS
Digital 2nd—Asa Hicks, Poudre HS
Print 1st—Liam Abbott, Boulder HS
Print 2nd—Aspyn McDonald, Mountain View HS
Print 3rd—Benjamin Adams, Boulder HS
Print 4th—Grayce Kramer, Windsor HS

Photojournalism

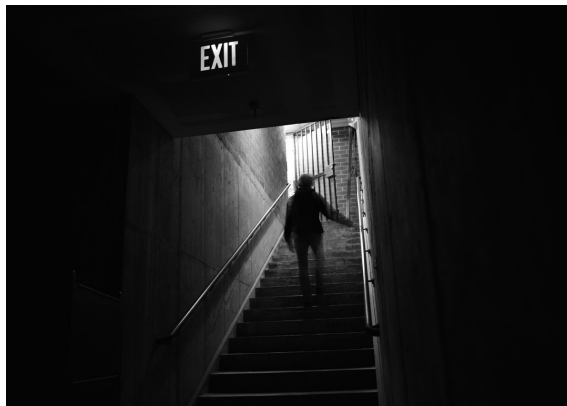
Digital 1st—Nicholas Ward
Print 1st—Megan Hahn, Windsor HS
Print 2nd—Brooklyn Kopren, Windsor HS
Print 3rd—Lucy Phillips, Monarch HS

Portrait

Digital 1st—Jaziel Cordova, Frederick HS
Digital 2nd—Jillian Lawler, Frederick HS
Digital 3rd—Hailey Goad, Windsor HS
Digital 4th—Isabel Sakariassen, Windsor HS
Print 1st—Kailey Severson, Monarch HS
Print 2nd—Maggie Hoffman, Windsor HS
Print 3rd—Maggie Hoffman, Windsor HS
Print 4th—Anita Schicchi, Boulder HS

Landscape

Digital 1st—Natalie Bussell, Windsor HS
Digital 2nd—Maya Edelen, Frederick HS
Digital 3rd—Mike Nold, Boulder HS
Print 1st—Camryn Fritch, Windsor HS
Print 2nd—Trystan Scheer, Windsor HS



*Exit—Leon McCauley
Monochrome*



*Focus—Nicholas Ward
Digital Photojournalism*



*San Fran—Emmanuel Quintana
Digital Architecture*



*Eye of Apollo
Nehemiah Ryan
Digital Color*



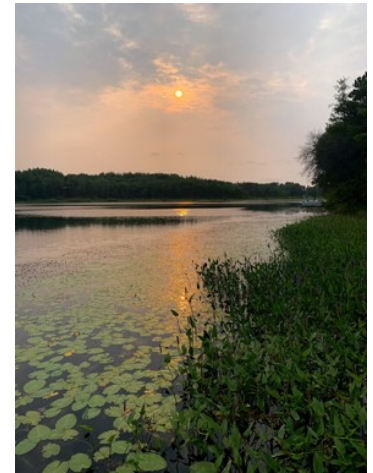
*Diamond Dimensions—Natalie Bussell
Digital Landscape*



*Ring of Fire—Liam Abbott
Print Monochrome*



*Baluarte—Emmanuel Quintana
Print Architecture*



*Sunset Lake—Camryn Fritch
Print Landscape*



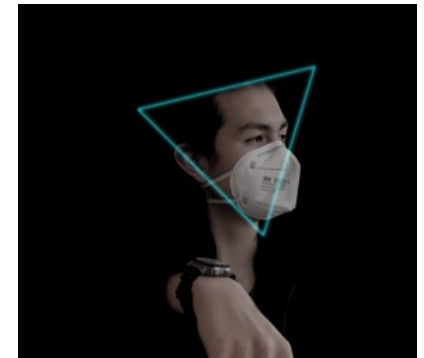
*The Explorer—Leon McCauley
Print Color*



*Pin It to Win It—Megan Hahn
Print Photojournalism*



*Eve—Kailey Severson
Print Portrait*



*Gael Masked—Jaziel Cordova
Digital Portrait*

Podcast: Finding the Why

In an interesting interview on the podcast *F-Stop Collaborate and Listen*, Jeanie Sumrall-Ajero visits with host Matt Payne about her life journeys that have led her to her current story as a nature photographer. She reflects on the way her past experiences have shaped the why of her photography style and discusses a personal photography project on which she is working. Jeanie has been an active member of LPS since 2017 and serves as one of the LPS competition judges. You can find the podcast here and then take time to consider your own approach to the art and craft of photography: <https://www.mattpaynephotography.com/.../finding-your-why/>

Other photographers Jeanie has recommended that she has found inspirational: Dave Showalter, Karen Hutton, Kristi Odom, Eileen Rafferty, Sean Tucker.

Photo Editing Programs

Here are three software programs that include filters and other editing capabilities:

Smart Photo Editor—This is a purchased product from Anthropics.com, currently \$30, with numerous editing tools and hundreds of pages of special effects you can add to your uploaded photo. This can be installed as an external editor to Photoshop and Lightroom, in the same way as the NIK collection filters.

Lunapic—It's a fun free online photo editor that includes editing tools and a plethora of filters and art effects, including sketching, painting, and animation.

Tuxpi.com—add free fun effects to your photo, such as kaleidoscopes, swirls, specialty borders, and re-toning.

Photo Opportunities

Mid April–Mid June—Arizona's peak blooms of desert wildflowers and cactus, central and southern Arizona. The most commonly found cacti are Englemann prickly pear. Best to reserve motels early, as this is a popular tourist season.

May—Fine dates to tour Bear Creek Lake Park, 15600 W. Morrison Rd. Fishing, road and mountain biking, a sand beach for swimming in season, rarely crowded. Fees are \$10 for adults, \$5 for seniors 60+ (a bargain). One's state park pass does not apply; this is a city park. Note that the facilities may change dramatically, as there is a proposal to expand the reservoir size another 20,000 acres. Some amenities may disappear. The park also offers nature programs (such as "Daytime Raptors"), but are not found on the website at present, so call 303-697-6159. Website is www.bclp@lakewood.org

May 14—Signup date for Macro Photography class (\$15, 2 hours + entrance fee) at Butterfly Pavilion, 6252 W. 104th Ave., Westminster. Go to their website to register for both the class and timed entry for that day. Regular admission is \$14.50 for adults, \$12.50 for seniors 65+. Hours are 9-5, 7 days; info. at 303-469-5441. Masks are optional. Note that a big, new facility opens in 2025. Website is www.butterflies.org

May 17—The date of early entry deadline in the American Landscape 2022 Photo Contest. The grand prize is \$2,000 cash plus 14 other prizes. Second prize is \$500 cash plus 10 more, 3rd prize is \$250 cash plus 10 more. One entry is \$25, 2 entries is \$35. Enter at www.outdoorphotographer.com. Note that your subject is wild landscapes. The final deadline for entries is May 31.

Roger Owens, rogerlowens@comcast.net

Photo Challenges

Stretch your photo skills and find motivation by participating in various online photo challenges. Here are a few suggestions.

18 Fun Photography Challenges—challenge ideas to try at any time; feel free to post on the LPS Members Only Facebook page <https://fixthephoto.com/blog/contests/photography-challenges.html>

The Trevor Carpenter Photo Challenge—Images shot during challenge week; post in FB group (public) and/or on Flickr <https://photochallenge.tempusaura.com/guidelines/>

Digital Photography School—new images taken during challenge week <https://digital-photography-school.com/weekly-challenge/>

PSA 365-Day Challenge—Members only. Shoot new images or pull from archives <https://psa-photo.org/index.php?365-day-gallery>.

Call for Entry

Entry deadline for the 38th All Colorado at the Depot art show is May 15, 2022, with exhibition dates from July 19 through August 27. The gallery is located at 2069 West. Powers Avenue in Littleton. The entry fee is \$35 for up to three images. The show includes both traditional and digital photography, as well as other types of artwork. All artwork must be created within the last three years and must be for sale; The Depot Art Gallery will retain 30% commission on all sales. There is over \$2000 in cash prizes. For all details and to enter, go to https://artist.callforentry.org/festivals_unique_info.php?ID=10024

LPS Board Meetings Open to All Members

The LPS board will now be holding its meetings in person at the Perkins restaurant on West Eisenhower in Loveland. The meetings are open to all members. If you are interested in seeing how your leadership team tends to club business, you are welcome to attend.



Share your photos and keep in touch with LPS when you join our Facebook group **Members of Loveland Photographic Society**. You must be a current member to join the group.

JOIN THE CLUB

If you are reading this newsletter as a non-member and would like to join the Loveland Photographic Society, go to the main page on the www.lps.cc website and click on **Membership > Join or Renew**. Annual dues are \$45.

Member Submissions Request

Share Your Travel Story

Now that loosening COVID restrictions are allowing us to begin making travel plans once again, LPS members are most likely finding places to take their cameras. If you have made a trip to an area that you feel would be of interest to other photographers, write a short article describing your experience and include your photos and submit to the newsletter editor: ardeth.carlson@gmail.com

Photography Tools

Tilt-shift lenses, fisheyes, ultra-fast shutter controls, portable lighting setups, camera straps—options for tools to add to your camera bag seem limitless. For those of us who have pondered what innovative equipment would help boost our photography experience, your first-hand experience would be helpful.

Your Favorite Photography Location

Where do you love to take your camera in the Colorado Front Range—or even farther afield? Share one of your go-to spots with other LPS enthusiasts! Write an article for InFocus or just send some basic info to be included in a future issue, and include one or two photos from that location. Send to ardeth.carlson@gmail.com.

Topaz Software Bundle

In the presentation by J.R. Schnelzer at our April meeting, one plug-in he recommended is the Topaz DeNoise AI. It might be of interest to club members to note a current bundle offer from Topaz Labs of their top three photo apps, Denoise AI, Sharpen AI, and Gigapixel AI, for the price of \$159.99. This offer is only available through May 9. The purchase is for ownership plus unlimited upgrades for one year and can be downloaded and installed on up to 2 computers. On the Topaz Labs website, look for the Image Quality Bundle: <https://www.topazlabs.com/shop>

The LPS Affiliate Program

The following companies have offered LPS various programs for the club and anyone who uses the special **Affiliates** link provided on the website to make purchases.

- ◆ Adorama
- ◆ Feisol
- ◆ MindShift Gear
- ◆ Red River Paper
- ◆ Think Tank Photo
- ◆ Topaz Labs

It's important to use the links on the LPS website **each time you order**. Otherwise, you and LPS will not receive the benefits of the program each company offers.

Accessing the LPS website

Be sure to enter www.lps.cc to access the website. Without including the [www](http://www.lps.cc), you will likely get an error message.