

# LPS InFocus

Loveland Photographic Society  
Monthly Newsletter

February 2024



## Your New Eyes Photos

### ARDETH CARLSON

Back in the December newsletter, the Program Committee announced the New Eyes for Photo Edit activity for LPS. From unedited photos submitted by members via the website, the committee selected six photos for this project. These photos were put into a One Drive account at [Unprocessed Images](#) available for download by members to edit in any way they choose.

There is a deadline of February 5 for members to submit 1 to 3 of the photos they edited. Submissions are made on the LPS website, under **Competitions>Submit Images to a Competition>#2 New Eyes**. If you have not yet submitted edited photos, title your edited photo by using use your name, the word "Edit" and the original image caption; for example, if I edited the sand dunes photo, I would title my edited photo as Carlson\_Edit\_Sand Dunes.

This is separate from the monthly competition, and none of the photos will be judged or scored. The February club meeting will feature the photos edited by LPS members. All of the edited images submitted by members will be shown for the program. The meeting time will include comments about editing and group discussion.

Zoom participants are welcome to join in the discussion, and we promise to keep an eye on the chat field in case there are issues with the sound that we are not aware of at the in-person meeting.

## Below the Knee: February Monthly Topic

The monthly topic is "Below the Knee." This is a creative topic that allows you to use your imagination to interpret the theme. It does not need to be a picture of your shins, ankles, feet or toes! (Although it can be literal, too!) Here are two suggestions:

#1 is to lie on the floor or the ground to shoot your photo; for example, take a picture of your dog's face from floor (below the knee) level. Or place your camera on a very low tripod like the Platypod or on a beanbag and use a remote shutter to take the photo from ground level.

#2 would be to take a photo of something that's obviously on the floor or ground and is not taller than the area below the "average" adult's knee, such as a photo of a dandelion or a small colored ball. As a sometime LPS judge, I would suggest including enough of the setting to make it obvious that the object is on ground level and is smaller than the area below the knee—if it's just a closeup of a ball, it would not be possible to estimate the size of the ball.

Just think of things that happen at ground level as opposed to eye level or sky level, and have fun capturing a perspective of life you might not have considered before.

## Club Meetings

Monthly club meetings are hybrid in-person plus Zoom; the Saturday Chat is in-person only; the Photo Review Session is online only. **Note the new meeting links; no pass code is needed.**

### Saturday, February 10

#### Saturday Photo Chat

Loveland Panera Bread  
1550 Fall River Drive, Loveland  
8:30–10:30 AM

### Monday, February 12

#### Monthly Club Meeting

Trinity United Methodist Church  
801 Cleveland Avenue, Loveland  
Social time 6:00 PM  
Meeting 6:30–8:30 PM

[https://us06web.zoom.us/j/93226580276?](https://us06web.zoom.us/j/93226580276?pwd=eWxtbVYzTGpWbWlYy3lscGNwbWZRdz09)

[j/93226580276?  
pwd=eWxtbVYzTGpWbWlYy3lscGNwbWZRdz09](https://us06web.zoom.us/j/93226580276?pwd=eWxtbVYzTGpWbWlYy3lscGNwbWZRdz09)

### Monday, February 19

#### Photo Review Session

6:30–8:30 PM

[https://us06web.zoom.us/j/95087721084?](https://us06web.zoom.us/j/95087721084?pwd=eXlMndWenQyaCt6WUV6RmpenlWdz09)

[j/95087721084?  
pwd=eXlMndWenQyaCt6WUV6RmpenlWdz09](https://us06web.zoom.us/j/95087721084?pwd=eXlMndWenQyaCt6WUV6RmpenlWdz09)

### Tuesday, March 5

#### LPS Board Meeting

Perkins Restaurant  
2222 W. Eisenhower, Loveland  
6:30 PM  
*Open to All*



## SERVICE

### Publicity Chair Duties

We are still looking for someone to take on the role of publicizing our club. Currently Jerre Johnson sends a notice of our club meeting to Loveland's Reporter-Herald newspaper to be included in their meeting notes section, and Ardeth Carlson oversees the Members-only Facebook group, creating posts with information about the upcoming meeting topic and encouraging discussions. We also have a public Facebook group. Having one person who can come up with social media content and can come up with other ways to boost our presence in the community would be welcome.

### Volunteer in 2024

What could 2024 bring for LPS? Ideas abound—but what do they need in order to be accomplished? Volunteers!

LPS will be facilitating the Larimer County Fair Open Class Photography competition again this year, having gained some experience from our experience last year. Ardeth Carlson has agreed to serve as the supervisor for the competition again in 2024 and will be looking for, yes, volunteers. She would like to have a few people serve on a planning committee to make decisions on improving the process.

The Board would like to have a committee to organize a club picnic this summer. Ideas to discuss: Have advance signups and cancel if there is not sufficient interest. Or pay for catering rather than potluck. Or include specific activities at the picnic. More planning needed. Volunteers.

A unique activity might be a photo scavenger hunt. How would this work? Not sure, need a planning committee.

A committee is not a lifetime commitment, just a few people willing to get together and make decisions about what, when, where, and how.

### New Field Trips Chair

Jim Roode has volunteered to take on the responsibilities of Field Trips Chair. This role has been vacant since COVID, so there has been no point person in LPS to facilitate organization of field trips. Getting together with other photographers on a photoshoot outing is something many of us especially enjoy. Jim has compiled a plan for this on which he will elaborate at the February meeting:

- Field trips would be suggested by the members and voted on in the forum and/or Facebook (TBD).
- The suggestion list would be a continuing list with the oldest 3 removed at the end of voting.
- The trips to be voted on in the month prior to the trip would be:  
Last month's #2  
The top 3 in the list
- Voting is a commitment to attending the field trip voted for.
- Members who fail 3 times to attend a trip they voted for can still attend trips but lose trip voting rights for the rest of the year.
- Trip information would include:  
Destination with description and suggested date  
Any restrictions to the maximum number of vehicles or participants  
Depart and return time  
Percent of walking and percent of driving  
Type of terrain, both walking and driving
- Vote would specify:  
Whether driving or riding; if driving, number of passengers you feel comfortable with  
Vehicle type
- Drivers can accept but not solicit fuel donations.
- Participants will sign a waiver form so that the club or its officers and members cannot be sued.

The plan is still being refined, and comments and suggestions are welcome.

### Subscribe to Field Trips Forum Topic

To receive updated information on field trips, go to Discussion Forums on our website, scroll down to Field Trips—LPS Sponsored. Click on "View Topic" to see the information about a specific proposed field trip and to ask questions, comment, or indicate your interest or commitment. Click on "Subscribe" to get updates on that specific field trip.

Currently Jim Roode has posted information on a possible field trip to Big South Falls, depending on interest by members.

### LPS Board of Directors

#### ELECTED OFFICERS

PRESIDENT

— ARDETH CARLSON

VICE PRESIDENT

— RICH KREBS

TREASURER/MEMBERSHIP

— JEN LAMMEY

SECRETARY

JERRE JOHNSON

#### CHAIRPERSONS

PROGRAMS

—TIM KATHKA

—RICH KREBS

— RUTH SPRAIN

COMPETITION

— ROB HUFFSMITH

WEBMASTER

— MIKE TESKA

MENTOR

—MIKE WILCOX

PSA REPRESENTATIVE

LISA SCHNELZER

SCHOLARSHIPS

— RUTH SPRAIN

NEWSLETTER

—ARDETH CARLSON

FIELD TRIPS

—JIM ROODE

FORUM DIRECTOR

—INGRID JACOBSON

GREETING HOST

—BILL LUNDQUIST

The LPS Board holds its meetings in person at the Perkins restaurant on West Eisenhower in Loveland. The meetings are open to all members. If you are interested in seeing how your leadership team tends to club business, you are welcome to attend, although only Board members can vote. Information is on page 1 of the newsletter.



## MEMBER PROFILE

### Jen Lammey

Hello! My name is Jen Lammey, and I am excited to take on the role of LPS treasurer and membership chair. I am a high school photography teacher at Mead High School in Longmont. When I took the job four years ago, I didn't know what I was being hired for, and to my surprise, I was assigned beginning and advanced photography, as I had specifically not mentioned that on the skills portion of my resume. Learning photography with my students has been enjoyable, and I love it. My favorite things to shoot are sports and nature, and I am beginning to explore portrait photography. I am interested in physically altering photographs through methods such as embroidering photography that changes the image's meaning after it has been printed. This past summer, I took a class on lumen printing, where you take expired photographic paper, place an object on it, and expose it to the sun. You never know what result you will get, which makes experimenting fun.



I joined LPS to meet others who were passionate about photography. I still consider myself a beginner with some basic knowledge. Photography has been an essential part of my life as it is a great way to connect with people and pay attention to the small details of the world around us. I always tell my students we are trying to tell a story with our photographs and to capture something to hold the viewer's attention. I am trying to get out of my comfort zone of photographing anything other than people and am now interested in exploring portraits, people, and animals.

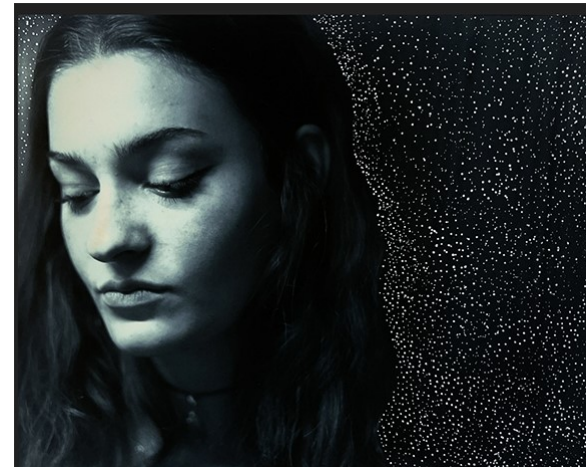
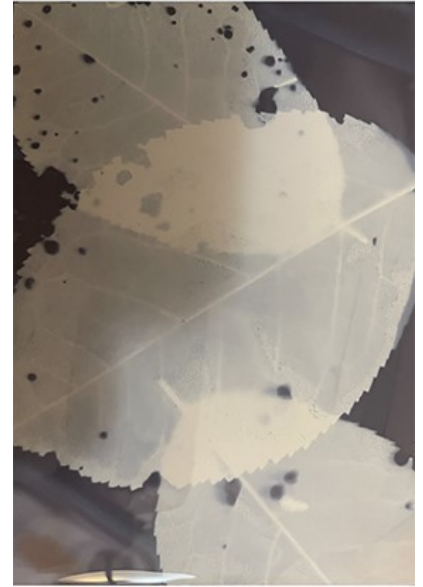
I have been a Canon person simply because a Canon T3i was the first camera I purchased years ago. I bought the camera to take reference photos for my drawing and printmaking endeavors, but it mostly sat in the closet until I started teaching four years ago. I have since upgraded to a mirrorless EOS R camera, and my favorite lens is my new Sony FE 200-600. My workhorse lens is the 70-200, which is also great for portraits.

I live in Fort Collins with my husband, two teenage daughters, a dog, a kitten, and a hamster. My husband and I are both Navy veterans and appreciate the opportunity to travel the world and serve our country. I love to hike and fish and enjoy our beautiful state.

I look forward to many great photography conversations with you all!



*Photos © Jen Lammey*



# Competition Corner

## Submitting Pictures for the Monthly Competition or Photo Review Session

- Log on to the LPS website
- Mouse over the **Competitions** dropdown on the Home Page.
- Select menu item:  
**Submit images to a Competition**
- Select the Competition category or the Third Monday Photo Review
- At the bottom of the screen, click on **Upload images into the Competition.**
- Then click on the button **Select** which will open a window on your computer to select an image.
- Click on **Save Images and Proceed to Edit Page.**
- Type in a title and click on **Save any changes and return to original page.**
- You can replace any photo, up to the submission deadline, if desired.

The monthly competitions allow a single image per category. The photo review session allows up to three images.

## New Members

We are happy to welcome these new members:

Sean Markus  
Chris Rice

## February Competition

### Competition Categories

Open Projected (included every month)

Nature—Wildlife

Monthly Topic: Below the Knee

### Submission Deadline

Before Midnight, Monday, February 5

### Please keep the judging criteria in mind:

**Impact and Viewer Interest**—"Wow" factor is the nebulous quality where an image "pops." This subjective aspect of judging should not preempt the technical or composition aspects of an image.

**Composition**—Good composition is a pleasing arrangement of the elements in an image. There are many guidelines for good composition that judges may consider.

**Technical Quality**—This includes sharpness, focus, color, tonal scale, contrast, appropriate depth of field and other qualities. Consideration is also given for the effect the photographer was trying to achieve such as high key, multiple exposure, or selective focus.

**Monthly Topics**—The subject matter should be related in some manner to the topic. While there are no formal deductions or penalties, judges may reduce their overall score if they feel the image does not align with the monthly topic. With that said, creative interpretation is encouraged, except in categories with specific rules such as monochrome.

**Open Projected**—The image must begin as a photograph. From there, it is up to you. Any photograph may be entered in the Open Projected category.

## February Competition Groups

Participation in a group is determined by the average of the member's 9 previous LPS competition scores. Here are the groups for the February competition:

Group 5—Kevin Burkhardt, Ingrid Jacobson, Tim Kathka, Laurie Paulik, J.R. Schnelzer, Lisa Schnelzer, Ruth Sprain, Jeff Stephenson, Mike Teska

Group 4—Jenny Anderson, Gerald Baumann, Max Coopwood, Robert Huffsmith, Dan O'Donnell, Ed Ogle, Malcolm Patten, Alan Schuppan, Bob Smith, Mike Wilcox

Group 3—Ardeth Carlson, Kevin Clarke, Kevin Fettig, Kurt Flock, Marvin Froistad, Tim Hitchcock, Jerre Johnson, Rich Krebs, Bob McDonnell, Octavio Noda, Josemaria Quera, Dave Van Riper

Group 2—Wayne Snodderly

All other members will compete in Group 1 until the member has 9 submitted images that reach an averaged score for a different group. An individual member's competition group might vary from month to month.

The range of 9-score averages in LPS competition are as follows:

Group 5 > 22.3 (greater than)

Group 4 <= 22.3 (more than 21.3, less than 22.3)

Group 3 <= 21.3 (between 20.0 and 21.3)

Group 2 <= 20.0 (between 18.6 and 20.0)

Group 1 <= 18.6 (less than 18.6, and all members who have not yet entered 9 competitions. )

## 2024 Competition Topics

Specific assignments are to be determined on a month-by-month basis; these are the topics for the year listed in alphabetical order:

Autumn Splendor  
Indoor Magic  
Landscapes  
Macro  
Still Capture  
Street Photography  
The Color Orange  
Transportation  
Zigs & Zags

## Nature—Wildlife Category

This month's Nature—Wildlife category encompasses all the rules of the Nature category but adds additional restrictions.

All nature images must convey the truth of the scene that was photographed. A well-informed person should be able to identify the subject of the image and be satisfied that it has been presented honestly and that no unethical practices have been used to control the subject or capture the image. Images that directly or indirectly show any human activity that threatens the life or welfare of a living organism are not allowed.

The most important part of a Nature image is the nature story it tells. High technical standards are expected and the image must look natural.

As a reminder, here are the do's and don'ts for Nature competition:

### Allowed digital adjustments:

- Adjust exposure, contrast, saturation, and highlight and shadow detail
- Correct white balance/color
- Convert to black & white (grayscale only)
- Remove noise, dust spots, flares
- Crop, straighten
- Sharpen (including focus stacking)

### All adjustments must appear natural.

If you want to add a border to differentiate from the screen background, it should be single white or gray no wider than 5 pixels.

### Not allowed:

- Sky replacement, cloning anything in or out, or moving any objects
- Vignetting, post-processing blurring or burning or otherwise darkening in order to obscure parts of the image
- Images of feral animals, like wild horses, and domesticated animals such as cattle, and cultivated plants

- Watermarks or copyright text
- Any evidence of humans in the photo, such as roads, bridges, telephone poles/lines, fences, vehicle tracks, or buildings. The only exception is in cases where a manmade feature is integral to the nature story, such as an osprey in a human-built nest platform or sandhill cranes in a cornfield.
- Use of fisheye lens

### Additionally, for the Nature—Wildlife category:

- Zoological organisms must be living free and unrestrained in a natural or adopted habitat of their own choosing
- Images of zoological organisms that have been removed from their natural habitat, are in any form of captivity or are being controlled by humans for the purpose of photography are not allowed
- Botanical organisms may not be removed from their natural environment for the purpose of photography
- Images that have been staged for the purpose of photography are not allowed

Before you submit a photo for this competition category, to avoid having a disqualification, please take a good look at your image to be sure it follows all of these requirements.

## Photo Opportunities on the LPS Website

Log in to [www.lps.cc](http://www.lps.cc) as a member

🔗 Click on *Discussion Forums*

🔗 Scroll down to  
*Upcoming Photo Opportunities & Events*

🔗 Click on  
*View Topics*

If you would like to receive notifications with the latest activity at the forums, you will need to subscribe to the forums of your choice.

## Change in 2024 LPS Monthly Topics

The Board has instituted a change in the presentation of monthly topics. Rather than listing a topic for each month of 2024, the topic will be determined on a month-by-month basis.

In addition to encouraging the members to shoot specifically for the monthly topic, it also allows for flexibility in matching a monthly competition topic to a speaker presentation. As an example, if our meeting focusing on Street Photography would happen in June, the competition topic for July could be Street Photography. At times in the past we have had a monthly topic in one month and then in a following month we had a speaker on that topic.

You can still look at the 2024 topic list and take photographs ahead and then submit when the topic is assigned.

## Future LPS Meetings

The Program Committee members, Rich Krebs, Ruth Sprain, and Tim Kathka, work hard to schedule speakers and presentations for our club meetings. This involves trying to find speakers who have the availability to attend a meeting and are willing to do so for a small honorarium of \$50 and which include topics the committee hopes will be of interest to LPS members. Suggestions for hands-on activities at some of our monthly meetings have included doing setups at meetings for macro, still life, portraiture/portrait lighting, and street photography.

If you have an area of expertise you can share or know of presenters with topics you believe would be helpful and of interest to the club, the Program Committee would like to hear from you.

To share your thoughts about future LPS meetings and what you would like to see, contact Ruth Sprain of the Program Committee: [rsprained@comcast.net](mailto:rsprained@comcast.net).



## LPS January Best of Show

All competition photos and scores can be viewed on the LPS website under Competition Results. Check the box "Display All."



BOS Topic, Group 5  
Lisa Schnelzer



BOS Open, Group 5  
Jeff Stephenson



BOS Open, Group 4  
Jerry Baumann



BOS Open, Group 3  
Dan O'Donnell



BOS Topic, Group 4  
Jerry Baumann



BOS Mono, Group 5  
Kevin Burkhart



BOS Mono, Group 4  
Jerry Baumann



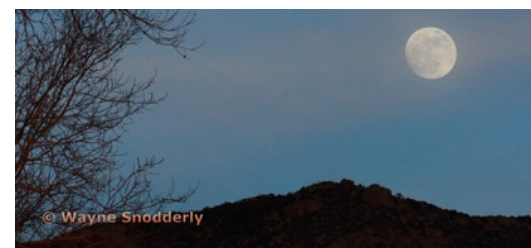
BOS Mono, Group 3  
Kevin Fettig



BOS Topic, Group 2  
Wayne Snodderly



BOS Topic, Group 3  
Ardeth Carlson



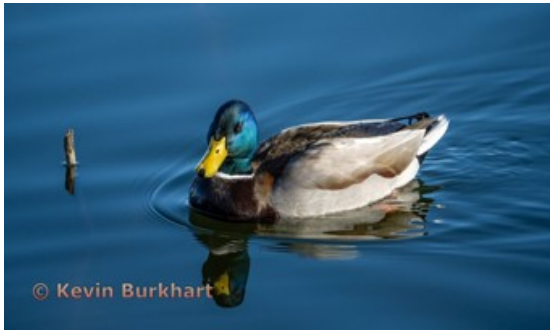
BOS Open, Group 2  
Wayne Snodderly



BOS Mono, Group 2  
Wayne Snodderly



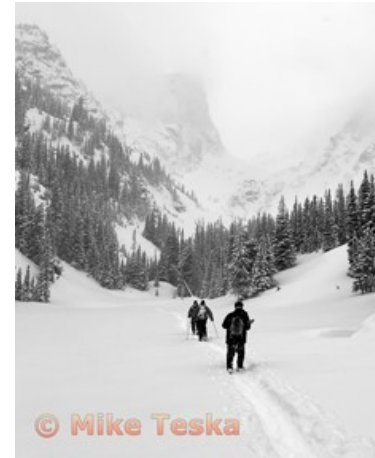
**LPS January Award of Merit**



AOM Topic, Group 5  
Kevin Burkhart



AOM Open, Group 5  
Mike Teska



AOM Mono, Group 5  
Mike Teska



AOM Topic, Group 4  
Robert Huffsmith



AOM Open, Group 4  
Ed Ogle



AOM Mono, Group 4  
Ed Ogle



AOM Topic, Group 3  
Jerre Johnson



AOM Open, Group 3  
Kurt Flock



AOM Mono, Group 3  
Jerre Johnson

## PSA Interclub Competitions

LPS is a member club of the Photographic Society of America and has been participating in three divisions of interclub competition: Nature, Print, and Travel. There are three rounds of competition per season, with deadlines on November 15, February 15, and April 15.

LPS members who are interested in having their photos considered for our club's submissions to a PSA interclub competition can contact the LPS rep for more details.

### NATURE DIVISION:

**Dan O'Donnell, LPS Rep**  
[djod@me.com](mailto:djod@me.com)

Nature Division (ND) image guidelines can be found at <https://psa-photo.org/page/nature>. Dan is looking for images that illustrate an interesting behavior or a unique point of view, not just a landscape or wildlife that is in good focus! Storytelling is an important part of the image. Maximum image size is 1920x1080 pixels.

### PICTORIAL PRINT DIVISION:

**Lisa Schnelzer, LPS Rep**  
[lisaschnelzer@gmail.com](mailto:lisaschnelzer@gmail.com)

The five image categories in the Pictorial Print Division (PPD) are: Small Color, Large Color, Small Monochrome, Large Monochrome, and Creative Altered Reality. For further information regarding submissions, contact Lisa.

### TRAVEL DIVISION:

**Rich Krebs, LPS Rep**  
[rkrebs318@gmail.com](mailto:rkrebs318@gmail.com)

A definition of a travel photo and a PDF of the Travel Division (PTD) guidelines can be found at <https://psa-photo.org/page/photo-travel>. Rich is collecting images for 2023-2024 now and would like images that show characteristic features of a place or a people. Image size should be a maximum of 1920x1080 pixels.

## Interclub Photos Needed

The LPS reps for the PSA interclub competitions are asking members to submit photos for round 2 before February 10. LPS members do not need to be individual members of PSA. Photographers who have photos submitted in a PSA interclub competition must have a signed release form on file. The signed release is valid for three years from the date of signature, after which a new signed release must be submitted to continue participating in interclub competitions. The signed release forms are obtained by the LPS reps, who will contact a member who submits a photo but does not have a current release.



## PSA Colorado Chapter News

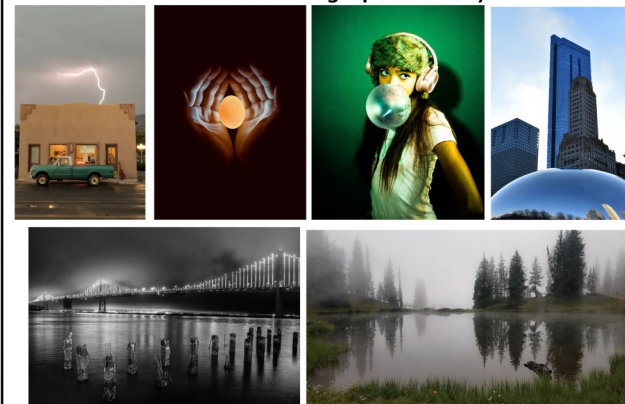
If you are a member of the Colorado Chapter of PSA, you are eligible to submit a picture for the 2024 PSA Chapter Showcase. Images should be a maximum width of 1400 pixels, maximum height of 1050, and can be color or monochrome; send to Bill Holm at [bnholm@juno.com](mailto:bnholm@juno.com) by February 15.

The chapter board will meet and select the 12 images that will be entered in the Showcase. All chapter entries will be included in a digital slide show to be presented at the annual PSA Conference. A copy of the Chapter Showcase slideshow will be provided to each participating Chapter and will be available, by request, following the initial showing at the Conference. Winning entries will be printed in the PSA Journal after the conference. Hopefully we will have 12 images that will make our new chapter really stand out.

*LPS members who are members of PSA are welcome to join the Colorado chapter of PSA to participate in chapter meetings, field trips, workshops, and the chapter showcase.*  
<https://psa-photo.org/page/chapter-colorado>

## 15th Annual Northern Colorado Youth Showcase 2024

Loveland Photographic Society



**WHO:** High School Students

**WHAT:** Enter digital and/or print photos for competition in 6 categories

**WHERE:** Get details from your art or photography teacher

**WHEN:** Deadline for entries is Friday, March 1, 2024

**WHY:** Prizes given to winner in each category and Best Senior Award

Sponsored By:



Jax Mercantile in Loveland, CO

## 2024 LPS Youth Showcase

Young photographers of high school age in Northern Colorado have the opportunity to submit their photos for the LPS-sponsored youth showcase competition and receive prizes and recognition locally and also internationally when winning photographs are exhibited at the annual PSA Photo Festival. All of this is thanks in major part to Ruth Sprain, who heads the Youth Showcase Committee and is the liaison with the PSA Youth Showcase. If you know any of the photography teachers at area high schools or any home-schoolers, be sure they know about the LPS competition and can encourage their students to submit entries.



## PSA Interclub Print Competition Results

Members of LPS excelled in Round 1 of the PSA Interclub Pictorial Print competition, winning 5 awards by 3 different members:

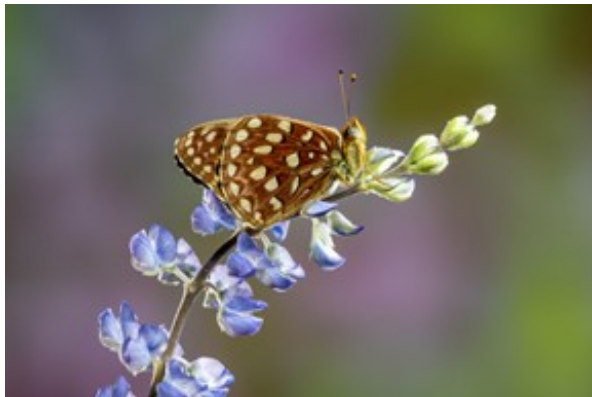
Small Color, 1st place—"Splash Study in Blue and Yellow" Lisa Schnelzer

Large Color, 3rd place—"Inside Out" J.R. Schnelzer

Large Color, HM—"Duck Family" Lisa Schnelzer

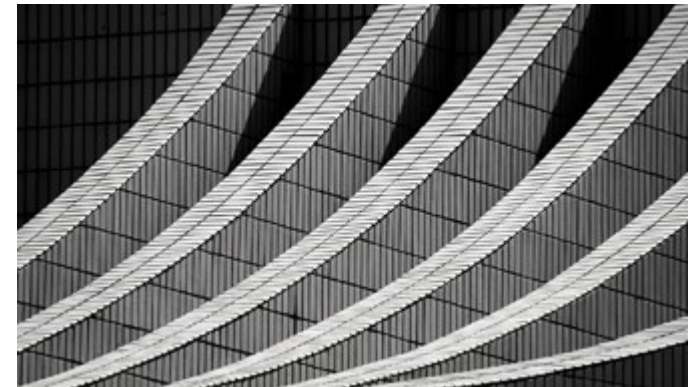
Large Mono, HM—"Patterns" Guy Wagner

Creative Altered Reality, 3rd place—"Pushing the Bubble" J.R. Schnelzer



## Other Awards

In addition to receiving Honorable Mention in the PSA interclub print competition, Lisa's "Duck Family" photo was selected to appear in the 2024 Jax Farm & Ranch calendar in the month of June, as well as her photo "Fritillary Butterfly on Lupine" in the month of May.



## Saturday Photo Chat

The Saturday Photo Chat, formerly known as the "Bull Session," is an informal get-together of photographers to talk about places to photograph, gear, photo software, and almost anything about photography. This has been an ongoing activity for many years, headed by long-time LPS member Bill Standerfer. The meetings are on the second Saturday of the month at 8:30 AM at Panera on east Highway 34 in Loveland. If you have any questions, contact Bill at [billstanderfer@outlook.com](mailto:billstanderfer@outlook.com).

## Third Monday Photo Review

An excellent way to get feedback on your photos and for experienced photographers to share their knowledge is to participate in the Monday Photo Review sessions via Zoom on the third Monday of each month. Participants are allowed to submit three photos no later than noon of the session day. The review is mentored by Mike Wilcox, who welcomes and encourages comments and suggestions by all participants. Many members have reported that they have received a greater knowledge of photo techniques and also found it helpful to see their photos in the eyes of other photographers. Because judges of the monthly competition most often do not have time to offer critiques on all of the competition photos, the third Monday review provides that helpful aspect of improving our craft. Click on the link on page 1 of the newsletter to join the Zoom meeting.

## Newsletter Index

The newsletter index has finally been updated (the newsletter editor says *mea culpa!*). In the index, the titles of the articles are displayed in alphabetical order. To find a specific article, the index shows the year and month of the issue of the newsletter and page number on which the article appears. In order to look at the article, you then need to go back to Newsletters and select the issue you want.

## LPS Membership

Although LPS welcomes guests to our monthly club meetings, there are benefits to joining as a member. If you like to see how your images fare in competition, you can submit up to 3 photos each month in our club competitions; you also have the opportunity to have an image submitted in the PSA interclub competitions.

If you hate competitions (!), the club is also a great place to meet other photographers, get critiques and comments at the Third Monday Review sessions, find photo-op events and activities, and watch the recordings of meeting presentations. You might enjoy organizing and leading field trips or participating in them. You can also meet up with LPS members at the monthly Saturday morning Bull Sessions.

Your membership dues also fund our annual Youth Showcase, which encourages photographers from our northern Colorado high schools to pursue the art of photography and provides them with an opportunity to have their images displayed with national/international exposure at the annual PSA Photo Festival.

## LPS Speaker Recordings

As a reminder, LPS meeting presentations have been recorded and posted ever since the start of COVID and are available to view at any time. You can find links to the videos on the LPS website; when you **login**, go to **Membership>Resource Links>Videos**. Most of our speakers have graciously allowed us to record their presentations as long as they were made available to LPS members only. Please *do not share* these links with non-members unless they are marked as shareable in the list.

If you have questions or want to volunteer for any of our various committees and activities, you can use the members-only Facebook group or email [ardeth.carlson@gmail.com](mailto:ardeth.carlson@gmail.com).

## Editor Oops!

Your editor just had to laugh at the error in the January 2024 InFocus newsletter, in which on the first page it says Joel Sartore "presentated" the program! Hope you had a good chuckle also as we begin a new year!

## JOIN THE CLUB

If you are reading this newsletter as a non-member and would like to join the Loveland Photographic Society, go to the main page on the [www.lps.cc](http://www.lps.cc) website and click on **Membership > Join or Renew**. Annual dues are \$45.

Share your photos and keep in touch with LPS when you join our Facebook group **Members of Loveland Photographic Society**. You must be a current member to join the group.



## LPS InFocus

The e-Newsletter for the  
Loveland Photographic Society

### Mailing Address

P. O. Box 7604 • Loveland, CO 80537

### Public Facebook Page

[https://www.facebook.com/  
LovelandPhotographicSociety/](https://www.facebook.com/LovelandPhotographicSociety/)

### Members Only Facebook Group

[https://www.facebook.com/  
groups/237033251716/](https://www.facebook.com/groups/237033251716/)