



Club Meetings

Tuesday, March 7

LPS Board Meeting

Mimi's Café

[1450 Fall River Drive](#)

Loveland, CO

5:30/6:30 PM

Saturday, March 11

Photo Bull Session

Daz Bog Coffee Shop

[556 Lincoln](#)

Loveland, CO

8:30–10 :30 AM

Monday, March 13

Monthly Club Meeting

Vineyard Church

Of the Rockies

[900 Josephine Court](#)

Loveland, Colorado

6:30-9:30 PM

Monday, March 20

Photo Review Session

Loveland Library

Gertrude Scott Room

[300 Adams Avenue](#)

Loveland, CO

7:00-9:00 PM



MEMBER
ORGANIZATION

March Meeting Agenda

Ocean Legacy: Inspiring Marine Conservation in the Ross Sea, Antarctica and Beyond

Presented by John Weller

BY TONY PARISO

PROGRAMS@LPS.CC

Our March presentation will take us to an environment few of us have experienced. John Weller, based in Boulder has done extensive work in Antarctica in support of organizations seeking to preserve this vital marine ecosystem. His website <http://www.johnbweller.com/> includes a slideshow and images that are well worth reviewing prior to his presentation. The three minute slideshow is an excellent preview of his presentation and gives you a glimpse of the magnificence of Antarctica. His images attest to his skill as a photographer and the obstacles he overcomes to capture his images. John will have his books available for purchase at our event, the information that follows highlight his achievements as well as his latest book, *The Last Ocean*.

The Ross Sea, Antarctica is special. Protected by a 500-mile-wide shield of floating sea ice, it has remained largely insulated from the depletion that has plagued the rest of the global ocean. And though it is the coldest, driest, windiest place on earth, it teems with life. But driven by global depletion into ever deeper and more remote waters, industrial vessels have come to the Ross Sea in search of its top predatory fish, the Antarctic toothfish. The last intact marine ecosystem on Earth is now at risk.

John Weller is an acclaimed writer, photographer and filmmaker, who works to drive marine conservation around the world. An impassioned observer of nature, he followed a path through the Colorado desert to the waters of the Antarctic. He started The Last Ocean Project with Antarctic ecologist David Ainley in 2004, and began working

Continued on Next Page

LPS Board of Directors

[PRESIDENT](#)

— TONY PARISO

[VICE PRESIDENT](#)

— BOB CARRIER

[TREASURER](#)

— SANDY LOUCKS

[SECRETARY](#)

— MONICA RASMUSSEN

[PAST PRESIDENT](#)

— J. R. SCHNELZER

[PROGRAMS](#)

— TONY PARISO

[MEMBERSHIP](#)

— SANDY LOUCKS

[COMPETITION](#)

— KRISTI NORMAN

LPS Officers

[FIELD TRIPS](#)

— LYNNE LEWIS

[GREETING HOSTS](#)

— JAMIE CARRIER

& INGRID JACOBSON

[MENTOR](#)

— MIKE WILCOX

[PROJECTIONIST](#)

— NEEDED

[PUBLICITY](#)

— JOEY FIELDER

[WEB MASTER](#)

— RICH BILANCIA

[SCHOLARSHIPS](#)

— RUTH SPRAIN

[NEWSLETTER EDITOR](#)

— BILL SHANAHAN

[PSA REPRESENTATIVE](#)

— LISA SCHNELZER

[FACILITY SETUP](#)

— MARVIN FROISTAD



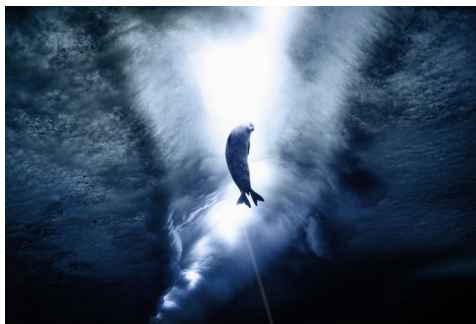
towards conservation of the Ross Sea. After four trips to Antarctica, including three months of diving under the ice as a guest of the United States Antarctic Program, Weller compiled a library of Ross Sea photographs that has become the face of Antarctic conservation efforts worldwide.

Weller's new book, *The Last Ocean*, has received top reviews from *The New York Times*, *Scientific American*, and other publications. It offers a rare glimpse into life in this most southern place, taking the reader on an in-depth journey above and below the icy ocean surface. He challenges us to see that the Ross Sea story is not just that of a fish, or of the incredible creatures that live at the edge of the world. It is our story – the story of our struggle to become sustainable.

Weller has worked closely with scientists, policy-makers, and conservation organizations invested in the Ross Sea, and he helped solidify the coalition of NGO's fighting for Ross Sea protection. He also co-founded The Last Ocean Charitable Trust with David Ainley and New Zealand filmmaker Peter Young in 2007. After more than a decade of work on this issue in collaboration with NGOs, national delegations from many nations, and scientists from around the globe, a Ross Sea marine protected area – the ultimate goal of *The Last Ocean* – is finally on the horizon.

Weller has also partnered with acclaimed cinematographer Shawn Heinrichs and an array of environmental organizations to conceive, create

and deliver national-level media campaigns in support of marine conservation initiatives in many other crucially important regions of the world's ocean. These campaigns have resulted in new shark and manta ray sanctuaries in the Bahamas and Micronesia, new marine protected areas in Indonesia, and new international law protecting manta rays.



**Weddell Seal Under the Ice
at Turtle Rock**

©John B. Weller

Weller was named a Pew Fellow in Marine Conservation in 2009, and he is currently a Fellow of The Safina Center. Most recently, he was honored with the 2016 *International Understanding Through Photography* award from the Photographic Society of America. He continues to work in defense of the Ross Sea and for other important marine conservation measures alongside a team of close collaborators and his wife Cassandra Brooks



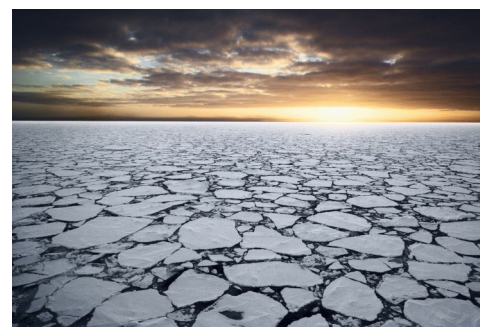
Emperor Penguins

©John B. Weller



Seastars and Anchor Ice

©John B. Weller



Pack Ice in the Ross Sea

©John B. Weller



Adelie Penguins Hunting

©John B. Weller

Competition Corner

BY KRISTI NORMAN
COMPETITION@LPS.CC

March Topic: Chiaroscuro[kyä-rə'sk(y)ōō-rō] — is an oil painting technique, developed during the Renaissance, that uses strong tonal contrasts between light and dark to model three-dimensional forms, often to dramatic effect.

Resources:

<http://www.thephotographus.com/35-gorgeous-examples-chiaroscuro-photography/>

<http://www.americanodream.com/quiz/chiaroscuro-in-photography/>

<https://www.srlounge.com/improve-chiaroscuro-portraits/>

Submission Deadline:

Monday, March 6, 11:59 P.M.

April Topic: Social issue — Homelessness, teen obesity, immigrants, abuse, alcoholism, pollution, transportation, green energy, sexism, climate change, political freedom, education, discrimination, etc.

Submission deadline:

Monday, April 3, 11:59 P.M.

Starting in January 2017 competition points are counted from the previous 12 months (rolling calendar) rather than starting over at the start of each calendar year. LPS members listed below have acquired the required points during the last 12 months to advance to the next competition level.

Congratulations to the following members who have advanced to the next level in January and February:

January

Ruth Spain advanced to Masters 2

Laurie Paulik advanced to Masters

Marvin Froistad advanced to Intermediate

Elaine Verdill advanced to Intermediate

February

Lisa Schnelzer advanced to Masters 2

Renee Perran advanced to Masters

Special thanks to our January and February judges for your expertise and time to support our club competitions!

January judges

Bob Carrier

Renie Poole

JR Schnelzer

February judges

Gordon Middleton

Brice Harbert

Pat Gaines

Future Competition Topics

May

Local Landmark

Entry Deadline

Monday, May 1, 2017, 11:59 P.M.

June

Forgotten (places)

Entry Deadline

Monday, June 5, 2017, 11:59 P.M.

July

Travelogue

Entry Deadline

Monday, July 3, 2017, 11:59 P.M.

August

Henri Cartier-Bresson "eques"

Entry Deadline

Monday, August 7, 2017, 11:59 P.M.

September

A Shot in the Dark

Entry Deadline

Monday, September 4, 2017, 11:59 P.M.

March Field Trip

BY LYNNE LEWIS
FIELDTRIPS@LPS.CC

March 11

Cowboy Jimmy's Ranch

Location: Aurora

Western shoot on a ranch in Aurora. 3 models (2 cowboys and 1 Indian princess) and horses; The setting is on private ranch and hopefully we have snow. This will be an afternoon/early evening shoot with a campfire, use of barn and hopefully a nice sunset. Fee: \$45 per photographer with a minimum of 10 and max of 20.

Contact: Alissa Dasta Coletta

More Information/Website:

adcoletta@gmail.com



Interesting Website

BY JERRY NEFF
JANEFF40@COMCAST.NET

This Boost Your Photography issue may be useful for some of our members; especially this article How to Take Better Snow Photographs.

The link from How to take better snow photographs:

[http://www.boostyourphotography.com/2014/01/snow.html?utm_source=Boost+Your+Photography+Newsletter&utm_campaign=341fcfdc49-RSS WEEKLY EMAIL CAMPAIGN&utm_medium=email&utm_term=0_acb7faa4de-341fcfdc49-202397029](http://www.boostyourphotography.com/2014/01/snow.html?utm_source=Boost+Your+Photography+Newsletter&utm_campaign=341fcfdc49-RSS+WEEKLY+EMAIL+CAMPAIGN&utm_medium=email&utm_term=0_acb7faa4de-341fcfdc49-202397029)

InFocus

The e-Newsletter for the
Loveland Photographic Society

Newsletter Deadline

In order to publish the newsletter by the first of the month, please [email](#) your articles by the 28th of the previous month, maybe sooner if there are a bunch of pictures involved. Any plain text file, email body text, or a Microsoft Word compatible document will do, with pictures embedded or attached separately. Please don't convert pure text files to PDF format.

Field Trip Registration

To register for a field trip, logon to the website, go to the calendar and click on the event. Click on **Registration Information** (lower left-hand corner) to sign up.

Submitting Pictures for the Monthly Competition or Photo Review Session

- Log on to the LPS.CC website
- Mouse over the Competitions dropdown on the Home Page.
- Select menu item:
Submit images to a Competition
- Select the Competition or the Third Monday Photo Review
- Click the **Select** button on the Left side.
- At the bottom of the screen, click on **Upload images into the Competition.**
- Then click on the button **Select** which will open a window on your computer to select images.
- Click on **Save Images**
The monthly competitions allow a single image per competition.

The photo review session allows up to two images — title the images with the letters A and B followed by your last name. This will allow us to limit the number of images if necessary.

SIG Meetings

2nd Wednesday

NikonFX Group

Wednesday, March 8

LoCo Artisan Coffee House

[544 N. Cleveland Ave.](#)

Loveland, CO

6:30-8:30 PM

Mac Users Group

Thursday, March 16

Poole's Residence in Seven Lakes

Patio Homes and Cottages

[2915 Purgatory Creek Dr.](#)

Loveland, CO

6:30 PM

970-481-2175 for more information

The LPS Affiliate Program

The following companies have offered LPS various programs for the club and anyone who uses the special links provided on the website to make purchases. Make sure to use the links **each time you order**. Otherwise, you and LPS will not receive the benefits of the program each company offers.

- ◆ Amazon.com
- ◆ Adorama
- ◆ Think Tank Photo
- ◆ Feisol
- ◆ Topaz Labs
- ◆ Red River Paper

Click on **Affiliate Program** on the LPS.CC website home page.

Join the Club!

If you are reading the newsletter as a non-member and would like to join the Loveland Photographic Society, go to the main page on the LPS.CC website and click on **Membership > Join or Renew**.

When using PayPal and paying with a business account, please send an email to treasurer@lps.cc identifying the name of the payee.



Suggestion Box

Suggestions or comments concerning the club can be [submitted here](#), which in reality is an email to the editor. Your email will be forwarded to the appropriate board member. Thanks for your input!

CLASSIFIEDS

If you have any camera equipment you would like to sell, you can [list your item](#) in the newsletter. The listing will be a one time entry (one month).

Be sure to include your contact information, and check sources like B&H, Adorama, etc for realistic pricing.
