



## In Plain Sight Presentation by Evan Anderman

TIM KATHKA, PROGRAM COMMITTEE

Our October speaker is Evan Anderman, a Denver-based social landscape photographer who seeks to challenge the intricate relationship between human development and the natural world. His aerial and terrestrial photography endeavors to bring into focus the difficult-to-see widespread elements of the way our society uses the land. His work can be found in the collection of the Denver Art Museum and many private collections across the country and has been exhibited at institutions nationally and internationally. He received a BSE in geological engineering from Princeton University and an MSE and Ph.D. from Colorado School of Mines. He has served on numerous nonprofit boards and is currently the past president of the Board of CENTER, an organization that supports socially and environmentally engaged lens-based projects, in Santa Fe, New Mexico.

He states: "As a geologist, when I fly over the high plains of eastern Colorado, I look at the many, overlapping layers and how the land has been modified by a combination of processes, both natural and manmade. The lowest, the land itself, has been created over millions of years and forms the foundation. Draped on top of that, mankind has imposed itself in various ways with intrusive activities that are collectively called 'progress.' Aggressive cultivation and overuse of pesticides and fertilizer have resulted in degradation of the most valuable resource, the fertile soil."



### Club Meetings

Monthly club meetings are hybrid in-person plus Zoom; the Saturday Chat is in-person only; the Third Monday Review session is online only. *No pass code is needed for the online meetings*

#### **Saturday, October 12**

##### **Saturday Photo Chat**

Earle's Coffee Shop  
1423 North Denver Avenue, Loveland  
8:30–10:30 AM

#### **Monday, October 14**

##### **Monthly Club Meeting**

Trinity United Methodist Church  
801 Cleveland Avenue, Loveland  
Social time 6:00 PM  
Meeting 6:30–8:30 PM

[https://us06web.zoom.us/j/93226580276?](https://us06web.zoom.us/j/93226580276?pwd=eWxtbVYzTGpWbWlYY3lscGNwbWZRdz09)

[j/93226580276?pwd=eWxtbVYzTGpWbWlYY3lscGNwbWZRdz09](https://us06web.zoom.us/j/93226580276?pwd=eWxtbVYzTGpWbWlYY3lscGNwbWZRdz09)

#### **Monday, October 21**

##### **Third Monday Photo Review**

6:30–8:30 PM

[https://us06web.zoom.us/j/95087721084?](https://us06web.zoom.us/j/95087721084?pwd=eXlMndWenQyaCt6WUV6RmppenlWdz09)

[j/95087721084?pwd=eXlMndWenQyaCt6WUV6RmppenlWdz09](https://us06web.zoom.us/j/95087721084?pwd=eXlMndWenQyaCt6WUV6RmppenlWdz09)

#### **Tuesday, November 5**

##### **LPS Board Meeting**

Perkins Restaurant  
2222 W. Eisenhower, Loveland  
6:30 PM  
*Open to All*

## SERVICE

### Officer Elections in November 2024

Elections for the officers for the 2025 year will be held at the November meeting. A slate of candidates will be posted in the November newsletter, which is published on October 25. If there is only one candidate for an office, voting will be by voice vote; if more than one member is running for office, there will be a written ballot. Members joining online can send their vote privately to the secretary via the chat option.

Elections for any office are always open, and any member who wishes to run for an office is welcome to do so; just notify secretary Jerre Johnson to be added to the ballot. Candidates can also be nominated from the floor at the November meeting but must agree to serve, either in person at the meeting or by written agreement.

Other office holders listed as members of the LPS Board of Directors are volunteers who are appointed by the president to serve specific functions and also have a part in discussing and voting on club policies and activities.

### Program Committee Member Needed

Ruth Sprain will be stepping down from the Program Committee, after serving for three years. This three-member committee works together to find presenters for our club meetings or organize alternative hands-on activities. This is a non-elective position. The new member would join the team in January 2025. If you would like to know more about what is involved with this committee or are interested in volunteering, visit with Ruth or committee members Rich Krebs and Tim Kathka.

### Evan Anderman (continued)

"While my main interest is the subtle beauty of the landscape itself, I also like to tease out what man has done with that land, and make the viewer wonder what is going on and why.

Regarding forest fires, of which I have had recent examples nearby, forest fires are a fact of life in the Western United States, whether they are created by man or happen naturally. I have flown over a number of these areas for my photography shoots and am always fascinated by how extensive and persistent they are. They have a very different character on the ground, the open space feeling foreign and apocalyptic in what would normally be verdant forest. The micro-environment of the burn area is instantly changed, and it is surprising how long it takes for these areas to recover, practically sterilized from the intense heat of the fire. The lack of vegetation causes other problems with flooding and increased erosion. Houses, however, are generally rebuilt quickly, a reminder of the discongruity between man and nature. But plants do grow, in a different form at first, in a timeline that brings into question man's perceived superiority over nature."

Evan plans to be with us in person at our meeting on October 14 at 6:30 at Trinity United Methodist Church, 801 Cleveland Avenue, in Loveland.



*Photos © Evan Anderman*

### LPS Board of Directors

#### ELECTED OFFICERS

PRESIDENT

— ARDETH CARLSON

VICE PRESIDENT

— RICH KREBS

TREASURER/MEMBERSHIP

— JEN LAMMEY

SECRETARY

JERRE JOHNSON

#### CHAIRPERSONS

PROGRAMS

—TIM KATHKA

—RICH KREBS

— RUTH SPRAIN

COMPETITION

— ROB HUFFSMITH

WEBMASTER

— MIKE TESKA

PROJECTIONIST

— MALCOLM PATTEN

MENTOR

—MIKE WILCOX

PSA REPRESENTATIVE

—LISA SCHNELZER

SCHOLARSHIPS

— RUTH SPRAIN

NEWSLETTER

—ARDETH CARLSON

FIELD TRIPS

—JIM ROODE

PUBLICITY

—KEVIN FETTIG

FORUM DIRECTOR

—INGRID JACOBSON

GREETING HOST

—BILL LUNDQUIST

The LPS Board meetings are open to all members. If you are interested in seeing how your leadership team tends to club business, you are welcome to attend, although only Board members can vote. Information is on page 1 of the newsletter.

## December Meeting Plans

ARDETH CARLSON, PLANNING COMMITTEE

### Dinner or Dessert?

The planning committee is considering the possibility of having a catered main dish for the December 9 meeting, with a spouse or other guest also invited. Having an actual meal rather than a dessert potluck most likely would involve a small cost, approximately \$10 per person (the club will take care of the rest of the expense), and the requirement of pre-registration so that a number could be provided to the caterer.

One suggestion has been Nordy's, which can provide a choice of two meats that would be brought to our location. To keep costs low, both for the club and for the participants, we would also ask members to bring a side dish or dessert.

I recently sent an email to members to find out how many members plan to attend the December meeting. At this point, I have only heard from 6 people. It might seem like this is early to be asking for your commitments for December, but the dinner will be on our regular meeting night, so hopefully, it is already on your calendar.

Obviously, any business that provides food service requires advance reservations and usually a guaranteed number of guests, especially at the holiday season. If the planning committee cannot be assured of an adequate number of attendees, we will need to scrap the idea of having a dinner and revert to the dessert potluck that we have had for the past couple years.

If you are planning to attend the December meeting, please RSVP before October 25 with the number attending to [ardeth.carlson@gmail.com](mailto:ardeth.carlson@gmail.com). Also feel free to suggest other businesses that could provide a main dish at a reasonable cost delivered to our location.

### Photo Competition

The December photo competition is expected to be the "Best Of," as is our tradition. Members submit a photo in each category of Open, Nature, and Travel that they have previously submitted in one of the 2024 competitions. Photos that were submitted in one of the monthly topics or in Monochrome will enter those in the Open category. We hope to have an outside judge score the photos in advance and then provide comments and critiques during the December meeting.

### Member Print Exhibition

Again this year, members will have the opportunity to share their photos other than in a competition. Members can bring up to three printed photos for a special exhibition at our December meeting and are welcome to bring a tabletop easel or easels to display your photos or a standing easel for extra large prints; otherwise the photos will be displayed flat on the tables, as there is no way for us to hang them on the walls, and the inexpensive wood easels we tried to use last year generally collapsed.

Prints should be no smaller than 8x10, (although, of course, larger prints have more impact) and can be printed on paper, glass, canvas, etc. Matting and/or framing is optional. Include a small card with each photo, with your name and title of the work. There is something very satisfying about seeing your photos in print, and printing on various types of paper or canvas gives a different look from seeing your images only digitally.

### Raffle Fundraiser

There will also be a raffle as a club fundraiser. Tickets will be available for purchase which can then be used to "bid" on an available item or items. There will be a drawing to determine the winner of each item.

If you have any items or services to donate that you feel members would be interested in bidding on, you can bring them to the church on the meeting date or make arrangements to drop them

off a day or two in advance. In the past, members have donated such things as camera bags, tripods, books, reflectors or other photographic accessories, photo prints, a couple hours of photographing or post-processing mentoring, mugs, and other non-photographic items such as home décor.

We would appreciate some volunteers who can help with room setup ahead of the meeting and cleanup afterwards. If you have any questions or suggestions about our December meeting, contact me at [ardeth.carlson@gmail.com](mailto:ardeth.carlson@gmail.com).

## October Worldwide Photo Walk®

The Worldwide Photo Walk is an event sponsored by KelbyOne, an online organization that offers courses, seminars, and conferences for photographers. There is no fee to participate in the photo walk, and you do not need to subscribe to KelbyOne to join the walk. KelbyOne does encourage donations to The Springs of Hope Kenya orphanage, and you can donate on their website.

There is also a photo competition for everyone who registers, with prizes donated by industry-related sponsors. Only one photo can be submitted for the competition, and it must be taken during the photo walk, not before or after. More information on the photo walk, rules for the competition, and a link to donate to the orphanage can be found at <https://worldwidephotowalk.com/>.

This year the photo walk is on October 5. The Loveland walk will begin in the parking lot on the corner of 5th Street and Lincoln at 5:30 PM, and participants can meet at the Foundry Plaza for a social time after the walk ends at 7 PM. You can register for the Loveland walk here: <https://worldwidephotowalk.com/walk/loveland-downtown-photowalk/>

# Competition Corner

## Submitting Pictures for Competition or the Photo Review Session

- Log on to the LPS website
- Mouse over the **Competitions** dropdown on the Home Page.
- Select **Submit images to a Competition**
- Select the Competition category or the Third Monday Photo Review
- At the bottom of the screen, click on **Upload images into the Competition.**
- Then click on the button **Select** which will open a window on your computer to select an image.
- Click on **Save Images and Proceed to Edit Page.**
- Type in a title and click on **Save any changes and return to original page.**
- You can replace any photo, up to the submission deadline, if desired.

The monthly competitions allow a single image per category. The photo review session allows up to three images.

## November Competition Topic

The remaining topic for the year is Still Capture

## New Members

We are happy to welcome new member James Camp.

## October Competition

### Competition Categories

Open Projected (included every month)  
Monochrome (rotating category)  
Monthly Topic: Autumn Splendor

### Submission Deadline

Before Midnight, Monday, October 7

### Please keep the judging criteria in mind:

**Impact and Viewer Interest**—"Wow" factor is the nebulous quality where an image "pops." This subjective aspect of judging should not preempt the technical or composition aspects of an image.

**Composition**—Good composition is a pleasing arrangement of the elements in an image. There are many guidelines for good composition that judges may consider.

**Technical Quality**—This includes sharpness, focus, color, tonal scale, contrast, appropriate depth of field and other qualities. Consideration is also given for the effect the photographer was trying to achieve such as high key, multiple exposure, or selective focus.

**Monthly Topics**—The subject matter should be related in some manner to the topic. While there are no formal deductions or penalties, judges may reduce their overall score if they feel the image does not align with the monthly topic. With that said, creative interpretation is encouraged, except in categories with specific rules such as monochrome.

**Open Projected**—The image must begin as a photograph. From there, it is up to you. Any photograph may be entered in the Open Projected category.

## Monochrome Photography

The definition from the Photographic Society of America consists of the following:

*An image is considered to be Monochrome only if it gives the impression of having no color (i.e. contains only shades of grey which can include pure black and pure white) OR it gives the impression of being a greyscale image that has been toned in one color across the entire image. (For example, by sepia, red, gold, etc.) A greyscale or multi-colored image modified or giving the impression of having been modified by partial toning, multi-toning or by the inclusion of spot coloring does not meet the definition of monochrome and shall be classified as a Color Work.*

For more information, check out this website:

<https://iso.500px.com/how-to-use-a-monochrome-color-palette-to-elevate-your-photography>.

## October LPS Competition Groups

Participation in a group is determined by the average of the member's 9 previous LPS competition scores. The groups for the October competition:

Group 5—Max Coopwood, Malcolm Patten, J.R. Schnelzer, Lisa Schnelzer, Jeff Stephenson

Group 4—Gerald Baumann, Ardeth Carlson, Kevin Fettig, Tim Hitchcock, Robert Huffsmith, Tim Kathka, Ed Ogle, Alan Schuppan, Ruth Sprain, Guy Wagner

Group 3—Kevin Clarke, Kurt Flock, Jerre Johnson, Bob McDonnell, Octavio Noda, Dan O'Donnell, Laurie Paulik, Josemaria Quera, Mike Teska, Dave Van Riper

Group 2—Jenny Anderson, Jim Roode, Wayne Snodderly

All other members will compete in Group 1 until the member has 9 submitted images that reach an averaged score for a different group. An individual member's competition group might vary during the year.

### Group Range of 9-Score Averages

Group 5 > 22.3

Group 4 <= 22.3

Group 3 <= 21.3

Group 2 <= 20.0

## LPS September Best of Show

All competition photos and scores can be viewed on the LPS website under Competition Results. Check the box "Display All."



BOS Travel, Group 5  
J.R. Schnelzer



BOS Travel, Group 4  
Lisa Schnelzer



BOS Topic, Group 5  
Malcolm Patten



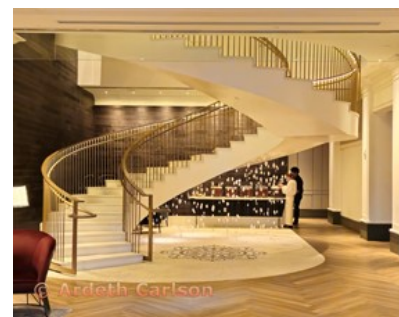
BOS Topic, Group 4  
Gerald Baumann



BOS Travel, Group 3  
Dan O'Donnell



BOS Travel, Group 2  
Wayne Snodderly



BOS Topic, Group 3  
Ardeth Carlson



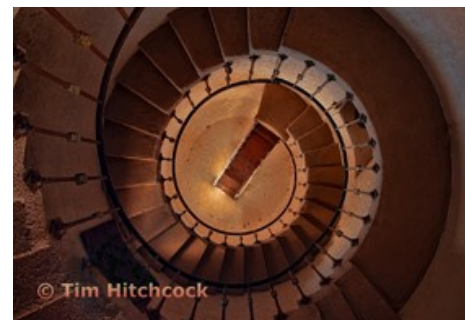
BOS Topic, Group 2  
Wayne Snodderly



BOS Open, Group 5  
Malcolm Patten



BOS Open, Group 4  
Lisa Schnelzer



BOS Open, Group 3  
Tim Hitchcock



BOS Open, Group 2  
Wayne Snodderly

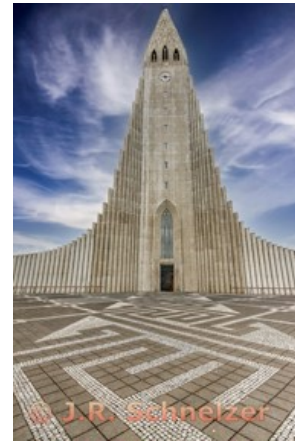
## LPS September Award of Merit



AOM Travel, Group 5  
Malcolm Patten



AOM Travel, Group 4  
Tim Kathka



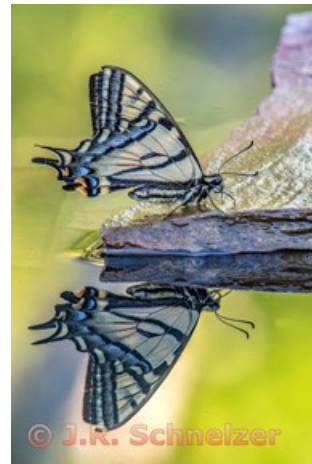
AOM Topic, Group 5  
J.R. Schnelzer



AOM Topic, Group 4  
Robert Huffsmith



AOM Travel, Group 3  
Ardeth Carlson



AOM Open, Group 5  
J.R. Schnelzer



AOM Topic, Group 2  
Wayne Snodderly



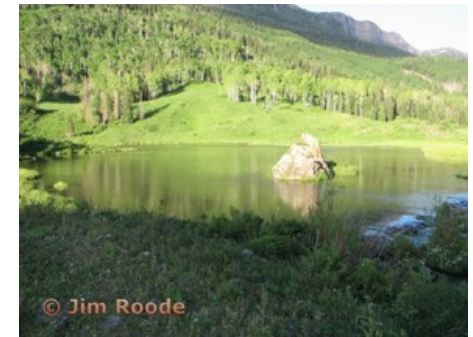
AOM Topic, Group 3  
Laurie Paulik



AOM Open, Group 4  
Robert Huffsmith



AOM Open, Group 3  
Dan O'Donnell



AOM Open, Group 2  
Jim Roode

## PSA Interclub Competitions

LPS is a member club of the Photographic Society of America and participates in four divisions of interclub competition: Nature, Photojournalism, Print, and Travel. There are three rounds of competition per season, with deadlines on November 15, February 15, and April 15.

LPS members who are interested in having their photos considered for our club's submissions to a PSA interclub competition can contact the LPS rep for more details.

### NATURE DIVISION:

**Dan O'Donnell, LPS Rep**  
[djod@me.com](mailto:djod@me.com)

Nature Division (ND) image guidelines can be found at <https://psa-photo.org/page/nature>. Dan is looking for images that illustrate an interesting behavior or a unique point of view, not just a landscape or wildlife that is in good focus! Storytelling is an important part of the image. Maximum image size is 1920x1080 pixels.

### PHOTOJOURNALISM DIVISION:

**Ardeth Carlson, LPS Rep**  
[ardeth.carlson@gmail.com](mailto:ardeth.carlson@gmail.com)

Information about the Photojournalism Division (PJD) and guidelines for photojournalism images can be found at <https://psa-photo.org/page/photojournalism>. Ardeth is looking for photos that contain informative content and emotional impact, reflecting the human presence in our world. The image should contain a strong visual story. Maximum image size is 1920x1080 pixels.

### PICTORIAL PRINT DIVISION:

**Lisa Schnelzer, LPS Rep**  
[western-exposure@hotmail.com](mailto:western-exposure@hotmail.com)

The five image categories in the Pictorial Print Division (PPD) are: Small Color, Large Color, Small Monochrome, Large Monochrome, and Creative Altered Reality. For further information regarding submissions, contact Lisa.

### TRAVEL DIVISION:

**Rich Krebs, LPS Rep**  
[rkrebs318@gmail.com](mailto:rkrebs318@gmail.com)

A definition of a travel photo and a PDF of the Travel Division (PTD) guidelines can be found at <https://psa-photo.org/page/photo-travel>. Rich would like images that show characteristic features of a place or a people. Image size should be a maximum of 1920x1080 pixels.

## LPS Photos Needed for PSA Interclub Competition

The interclub reps for the four divisions in which LPS participates are now looking for photos from our members for Round 1 of the PSA interclub competition. In the Nature, Photojournalism, and Travel Divisions, the club can enter 6 images, which must be from 6 different members.

In the Print Division, Lisa can submit 4 images from 4 different members in each of the 5 categories, and she can submit a photo from the same member in more than one category. Prints that win an award in any of the three rounds are displayed in the print gallery at the annual PSA Photo Festival.

If you have images you feel might do well in PSA competition, contact an LPS rep.

## Join the 365-Day Challenge

If you need some inspiration and motivation to get out your camera and start shooting, consider joining the 365-day challenge for PSA members. Some participants take photographs specifically for each daily topic; others pull from their archives for an image that fits the topic. You can jump in at any time, and there is no requirement to submit for every topic. Sign up once for the challenge and then just submit your photos, up to 7 at a time. Even though there is not an option to like or comment on photos, it is fun to see how other photographers interpret the topics, often very creatively.

## InFocus Receives PSA Award

For the second year in a row, LPS InFocus was entered in the PSA newsletter competition. Richard James, the competition chair, reported that 37 entries were received, of which 25 were magazines and 12 were newsletters.

LPS InFocus placed first in the newsletter-style category, which is described as "shorter documents, generally less than 10 pages, with primarily information about club operations and with up to two shorter articles." In addition, InFocus was awarded the Arthur P. Henrick's Memorial Award, new this year, given to the first-place entry in each of the magazine and newsletter categories.

A panel of three judges reviewed the entries, and awards were determined based on criteria in three areas: presentation, production, and content. InFocus was given a score of 284 out of a possible 300.

## PSA Individual Competitions

Members of PSA have many opportunities to submit photos for individual competitions. Like the interclub competitions, most of the PSA divisions have several rounds per season. These competitions include:

**Pictorial Image**—Portrait; Landscape; Still Life, Architecture

**Photojournalism**—Photo Story; Short Story; Quarterly

**Pictorial Print**—Green Eagle; Print of the Month; Photo Book Essay

**Photo Travel**—Photo Travel Essay; Photo Travel Mini Essay

### 3D Division

Winning photographs in the individual competitions might be published in the PSA Journal in the news from each division.

For complete information:

<https://psa-photo.org/page/competitions>

## Report on PSA Photo Festival 2024

ARDETH CARLSON

Our own LPS club member J.R. Schnelzer, as President of PSA, welcomed festival participants and presided over the Board of Directors meeting as well as the Saturday night honors banquet at the 2024 PSA Photo Festival in Tucson, Arizona.

The presenters and speakers were outstanding. LPS member Bill Lundquist commented that he found they were not only topnotch but very approachable. He was particularly impressed with Seth Resnick ("Unleashing Creativity"), Mitch Dobrowner ("Still Earth"), and Vincent Versace ("A Brief Discussion of Timelessness"). I really enjoyed the macro presentation by Darrel Gulin and the nature presentation by David Akoubian. I agree with Bill that Vincent Versace was quite an entertaining showman as well as amazing photographer!

I always love looking at all the images in the Print Gallery. In addition to the winning photos by LPS members Omar Pena, J.R. Schnelzer, Jeff Stephenson, Jerry Baumann, and Lisa Schnelzer which were on display in the gallery, many of our own LPS Youth Showcase winners received recognition in the gallery and also in the printed PSA Youth Showcase 2024 brochure.

I went on the group tour of the Mission San Xavier del Bac, and Bill also visited it on his own, which offered opportunities for many photo shots. The resort also intentionally maintained the original ecology of the area, with many walking trails on the property, and it was an excellent location for landscapes and for birding, including a greater roadrunner that was hanging out at the swimming pool one morning!

The annual festival is a wonderful time to be inspired and to build on your photography experience and knowledge, and I encourage you to consider attending the 2025 conference in Portland Oregon.



J.R. & Lisa Schnelzer



Photos  
© Ardeth Carlson



## Reasons to Join PSA

An individual membership in the Photographic Society of America is an excellent bargain for photographers seeking to improve their photography skills. PSA offers free online photography courses, study groups, mentorships, and the opportunity to compete individually in the PSA divisions of Nature, Travel, Pictorial Print, Projected Image, Photojournalism, and 3D. Educational webinars on a variety of subjects can be viewed at any time.

Online image dialogue groups on various topics are open to all PSA members, in which members of groups of 6-7 submit a photo once a month, and other members offer comments, critiques, and suggested edits.

In addition, the monthly PSA Journal is available online for download. This is a beautiful publication with a lot of information about photography locations and ideas for different photo genres plus discussion on relevant topics about photography.

The annual PSA Photo Festival is a great way to meet photographers from all over the U.S. in addition to members from other countries. The program presenters are topnotch, and the tours provide fun field-trip experiences.

Members of PSA who live in Colorado can also join the Colorado chapter of PSA. This chapter meets several times during the year, featuring a speaker, and group photo tours may be offered in the future. For more information, contact Deborah Milburn at [ddmilburn3@gmail.com](mailto:ddmilburn3@gmail.com).



## Saturday Photo Chat

The Saturday Photo Chat, formerly known as the "Bull Session," is an informal get-together of photographers to talk about places to photograph, gear, photo software, and almost anything about photography. This has been an ongoing activity for many years, headed by long-time LPS member Bill Standerfer. The meetings are on the second Saturday of the month at 8:30 AM, now meeting at Earle's Coffee Shop, 1423 North Denver Avenue in Loveland. If you have any questions, contact Bill at [billstanderfer@outlook.com](mailto:billstanderfer@outlook.com).

## Third Monday Photo Review

An excellent way to get feedback on your photos and for experienced photographers to share their knowledge is to participate in the Monday photo review sessions via Zoom on the third Monday of each month. Participants are allowed to submit three photos no later than noon of the session day. The review is mentored by Mike Wilcox, who welcomes and encourages comments and suggestions by all participants. Many members have reported that they have received a greater knowledge of photo techniques and also found it helpful to see their photos in the eyes of other photographers. Because judges of the monthly competition most often do not have time to offer critiques on all of the competition photos, the Third Monday Review provides that helpful aspect of improving our craft. Click on the link on page 1 of the newsletter to join the Zoom meeting.

## Newsletter Index

To find articles in previous issues of the LPS InFocus newsletter, go to the Newsletter Index on the website. The titles of the articles are displayed in alphabetical order. To find a specific article, the index shows the year and month of the issue of the newsletter and page number on which the article appears. In order to look at the article, you then need to go back to Newsletters and select the issue you want.

## Submitting Third Monday Review Photos Into Competition

Several members have noted that they are having difficulty with entering a photo in a monthly competition that has previously been submitted to the Third Monday Review. To do that, the competition image must be selected from your Image Library on the LPS website, not uploaded again from your computer. If you have made changes to your Third Monday photo and want to enter that in the competition, which is allowable, you need to delete the first image from your Image Library before submitting the updated photo in the competition.

A photo that has been entered in an LPS monthly competition cannot be entered again during that year (even if you want to submit it to a different category or changed it a little), and if the photo has received a BOS or AOM award in monthly competition, it can then no longer be entered in any LPS competition except the December "Best Of" for that year.

## LPS Website Discussion Forums

Log in to [www.lps.cc](http://www.lps.cc) as a member

🔑 Click on *Discussion Forums*

🔑 You can select any of the headings, such as *Upcoming Photo Opportunities & Events* or *Meet & Shoot*

🔑 Click on *View Topics* to see the posts.

If you would like to receive notifications with the latest posts for that topic, click on the Subscribe button.

The board decided to auto subscribe all members to the Field Trips heading, but if you do not want to receive notifications of those posts, click on Edit Subscription and choose your desired option.

## LPS InFocus The e-Newsletter for the Loveland Photographic Society

### Mailing Address

P. O. Box 7604 • Loveland, CO 80537

### Public Facebook Page

[https://www.facebook.com/  
LovelandPhotographicSociety/](https://www.facebook.com/LovelandPhotographicSociety/)

### Members Only Facebook Group

[https://www.facebook.com/  
groups/237033251716/](https://www.facebook.com/groups/237033251716/)

## LPS Speaker Recordings

Most meeting presentations have been recorded for viewing by members only. You can find links to the videos on the LPS website; go to **Membership>Resource Links>Videos**. Please *do not share* these links with non-members unless they are marked as shareable in the list.



Our Facebook group **Members of Loveland Photographic Society** provides information on club meetings and events and is a place to share your photos and initiate conversation about photography topics that interest you. You must be a current member to join the group.

## JOIN THE CLUB

If you are reading this newsletter as a non-member and would like to join the Loveland Photographic Society, go to the main page on the [www.lps.cc](http://www.lps.cc) website and click on **Membership > Join or Renew**. Annual dues are \$45. Membership dues may be paid by credit card online, mailed to the P.O. box address on page 9, or in cash or a check made out to Loveland Photographic Society and given to the LPS treasurer.